

report to Board of Trustees

2023-2024 School Enrolment Report

Date	December 12, 2023
Meeting Type	Regular Meeting, Public Agenda
To	Board of Trustees
From	Gary Strother Chief Superintendent of Schools
Purpose	Information
Originator	Dany Breton, Superintendent, Facilities & Environmental Services
Governance Policy Reference	Operational Expectations: OE-7: Communication with and Support for the Board OE-9: Facilities
Resource Person(s)	Catherine Ford, Director, Planning Jeff Quigley, Manager, Planning Sherri Lambourne, Manager, Real Estate and Leasing Brenda Gibson, Manager, Transportation Services Heather Kirkwood, Manager, Business Administration, School Improvement Shay Khan, Manager Revenue and Treasury Tanya Scanga, Director Corporate Financial Services Sandra Pearse, Admissions Coordinator, CBE Welcome Centre

1 | Recommendation

- This report is being provided for information to the Board of Trustees. No decision is required at this time.

2 | Issue

Each year in late November or early December, a School Enrolment Report is presented to the Board of Trustees for information.



3 | Background

The purpose of the report is to provide a snapshot of the end September 2023 enrolment data for all CBE schools and programs. The CBE uses this information to prepare key documents such as the annual Three-Year School Capital Plan, which provides an updated analysis of projected enrolment growth and population trends.

For many years, the CBE relied on the City of Calgary's annual Civic Census data as the main source for population and demographic information to provide context for this report. The City of Calgary's census program was discontinued in 2019. *The Calgary and Region Economic Outlook 2023-2028 Fall 2023* update document is now the only city data that informs this report.

Several attachments are included as part of the School Enrolment Report, which provide the following information:

- The number of students enrolled in each school, by grade and program, including alternative programs, classes for students with complex learning needs, and the number of out-of-attendance area students as of end September 2023; and
- The provincial capacity of schools, including the associated number of modular classrooms, and utilization rate of each school building; and
- A list of the leases and the amount of space leased for each building.

It is important to note that the School Enrolment Report does not provide financial data or information on class size within schools. School budgets are adjusted during the school year to allocate resources based on, equity considerations, complexity, and other additional factors that are unique to each school.

4 | Analysis

City of Calgary's Population

The City of Calgary estimates that Calgary's population was 1,389,200 as of April 1, 2023. This represents an increase of approximately 40,600 people, or 3.0 per cent, from the year before. This is the most significant expansion since 2014 and is due to relative housing affordability, a recovering labour market, and the federal government's immigration program that has stimulated net migration of both permanent residents and non-permanent residents, including newcomers from Ukraine, temporary foreign workers, and international students.

Population growth due to net migration was 81.5 per cent of the total increase, at 33,100 people. Natural increase, due to the difference between births and deaths, added an additional 7,500 to the Calgary population.

More information on the City of Calgary’s outlook is available on the City of Calgary website [The Calgary and Region Economic Outlook 2023-2028: Fall 2023 update](#).

Enrolment Trends-Calgary Board of Education

Graph 1 shows annual year-over-year changes in student enrolment. For 10 consecutive years (2009-2019), enrolment grew each year. A distinctive dip occurred during the 2019-20 school year, when enrolment dropped by 3,168 students, or 2.5 per cent. However, a sharp increase was realized between 2020 and 2023. Between end-September 2022 and end-September 2023, enrolment increased by 7,029 students, or 5.4 per cent. This increase is the largest realized in the last 40 years.

Graph 1: CBE Annual Enrolment Change (1981-2023)

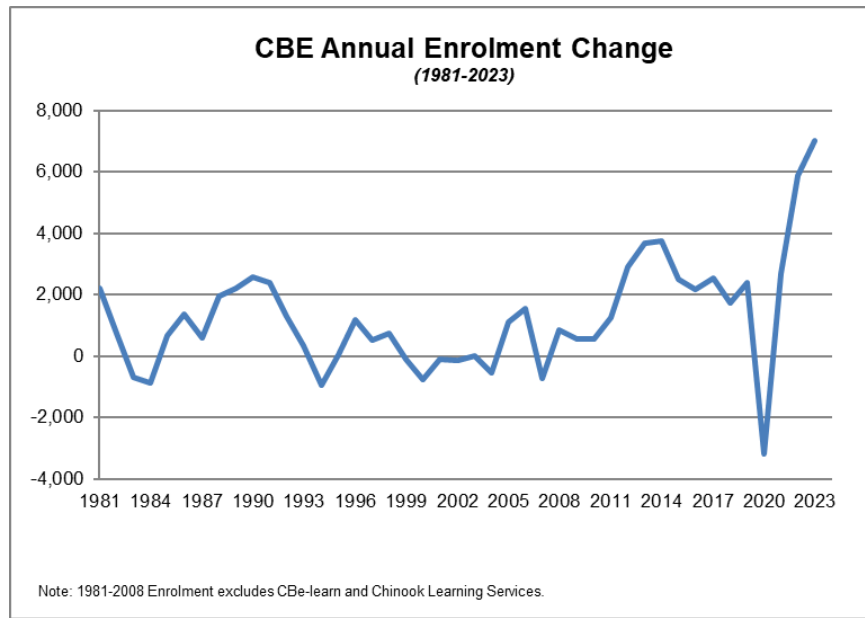


Table 1 below compares student enrolment counts between end-September 2022 and end-September 2023.

- Enrolment increases occurred in each division except pre-kindergarten and kindergarten. The CBE only has one Early Development Centre (EDC) location that offers pre-kindergarten programming to 37 students this year.
- As of end-September 2023, 16 schools offered a full day kindergarten program, reporting a total enrolment of 594 full day kindergarten students.
- Between end-September 2022 and end-September 2023, 18,257 K-12 students left the CBE, and 25,286 new students joined. A net gain of 7,029 students this school year is the result of student transfers and new registrations.

Table 1: Comparison of CBE Student Enrolment Counts between end-September 2022 and end-September 2023, by division.

	End-September 2022	End-September 2023	Difference
Pre-Kindergarten	71	37	-34
Kindergarten	9,051	8,972	-79
Grades 1-3	29,757	31,554	1,797
Grades 4-6	28,855	30,577	1,722
Grades 7-9	28,860	29,849	989
Grades 10-12	32,152	34,591	2,439
Sub-Total (Pre-K to GR12)	128,746	135,580	6,834
Self Contained Special Ed.	2,469	2,664	195
Total	131,215	138,244	7,029

Record enrolment growth is putting pressure on our system. This has caused the number of schools in overflow status to rise. As of end-September 2023, 25 schools had an overflow plan in place. This represents 10.0 per cent of all CBE schools. By comparison, at the end of the 2022-23 school year, 21 schools had an overflow plan in place, while only 12 schools had an overflow plan in place at the end of the 2021-22 school year.

Non-Canadian Student Admissions through the CBE Welcome Centre

Students who are “Non-Canadian”, as defined in AR6090, must register for admission to CBE schools through the CBE Welcome Centre. Students admitted through the CBE Welcome Centre include permanent residents, refugee claimants, children of lawfully admitted temporary residents, children with parents/guardians on work or study permits, and children with parents/guardians who are permanent residents or Canadian citizens although their child is not.

The CBE Welcome Centre tracks student registrations from July 1 to June 30 of each year. Graph 2 shows the number of Non-Canadian Students that registered through the CBE Welcome Centre since July 1, 2018.

In the years, 2019 and 2020, the number of students registered through the CBE Welcome Centre declined by 785 students (18%) and another 1,766 students (49%), respectively from previous year. This decline is likely attributable to global lockdowns and restricted travel that resulted from the COVID-19 pandemic.

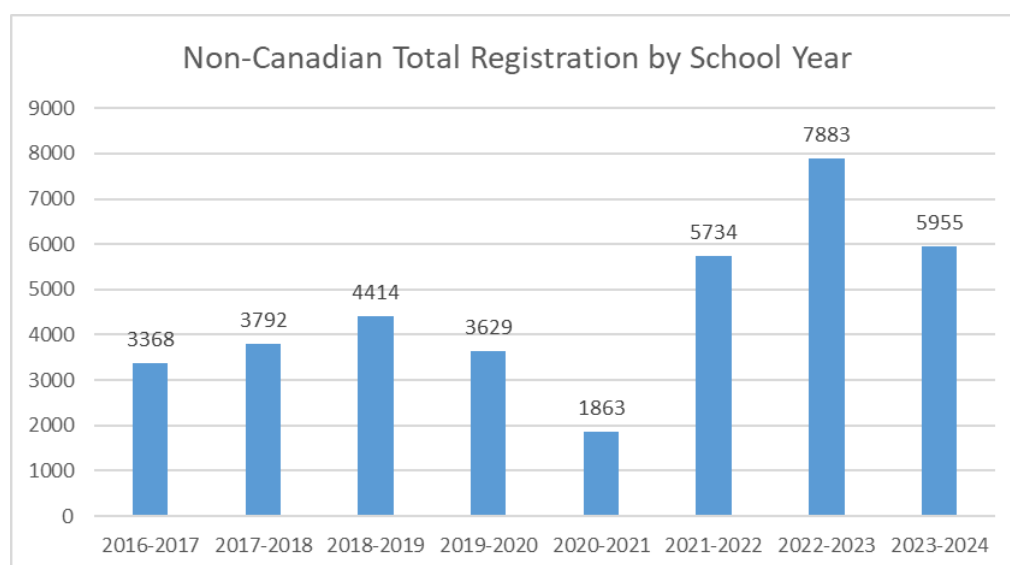
Conversely, from July 1, 2021 to June 30, 2022, there were more than three times as many registrations through the CBE Welcome Centre than during the previous year. 5,734 students registered for CBE schools through the CBE Welcome Centre between July 1, 2021 to June 30, 2022. Between July 1, 2022 and June 30, 2023 7,882 students registered through the Welcome Centre. This is a 37% (2,149)

increase in registrations from the year prior. This represents the highest annual non-Canadian student admission at CBE schools in the last decade.

It is important to note that the uptick in non-Canadian student admissions has continued throughout the summer and autumn of 2023. For the 2023-2024 school year, the Welcome Centre Admissions has processed 5,955 registrations up to October 25, 2023. CBE is on track this year to surpass the number of student registrations through the Welcome Centre that were seen in 2022-2023.

It follows that student admissions through the CBE Welcome Centre are the primary contributor to the net increase in student enrolments for the 2023-24 school year. The resumption of global travel upon the lifting of pandemic restrictions, coupled with government pledges to increase immigration and offer growing support to refugees in the years to come, suggest that non-Canadian student registrations will continue to influence student enrolment counts in future years.

Graph 2: Non-Canadian Student Admissions



Note: Non-Canadian Total Registrations for 2023-2024 as of October 25, 2023

The map in Attachment I shows where students who had enrolled for CBE schools through the CBE Welcome Centre resided at the time of registration.

School Enrolment (2023-2024)

Attachment II lists enrolment by CBE Administrative Area for each school by grade. It also reports the number of out-of-attendance area students in each school. Out of Attendance Area would include those students who are outside of CBE boundaries or are not attending their designated school. There are several CBE schools in communities where enrolment from the designated communities may be low or declining and the out of attendance area students make up a relatively large proportion of the student population. Accepting out of attendance area students each year allows these schools to maintain strong programming for students. Additionally, the out-of-attendance transfer process can also allow students to

access programs that may not exist within their designated school. This is typically most prevalent at the high school level.

A graph of total student enrolment over the last decade is included in Attachment III. As of end-September 2023, 111,259 CBE students were enrolled in the regular program (including Home Education, Outreach, Unique Settings, Chinook Learning and CBe-learn), which represents an increase of 6,318 regular program students, or 6.0 per cent, from the 2022-23 school year.

Attachment IV is a map of student population change by community. It conveys the changes that occurred in pre-k to Grade 12 enrolment, by community, from end-September 2022 to end-September 2023. Consistent with the large increases in student population growth across the system, the largest increase occurred in the northeast, north, and southeast sectors, and the downtown area. The map also indicates the location of the school that is approved for construction and is projected to open in the coming years.

Alternative Programs

Enrolment in alternative programs by school is reported in Attachment V. As of end-September 2023, 26,803 CBE students were enrolled in alternative programs, which represents an increase of 529 students, or 2.0 per cent, from the 2022-23 school year.

Complex Learning Needs

Enrolment counts for the regular program include students with complex learning needs. Some schools have classes for students with complex learning needs that do not offer a regular program but do offer an alternative program. In these situations, enrolment for students with complex learning needs is reported separately. Schools that offer classes for students with complex learning needs can have grade configurations that differ from the school's regular or alternative program(s). For example, a school that accommodates kindergarten to Grade 4 students for the regular program may simultaneously offer Grade 5 complex learning classes.

A detailed list of classes and enrolment for students with complex learning needs is reported in Attachments VI and VII. As of end-September 2023, 3,127 CBE students were enrolled in specialized classes (excluding Unique Settings), which represents an increase of 79 students, or 2.6 per cent, from the 2022-23 school year.

A list of definitions and acronyms of classes for students with complex learning needs is included in Attachment VIII.

Capacity and Utilization

Attachment IX provides provincial capacity and utilization rates for schools. The method for calculating Provincial Capacity is based on the on the "instructional" area determined for a school.

The following instructional spaces, if applicable for a particular school, are exempted and deducted from the total capacity of a school:

- areas leased to the public sector and non-profit groups, with the lease rate being at cost or for a nominal fee (e.g. not for profit daycare);
- areas leased by private schools; and
- areas leased by charter schools; and
- decentralized administration space in schools.

Area exemptions are not granted for space leased to the private sector for non-private school use.

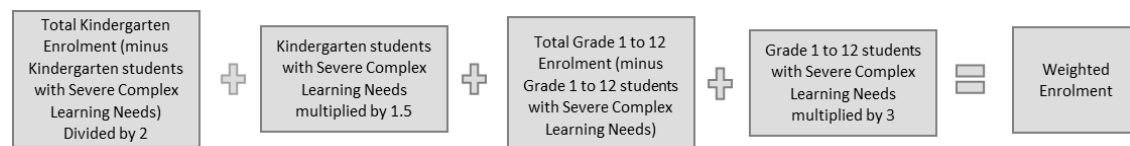
Lease exemptions are a parameter in the formula used to calculate capacity and as such, a school's capacity has the potential to change from year to year. The execution of a new lease for space, changes to an existing lease arrangement, or the discontinuation of a leased space at a school can alter a school's capacity value.

The calculation of utilization is based on a Provincial formula that “weights” students in the following categories:

- Kindergarten students who typically attend school on a half day basis (Early Development Centre and full-day kindergarten students are not weighted)
- K-12 students who have severe complex learning needs.

Students with a severe complex learning code may attend either a regular program or a specialized complex learning class.

The graphic below gives the calculation for weighted enrolment based on September 29 student enrolment each year:



Once weighted enrolment is determined, utilization is calculated by dividing the weighted enrolment by the Provincial capacity.

Between end-September 2022 and end-September 2023, the utilization rate of the CBE increased by 5 per cent. As of end-September 2023, the utilization rate of the system is 92 per cent. This is an increase from the 87 per cent in end-September 2022.

Table 2 shows the number of schools over, at, and under 85 per cent utilization per end-September 2022 enrolment data and end-September 2023 enrolment data.

Table 2: Comparison of number of schools over, at and under 85% utilization

Comparison of # of Schools Over, At and Under 85% Utilization

	2022	2023	Change
Over 85%	118	154	36
At 85%	0	1	1
Under 85%	119	83	-36

Leases

Leases of space by Area and leasing of surplus school facilities are reported in Attachments X and XI.

5 | Financial Implications

The Alberta Government uses a Weighted Moving Average (WMA) model to determine the funding school jurisdictions receive each year. The WMA is intended to provide a predictable amount of funding based on the budgeted school year. Table 3 shows how the three-year WMA enrolment is calculated.

Table 3: Three-year WMA enrolment

School year	Weighted Factor	Enrolment Count FTE
2021-2022	20%	Actual
2022-2023	30%	Estimate
2023-2024	50%	Projection

Source: Funding Manual for School Authorities 2023/2024 School Year

Table 4: Funding Full-time Enrolment (FTE) over three years.

Student Count	2021-2022	2022-2023	2023-2024
Actual Funded FTE	119,462	125,512	131,892*

**subject to review and confirmation by Alberta Education*

This means that although there are approximately 131,900 funded students within the CBE for the 2023-24 school year, funding for the current school year is based on the WMA of approximately 128,000 (*both figures are subject to review and confirmation by Alberta Education*). For growing school jurisdictions such as the CBE, this means that the WMA approach attracts less grant revenue than actual funded-student enrolment in the school year and provides for stable and predictable funding.

When determining the funding for the 2024-25 school year, the province will take the projected enrolment count used in the calculation of WMA for the 2023-24 school year and compare it against the actual September count date enrolments to determine the WMA Funding Adjustment. The WMA Funding Adjustment will be applied in 2024-25 school year.

6 | Conclusion

Student enrolment for the 2023-24 school year has increased by a total of 7,029 students between end-September 2022 and end-September 2023. This represents an unprecedented increase in year-over-year enrolment of 5.4 per cent.

The significant enrolment increase is likely attributable to the increase of interprovincial migration and non-Canadian student registrations through the CBE Welcome Centre.

GARY STROTHER
ACTING CHIEF SUPERINTENDENT OF SCHOOLS

ATTACHMENTS

Attachment I:	2023-2024 Student Registrations through the CBE Welcome Centre
Attachment II:	End-September 2023 enrolment including out of attendance area
Attachment III:	CBE actual enrolment 2013-2023
Attachment IV:	2023-2024 Student population change by community
Attachment V:	Alternative program enrolment by school and grade
Attachment VI:	Specialized classes 2023-2024
Attachment VII:	Enrolment in classes for students with complex learning needs 2023-2024
Attachment VIII:	Specialized classes definitions
Attachment IX:	School capacity and utilization 2023-2024
Attachment X:	2023-2024 Leased space in operating schools
Attachment XI:	2023-2024 Lease of surplus school facilities

GLOSSARY – Developed by the Board of Trustees

Board: Board of Trustees

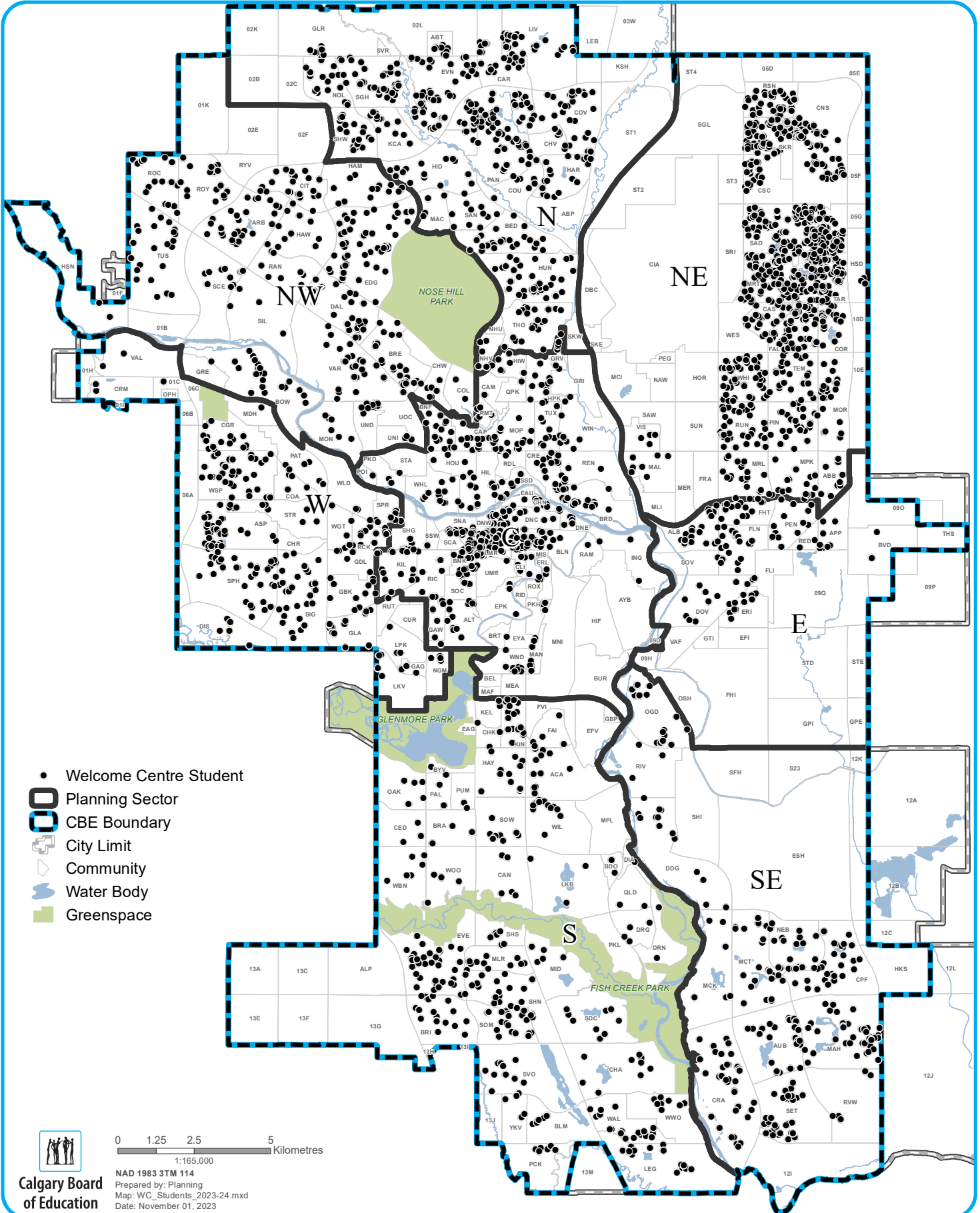
Governance Culture: The Board defined its own work and how it will be carried out. These policies clearly state the expectations the Board has for individual and collective behaviour.

Board/Chief Superintendent Relationship: The Board defined in policy how authority is delegated to its only point of connection – the Chief Superintendent – and how the Chief Superintendent's performance will be evaluated.

Operational Expectations: These policies define both the nonnegotiable expectations and the clear boundaries within which the Chief Superintendent and staff must operate. They articulate the actions and decisions the Board would find either absolutely necessary or totally unacceptable.

Results: These are our statements of outcomes for each student in our district. The Results policies become the Chief Superintendent's and the organization's performance targets and form the basis for judging organization and Chief Superintendent performance.

Welcome Centre Student Population September 29, 2023



CALGARY BOARD OF EDUCATION
End-September 2023

Schools highlighted in grey offer full-day kindergarten program.

SCSE = Self Contained Special Ed and represents system classes at the school level such as ACCESS, ALP, CSSI, etc

SCHOOL	Total	Pre-K*	K	GR1	GR2	GR3	GR4	GR5	GR6	GR7	GR8	GR9	GR10	GR11	GR12	SCSE	OOA
Arbour Lake School	742	-	-	-	-	-	-	-	141	202	192	161	-	-	-	46	40
Belvedere Parkway School	467	-	67	57	69	67	71	60	67	-	-	-	-	-	-	9	7
Bowcroft School	221	-	30	31	40	27	29	33	31	-	-	-	-	-	-	-	21
Bowcroft School	134	-	17	31	23	16	23	12	12	-	-	-	-	-	-	-	-
Bowness High School	1,382	-	-	-	-	-	-	-	-	-	-	-	527	455	388	12	198
Brentwood School	780	-	125	124	121	106	101	98	105	-	-	-	-	-	-	-	21
Captain John Palliser School	289	-	22	29	36	27	33	58	67	-	-	-	-	-	-	17	18
Captain John Palliser School	302	-	56	50	65	45	35	36	15	-	-	-	-	-	-	-	1
Citadel Park School	485	-	54	78	95	69	92	97	-	-	-	-	-	-	-	-	6
Dr. E. W. Coffin School	160	-	17	23	14	23	25	32	26	-	-	-	-	-	-	-	66
Edgemont School	632	-	52	105	111	97	131	136	-	-	-	-	-	-	-	-	4
Eric Harvie School	350	-	58	76	81	63	72	-	-	-	-	-	-	-	-	-	24
F. E. Osborne School	494	-	-	-	-	-	-	-	-	139	173	182	-	-	-	-	18
F. E. Osborne School	181	-	-	-	-	-	-	-	46	39	51	45	-	-	-	-	17
H. D. Cartwright School	479	-	-	-	-	-	-	-	-	135	151	161	-	-	-	32	28
The Hamptons School	177	-	19	34	42	38	44	-	-	-	-	-	-	-	-	-	8
Hawkwood School	706	-	84	94	113	102	106	89	118	-	-	-	-	-	-	-	13
Marion Carson School	288	-	28	29	54	33	38	52	54	-	-	-	-	-	-	-	19
Marion Carson School	230	-	50	47	51	49	33	-	-	-	-	-	-	-	-	-	1
Ranchlands School	356	-	34	46	49	48	48	58	57	-	-	-	-	-	-	16	3
Robert Thirsk High School	1,488	-	-	-	-	-	-	-	-	-	-	-	481	472	494	41	82
Royal Oak School	573	-	97	119	124	118	115	-	-	-	-	-	-	-	-	-	9
Scenic Acres School	187	-	30	29	35	35	33	25	-	-	-	-	-	-	-	-	12
Silver Springs School	254	-	34	37	38	42	28	41	34	-	-	-	-	-	-	-	5
Simon Fraser School	660	-	-	-	-	-	-	75	113	154	167	151	-	-	-	-	9
Sir Winston Churchill High School	2,281	-	-	-	-	-	-	-	-	-	-	-	718	791	757	15	79
Terrace Road School	185	-	23	25	35	19	30	22	23	-	-	-	-	-	-	8	8
Thomas B. Riley School	215	-	-	-	-	-	-	-	-	63	58	65	-	-	-	29	3
Thomas B. Riley School	289	-	-	-	-	-	-	-	-	93	89	107	-	-	-	-	5
Tom Baines School	836	-	-	-	-	-	-	-	140	214	235	247	-	-	-	-	6
Tuscany School	230	-	33	36	40	43	62	-	-	-	-	-	-	-	-	16	10
Tuscany School	306	-	59	56	66	48	50	27	-	-	-	-	-	-	-	-	6
Twelve Mile Coulee School	791	-	-	-	-	-	-	149	156	162	148	176	-	-	-	-	22
West Dalhousie School	294	-	31	37	32	41	51	45	40	-	-	-	-	-	-	17	29
William D. Pratt School	870	-	-	-	-	-	-	168	165	168	168	196	-	-	-	5	15
AREA 1 TOTAL	18,314	-	1,020	1,193	1,334	1,156	1,250	1,313	1,410	1,369	1,432	1,491	1,726	1,718	1,639	263	813

CALGARY BOARD OF EDUCATION
End-September 2023

Schools highlighted in grey offer full-day kindergarten program.

SCSE = Self Contained Special Ed and represents system classes at the school level such as ACCESS, ALP, CSSI, etc

SCHOOL	Total	Pre-K*	K	GR1	GR2	GR3	GR4	GR5	GR6	GR7	GR8	GR9	GR10	GR11	GR12	SCSE	OOA
Alex Munro School	293	-	36	46	43	38	48	42	40	-	-	-	-	-	-	-	41
Balmoral School	561	-	-	-	-	-	-	113	110	116	113	109	-	-	-	-	10
Banff Trail School	369	-	63	74	62	60	60	50	-	-	-	-	-	-	-	-	6
Beddington Heights School	435	-	48	68	52	65	64	41	88	-	-	-	-	-	-	9	2
Branton School	635	-	-	-	-	-	-	-	103	186	164	182	-	-	-	-	38
Buchanan School	174	-	26	24	20	20	15	23	28	-	-	-	-	-	-	18	11
Buffalo Rubbing Stone School	652	-	74	122	114	100	124	118	-	-	-	-	-	-	-	-	4
Cambrian Heights School	369	-	35	66	56	57	68	37	41	-	-	-	-	-	-	9	2
Capitol Hill School	350	-	37	43	50	53	51	47	69	-	-	-	-	-	-	-	11
Captain Nichola Goddard School	940	-	-	-	-	-	-	-	248	248	218	226	-	-	-	-	6
Catherine Nichols Gunn School	305	-	38	37	48	36	37	54	55	-	-	-	-	-	-	-	29
Collingwood School	482	-	86	89	80	83	74	70	-	-	-	-	-	-	-	-	13
Colonel Irvine School	358	-	-	-	-	-	-	-	-	100	124	123	-	-	-	11	15
Colonel Irvine School	410	-	-	-	-	-	-	98	93	70	85	64	-	-	-	-	2
Colonel Sanders School	367	-	-	87	92	89	99	-	-	-	-	-	-	-	-	-	2
Dalhousie School	467	-	87	78	78	93	79	52	-	-	-	-	-	-	-	-	19
Dr. J. K. Mulloy School	503	-	97	104	103	100	99	-	-	-	-	-	-	-	-	-	5
Georges P. Vanier School	194	-	-	-	-	-	-	-	-	81	47	38	-	-	-	28	47
Georges P. Vanier School	346	-	-	-	-	-	-	-	85	93	87	81	-	-	-	-	14
Highwood School	343	-	64	74	72	66	67	-	-	-	-	-	-	-	-	-	14
Huntington Hills School	239	-	23	35	28	40	31	43	28	-	-	-	-	-	-	11	3
James Fowler High School	1,440	-	-	-	-	-	-	-	-	-	-	-	413	439	478	110	111
James Fowler High School	29	-	-	-	-	-	-	-	-	-	-	-	-	-	29	-	-
John G. Diefenbaker High School	1,396	-	-	-	-	-	-	-	-	-	-	-	439	339	618	-	45
Kenneth D. Taylor School	634	-	125	126	125	125	116	-	-	-	-	-	-	-	-	17	2
King George School	660	-	125	130	121	107	106	71	-	-	-	-	-	-	-	-	7
North Haven School	208	-	32	29	23	23	19	26	30	-	-	-	-	-	-	26	15
Panorama Hills School	531	-	56	88	90	76	96	102	-	-	-	-	-	-	-	23	20
Senator Patrick Burns School	152	-	-	-	-	-	-	-	-	40	51	46	-	-	-	15	19
Senator Patrick Burns School	599	-	-	-	-	-	-	-	166	130	161	142	-	-	-	-	-
Sir John A. Macdonald School	766	-	-	-	-	-	-	-	-	234	238	265	-	-	-	29	9
Sir John Franklin School	90	-	-	-	-	-	-	-	-	-	-	-	-	-	-	90	-
Sir John Franklin School	271	-	-	-	-	-	-	6	41	71	80	73	-	-	-	-	5
Thornccliffe School	204	-	19	26	31	23	42	32	31	-	-	-	-	-	-	-	18
Thornccliffe School	74	-	74	-	-	-	-	-	-	-	-	-	-	-	-	-	1
Varsity Acres School	586	-	91	124	127	77	92	75	-	-	-	-	-	-	-	-	10

CALGARY BOARD OF EDUCATION
End-September 2023

Schools highlighted in grey offer full-day kindergarten program.

SCSE = Self Contained Special Ed and represents system classes at the school level such as ACCESS, ALP, CSSI, etc

SCHOOL		Total	Pre-K*	K	GR1	GR2	GR3	GR4	GR5	GR6	GR7	GR8	GR9	GR10	GR11	GR12	SCSE	OOA
W. O. Mitchell School	Spanish Bilingual	346	-	52	65	70	51	63	45	-	-	-	-	-	-	-	-	13
William Aberhart High School		398	-	-	-	-	-	-	-	-	-	-	-	115	132	99	52	98
William Aberhart High School	French Immersion	811	-	-	-	-	-	-	-	-	-	-	-	266	272	273	-	11
William Aberhart High School	Spanish Bilingual	81	-	-	-	-	-	-	-	-	-	-	-	-	-	81	-	-
AREA 2 TOTAL		18,068	-	1,288	1,535	1,485	1,382	1,450	1,145	1,256	1,369	1,368	1,349	1,233	1,182	1,578	448	678
Abbeydale School		288	-	32	46	54	49	50	48	-	-	-	-	-	-	-	9	22
Belfast School		208	-	23	21	26	29	35	20	25	-	-	-	-	-	-	29	104
Cappy Smart School		206	-	27	32	32	26	31	33	-	-	-	-	-	-	-	25	15
Colonel Macleod School		186	-	-	-	-	-	-	-	-	65	56	34	-	-	-	31	4
Colonel Macleod School	Traditional Learning	446	-	-	-	-	-	-	89	93	93	85	86	-	-	-	-	14
Coventry Hills School		617	-	81	113	117	106	101	99	-	-	-	-	-	-	-	-	26
Crescent Heights High School		1,547	-	-	-	-	-	-	-	-	-	-	-	392	404	666	85	408
Crescent Heights High School	Spanish Bilingual	147	-	-	-	-	-	-	-	-	-	-	-	75	72	-	-	1
Dr. Gladys McKelvie Egbert School		443	-	-	-	-	-	-	-	98	106	109	98	-	-	-	32	23
Erin Woods School		308	-	44	55	42	52	52	49	-	-	-	-	-	-	-	14	17
Ernest Morrow School		620	-	-	-	-	-	-	-	106	136	162	138	-	-	-	78	29
Forest Lawn High School		1,479	-	-	-	-	-	-	-	-	-	-	-	448	456	469	106	118
G. W. Skene School		176	-	-	-	-	60	54	62	-	-	-	-	-	-	-	-	6
Hidden Valley School		213	-	38	61	61	53	-	-	-	-	-	-	-	-	-	-	3
Hidden Valley School	French Immersion	220	-	49	53	57	61	-	-	-	-	-	-	-	-	-	-	4
Ian Bazalgette School		446	-	-	-	-	-	-	-	127	105	126	88	-	-	-	-	24
Ian Bazalgette School	Science	210	-	-	-	-	-	-	-	54	60	49	47	-	-	-	-	2
Jack James High School		420	-	-	-	-	-	-	-	-	-	-	-	122	134	132	32	3
James Short Memorial School		159	-	53	52	54	-	-	-	-	-	-	-	-	-	-	-	10
Keeler School		543	-	78	74	84	78	77	80	72	-	-	-	-	-	-	-	33
Mount View School		204	-	24	24	37	29	24	25	24	-	-	-	-	-	-	17	29
North Trail High School		1,285	-	-	-	-	-	-	-	-	-	-	-	684	581	-	20	11
Northern Lights School		560	-	83	98	109	97	98	75	-	-	-	-	-	-	-	-	10
Nose Creek School		835	-	-	-	-	-	-	-	195	203	199	202	-	-	-	36	21
Patrick Airlie School		206	-	29	44	32	29	40	32	-	-	-	-	-	-	-	-	23
Penbrooke Meadows School		226	-	30	32	31	26	37	34	-	-	-	-	-	-	-	36	19
Piitoayis Family School	Colonel Walker	182	-	23	21	20	33	29	31	25	-	-	-	-	-	-	-	1
Radisson Park School		311	-	42	51	61	51	58	48	-	-	-	-	-	-	-	-	33
Riverside School	System Classes	10	-	-	-	-	-	-	-	-	-	-	-	-	-	-	10	-
Riverside School	Science	638	-	49	47	51	49	55	58	60	92	93	84	-	-	-	-	21
Roland Michener School		162	-	28	24	24	26	20	18	-	-	-	-	-	-	-	22	12
Rosedale School		271	-	17	23	29	35	20	29	29	34	24	31	-	-	-	-	29

CALGARY BOARD OF EDUCATION
End-September 2023

Schools highlighted in grey offer full-day kindergarten program.

SCSE = Self Contained Special Ed and represents system classes at the school level such as ACCESS, ALP, CSSI, etc

SCHOOL	Total	Pre-K*	K	GR1	GR2	GR3	GR4	GR5	GR6	GR7	GR8	GR9	GR10	GR11	GR12	SCSE	OOA
Rosemont School	231	-	32	29	33	27	37	39	29	-	-	-	-	-	-	5	14
Stanley Jones School	369	-	52	63	59	65	45	44	41	-	-	-	-	-	-	-	27
Stanley Jones School	Alice Jamieson	139	-	-	-	-	17	18	19	21	37	27	-	-	-	-	-
Sunnyside School	172	-	27	31	25	20	27	24	18	-	-	-	-	-	-	-	32
Valley Creek School	476	-	-	-	-	-	62	66	72	84	85	87	-	-	-	20	9
Valley Creek School	French Immersion	279	-	-	-	-	58	39	56	39	43	44	-	-	-	-	7
Valley View School	214	-	37	33	41	39	37	27	-	-	-	-	-	-	-	-	21
Valley View School	Science	279	-	44	50	48	42	47	-	-	-	-	-	-	-	-	2
Vista Heights School	160	-	20	26	16	18	22	21	13	-	-	-	-	-	-	24	4
West Dover School	200	-	39	31	26	30	36	20	-	-	-	-	-	-	-	18	26
AREA 3 TOTAL	16,291	-	1,001	1,134	1,169	1,136	1,164	1,175	1,156	1,038	1,068	966	1,721	1,647	1,267	649	1,217
Annie Foote School	474	-	89	85	62	50	53	61	74	-	-	-	-	-	-	-	21
Annie Gale School	329	-	-	-	-	-	-	-	-	102	88	106	-	-	-	33	14
Annie Gale School	Traditional Learning	246	-	-	-	-	-	-	61	72	60	53	-	-	-	-	3
Bob Edwards School	296	-	-	-	-	-	-	-	88	67	75	57	-	-	-	9	20
Bob Edwards School	French Immersion	186	-	-	-	-	-	-	31	63	49	43	-	-	-	-	-
Cecil Swanson School	351	-	30	48	57	50	42	54	52	-	-	-	-	-	-	18	42
Chief Justice Milvain School	160	-	31	22	16	28	20	25	18	-	-	-	-	-	-	-	2
Chief Justice Milvain School	Traditional Learning	373	-	44	76	76	70	53	54	-	-	-	-	-	-	-	2
Chris Akkerman School	Traditional Learning	617	-	102	106	102	102	104	101	-	-	-	-	-	-	-	4
Clarence Sansom School	661	-	-	-	-	-	-	-	-	265	191	170	-	-	-	35	23
Colonel J. Fred Scott School	504	-	56	69	65	75	70	83	86	-	-	-	-	-	-	-	24
Crossing Park School	1,106	-	54	78	104	64	112	87	118	119	184	186	-	-	-	-	37
Douglas Harkness School	321	-	38	55	42	47	46	42	51	-	-	-	-	-	-	-	3
Dr. Gordon Higgins School	688	-	-	-	-	-	-	-	-	241	196	222	-	-	-	-	29
Falconridge School	489	-	68	83	89	54	73	60	46	-	-	-	-	-	-	16	35
Grant MacEwan School	659	-	77	115	100	82	115	88	82	-	-	-	-	-	-	-	19
Guy Weadick School	398	-	50	75	60	68	64	30	51	-	-	-	-	-	-	-	5
Hugh A. Bennett School	628	-	119	133	126	114	127	-	-	-	-	-	-	-	-	9	8
Lester B. Pearson High School	1,621	-	-	-	-	-	-	-	-	-	-	-	561	483	549	28	138
Louise Dean School	27	-	-	-	-	-	-	-	-	-	-	-	1	2	24	-	26
Manmeet Singh Bhullar School	520	-	58	89	76	70	75	81	71	-	-	-	-	-	-	-	11
Marlborough School	278	-	37	68	37	39	43	54	-	-	-	-	-	-	-	-	4
Mayland Heights School	165	-	25	21	30	18	25	22	24	-	-	-	-	-	-	-	63
Mayland Heights School	French Immersion	272	-	39	65	47	40	44	37	-	-	-	-	-	-	-	5
Monterey Park School	525	-	95	70	64	58	75	74	63	-	-	-	-	-	-	26	4
Nelson Mandela High School	1,869	-	-	-	-	-	-	-	-	-	-	-	624	609	604	32	45

CALGARY BOARD OF EDUCATION
End-September 2023

Schools highlighted in grey offer full-day kindergarten program.

SCSE = Self Contained Special Ed and represents system classes at the school level such as ACCESS, ALP, CSSI, etc

SCHOOL	Total	Pre-K*	K	GR1	GR2	GR3	GR4	GR5	GR6	GR7	GR8	GR9	GR10	GR11	GR12	SCSE	OOA
O. S. Geiger School	444	-	48	82	58	63	53	54	57	-	-	-	-	-	-	29	13
Peter Lougheed School	968	-	-	-	-	-	-	179	189	205	201	181	-	-	-	13	7
Pineridge School	328	-	21	25	24	33	39	91	61	-	-	-	-	-	-	34	25
Prairie Sky School	910	-	50	126	112	92	122	110	88	90	59	61	-	-	-	-	11
Rundle School	468	-	58	71	73	88	70	75	33	-	-	-	-	-	-	-	10
Saddle Ridge School	640	-	123	134	125	130	128	-	-	-	-	-	-	-	-	-	10
Sir Wilfrid Laurier School	497	-	-	-	-	-	-	-	121	122	125	123	-	-	-	6	22
Taradale School	698	-	143	148	130	130	147	-	-	-	-	-	-	-	-	-	10
Ted Harrison School	890	-	-	-	-	-	-	170	165	173	177	183	-	-	-	22	16
Terry Fox School	625	-	-	-	-	-	-	-	-	186	183	191	-	-	-	65	4
AREA 4 TOTAL	20,231	-	1,455	1,844	1,675	1,565	1,700	1,632	1,630	1,705	1,588	1,576	1,186	1,094	1,177	404	701
Acadia School	459	-	60	76	69	61	79	58	56	-	-	-	-	-	-	-	21
Auburn Bay School	574	-	70	88	90	101	113	96	-	-	-	-	-	-	-	16	1
Bayside School	559	-	102	103	91	90	85	88	-	-	-	-	-	-	-	-	16
Bridlewood School	426	-	46	75	67	71	59	50	58	-	-	-	-	-	-	-	24
Centennial High School	1,595	-	-	-	-	-	-	-	-	-	-	-	546	521	476	52	114
Chaparral School	506	-	57	88	69	79	68	65	80	-	-	-	-	-	-	-	9
Copperfield School	573	-	90	92	92	88	114	97	-	-	-	-	-	-	-	-	12
Cranston School	634	-	94	122	119	110	88	101	-	-	-	-	-	-	-	-	9
Deer Run School	363	-	43	58	45	56	46	46	54	-	-	-	-	-	-	15	11
Douglasdale School	379	-	52	48	76	62	77	64	-	-	-	-	-	-	-	-	23
Dr. George Stanley School	674	-	-	-	-	-	-	-	162	168	154	190	-	-	-	-	9
Dr. Martha Cohen School	846	-	-	-	-	-	-	-	232	232	191	191	-	-	-	-	7
Fairview School	902	-	-	-	-	-	152	156	154	156	145	139	-	-	-	-	1
Fish Creek School	588	-	57	77	76	92	97	98	91	-	-	-	-	-	-	-	78
Haultain Memorial School	191	-	17	20	30	27	34	31	32	-	-	-	-	-	-	-	10
Joane Cardinal-Schubert High School	1,879	-	-	-	-	-	-	-	-	-	-	-	674	660	545	-	21
Lake Bonavista School	371	-	60	72	50	52	60	39	38	-	-	-	-	-	-	-	-
Lakeshore School	938	-	-	-	-	-	-	-	282	247	220	189	-	-	-	-	5
Le Roi Daniels School	581	-	129	149	150	153	-	-	-	-	-	-	-	-	-	-	1
Lord Beaverbrook High School	1,722	-	-	-	-	-	-	-	-	-	-	-	593	603	464	62	314
Lord Beaverbrook High School	8	-	-	-	-	-	-	-	-	-	-	-	-	-	8	-	-
Mahogany School	675	-	101	140	146	102	96	90	-	-	-	-	-	-	-	-	3
Maple Ridge School	398	-	79	88	75	81	75	-	-	-	-	-	-	-	-	-	1
McKenzie Highlands School	835	-	-	-	-	-	47	132	145	130	158	198	-	-	-	25	61
McKenzie Lake School	546	-	60	105	107	98	76	83	-	-	-	-	-	-	-	17	6
McKenzie Towne School	564	-	120	114	101	133	70	-	-	-	-	-	-	-	-	26	4

CALGARY BOARD OF EDUCATION
End-September 2023

Schools highlighted in grey offer full-day kindergarten program.

SCSE = Self Contained Special Ed and represents system classes at the school level such as ACCESS, ALP, CSSI, etc

SCHOOL	Total	Pre-K*	K	GR1	GR2	GR3	GR4	GR5	GR6	GR7	GR8	GR9	GR10	GR11	GR12	SCSE	OOA
Midnapore School	268	-	24	44	44	25	45	38	48	-	-	-	-	-	-	-	18
Midnapore School	148	-	38	30	26	21	33	-	-	-	-	-	-	-	-	-	3
MidSun School	637	-	-	-	-	-	-	-	-	195	193	211	-	-	-	38	43
Mountain Park School	579	-	-	-	-	-	-	-	125	147	127	170	-	-	-	10	26
New Brighton School	601	-	80	113	92	92	113	111	-	-	-	-	-	-	-	-	6
Prince Of Wales School	294	-	57	59	56	36	58	13	15	-	-	-	-	-	-	-	4
R. T. Alderman School	670	-	-	-	-	-	-	111	113	160	147	139	-	-	-	-	13
Samuel W. Shaw School	770	-	-	-	-	-	-	103	126	175	158	178	-	-	-	30	12
Sibylla Kiddle School	570	-	86	107	104	109	84	80	-	-	-	-	-	-	-	-	36
Somerset School	235	-	45	53	43	48	46	-	-	-	-	-	-	-	-	-	19
Willow Park School	521	-	-	-	-	-	-	31	62	146	135	147	-	-	-	-	7
Wilma Hansen School	401	-	-	-	-	-	-	25	24	93	118	117	-	-	-	24	23
AREA 5 TOTAL	23,480	-	1,567	1,921	1,818	1,787	1,815	1,806	1,897	1,849	1,746	1,869	1,813	1,784	1,493	315	971
A. E. Cross School	524	-	-	-	-	-	-	-	-	175	168	152	-	-	-	29	38
A. E. Cross School	64	-	-	-	-	-	-	-	-	11	31	22	-	-	-	-	2
Altadore School	392	-	52	59	64	65	53	49	50	-	-	-	-	-	-	-	18
Alternative High School	134	-	-	-	-	-	-	-	-	-	-	-	20	35	48	31	1
Andrew Sibbald School	363	-	42	57	43	57	50	57	57	-	-	-	-	-	-	-	20
Banting and Best School	175	-	49	42	50	34	-	-	-	-	-	-	-	-	-	-	3
Braeside School	224	-	21	31	39	22	36	34	41	-	-	-	-	-	-	-	28
Canyon Meadows School	432	-	61	87	73	69	83	59	-	-	-	-	-	-	-	-	20
Cedarbrae School	176	-	19	25	25	28	28	25	17	-	-	-	-	-	-	9	20
Central Memorial High School	1,599	-	-	-	-	-	-	-	-	-	-	-	534	508	536	21	324
Chinook Park School	228	-	22	35	35	44	32	33	27	-	-	-	-	-	-	-	14
Chinook Park School	265	-	41	49	35	47	34	27	32	-	-	-	-	-	-	-	12
David Thompson School	121	-	-	-	-	-	-	-	-	41	40	40	-	-	-	-	5
David Thompson School	479	-	-	-	-	-	-	55	78	129	108	109	-	-	-	-	8
Dr. E. P. Scarlett High School	1,301	-	-	-	-	-	-	-	-	-	-	-	433	436	432	-	194
Dr. E. P. Scarlett High School	319	-	-	-	-	-	-	-	-	-	-	-	127	104	88	-	2
Dr. E. P. Scarlett High School	38	-	-	-	-	-	-	-	-	-	-	-	-	-	38	-	-
Dr. Freda Miller School	479	-	67	89	98	85	63	77	-	-	-	-	-	-	-	-	8
Ethel M. Johnson School	252	-	19	29	35	23	35	21	44	-	-	-	-	-	-	46	8
Eugene Coste School	366	-	51	76	69	69	47	54	-	-	-	-	-	-	-	-	33
Evergreen School	423	-	67	58	71	70	72	68	-	-	-	-	-	-	-	17	38
Glenbrook School	288	-	30	40	43	34	46	48	47	-	-	-	-	-	-	-	16
Glenmeadows School	376	-	68	71	69	51	39	38	40	-	-	-	-	-	-	-	24
Harold Panabaker School	310	-	-	-	-	-	-	-	-	92	77	110	-	-	-	31	10
Harold Panabaker School	95	-	-	-	-	-	-	20	25	20	17	13	-	-	-	-	-
Haysboro School	215	-	28	29	36	31	25	33	33	-	-	-	-	-	-	-	17

CALGARY BOARD OF EDUCATION
End-September 2023

Schools highlighted in grey offer full-day kindergarten program.

SCSE = Self Contained Special Ed and represents system classes at the school level such as ACCESS, ALP, CSSI, etc

SCHOOL	Total	Pre-K*	K	GR1	GR2	GR3	GR4	GR5	GR6	GR7	GR8	GR9	GR10	GR11	GR12	SCSE	OOA
Henry Wise Wood High School	1,814	-	-	-	-	-	-	-	-	-	-	-	640	627	514	33	206
Janet Johnstone School	305	-	52	57	67	56	73	-	-	-	-	-	-	-	-	-	2
Janet Johnstone School	176	-	33	54	35	30	24	-	-	-	-	-	-	-	-	-	-
John Ware School	444	-	-	-	-	-	-	-	-	138	142	151	-	-	-	13	33
Louis Riel School	166	-	-	-	-	-	14	20	15	20	55	42	-	-	-	-	-
Louis Riel School	670	-	61	66	69	52	55	78	56	89	82	62	-	-	-	-	17
Marshall Springs School	659	-	-	-	-	-	-	-	150	158	187	159	-	-	-	5	19
Nellie McClung School	371	-	43	60	56	50	54	47	61	-	-	-	-	-	-	-	63
Nickle School	186	-	-	-	-	-	-	-	-	57	40	46	-	-	-	43	6
Riverbend School	299	-	51	67	50	42	46	20	23	-	-	-	-	-	-	-	20
Robert Warren School	291	-	-	-	-	-	-	-	84	60	80	67	-	-	-	-	1
Ron Southern School	476	-	67	77	61	64	65	63	64	-	-	-	-	-	-	15	16
Sam Livingston School	421	-	75	91	89	83	83	-	-	-	-	-	-	-	-	-	6
Sherwood School	373	-	-	-	-	-	54	54	39	79	75	66	-	-	-	6	25
Sundance School	514	-	90	97	84	71	64	65	43	-	-	-	-	-	-	-	10
Woodbine School	393	-	50	51	70	60	60	61	41	-	-	-	-	-	-	-	9
Woodlands School	252	-	32	37	42	40	33	34	34	-	-	-	-	-	-	-	19
Woodman School	197	-	-	-	-	-	-	-	-	68	71	58	-	-	-	-	13
Woodman School	288	-	-	-	-	-	-	21	23	67	92	85	-	-	-	-	5
AREA 6 TOTAL	17,933	-	1,191	1,434	1,408	1,277	1,268	1,161	1,124	1,204	1,265	1,182	1,754	1,710	1,656	299	1,333
Alexander Ferguson School	234	-	38	38	31	32	36	35	24	-	-	-	-	-	-	-	28
All Boys Program	51	-	-	5	7	11	8	10	10	-	-	-	-	-	-	-	-
Battalion Park School	541	-	52	60	89	76	84	78	84	-	-	-	-	-	-	18	3
Bishop Pinkham School	157	-	-	-	-	-	-	-	-	45	50	56	-	-	-	6	14
Bishop Pinkham School	434	-	-	-	-	-	-	-	-	133	146	155	-	-	-	-	5
Briar Hill School	223	-	31	33	33	29	31	35	31	-	-	-	-	-	-	-	77
Colonel Walker School	161	-	28	31	28	20	22	15	17	-	-	-	-	-	-	-	12
Connaught School	460	-	86	72	74	74	55	47	52	-	-	-	-	-	-	-	9
Dr. Roberta Bondar School	586	-	48	86	96	89	98	86	83	-	-	-	-	-	-	-	11
Earl Grey School	321	-	39	51	43	45	49	42	36	-	-	-	-	-	-	16	43
Elbow Park School	210	-	18	35	35	35	28	37	22	-	-	-	-	-	-	-	6
Elboya School	382	-	26	49	44	41	33	39	47	32	31	40	-	-	-	-	27
Elboya School	326	-	-	-	-	-	-	53	48	73	80	72	-	-	-	-	14
Ernest Manning High School	1,684	-	-	-	-	-	-	-	-	-	-	-	623	537	511	13	79
Glamorgan School	756	-	84	77	81	78	81	83	84	66	61	61	-	-	-	-	4
Glendale School	259	-	34	35	41	35	45	28	41	-	-	-	-	-	-	-	38
Griffith Woods School	961	-	79	80	101	73	100	87	116	116	87	122	-	-	-	-	2
Hillhurst School	278	-	21	41	31	31	57	52	45	-	-	-	-	-	-	-	43
Jennie Elliott School	578	-	72	92	87	89	74	65	66	-	-	-	-	-	-	33	11

CALGARY BOARD OF EDUCATION
End-September 2023

Schools highlighted in grey offer full-day kindergarten program.

SCSE = Self Contained Special Ed and represents system classes at the school level such as ACCESS, ALP, CSSI, etc

SCHOOL		Total	Pre-K*	K	GR1	GR2	GR3	GR4	GR5	GR6	GR7	GR8	GR9	GR10	GR11	GR12	SCSE	OOA
Killamey School	Montessori	346	-	56	67	56	46	50	41	30	-	-	-	-	-	-	-	17
Mount Royal School		395	-	-	-	-	-	-	-	-	120	149	121	-	-	-	5	7
Olympic Heights School		487	-	55	55	85	65	64	90	73	-	-	-	-	-	-	-	19
Queen Elizabeth School		405	-	59	59	72	57	59	50	49	-	-	-	-	-	-	-	12
Queen Elizabeth High School		997	-	-	-	-	-	-	-	-	166	174	156	118	166	142	75	115
Ramsay School		309	-	43	50	47	45	47	44	33	-	-	-	-	-	-	-	29
Richmond School		325	-	46	48	45	55	55	41	35	-	-	-	-	-	-	-	22
Rideau Park School		460	-	24	32	35	33	31	35	32	70	80	88	-	-	-	-	49
Simons Valley School		678	-	93	100	110	84	97	100	85	-	-	-	-	-	-	9	36
Sunalta School		349	-	44	46	57	54	53	42	53	-	-	-	-	-	-	-	103
University School		355	-	45	55	50	49	53	49	45	-	-	-	-	-	-	9	36
Vincent Massey School		784	-	-	-	-	-	-	-	-	247	265	247	-	-	-	25	23
West Ridge School		835	-	-	-	-	-	-	124	161	175	177	198	-	-	-	-	25
West Springs School		608	-	94	117	125	145	127	-	-	-	-	-	-	-	-	-	-
Western Canada High School		1,495	-	-	-	-	-	-	-	-	-	-	-	492	471	532	-	72
Western Canada High School	French Immersion	705	-	-	-	-	-	-	-	-	-	-	-	265	237	203	-	8
Westgate School	French Immersion	600	-	78	96	81	81	99	83	82	-	-	-	-	-	-	-	4
Wildwood School		445	-	52	62	65	68	53	65	49	-	-	-	-	-	-	31	29
William Reid School	French Immersion	305	-	51	63	76	58	57	-	-	-	-	-	-	-	-	-	12
AREA 7 TOTAL		19,485	-	1,396	1,635	1,725	1,598	1,646	1,556	1,533	1,243	1,300	1,316	1,498	1,411	1,388	240	1,044
TOTAL		133,802	-	8,918	10,696	10,614	9,901	10,293	9,788	10,006	9,777	9,767	9,749	10,931	10,546	10,198	2,618	6,757

CALGARY BOARD OF EDUCATION
End-September 2023

Schools highlighted in grey offer full-day kindergarten program.

SCSE = Self Contained Special Ed and represents system classes at the school level such as ACCESS, ALP, CSSI, etc

SCHOOL	Total	Pre-K*	K	GR1	GR2	GR3	GR4	GR5	GR6	GR7	GR8	GR9	GR10	GR11	GR12	SCSE	OOA
--------	-------	--------	---	-----	-----	-----	-----	-----	-----	-----	-----	-----	------	------	------	------	-----

OUTREACH PROGRAMS (includes NEXUS)

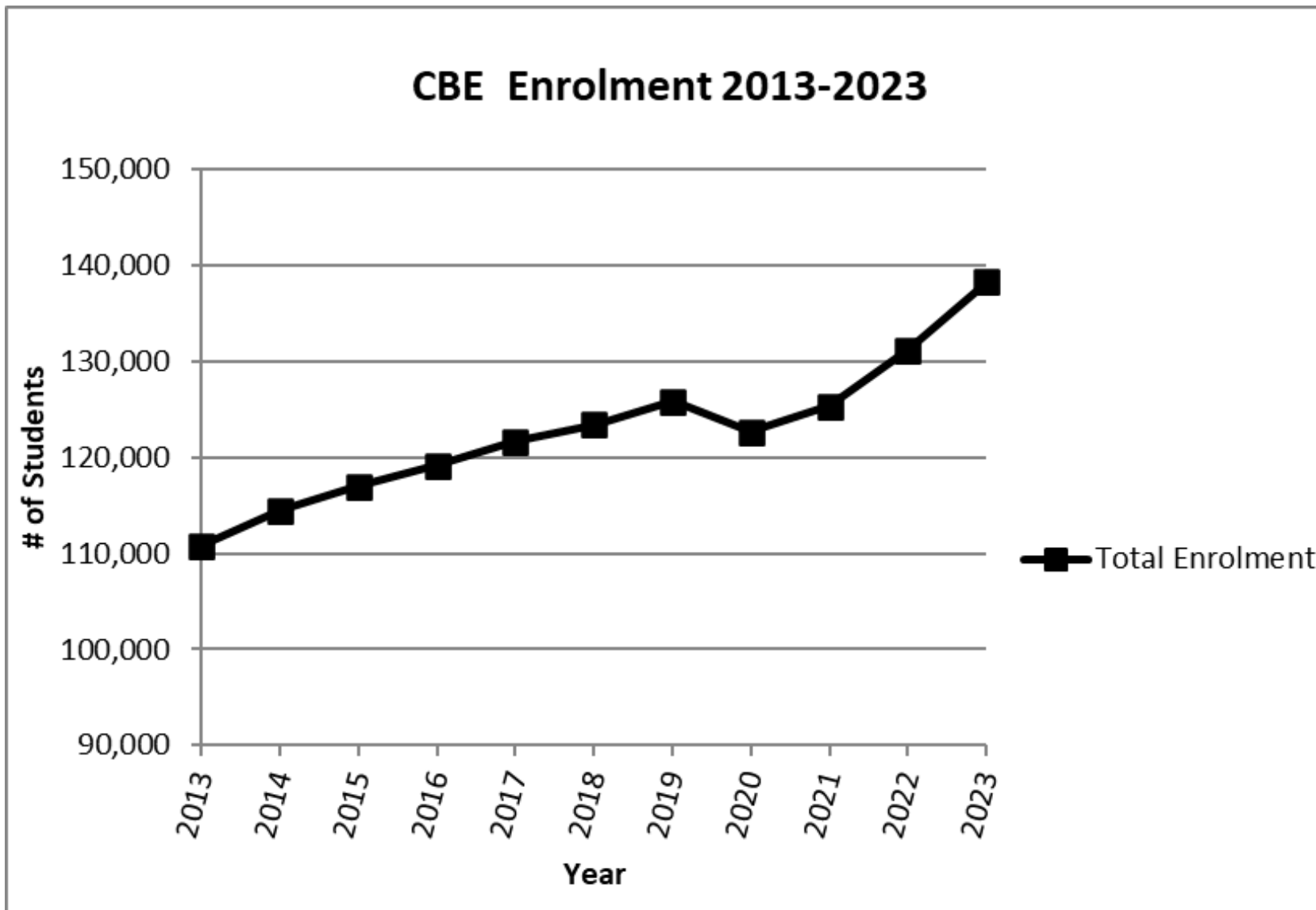
Discovering Choices	Downtown	483	-	-	-	-	-	-	-	-	-	-	-	2	46	422	13
Discovering Choices II	Marlborough	303	-	-	-	-	-	-	-	-	-	-	-	2	28	273	-
Start Outreach - Bowness	Bowness	157	-	-	-	-	-	-	-	-	-	-	-	1	15	133	8
Westbrook Outreach	Westbrook	177	-	-	-	-	-	-	-	-	-	-	-	11	22	144	-
TOTAL OUTREACH PROGRAMS		1,120	-	-	-	-	-	-	-	-	-	-	-	16	111	972	21

UNIQUE SETTINGS

Adolescent Day Treatment Program	6	-	-	-	-	-	-	-	-	-	-	-	-	1	1	3	1	-
Adolescent Mental Health Services	27	-	1	-	-	-	2	-	1	1	4	3	7	5	3	-	-	-
Children's Village School	73	-	-	5	7	10	13	11	10	-	-	-	-	-	-	-	-	17
Christine Meikle School	123	-	-	-	-	-	-	-	1	10	16	22	26	19	29	-	-	-
Dr. Gordon Townsend School	24	-	1	-	1	3	1	2	2	4	5	1	1	1	2	-	-	-
Dr. Oakley School	162	-	-	-	-	2	17	40	48	30	12	5	-	-	-	-	-	8
Emily Follensbee School	92	-	2	15	11	10	18	8	10	11	6	1	-	-	-	-	-	-
Niitsitapi Learning Centre	182	37	50	44	51	-	-	-	-	-	-	-	-	-	-	-	-	-
West View School	37	-	-	-	-	-	-	-	-	-	1	1	8	14	13	-	-	-
William Roper Hull School	95	-	-	-	1	3	2	6	6	11	12	16	14	14	10	-	-	-
Wood's Homes School	65	-	-	-	-	-	-	-	1	11	10	11	14	10	8	-	-	-
TOTAL UNIQUE SETTINGS	886	37	54	64	71	28	53	67	79	78	66	61	71	66	66	66	25	-

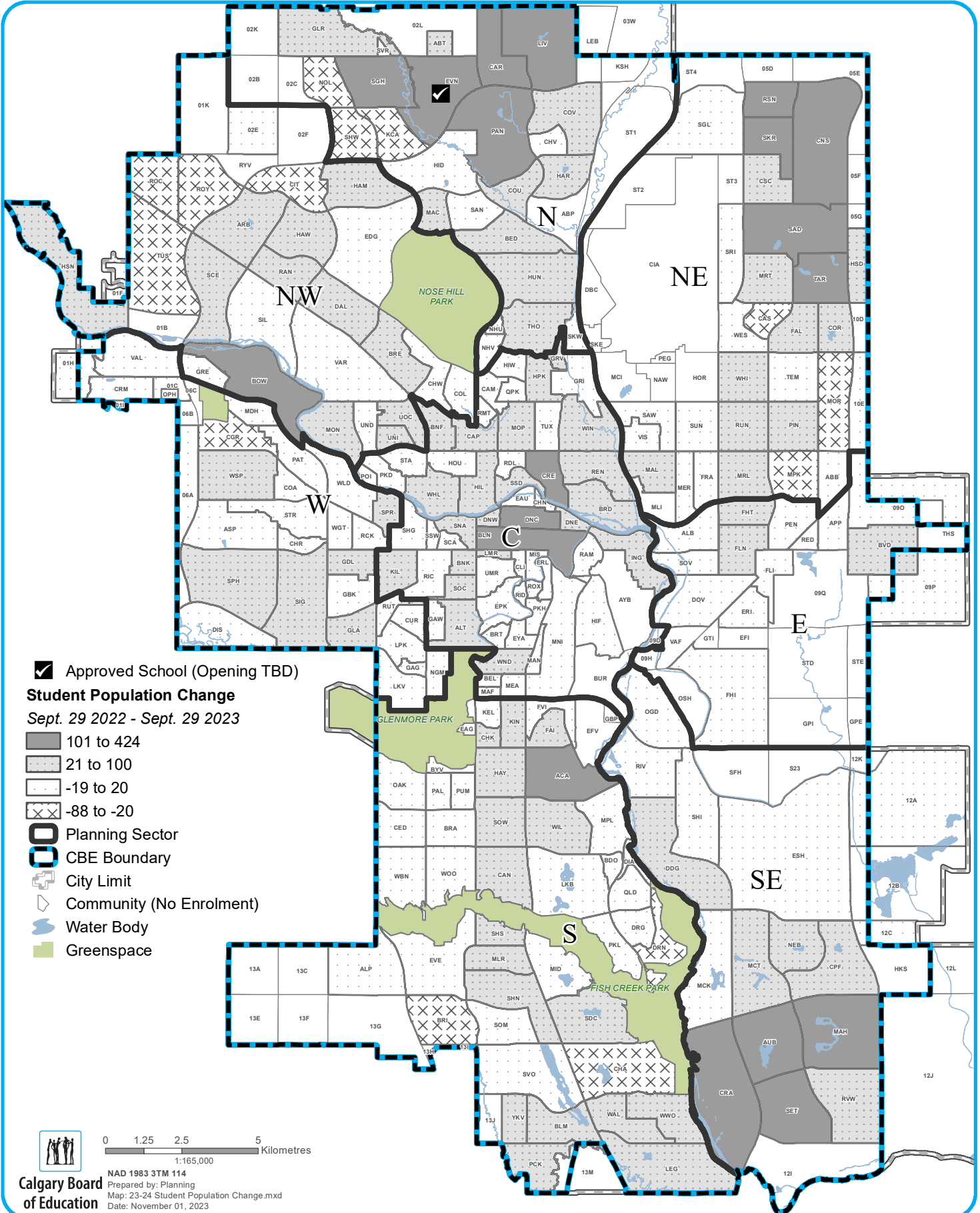
Home Education	Windsor Park	406	-	-	37	45	36	62	37	56	56	36	24	7	4	6	-	-	
CBe-learn*		1,123	-	-	18	14	30	38	41	57	53	67	115	70	93	527	-	-	
Chinook Learning Services*		907	-	-	-	-	-	-	-	-	-	-	2	-	905	-	-	-	
SUB-TOTAL		2,436	-	-	55	59	66	100	78	113	109	103	139	79	97	1,438	-	-	
*includes students 20 years old and older																			

TOTAL ENROLMENT	138,244	37	8,972	10,815	10,744	9,995	10,446	9,933	10,198	9,964	9,936	9,949	11,097	10,820	12,674	2,664	6,757
------------------------	----------------	-----------	--------------	---------------	---------------	--------------	---------------	--------------	---------------	--------------	--------------	--------------	---------------	---------------	---------------	--------------	--------------



Student Population Change (By Community)

September 29, 2022 to September 29, 2023



☑ Approved School (Opening TBD)

Student Population Change
 Sept. 29 2022 - Sept. 29 2023

■ 101 to 424

▨ 21 to 100

□ -19 to 20

▩ -88 to -20

▭ Planning Sector

▭ CBE Boundary

▭ City Limit

▭ Community (No Enrolment)

▭ Water Body

▭ Greenspace



0 1.25 2.5 5
 Kilometres
 1:165,000

Alternative Program Enrolment by School and by Grade

	K	1	2	3	4	5	6	7	8	9	10	11	12	Total
Alice Jamieson Girls' Academy					17	18	19	21	37	27				139
Stanley Jones School					17	18	19	21	37	27				139
All - Boys School		5	7	11	8	10	10							51
All Boys Program		5	7	11	8	10	10							51
Arts-Centred Learning						37	103	217	215	220	0	0	37	829
James Fowler High School													29	29
Lord Beaverbrook High School													8	8
Sir John Franklin School						6	41	71	80	73				271
Willow Park School						31	62	146	135	147				521
Chinese (Mandarin) Bilingual	152	151	149	136	133	118	118	90	102	77				1226
Colonel Irvine School						98	93	70	85	64				410
Harold Panabaker School						20	25	20	17	13				95
Highwood School	64	74	72	66	67									343
Marion Carson School	50	47	51	49	33									230
Midnapore School	38	30	26	21	33									148
French Immersion	794	952	880	763	771	603	627	822	820	816	658	613	564	9683
Banff Trail School	63	74	62	60	60	50								369
Bishop Pinkham School								133	146	155				434
Bob Edwards School							31	63	49	43				186
Branton School							103	186	164	182				635
Chinook Park School	41	49	35	47	34	27	32							265
David Thompson School						55	78	129	108	109				479
Dr. E. P. Scarlett High School											127	104	88	319
Elboya School						53	48	73	80	72				326
F. E. Osborne School							46	39	51	45				181
Georges P. Vanier School							85	93	87	81				346
Hidden Valley School	49	53	57	61										220
Janet Johnstone School	33	54	35	30	24									176
King George School	125	130	121	107	106	71								660
Mayland Heights School	39	65	47	40	44	37								272
Sam Livingston School	75	91	89	83	83									421
Sundance School	90	97	84	71	64	65	43							514
Tuscany School	59	56	66	48	50	27								306
Valley Creek School					58	39	56	39	43	44				279
Varsity Acres School	91	124	127	77	92	75								586
Western Canada High School											265	237	203	705
Westgate School	78	96	81	81	99	83	82							600
William Aberhart High School											266	272	273	811
William Reid School	51	63	76	58	57									305
Woodman School						21	23	67	92	85				288

Alternative Program Enrolment by School and by Grade

	K	1	2	3	4	5	6	7	8	9	10	11	12	Total
German Bilingual	17	31	23	16	23	12	12							134
Bowcroft School	17	31	23	16	23	12	12							134
Indigenous Focus	23	21	20	33	29	31	25							182
Piitoyis Family School	23	21	20	33	29	31	25							182
Montessori	172	189	171	143	145	116	83							1019
Captain John Palliser School	56	50	65	45	35	36	15							302
Killarney School	56	67	56	46	50	41	30							346
Lake Bonavista School	60	72	50	52	60	39	38							371
Science School	233	251	243	230	227	294	283	401	371	332				2865
Ian Bazalgette School							54	60	49	47				210
Louis Riel School	61	66	69	52	55	78	56	89	82	62				670
Maple Ridge School	79	88	75	81	75									398
R. T. Alderman School						111	113	160	147	139				670
Riverside School	49	47	51	49	55	58	60	92	93	84				638
Valley View School	44	50	48	48	42	47								279
Spanish Bilingual	405	466	439	416	385	318	290	201	272	231	75	72	119	3689
A. E. Cross School								11	31	22				64
Canyon Meadows School	61	87	73	69	83	59								432
Collingwood School	86	89	80	83	74	70								482
Crescent Heights High School											75	72		147
Dalhousie School	87	78	78	93	79	52								467
Dr. E. P. Scarlett High School													38	38
Eugene Coste School	51	76	69	69	47	54								366
Glenmeadows School	68	71	69	51	39	38	40							376
Robert Warren School							84	60	80	67				291
Senator Patrick Burns School							166	130	161	142				599
W. O. Mitchell School	52	65	70	51	63	45								346
William Aberhart High School													81	81
Traditional Learning Centre	655	723	725	698	689	694	728	718	678	678				6986
Annie Gale School							61	72	60	53				246
Balmoral School						113	110	116	113	109				561
Brentwood School	125	124	121	106	101	98	105							780
Chief Justice Milvain School	44	76	76	70	53	54								373
Chris Akkerman School	102	106	102	102	104	101								617
Colonel Macleod School						89	93	93	85	86				446
Colonel Sanders School		87	92	89	99									367
Dr. J. K. Mulloy School	97	104	103	100	99									503
Fairview School					152	156	154	156	145	139				902
Glamorgan School	84	77	81	78	81	83	84	66	61	61				756
Le Roi Daniels School	129	149	150	153										581
Sir Wilfrid Laurier School							121	122	125	123				491
Thomas B. Riley School								93	89	107				289
Thornclyffe School	74													74
Grand Total	2451	2789	2657	2446	2427	2251	2298	2470	2495	2381	733	685	720	26803

**CALGARY BOARD OF EDUCATION
SPECIALIZED CLASSES 2023-2024**

Area	School	Program	# of Classes
1	Arbour Lake (5-9)	Learning & Literacy	2
1	Arbour Lake (5-9)	The Class	2
1	Belvedere Parkway (K-6)	Bridges	1
1	Bowness (10-12)	Paced Learning Program (PLP)	1
1	Captain John Palliser (K-6)	Learning & Literacy	1
1	Discovering Choices	Nexus	3
1	H.D. Cartwright (7-9)	Attitude, Community Competence, Elements (of Academic Curriculum), Social Skills (ACCESS)	1
1	H.D. Cartwright (7-9)	Learning & Literacy	1
1	Ranchlands (K-6)	Bridges	1
1	Ranchlands (K-6)	Paced Learning Program (PLP)	1
1	Robert Thirsk (10-12)	Adapted Learning Program (ALP)	1
1	Robert Thirsk (10-12)	Communication, Sensory and Social Interaction (CSSI)	1
1	Robert Thirsk (10-12)	Paced Learning Program (PLP)	1
1	Robert Thirsk (10-12)	Teaching of Attitude, Social Skills and Communication (TASC)	1
1	Sir Winston Churchill (10-12)	The Class	1
1	Terrace Road (K-6)	Paced Learning Program (PLP)	1
1	Thomas B. Riley (7-9)	Adapted Learning Program (ALP)	1
1	Thomas B. Riley (7-9)	Paced Learning Program (PLP)	1
1	Tuscany (K-4)	Enhanced Educational Supports (EES)	2
1	West Dalhousie (K-6)	Enhanced Educational Supports (EES)	2
1	William D. Pratt (5-9)	Teaching of Attitude, Social Skills and Communication (TASC)	1
2	Beddington Heights (K-6)	The Class	1
2	Buchanan (K-6)	Enhanced Educational Supports (EES)	2
2	Cambrian Heights (K-6)	Bridges	1
2	Children's Village	Enhanced Educational Supports II	3
2	Colonel Irvine (7-9)	Bridges	1
2	Georges P. Vanier (7-9)	Learning & Literacy	2
2	Huntington Hills (K-6)	Learning & Literacy	1
2	James Fowler High (10-12)	Literacy, English & Academic Development (LEAD)	4
2	James Fowler High (10-12)	Paced Learning Program (PLP)	2
2	James Fowler High (10-12)	The Class	2
2	Kenneth D Taylor (K-4)	Enhanced Educational Supports (EES)	2
2	North Haven (K-6)	Paced Learning Program (PLP)	2
2	Panorama Hills (K-5)	Enhanced Educational Supports (EES)	3
2	S.P. Burns (7-9)	Paced Learning Program (PLP)	1
2	Sir J. A. Macdonald (7-9)	Adapted Learning Program (ALP)	1
2	Sir J. A. Macdonald (7-9)	Paced Learning Program (PLP)	1
2	Sir John Franklin (5-9)	Communication, Sensory and Social Interaction (CSSI)	2
2	Sir John Franklin (5-9)	Literacy, English & Academic Development (LEAD)	6
2	Sir John Franklin (5-9)	Teaching of Attitude, Social Skills and Communication (TASC)	1
2	William Aberhart High (10-12)	Adapted Learning Program (ALP)	2
2	William Aberhart High (10-12)	Attitude, Community Competence, Elements (of Academic Curriculum), Social Skills (ACCESS)	1
2	William Aberhart High (10-12)	Communication, Sensory and Social Interaction (CSSI)	1
2	William Aberhart High (10-12)	Paced Learning Program (PLP)	1
3	Abbeydale (K-5)	Enhanced Educational Supports (EES)	1
3	Belfast (K-6)	Literacy, English & Academic Development (LEAD) Div. II	2
3	Cappy Smart (K-5)	Enhanced Educational Supports (EES)	3
3	Colonel Macleod (7-9)	Bridges	1
3	Colonel Macleod (7-9)	Literacy, English & Academic Development (LEAD) Div III	2
3	Crescent Heights High (10-12)	Bridges	1
3	Crescent Heights High (10-12)	Literacy, English & Academic Development (LEAD)	3
3	Crescent Heights High (10-12)	Paced Learning Program (PLP)	1
3	Crescent Heights High (10-12)	The Class	2
3	Dr. Gladys M. Egbert (6-9)	Paced Learning Program (PLP)	2
3	Erin Woods (K-5)	Bridges	2
3	Ernest Morrow (6-9)	Bridges	1
3	Ernest Morrow (6-9)	Literacy, English & Academic Development (LEAD)	2
3	Ernest Morrow (6-9)	Paced Learning Program (PLP)	3
3	Forest Lawn High (10-12)	Literacy, English & Academic Development (LEAD)	5
3	Forest Lawn High (10-12)	Paced Learning Program (PLP)	2
3	Forest Lawn High (10-12)	The Class	1
3	Jack James (10-12)	Paced Learning Program (PLP)	1
3	Jack James (10-12)	RISE	1

**CALGARY BOARD OF EDUCATION
SPECIALIZED CLASSES 2023-2024**

Area	School	Program	# of Classes
3	Mount View (K-6)	Literacy, English & Academic Development (LEAD) Div. II	2
3	Niitsitapi Learning Centre (K-2)	Early Development Centre	4
3	North Trail High School (10-12)	Communication, Sensory and Social Interaction (CSSI)	2
3	North Trail High School (10-12)	Literacy, English & Academic Development (LEAD) Div IV	2
3	Nose Creek (5-9)	Communication, Sensory and Social Interaction (CSSI)	1
3	Nose Creek (5-9)	Paced Learning Program (PLP)	2
3	Penbrooke Meadows (K-5)	Literacy, English & Academic Development (LEAD)	3
3	Riverside (K-9)	Attitude, Community Competence, Elements (of Academic Curriculum), Social Skills (ACCESS)	1
3	Roland Michener (K-5)	Bridges	1
3	Roland Michener (K-5)	Paced Learning Program (PLP)	1
3	Rosemont (K-6)	Bridges	1
3	Valley Creek (4-9)	Communication, Sensory and Social Interaction (CSSI)	1
3	Valley Creek (4-9)	Teaching of Attitude, Social Skills and Communication (TASC)	1
3	Valley Creek (4-9)	The Class	1
3	Vista Heights (K-6)	Learning & Literacy	2
3	West Dover (K-5)	Enhanced Educational Supports (EES)	2
4	Annie Gale (7-9)	Learning & Literacy	2
4	Bob Edwards (6-9)	RISE	1
4	Cecil Swanson (K-6)	Bridges	1
4	Cecil Swanson (K-6)	Enhanced Educational Supports (EES)	1
4	Clarence Sansom (7-9)	Adapted Learning Program (ALP)	1
4	Clarence Sansom (7-9)	Attitude, Community Competence, Elements (of Academic Curriculum), Social Skills (ACCESS)	2
4	Dr. Gordon Higgins (7-9)	Paced Learning Program (PLP)	2
4	Falconridge (K-6)	Enhanced Educational Supports (EES)	2
4	Hugh A. Bennett (K-4)	Enhanced Educational Supports (EES)	1
4	Lester B. Pearson High (10-12)	Adapted Learning Program (ALP)	1
4	Lester B. Pearson High (10-12)	Attitude, Community Competence, Elements (of Academic Curriculum), Social Skills (ACCESS)	1
4	Monterey Park (K-6)	Enhanced Educational Supports (EES)	3
4	Nelson Mandela High (10-12)	Paced Learning Program (PLP)	2
4	O.S. Geiger (K-6)	Enhanced Educational Supports (EES)	2
4	O.S. Geiger (K-6)	Paced Learning Program (PLP)	1
4	Peter Lougheed (5-9)	Learning & Literacy	1
4	Pineridge (K-6)	Enhanced Educational Supports (EES)	4
4	Sir Wilfred Laurier (6-9)	Communication, Sensory and Social Interaction (CSSI)	1
4	Ted Harrison (5-9)	Communication, Sensory and Social Interaction (CSSI)	1
4	Ted Harrison (5-9)	Paced Learning Program (PLP)	1
4	Terry Fox (7-9)	Bridges	1
4	Terry Fox (7-9)	Literacy, English & Academic Development (LEAD)	3
4	Terry Fox (7-9)	The Class	1
5	Auburn Bay (K-4)	Enhanced Educational Supports (EES)	2
5	Centennial High (10-12)	Attitude, Community Competence, Elements (of Academic Curriculum), Social Skills (ACCESS)	1
5	Centennial High (10-12)	Communication, Sensory and Social Interaction (CSSI)	1
5	Centennial High (10-12)	Paced Learning Program (PLP)	1
5	Centennial High (10-12)	The Class	1
5	Deer Run (K-6)	Bridges	2
5	Lord Beaverbrook High (10-12)	Adapted Learning Program (ALP)	2
5	Lord Beaverbrook High (10-12)	Paced Learning Program (PLP)	2
5	Lord Beaverbrook High (10-12)	The Class	1
5	McKenzie Highland (4-9)	Learning & Literacy	2
5	McKenzie Lake (K-4)	Enhanced Educational Supports (EES)	2
5	McKenzie Towne (K-4)	Enhanced Educational Supports (EES)	3
5	Midsun (7-9)	Adapted Learning Program (ALP)	1
5	Midsun (7-9)	Attitude, Community Competence, Elements (of Academic Curriculum), Social Skills (ACCESS)	1
5	Midsun (7-9)	Communication, Sensory and Social Interaction (CSSI)	1
5	Midsun (7-9)	Teaching of Attitude, Social Skills and Communication (TASC)	1
5	Mountain Park (5-9)	The Class	1
5	Samuel W. Shaw (5-9)	Paced Learning Program (PLP)	2
5	Wilma Hansen (5-9)	Bridges	1
5	Wilma Hansen (5-9)	Paced Learning Program (PLP)	1
6	AE Cross (7-9)	Paced Learning Program (PLP)	2
6	Alternative High (10-12)	The Class	2
6	Cedarbrae (K-6)	Bridges	1
6	Central Memorial High (10-12)	Bridges	1

**CALGARY BOARD OF EDUCATION
SPECIALIZED CLASSES 2023-2024**

Area	School	Program	# of Classes
6	Central Memorial High (10-12)	Communication, Sensory and Social Interaction (CSSI)	1
6	Central Memorial High (10-12)	Teaching of Attitude, Social Skills and Communication (TASC)	1
6	Ethel M. Johnson (K-6)	Enhanced Educational Supports (EES)	2
6	Ethel M. Johnson (K-6)	Learning & Literacy	1
6	Ethel M. Johnson (K-6)	Paced Learning Program (PLP)	1
6	Evergreen (K-5)	Enhanced Educational Supports (EES)	2
6	Harold Panabaker (7-9)	Adapted Learning Program (ALP)	1
6	Harold Panabaker (7-9)	Learning & Literacy	2
6	Henry Wise Wood (10-12)	Attitude, Community Competence, Elements (of Academic Curriculum), Social Skills (ACCESS)	1
6	Henry Wise Wood (10-12)	Gifted and Talented Education (GATE)	5
6	Henry Wise Wood (10-12)	Literacy, English & Academic Development (LEAD)	2
6	Henry Wise Wood (10-12)	Paced Learning Program (PLP)	1
6	John Ware (7-9)	The Class	1
6	Louis Riel (K-9)	Gifted and Talented Education (GATE II/III)	11
6	Marshall Springs (6-9)	Communication, Sensory and Social Interaction (CSSI)	1
6	Nickle (5-9)	Bridges	1
6	Nickle (5-9)	Learning & Literacy	2
6	Ron Southern (K-6)	Enhanced Educational Supports (EES)	2
6	Sherwood (4-9)	Literacy, English & Academic Development (LEAD) Div III	1
6	Sherwood (4-9)	Literacy, English & Academic Development (LEAD) Div III	1
7	Battalion Park (K-6)	Enhanced Educational Supports (EES)	2
7	Bishop Pinkham (7-9)	Communication, Sensory and Social Interaction (CSSI)	1
7	Dr. Oakley (8-12)	HERA	1
7	Earl Grey (K-6)	Learning & Literacy	1
7	Ernest Manning High (10-12)	Paced Learning Program (PLP)	1
7	Hillhurst (K-6)	Gifted and Talented Education (GATE)	4
7	Jennie Elliott (K-6)	Deaf and Hard of Hearing	4
7	Mount Royal (7-9)	Teaching of Attitude, Social Skills and Communication (TASC)	1
7	Queen Elizabeth High (7-12)	Deaf and Hard of Hearing (III/IV)	5
7	Queen Elizabeth High (7-12)	Gifted and Talented Education (GATE III/IV)	10
7	Queen Elizabeth High (7-12)	The Class	2
7	Simons Valley (K-6)	Enhanced Educational Supports (EES)	1
7	University (K-6)	Enhanced Educational Supports (EES)	1
7	Vincent Massey (7-9)	Learning & Literacy	1
7	Vincent Massey (7-9)	Literacy, English & Academic Development (LEAD)	1
7	Wildwood (K-6)	Enhanced Educational Supports (EES)	2
7	Wildwood (K-6)	Paced Learning Program (PLP)	1

TOTAL CLASSES 283

Enrolment in classes for students with Complex Learning Needs (excludes Unique Settings)

	Pre-K	K	1	2	3	4	5	6	7	8	9	10	11	12	Total
ACCESS								2	21	24	13	17	17	14	108
Centennial High School												3	7	4	14
Clarence Sansom School								1	7	13	3				24
H. D. Cartwright School									6	6	2				14
Henry Wise Wood High School												3	4	2	9
Lester B. Pearson High School												6	2	5	13
MidSun School									4	5	3				12
Riverside School								1	4		5				10
William Aberhart High School												5	4	3	12
ALP (Adapted Learning Program)								1	23	18	21	31	25	29	148
Clarence Sansom School									1	6	4				11
Harold Panabaker School									7		4				11
Lester B. Pearson High School												7	2	6	15
Lord Beaverbrook High School												7	9	9	25
MidSun School								1	3	4	6				14
Robert Thirsk High School												6	5	4	15
Sir John A. Macdonald School									7	4	3				14
Thomas B. Riley School									5	4	4				13
William Aberhart High School												11	9	10	30
Bridges				12	25	17	17	13	15	23	18	9	7	8	164
Belvedere Parkway School				2	2		1	4							9
Cambrian Heights School				1	3	2	1	2							9
Cecil Swanson School				2	2	3	2								9
Cedarbrae School				2	2	1	3	1							9
Central Memorial High School												4	5	1	10
Colonel Irvine School									6	2	3				11
Colonel Macleod School								1	3	4	3				11
Crescent Heights High School												5	2	7	14
Deer Run School				1	4	2	6	2							15
Erin Woods School				1	6	3	4								14
Ernest Morrow School								2	1	4	1				8
Nickle School									2	4	5				11
Ranchlands School					1	1		1							3
Roland Michener School				3	2	3									8
Rosemont School					3	2									5
Terry Fox School										5	4				9
Wilma Hansen School									3	4	2				9

Enrolment in classes for students with Complex Learning Needs (excludes Unique Settings)

	Pre-K	K	1	2	3	4	5	6	7	8	9	10	11	12	Total
GATE						40	46	34	58	91	85	42	54	51	501
Henry Wise Wood High School												22	41	34	97
Hillhurst School						26	26	19							71
Louis Riel School						14	20	15	20	55	42				166
Queen Elizabeth High School									38	36	43	20	13	17	167
HERA											1	6	1		8
Dr. Oakley											1	6	1		8
L&L						18	26	59	67	76	50				296
Annie Gale School									13	12	8				33
Arbour Lake School									11	13	7				31
Captain John Palliser School						1	5	11							17
Earl Grey School						4	2	10							16
Ethel M. Johnson School						3	8	4							15
Georges P. Vanier School									7	9	12				28
H. D. Cartwright School									6	9	3				18
Harold Panabaker School									3	10	7				20
Huntington Hills School						1	3	7							11
McKenzie Highlands School						5	4	11	5						25
Nickle School									12	15	5				32
Peter Lougheed School									5	2	6				13
Vincent Massey School									5	6	2				13
Vista Heights School						4	4	16							24
LEAD						18	39	59	46	52	50	60	54	68	446
Belfast School						11	11	7							29
Colonel Macleod School								1	5	7	7				20
Crescent Heights High School												14	13	12	39
Ernest Morrow School								1	8	9	7				25
Forest Lawn High School												22	23	17	62
Henry Wise Wood High School												4	2	9	15
James Fowler High School												13	14	29	56
Mount View School						3	7	7							17
North Trail High School												7	2	1	10
Penbrooke Meadows School						4	11	21							36
Sherwood School								1	1	1	3				6
Sir John Franklin School							10	21	15	16	12				74
Terry Fox School									14	14	17				45
Vincent Massey School									3	5	4				12

Enrolment in classes for students with Complex Learning Needs (excludes Unique Settings)

	Pre-K	K	1	2	3	4	5	6	7	8	9	10	11	12	Total	
PLP						18	44	61	81	83	85	79	59	65	575	
A. E. Cross School									13	7	9				29	
Bowness High School												6	2	4	12	
Centennial High School												8	3	5	16	
Crescent Heights High School												4			4	
Dr. Gladys McKelvie Egbert School								6	7	9	10				32	
Dr. Gordon Higgins School									11	9	9				29	
Ernest Manning High School												5	4	4	13	
Ernest Morrow School								6	12	19	8				45	
Ethel M. Johnson School						2	4	7							13	
Forest Lawn High School												12	9	9	30	
Henry Wise Wood High School													4	5	9	
Jack James High School												6	7	3	16	
James Fowler High School												8	7	16	31	
Lord Beaverbrook High School												8	6	6	20	
Nelson Mandela High School												13	10	9	32	
North Haven School						4	9	13							26	
Nose Creek School									6	13	11				30	
O. S. Geiger School						3	6	5							14	
Ranchlands School						3	6	4							13	
Robert Thirsk High School												8	3	3	14	
Roland Michener School						1	13								14	
Samuel W. Shaw School							1	4	9	4	12				30	
Senator Patrick Burns School									4	5	6				15	
Sir John A. Macdonald School									4	5	6				15	
Ted Harrison School								4	3	5	2				14	
Terrace Road School						1	1	6							8	
Thomas B. Riley School									7	5	4				16	
Wildwood School						4	4	6							14	
William Aberhart High School												1	4	1	6	
Wilma Hansen School									5	2	8				15	
RISE									3	0	6	5	6	5	25	
Bob Edwards School									3		6				9	
Jack James High School												5	6	5	16	
TASC									1	6	12	6	4	2	5	36
Central Memorial High School												2		4	6	
MidSun School										5	1				6	
Mount Royal School									2	1	2				5	
Robert Thirsk High School												2	2	1	5	
Sir John Franklin School								1	1	1	2				5	
Valley Creek School									1	3					4	
William D. Pratt School									2	2	1				5	

Enrolment in classes for students with Complex Learning Needs (excludes Unique Settings)

	Pre-K	K	1	2	3	4	5	6	7	8	9	10	11	12	Total
The Class	2	5	2	17	26	36	66	42	35	231					
Alternative High School												16	12	3	31
Arbour Lake School									6	9					15
Beddington Heights School						2	5	2							9
Centennial High School												8	5	2	15
Crescent Heights High School												12	6	10	28
Forest Lawn High School												7	4	3	14
James Fowler High School												8	8	7	23
John Ware School									2	2	9				13
Lord Beaverbrook High School												6	6	5	17
Mountain Park School									2	4	4				10
Queen Elizabeth High School									8	7	7				22
Sir Winston Churchill High School												9	1	5	15
Terry Fox School									3	3	5				11
Valley Creek School									2	4	2				8
Grand Total	71	97	102	195	243	301	371	427	392	343	287	298	3127		

| appendix | Specialized Classes Definitions

Specialized Classes

ACCESS - Adaptive Functioning, Communication, Community Engagement, Social Skills

The ACCESS class supports students with moderate to severe learning and adaptive behaviour needs in grades 7-12. Students receive personalized programming in a functional academics, social-communication skills, daily living skills, safety and leisure skills and independence skills. Opportunities for peer mentorship and meaningful inclusion in the school community are provided according to individual student interests and abilities. Learner supports and accommodations may include the use of assistive technology, augmentative communication systems, work-systems and sensory activities. Class sizes range from 12-14 students and students are supported by a teacher and a multi-disciplinary team members including educational assistants, lunch room assistant, behaviour support workers, specialists, strategists, occupational therapist and physical therapist.

Learner Profile:

- Students in grades 7-12 who have been diagnosed with a moderate cognitive disability (FSIQ 30-50 +/- 5) and low to extremely low adaptive functioning delays.
- Students may have co-occurring diagnosis including a medical diagnosis.

ALP - Adapted Learning Program

The ALP class supports students with moderate learning and adaptive behaviour needs in grades 7-12. Students receive personalized programming and a functional curriculum to support the development of literacy, numeracy, social-communication, independence, daily living, leisure, vocational and volunteering skills. Opportunities for peer mentorship and inclusion in the school community are provided and may include complementary courses (options), clubs, sports, and special events. Learner supports and accommodations may include the use of assistive technology, augmentative communication systems, work-systems and sensory activities. Class sizes range from 12-14 students and students are supported by a teacher and a multi-disciplinary team including educational assistants, lunch room supervisor, behaviour support workers, specialists, strategists, occupational therapist and physical therapist.

Learner Profile:

- Students in grades 7-12 who have moderate cognitive disabilities (FSIQ 45-65 +/- 5) and low to extremely low adaptive functioning.
- Students may have co-occurring diagnosis including a medical diagnosis.

CSSI - Communication, Sensory, Social Interaction

The CSSI class supports students with multiple and complex learning, behaviour, and communication needs in grades 7-12. Students receive personalized programming and functional curriculum related to the development of functional academics, social-communication, regulation, independence, daily living, leisure, pre-vocational and volunteering skills. Opportunities for peer mentorship and meaningful inclusion in the school community are provided and programmed according to individual student interests and abilities. Learner supports and accommodations may include the use of assistive technology, augmentative communication systems, work-systems and sensory activities. Class sizes range from 6-8 students and students are supported by a teacher and a multi-disciplinary team including educational assistants, behaviour support workers, specialists, strategists, occupational therapist and physical therapist.

Learner Profile:

- Students in grades 1-12 who have a diagnosis of Autism Spectrum Disorder (ASD).
- Students have been identified with moderate to severe cognitive disabilities, communication delays and extremely low adaptive functioning.
- Students require significant specialized supports in order to experience learner success.
- Students may have co-occurring diagnosis including a medical diagnosis.

EES - Enhanced Educational Supports

The Enhanced Educational Supports (EES) class supports students in grades 1-6 with moderate to severe developmental delays. The EES class focuses on building foundational learner skills in functional academics, communication, daily living and citizenship. Programming to promote social-emotional and physical wellbeing are important features of the EES class. Class sizes range from 8-9 students and are supported by a teacher and various multi-disciplinary team members including educational assistants, lunch room assistant, behaviour support workers, specialists, strategists, occupational therapist and physical therapist.

Learner Profile:

- Students in grades 1-6 who have been diagnosed with a moderate cognitive disability (FSIQ 30-50 +/- 5) and low to extremely low adaptive functioning.
- Students may have co-occurring diagnosis including a medical diagnosis.

PLP - Paced Learning Program

The Paced Learning Program (PLP) supports students with mild to moderate learning and adaptive behaviour needs in grades 4-12. Students receive personalized and functional curriculum related to the development of functional academics, social-communication, independence, daily living, safety, citizenship, leisure, vocational and volunteering skills. Opportunities for peer mentorship and meaningful inclusion in the school community are provided and programmed according to individual student interests and abilities. Learner supports and accommodations may include the use of assistive technology, augmentative communication systems, work-systems and sensory activities. Class size range from: 12-14 students in elementary; 14-16 students in jr. high; and 16-18 students in high school. Students are supported by a teacher and a multi-disciplinary team including educational assistants, behaviour support workers, specialists, strategists, occupational therapist and physical therapist.

Learner Profile:

- Students in grades 4-12 diagnosed with a mild or moderate cognitive disability (FSIQ 50-70 +/- 5) and below average to low adaptive functioning.
- Students may have co-occurring diagnosis including a medical diagnosis.

TASC - Teaching of Adaptive, Social and Communication Skills

The TASC class is for students in grades 7-12 who require significant learning, adaptive behaviour, and physical support. Students receive personalized and functional curriculum related to social-communication, play and leisure, daily living, safety, regulation, independence, leisure and pre-vocational skills. Opportunities for peer mentorship and meaningful inclusion in the school community are provided and programmed according to individual student interests and abilities. Learner supports and accommodations may include the use of assistive technology, augmentative communication systems, work-systems and sensory activities. Class sizes range from 6-8 students and students are supported by a teacher and a multi-disciplinary team including educational assistants, lunch room assistant, behaviour support workers, specialists, strategists, occupational therapist and physical therapist.

Learner Profile:

- Students in grades 1-12 who have been diagnosed with extremely low cognitive, developmental and adaptive delays.
- Students may have been diagnosed with co-occurring chronic medical conditions.
- Students require significant specialized supports in order to experience learner success.

Deaf and Hard of Hearing (DHH)

The DHH class offers support for students in grades 1-12 whose hearing loss significantly impacts their language development and learning. DHH classes offer unique educational environments, including direct English language instruction, communicative supports and services. Curriculum modifications, instructional accommodations, integration opportunities and learning technologies are personalized based on the strengths and needs of each student.

Programming options for DHH students include communication and instruction through Aural/Oral and/or Bilingual approaches:

Aural/Oral Approach

Programming emphasizes the use of hearing technology, residual hearing, speech, speech-reading, use of written English, and visual supports. The primary goal is to develop skills in listening and spoken language, reading and writing, and self-advocacy. Aural/Oral programming is recommended for families who have expressed a preference for their children to learn through aural methods of input (listening to English) and oral expression (speaking).

Bi-lingual - ASL/English Approach

Programming emphasizes the use of American Sign Language (ASL) for language learning. The primary goal is to optimize students' communication abilities in ASL in conjunction with English literacy and numeracy skills. Students benefit from direct support in developing expressive/receptive language skills and use these skills to develop English literacy skills. Students may utilize personal technology and FM/DM systems. ASL/English programming is recommended for families who have expressed a preference for their children to learn through direct instruction in American Sign Language, or for students who require sign language to communicate.

If appropriate, families are encouraged to access programming in both modes of communication.

The Deaf and Hard of Hearing specialized classes are located at [Jennie Elliott School](#) for grades 1 through 6, and [Queen Elizabeth Junior/Senior High School](#) for grades 7 through 12.

Eligibility and identification for DHH supports and services must be supported by documentation and diagnosis from a clinical or educational audiologist. A student's hearing profile as illustrated by an audiogram supports Special Education Coding for the following:

- Code 55: a mild hearing loss of 26 to 40 decibels (dB), or a moderate hearing loss of 41 to 70 dB unaided in the better ear over the normal speech range of 500 to 4000 hertz (Hz).
- Code 45: a hearing loss of 71 dB or more unaided in the better ear over the normal speech range of (500 to 4000Hz) (Alberta Education, 2020).

Students with a minimal or unilateral hearing loss (one ear) do not meet Alberta Education's coding criteria for 55 (Hearing Disability) or 45 (Deafness), but may still be eligible to receive specialized DHH supports and services when the hearing loss interferes significantly with the ability to learn.

Early Development Centre (EDC)

The Early Development Centres (EDC) supports pre-school children who have been identified with moderate to severe delays/disabilities. These may be delays in speech and language, social, emotional, or behavioral development, and/or physical/medical development. Through play in a language-rich environment, children learn skills to prepare them for kindergarten and beyond. Early intervention support is partially funded through Alberta Education's Program Unit Funding (PUF).

A limited number of spaces are offered for play partners who do not have identified delays or disabilities for a monthly fee.

In EDC each child receives a continuum of supports and services based on individual needs and strengths. Class sizes typically fall between 10 and 12 children.

Learner Profile:

- Moderate to severe disabilities as defined by Alberta Education Guidelines.
- At least 3 years 8 months on September 1 of the school year they are attending in but less than 4 years 8 months on September 1.

English as an Additional Language (EAL)

Students with limited formal schooling and refugee learners may access a specialized program called Literacy, English and Academic Development (LEAD). The LEAD program provides intensive supports and services in a sheltered, trauma-sensitive setting. Instructional programming focuses on English language development, basic literacy, numeracy and cultural and social adjustment. The Program of Studies is modified for students, based on individual needs. General Learner Outcomes (language skills, mathematics, social/emotional development, school acculturation, etc.) for LEAD focus on the development of communicative competence and guide instruction and assessment. A Student Growth Plan is used to document student progress.

Students remain in LEAD for a maximum of twenty months after which they are assessed for their readiness to transition to ESL programming in their community school. Students are expected to progress three to five grade levels in that time frame. LEAD is offered as a class of choice to students with the target profile, and entry can occur at any time during the school year. LEAD is available to students who are age appropriate for Grades 4 to 12. Younger students with this profile attend their community school. LEAD classes typically have up to 15 multi-aged students with one full time teacher and one EAL Assistant.

Learner Profile:

- Newcomer immigrant and refugee EAL learners who have had little or no opportunity to attend school due to war, civil unrest, lack of educational infrastructure or persecution
- Students recognized as having additional complexities related to trauma, grief and loss as a result of their migration and resettlement experiences
- Most often have refugee status, government assisted or privately sponsored
- Little or no English
- Limited literacy and numeracy skills in first language
- History of interrupted or limited access to formal education
- No indication of other presenting learning concerns at the time of registration.

Gifted and Talented (GATE)

Alberta Education describes giftedness as exceptional performance and/or potential in learning rate, depth of knowledge, reasoning and problem-solving abilities when compared with others of their age, experience and environment. Giftedness presents across a wide range of abilities: general intellectual, specific academic, creative thinking, social, musical, artistic, kinesthetic. (Alberta Education, 2004).

Learner Profile:

In the CBE, to be identified with the special education designation Gifted and Talented, the following criteria must be met:

- The student is identified as intellectually gifted with Very Superior/Extremely High cognitive ability (Full Scale IQ of 130+) as determined by a registered psychologist who administers an individual standardized psychological assessment.
- Adjustments in programming are required to address the needs giftedness presents. Social and emotional characteristics, typical of many gifted learners, impact these needs.

Learning & Literacy (L&L)

The L&L class is for students identified with learning disabilities in grades 4-6. The goal of an L&L class is to assist each student in gaining skills, knowledge, and competencies to support the attainment of academic, social, and emotional potential. Teaching in the L&L class is done in a blended classroom model with an emphasis on developing reading and writing skills within classroom instruction. The model of service delivery allows for team teaching using Universal Design for Learning as the basis of curriculum planning and delivery. Inclusive learning technologies, curriculum design, accommodations, and all key components for students with learning disabilities are implemented based on the individual needs of each student.

Learner Profile:

- Identified learning disability/learning disorder according to Alberta Education criteria.
- Learning needs are primary (other needs such as emotional or behavioural disabilities or mental health concerns are not presenting as the primary need).
- Highly complex learning disabilities – often these students have complex learning profiles e.g. significant language based learning disabilities (weaker Verbal Comprehension scores) or low average or borderline overall abilities along with significant academic weaknesses.
- Academic achievement is significantly delayed in relation to expected achievement levels often by approximately 2-3 grade levels.

Mental Health and Wellness

Bridges

The Bridges class supports students in grades 1-12 who present with severe externalizing behaviours, which significantly impacts their learning and social success in a traditional education settings. The focus of programming is to build academic and wellbeing success by providing a continuum of supports and services. Specialized instruction emphasizes safety, building relationships, problem solving and mental health literacy. Curriculum modifications and instructional accommodations are implemented based on the individual strengths and needs of each student.

Learner Profile:

- There is significant documented evidence that the student is not achieving to his/her potential despite intensive individualized supports (as identified in the IPP and Student Support Plan) in place in their school, home, and community
- The student is identified as meeting the criteria for a severe social emotional disability (code 42) or a severe medical disability (code 44)
- Externalizing mental health responses which pose a consistent barrier to learning are the primary presenting concern at school
- Student and parent(s)/guardian(s) are supportive of the placement and willing to participate in the supports available through Bridges.

The Class

The Class supports students in grades 1-12 who present with severe internalizing behaviours, which significantly impact their learning and social success in a traditional education setting. The focus of programming is to build academic and wellbeing success by providing a continuum of supports and services. Specialized instruction emphasizes safety, building relationships, problem solving and mental health literacy. Curriculum modifications and instructional accommodations are implemented based on the individual strengths and needs of each student.

Learner Profile:

- There is significant documented evidence that the student is not achieving to his/her potential despite intensive individualized supports in place in their school, home, and community
- Student is identified with a mental health diagnosis, and meets the criteria for a severe social emotional disability (code 42) or a severe medical disability (code 44)
- Internalizing mental health responses which pose a consistent barrier to learning are the primary presenting concern at school
- Student is currently involved in therapeutic treatment outside of The Class which includes a mental health professional acting as the case manager and ongoing involvement in individual, group and/or family therapy
- Student is able to usually attend school, engage in personalized academic programming, and attend some academic classes within the school setting independently or with support (may require a short period of transition to do so)
- Student and parent(s)/guardian(s) are supportive of the placement and willing to participate in the supports available through The Class.

RISE

The RISE class is offered in collaboration with Alberta Health Services (AHS) and Wood's Homes (Wood's). The RISE class is for students in grades 7-12 whose learning and ability to be a part of a school community is significantly impacted by internalizing mental health disorders. Students may or may not have an identified diagnosis and school attendance is a concern.

Learner Profile:

- There is significant documented evidence that the student is not achieving to his/her potential despite intensive supports in place in their school, home, and community **AND**
- Displays significant symptoms of mental illness but due to many reasons (transiency, parental mental illness, homelessness, etc.) is not connected with Mental Health Practitioners and may not yet be diagnosed **OR**
- Housebound or severe attendance issues: unable due to diagnosed mental illness to consistently attend The Class or a regular classroom setting **OR**
- May be waiting for a mental health in-patient or day treatment program and unable to attend The Class or a regular classroom setting due to his/her diagnosed mental illness **OR**
- May be leaving a mental health in-patient or day treatment program but still not ready to attend The Class or a regular classroom setting.
- Internalizing mental health responses which pose a consistent barrier to learning are the primary presenting concern.
- Student and parent(s)/guardian(s) are supportive of the placement and willing to participate in the supports available through the RISE Team to re-engage at school.

Vision

Alberta Education describes a student with a visual impairment as either having a mild-moderate visual disability or a severe visual disability, this is formally identified by means of an ophthalmology report and/or functional vision assessment by a qualified specialist in the field of vision as either (Alberta Education, 2016).

Learner Profile:

Mild-Moderate Visual Disability (Code 56):

- Has vision so limited that it interferes with the ability to learn, and requires modification of the learning environment.
- Is designated as having limited vision with a visual acuity of less than 20/70 (6/21 metric) in the better eye after correction, and/or a reduced field of vision.

Severe Visual Disability (Code 46):

- Has corrected vision so limited that it is inadequate for most or all instructional situations, and information must be presented through other means (tactile diagrams, braille instruction)
- Has a visual acuity ranging from less than 6/60 (20/200) in the better eye after correction, to having no usable vision or a field of vision reduced to an angle of 20 degrees.

For those students who may be difficult to assess (e.g., cortical blindness – developmentally delayed), a functional visual assessment by a qualified specialist in the field of vision or a medical professional may be sufficient to support eligibility.

2023 - 2024 SCHOOL ENROLMENT REPORT - School Capacity and Utilization

Attachment IX

- i. The provincial utilization rate of each school building includes lease exemptions as of September 1 of the current year
- ii. $\text{Weighted Enrolment} = (\text{Kindergarten minus Kindergarten Special Education Severe}) \div 2 + (\text{Kindergarten Special Education Severe multiplied by } 1.5) + (\text{GR } 1\text{-}12 \text{ enrolment minus GR } 1\text{-}12 \text{ Special Education Severe}) + (\text{GR } 1\text{-}12 \text{ Special Education Severe multiplied by } 3)$
- iii. $\text{Utilization Rate} = \text{Weighted Enrolment} \div \text{Provincial Capacity}$
- iv. *Capacity values are given as calculated under the Instructional Area Method, currently prescribed by the Province of Alberta

SCHOOL	2022 WEIGHTED ENROLMENT	2022 PROVINCIAL % UTILIZ.	2023 WEIGHTED ENROLMENT	2023 PROVINCIAL CAPACITY	# Of Modulars/ Portables	2023 PROVINCIAL % UTILIZ.	Provincial Utilization Difference (2022 to 2023)
AREA 1							
ARBOUR LAKE SCHOOL	855	96%	824	892	8	92%	-4%
BELVEDERE PARKWAY SCHOOL	480	88%	480	543	0	88%	0%
BOWCROFT SCHOOL	317	69%	359	473	0	76%	7%
BOWNESS HIGH SCHOOL	1376	84%	1544	1538	0	100%	17%
BRENTWOOD SCHOOL	697	90%	729	778	0	94%	4%
CAPTAIN JOHN PALLISER SCHOOL	525	83%	597	635	0	94%	11%
CHRISTINE MEIKLE SCHOOL	384	84%	367	470	0	78%	-6%
CITADEL PARK SCHOOL	413	86%	494	481	8	103%	17%
DR. E. W. COFFIN SCHOOL	176	81%	165	218	1	76%	-5%
EDGEMONT SCHOOL	615	92%	636	666	14	96%	3%
ERIC HARVIE SCHOOL	336	56%	329	602	6	55%	-1%
F. E. OSBORNE SCHOOL	821	114%	722	719	0	100%	-14%
H. D. CARTWRIGHT SCHOOL	561	96%	565	593	2	95%	-1%
HAWKWOOD SCHOOL	638	98%	706	653	0	108%	10%
MARION CARSON SCHOOL	487	92%	501	521	2	96%	4%
RANCHLANDS SCHOOL	365	74%	399	496	8	80%	7%
ROBERT THIRSK HIGH SCHOOL	1575	102%	1704	1497	0	114%	12%
ROYAL OAK SCHOOL	559	103%	563	545	10	103%	1%
SCENIC ACRES SCHOOL	131	71%	176	183	7	96%	25%
SILVER SPRINGS SCHOOL	267	93%	256	286	1	90%	-4%
SIMON FRASER SCHOOL	745	98%	714	760	6	94%	-4%
SIR WINSTON CHURCHILL HIGH SCHOOL	2525	121%	2495	2014	6	124%	3%
TERRACE ROAD SCHOOL	182	59%	189	308	0	61%	2%
THE HAMPTONS SCHOOL	183	76%	181	240	4	75%	-1%
THOMAS B. RILEY SCHOOL	620	100%	594	687	0	87%	-13%
TOM BAINES SCHOOL	880	114%	860	770	1	112%	-3%
TUSCANY SCHOOL	525	79%	539	662	14	81%	2%
TWELVE MILE COULEE SCHOOL	870	97%	857	893	16	96%	-1%
WEST DALHOUSIE SCHOOL	276	85%	324	325	6	100%	15%
WILLIAM D. PRATT SCHOOL	845	89%	938	948	8	99%	10%
AREA 1 - TOTAL	19,224	94%	19,803	20,396	128	97%	3%

2023 - 2024 SCHOOL ENROLMENT REPORT - School Capacity and Utilization

Attachment IX

- i. The provincial utilization rate of each school building includes lease exemptions as of September 1 of the current year
- ii. $\text{Weighted Enrolment} = (\text{Kindergarten minus Kindergarten Special Education Severe}) \div 2 + (\text{Kindergarten Special Education Severe multiplied by } 1.5) + (\text{GR } 1\text{-}12 \text{ enrolment minus GR } 1\text{-}12 \text{ Special Education Severe}) + (\text{GR } 1\text{-}12 \text{ Special Education Severe multiplied by } 3)$
- iii. $\text{Utilization Rate} = \text{Weighted Enrolment} \div \text{Provincial Capacity}$
- iv. *Capacity values are given as calculated under the Instructional Area Method, currently prescribed by the Province of Alberta

SCHOOL	2022 WEIGHTED ENROLMENT	2022 PROVINCIAL % UTILIZ.	2023 WEIGHTED ENROLMENT	2023 PROVINCIAL CAPACITY	# Of Modulars/ Portables	2023 PROVINCIAL % UTILIZ.	Provincial Utilization Difference (2022 to 2023)
AREA 2							
ALEX MUNRO SCHOOL	293	65%	297	451	0	66%	1%
BALMORAL SCHOOL	568	106%	579	538	0	108%	2%
BANFF TRAIL SCHOOL	336	74%	342	418	0	82%	8%
BEDDINGTON HEIGHTS SCHOOL	389	77%	443	493	8	90%	13%
BRANTON SCHOOL	623	82%	647	761	6	85%	3%
BUCHANAN SCHOOL	207	85%	215	243	0	89%	3%
BUFFALO RUBBING STONE SCHOOL	637	106%	648	601	6	108%	2%
CAMBRIAN HEIGHTS SCHOOL	472	116%	414	487	0	85%	-31%
CAPITOL HILL SCHOOL	330	91%	355	362	0	98%	7%
CAPTAIN NICHOLA GODDARD SCHOOL	929	104%	988	897	16	110%	7%
CATHERINE NICHOLS GUNN SCHOOL	266	58%	312	458	0	68%	10%
CHILDREN'S VILLAGE SCHOOL	209	53%	215	393	0	55%	2%
COLLINGWOOD SCHOOL	438	78%	456	562	0	81%	3%
COLONEL IRVINE SCHOOL	810	103%	848	784	0	108%	5%
COLONEL SANDERS SCHOOL	368	101%	373	363	0	103%	1%
DALHOUSIE SCHOOL	440	88%	449	471	0	95%	7%
DR. J. K. MULLOY SCHOOL	484	98%	472	496	0	95%	-2%
GEORGES P. VANIER SCHOOL	515	78%	589	658	0	90%	11%
HIGHWOOD SCHOOL	311	91%	314	341	0	92%	1%
HUNTINGTON HILLS SCHOOL	240	69%	248	346	0	72%	3%
JAMES FOWLER HIGH SCHOOL	1550	84%	1682	1540	0	109%	25%
JOHN G. DIEFENBAKER HIGH SCHOOL	1764	117%	1506	1405	4	107%	-10%
KENNETH D. TAYLOR SCHOOL	606	103%	654	588	12	111%	8%
KING GEORGE SCHOOL	576	92%	608	607	0	100%	9%
NORTH HAVEN SCHOOL	152	34%	246	411	0	60%	26%
PANORAMA HILLS SCHOOL	589	99%	571	597	10	96%	-3%
SENATOR PATRICK BURNS SCHOOL	822	95%	807	869	0	93%	-2%
SIR JOHN A. MACDONALD SCHOOL	821	100%	878	822	4	107%	7%
SIR JOHN FRANKLIN SCHOOL	452	80%	457	566	0	81%	1%
THORNCLIFFE SCHOOL	268	116%	254	231	0	110%	-6%
VARSITY ACRES SCHOOL	515	82%	556	620	3	90%	8%
W. O. MITCHELL SCHOOL	326	76%	324	429	8	76%	-1%
WILLIAM ABERHART HIGH SCHOOL	1385	77%	1435	1679	4	86%	9%
AREA 2 - TOTAL	18,689	89%	19,177	20,487	81	94%	5%

2023 - 2024 SCHOOL ENROLMENT REPORT - School Capacity and Utilization

Attachment IX

- i. The provincial utilization rate of each school building includes lease exemptions as of September 1 of the current year
- ii. $\text{Weighted Enrolment} = (\text{Kindergarten minus Kindergarten Special Education Severe}) \div 2 + (\text{Kindergarten Special Education Severe multiplied by } 1.5) + (\text{GR } 1\text{-}12 \text{ enrolment minus GR } 1\text{-}12 \text{ Special Education Severe}) + (\text{GR } 1\text{-}12 \text{ Special Education Severe multiplied by } 3)$
- iii. $\text{Utilization Rate} = \text{Weighted Enrolment} \div \text{Provincial Capacity}$
- iv. *Capacity values are given as calculated under the Instructional Area Method, currently prescribed by the Province of Alberta

SCHOOL	2022 WEIGHTED ENROLMENT	2022 PROVINCIAL % UTILIZ.	2023 WEIGHTED ENROLMENT	2023 PROVINCIAL CAPACITY	# Of Modulars/ Portables	2023 PROVINCIAL % UTILIZ.	Provincial Utilization Difference (2022 to 2023)
AREA 3							
ABBEYDALE SCHOOL	256	64%	321	401	6	80%	16%
BELFAST SCHOOL	163	63%	207	257	1	80%	17%
CAPPY SMART SCHOOL	246	66%	264	373	4	71%	5%
COLONEL MACLEOD SCHOOL	624	92%	674	676	4	100%	7%
COVENTRY HILLS SCHOOL	623	98%	634	638	13	99%	2%
CRESCENT HEIGHTS HIGH SCHOOL	2203	98%	1924	2143	0	90%	-8%
DR. GLADYS MCKELVIE EGBERT SCHOOL	533	100%	523	534	4	98%	-2%
ERIN WOODS SCHOOL	341	71%	338	482	8	70%	-1%
ERNEST MORROW SCHOOL	746	80%	752	929	0	81%	1%
FOREST LAWN HIGH SCHOOL	1528	88%	1657	1800	0	92%	4%
G. W. SKENE SCHOOL	192	68%	194	284	0	68%	1%
HIDDEN VALLEY SCHOOL	398	76%	409	523	10	78%	2%
IAN BAZALGETTE SCHOOL	697	98%	742	712	3	104%	6%
JACK JAMES HIGH SCHOOL	729	85%	682	829	0	82%	-3%
JAMES SHORT MEMORIAL SCHOOL	188	40%	152	471	1	32%	-8%
KEELER SCHOOL	529	87%	539	609	0	89%	2%
MOUNT VIEW SCHOOL	205	95%	216	215	0	101%	5%
NORTH TRAIL HIGH SCHOOL			1411	1891	0	75%	75%
NORTHERN LIGHTS SCHOOL	392	70%	573	561	0	102%	32%
NOSE CREEK SCHOOL	829	91%	939	914	16	103%	12%
NIITSITAPI LEARNING CENTRE	179	53%	169	336	0	50%	-3%
PATRICK AIRLIE SCHOOL	216	86%	220	252	0	87%	1%
PENBROOKE MEADOWS SCHOOL	248	66%	229	377	0	61%	-5%
RADISSON PARK SCHOOL	317	82%	352	388	2	91%	9%
RIVERSIDE SCHOOL	657	103%	654	640	0	102%	-1%
ROLAND MICHENER SCHOOL	183	69%	194	263	0	74%	4%
ROSEDALE SCHOOL	274	106%	283	259	2	109%	4%
ROSEMONT SCHOOL	233	96%	247	235	0	105%	9%
STANLEY JONES SCHOOL	546	99%	526	554	0	95%	-4%
SUNNYSIDE SCHOOL	130	57%	170	228	0	74%	17%
VALLEY CREEK SCHOOL	791	91%	829	870	12	95%	4%
VALLEY VIEW SCHOOL	472	77%	482	612	0	79%	2%
VISTA HEIGHTS SCHOOL	172	77%	178	224	0	80%	3%
WEST DOVER SCHOOL	210	47%	225	447	0	50%	3%
AREA 3 - TOTAL	16,045	84%	17,903	20,927	86	86%	2%

2023 - 2024 SCHOOL ENROLMENT REPORT - School Capacity and Utilization

Attachment IX

- i. The provincial utilization rate of each school building includes lease exemptions as of September 1 of the current year
- ii. Weighted Enrolment = (Kindergarten minus Kindergarten Special Education Severe) divided by 2) + (Kindergarten Special Education Severe multiplied by 1.5) + (GR 1-12 enrolment minus GR1-12 Special Education Severe) + (GR1-12 Special Education Severe multiplied by 3)
- iii. Utilization Rate = Weighted Enrolment divided by Provincial Capacity
- iv. *Capacity values are given as calculated under the Instructional Area Method, currently prescribed by the Province of Alberta

SCHOOL	2022 WEIGHTED ENROLMENT	2022 PROVINCIAL % UTILIZ.	2023 WEIGHTED ENROLMENT	2023 PROVINCIAL CAPACITY	# Of Modulars/ Portables	2023 PROVINCIAL % UTILIZ.	Provincial Utilization Difference (2022 to 2023)
AREA 4							
ANNIE FOOTE SCHOOL	280	56%	469	499	9	94%	38%
ANNIE GALE SCHOOL	613	96%	619	640	8	97%	1%
BOB EDWARDS SCHOOL	518	85%	528	610	0	87%	2%
CECIL SWANSON SCHOOL	395	87%	400	453	6	88%	1%
CHIEF JUSTICE MILVAIN SCHOOL	504	96%	531	525	10	101%	5%
CHRIS AKKERMAN SCHOOL	579	107%	578	541	6	107%	0%
CLARENCE SANSOM SCHOOL	636	81%	757	788	8	96%	15%
COLONEL J. FRED SCOTT SCHOOL	505	106%	514	475	8	108%	2%
CROSSING PARK SCHOOL	1181	123%	1137	963	15	118%	-5%
DOUGLAS HARKNESS SCHOOL	330	99%	330	335	2	99%	0%
DR. GORDON HIGGINS SCHOOL	636	91%	744	696	8	107%	16%
FALCONRIDGE SCHOOL	480	83%	544	576	12	94%	11%
GRANT MACEWAN SCHOOL	664	116%	659	571	12	115%	-1%
GUY WEADICK SCHOOL	328	76%	409	430	6	95%	19%
HUGH A. BENNETT SCHOOL	582	101%	619	576	0	107%	6%
LESTER B. PEARSON HIGH SCHOOL	1659	95%	1757	1567	0	112%	17%
LOUISE DEAN SCHOOL	76	35%	41	212	0	19%	-16%
MANMEET SINGH BHULLAR SCHOOL	505	95%	524	533	6	98%	4%
MARLBOROUGH SCHOOL	245	72%	290	341	2	85%	13%
MAYLAND HEIGHTS SCHOOL	418	79%	431	529	0	82%	3%
MONTEREY PARK SCHOOL	535	81%	564	657	17	86%	4%
NELSON MANDELA HIGH SCHOOL	1955	109%	1956	1626	0	120%	11%
O. S. GEIGER SCHOOL	419	82%	509	511	9	100%	18%
PETER LOUGHEED SCHOOL	1012	106%	1002	957	8	105%	-1%
PINERIDGE SCHOOL	361	79%	404	457	6	88%	9%
PRAIRIE SKY SCHOOL	715	88%	924	813	0	114%	26%
RUNDLE SCHOOL	415	77%	481	536	10	90%	12%
SADDLE RIDGE SCHOOL	550	94%	620	587	12	106%	12%
SIR WILFRID LAURIER SCHOOL	501	95%	509	528	0	96%	2%
TARADALE SCHOOL	693	108%	671	643	10	104%	-3%
TED HARRISON SCHOOL	902	102%	966	888	16	109%	7%
TERRY FOX SCHOOL	605	79%	697	766	0	91%	12%
AREA 4 - TOTAL	19,793	94%	21,180	20,829	206	102%	8%

2023 - 2024 SCHOOL ENROLMENT REPORT - School Capacity and Utilization

Attachment IX

- i. The provincial utilization rate of each school building includes lease exemptions as of September 1 of the current year
- ii. $\text{Weighted Enrolment} = (\text{Kindergarten minus Kindergarten Special Education Severe}) \div 2 + (\text{Kindergarten Special Education Severe multiplied by } 1.5) + (\text{GR } 1\text{-}12 \text{ enrolment minus GR } 1\text{-}12 \text{ Special Education Severe}) + (\text{GR } 1\text{-}12 \text{ Special Education Severe multiplied by } 3)$
- iii. $\text{Utilization Rate} = \text{Weighted Enrolment} \div \text{Provincial Capacity}$
- iv. *Capacity values are given as calculated under the Instructional Area Method, currently prescribed by the Province of Alberta

SCHOOL	2022 WEIGHTED ENROLMENT	2022 PROVINCIAL % UTILIZ.	2023 WEIGHTED ENROLMENT	2023 PROVINCIAL CAPACITY	# Of Modulars/ Portables	2023 PROVINCIAL % UTILIZ.	Provincial Utilization Difference (2022 to 2023)
AREA 5							
ACADIA SCHOOL	405	82%	466	493	0	95%	12%
AUBURN BAY SCHOOL	492	81%	604	604	6	100%	19%
BAYSIDE SCHOOL	304	56%	532	545	6	98%	42%
BRIDLEWOOD SCHOOL	443	76%	443	584	12	76%	0%
CENTENNIAL HIGH SCHOOL	1632	107%	1779	1460	0	122%	15%
CHAPARRAL SCHOOL	491	101%	504	484	8	104%	3%
COPPERFIELD SCHOOL	585	101%	569	579	12	98%	-3%
CRANSTON SCHOOL	534	90%	626	596	12	105%	15%
DEER RUN SCHOOL	371	85%	400	434	6	92%	7%
DOUGLASDALE SCHOOL	401	90%	387	447	7	87%	-3%
DR. GEORGE STANLEY SCHOOL	681	75%	710	913	8	78%	3%
DR. MARTHA COHEN SCHOOL	869	92%	898	947	0	95%	3%
FAIRVIEW SCHOOL	889	89%	912	994	0	92%	2%
FISH CREEK SCHOOL	634	98%	612	647	0	95%	-3%
HAULTAIN MEMORIAL SCHOOL	201	69%	200	293	0	68%	-1%
JOANE CARDINAL-SCHUBERT HIGH SCHOOL	1757	100%	2023	1615	0	125%	26%
LAKE BONAVISTA SCHOOL	348	88%	364	397	2	92%	4%
LAKESHORE SCHOOL	945	105%	1000	971	0	103%	-2%
LE ROI DANIELS SCHOOL	519	92%	528	563	2	94%	2%
LORD BEAVERBROOK HIGH SCHOOL	1856	82%	2034	2130	1	96%	14%
MAHOGANY SCHOOL	498	90%	677	551	0	123%	33%
MAPLE RIDGE SCHOOL	348	76%	365	456	0	80%	4%
MCKENZIE HIGHLANDS SCHOOL	905	96%	913	947	0	96%	1%
MCKENZIE LAKE SCHOOL	572	86%	572	632	2	91%	5%
MCKENZIE TOWNE SCHOOL	570	84%	591	679	8	87%	3%
MIDNAPORE SCHOOL	379	70%	407	543	12	75%	5%
MIDSUN SCHOOL	755	77%	767	975	1	79%	1%
MOUNTAIN PARK SCHOOL	629	77%	651	813	16	80%	3%
NEW BRIGHTON SCHOOL	588	102%	593	579	12	102%	1%
PRINCE OF WALES SCHOOL	299	78%	290	381	4	76%	-2%
R. T. ALDERMAN SCHOOL	759	92%	734	826	1	89%	-3%
SAMUEL W. SHAW SCHOOL	794	79%	868	1008	16	86%	7%
SIBYLLA KIDDLE SCHOOL	450	79%	550	573	0	96%	18%
SOMERSET SCHOOL	221	59%	236	374	4	63%	4%
WILLOW PARK SCHOOL	599	89%	605	670	0	90%	1%
WILMA HANSEN SCHOOL	452	73%	471	623	8	76%	3%
AREA 5 - TOTAL	23,169	87%	24,877	26,326	166	95%	8%

2023 - 2024 SCHOOL ENROLMENT REPORT - School Capacity and Utilization

Attachment IX

- i. The provincial utilization rate of each school building includes lease exemptions as of September 1 of the current year
- ii. Weighted Enrolment = (Kindergarten minus Kindergarten Special Education Severe) divided by 2) + (Kindergarten Special Education Severe multiplied by 1.5) + (GR 1-12 enrolment minus GR1-12 Special Education Severe) + (GR1-12 Special Education Severe multiplied by 3)
- iii. Utilization Rate = Weighted Enrolment divided by Provincial Capacity
- iv. *Capacity values are given as calculated under the Instructional Area Method, currently prescribed by the Province of Alberta

SCHOOL	2022 WEIGHTED ENROLMENT	2022 PROVINCIAL % UTILIZ.	2023 WEIGHTED ENROLMENT	2023 PROVINCIAL CAPACITY	# Of Modulars/ Portables	2023 PROVINCIAL % UTILIZ.	Provincial Utilization Difference (2022 to 2023)
AREA 6							
A. E. CROSS SCHOOL	609	69%	696	886	0	79%	10%
ALTADORE SCHOOL	360	91%	386	397	0	97%	7%
ALTERNATIVE HIGH SCHOOL	193	71%	284	251	0	113%	42%
ANDREW SIBBALD SCHOOL	343	77%	354	447	0	79%	3%
BANTING AND BEST SCHOOL	160	64%	163	250	2	65%	1%
BRAESIDE SCHOOL	208	37%	222	559	0	40%	2%
CANYON MEADOWS SCHOOL	408	75%	417	546	0	76%	2%
CEDARBRAE SCHOOL	212	77%	204	276	0	74%	-3%
CENTRAL MEMORIAL HIGH SCHOOL	1840	90%	1865	1923	0	97%	7%
CHINOOK PARK SCHOOL	408	60%	480	683	0	70%	11%
DAVID THOMPSON SCHOOL	642	91%	623	706	0	88%	-3%
DR. E. P. SCARLETT HIGH SCHOOL	1696	100%	1758	1543	0	114%	14%
DR. FREDA MILLER SCHOOL	412	70%	493	587	0	84%	14%
EMILY FOLLENSBEE SCHOOL	258	96%	273	269	0	102%	6%
ETHEL M. JOHNSON SCHOOL	352	67%	326	527	0	62%	-5%
EUGENE COSTE SCHOOL	316	52%	343	497	0	69%	17%
EVERGREEN SCHOOL	436	74%	457	533	12	86%	12%
GLENBROOK SCHOOL	286	72%	308	353	0	87%	15%
GLENMEADOWS SCHOOL	290	56%	352	516	11	68%	12%
HAROLD PANABAKER SCHOOL	452	76%	465	592	4	79%	2%
HAYSBORO SCHOOL	203	90%	205	226	0	91%	1%
HENRY WISE WOOD HIGH SCHOOL	1946	91%	2024	2025	0	100%	9%
JANET JOHNSTONE SCHOOL	413	81%	471	507	8	93%	11%
JOHN WARE SCHOOL	576	96%	530	603	1	88%	-8%
LOUIS RIEL SCHOOL	829	96%	857	867	4	99%	3%
MARSHALL SPRINGS SCHOOL	723	82%	709	881	0	81%	-2%
NELLIE MCCLUNG SCHOOL	349	68%	367	510	0	72%	4%
NICKLE SCHOOL	215	30%	224	763	3	29%	-1%
RIVERBEND SCHOOL	285	57%	300	502	6	60%	3%
ROBERT WARREN SCHOOL	283	60%	305	472	3	65%	5%
RON SOUTHERN SCHOOL	468	82%	515	571	6	90%	8%
SAM LIVINGSTON SCHOOL	371	64%	389	576	7	67%	3%
SHERWOOD SCHOOL	389	58%	433	669	0	65%	7%
SUNDANCE SCHOOL	431	86%	495	500	8	99%	13%
WOODBINE SCHOOL	414	91%	392	453	7	87%	-5%
WOODLANDS SCHOOL	275	68%	280	402	4	70%	1%
WOODMAN SCHOOL	501	59%	513	846	0	61%	1%
AREA 6 - TOTAL	18,544	76%	19,471	23,714	86	82%	6%

2023 - 2024 SCHOOL ENROLMENT REPORT - School Capacity and Utilization

Attachment IX

- i. The provincial utilization rate of each school building includes lease exemptions as of September 1 of the current year
- ii. $\text{Weighted Enrolment} = (\text{Kindergarten minus Kindergarten Special Education Severe}) \div 2 + (\text{Kindergarten Special Education Severe multiplied by } 1.5) + (\text{GR } 1\text{-}12 \text{ enrolment minus GR } 1\text{-}12 \text{ Special Education Severe}) + (\text{GR } 1\text{-}12 \text{ Special Education Severe multiplied by } 3)$
- iii. $\text{Utilization Rate} = \text{Weighted Enrolment} \div \text{Provincial Capacity}$
- iv. *Capacity values are given as calculated under the Instructional Area Method, currently prescribed by the Province of Alberta

SCHOOL	2022 WEIGHTED ENROLMENT	2022 PROVINCIAL % UTILIZ.	2023 WEIGHTED ENROLMENT	2023 PROVINCIAL CAPACITY	# Of Modulars/ Portables	2023 PROVINCIAL % UTILIZ.	Provincial Utilization Difference (2022 to 2023)
AREA 7							
ALEXANDER FERGUSON SCHOOL	202	81%	219	251	0	87%	7%
ALL BOYS PROGRAM	100	39%	81	257	0	32%	-7%
BATTALION PARK SCHOOL	522	76%	575	687	13	84%	8%
BISHOP PINKHAM SCHOOL	613	80%	611	769	0	80%	0%
BRIAR HILL SCHOOL	228	82%	226	278	0	81%	-1%
COLONEL WALKER SCHOOL (Includes Piitoayis)	322	54%	354	597	1	59%	5%
CONNAUGHT SCHOOL	482	121%	446	399	0	112%	-9%
DR. OAKLEY SCHOOL	180	40%	186	430	0	43%	3%
DR. ROBERTA BONDAR SCHOOL	568	101%	586	560	0	105%	3%
EARL GREY SCHOOL	198	57%	336	349	0	96%	40%
ELBOW PARK SCHOOL	212	77%	211	276	0	76%	0%
ELBOYA SCHOOL	708	92%	721	767	6	94%	2%
ERNEST MANNING HIGH SCHOOL	1584	95%	1750	1678	0	104%	10%
GLAMORGAN SCHOOL	694	102%	732	677	2	108%	6%
GLENDALE SCHOOL	258	79%	260	325	0	80%	1%
GRIFFITH WOODS SCHOOL	965	111%	966	869	0	111%	0%
HILLHURST SCHOOL	262	73%	290	357	0	81%	8%
JENNIE ELLIOTT SCHOOL	581	83%	598	685	0	87%	5%
KILLARNEY SCHOOL	354	95%	337	373	0	90%	-5%
MOUNT ROYAL SCHOOL	474	103%	443	459	0	97%	-7%
OLYMPIC HEIGHTS SCHOOL	501	74%	482	653	14	74%	0%
QUEEN ELIZABETH SCHOOL	345	89%	393	387	2	101%	12%
QUEEN ELIZABETH HIGH SCHOOL	1171	85%	1199	1392	0	86%	1%
RAMSAY SCHOOL	193	55%	304	349	0	87%	32%
RICHMOND SCHOOL	266	96%	333	278	0	120%	24%
RIDEAU PARK SCHOOL	439	93%	468	473	0	99%	6%
SIMONS VALLEY SCHOOL	688	112%	711	614	12	116%	4%
SUNALTA SCHOOL	333	81%	340	410	0	83%	2%
UNIVERSITY SCHOOL	318	59%	363	537	0	68%	8%
VINCENT MASSEY SCHOOL	789	84%	818	939	0	87%	3%
WEST RIDGE SCHOOL	888	97%	865	916	8	94%	-3%
WEST SPRINGS SCHOOL	585	98%	593	596	12	100%	1%
WESTERN CANADA HIGH SCHOOL	2205	104%	2274	2072	0	110%	6%
WESTGATE SCHOOL	527	72%	567	727	0	78%	6%
WILDWOOD SCHOOL	475	77%	505	618	0	82%	5%
WILLIAM REID SCHOOL	283	95%	280	298	4	94%	-1%
AREA 7 - TOTAL	19,507	87%	20,418	22,302	74	92%	5%
GRAND TOTALS	134,969	87%	142,827	154,981	827	92%	5%

2023-2024 LEASED SPACE IN OPERATING CBE SCHOOLS

(includes both full-time and part-time leases)

CBE AREA	SCHOOL NAME	LICENSEE NAME	AREA (SQ.M)
1	Belvedere Parkway	Kids Love Bowness Ltd.	226.7
1	Bowcroft	Children Come First Association	444.3
1	Captain John Palliser	Captain John Palliser Out-of-School Care	255.2
1	Dr. E.W. Coffin	Millennium Kidz N Kare Ltd.	224.4
1	Eric Harvie	Coded Minds Canada Incorporated	231.5
1	Hawkwood	Children Come First Association	337.5
1	Marion Carson	Pre-Kindergarten Educational Services	88.5
1	Marion Carson	Society of Briar Hill Children's Programs	357.5
1	Terrace Road	Summit Kids	296.3
1	Terrace Road	University Heights Nursery School Association	73.9
1	Tuscany	Coded Minds Canada Incorporated	249.6
1	West Dalhousie	Dalhousie Community Association	348.5
2	Banff Trail	Children Come First Association	346.1
2	Buchanan	S'Cool Kids Club Inc. <i>*NEW</i>	159.2
2	Buffalo Rubbing Stone	Mighty Learner Corp	343.7
2	Cambrian Heights	Children Come First Association	345.1
2	Capitol Hill	Adventurers School Age Care Ltd.	330.7
2	Catherine Nichols Gunn	Children Come First Association	358.6
2	Collingwood	Adventurers School Age Care Ltd.	350.1
2	Colonel Sanders (TLC)	Northmount Student Care	253.9
2	Dalhousie	Dalhousie Community Association	491.4
2	Highwood	Children Come First Association	435.5
2	Huntington Hills	Summit Kids	279.1
2	Kenneth D. Taylor	Children Come First Association	341.9
2	King George	Pleasant Heights After School Care Association	461.1
2	North Haven	Children Come First Association	403.2
2	Panorama Hills	Pleasant Heights After School Care Association	224.7
2	Varsity Acres	Seeds of S.P.I.C.E Early Learning Centre Inc.	405.3
2	W.O. Mitchell	Summit Kids	443.2
3	Abbeydale	RIEL Institute for Education & Learning	106.0
3	Belfast	Belfast Student Care	269.8
3	Coventry Hills	Topp Kids Foundation	439.2
3	Mount View	Creative World	129.4
3	Niitsitapi Learning Centre	Alberta Health Services (Elbow River Healing Lodge)	17.8
3	Northern Lights School	Little Steps Before and After School Care	429.2
3	Rosemont	Rosemont Community Childcare	223.5
3	Stanley Jones	Adventures Child Care	363.8
3	Sunnyside	Pre-Kindergarten Educational Services	104.2
3	Sunnyside	Sunnyside Out-of-School Care	109.6
4	Louise Dean (Kensington)	Kindred Connections Society	580.2
4	Louise Dean (Kensington)	Alberta Health Services	28.0
4	Marlborough	Kidzclub Calgary Ltd.	178.7
4	Mayland Heights	Society of Briar Hill Children's Programs	444.7
4	Pineridge	Boys and Girls Club of the Foothills	425.2
4	Taradale	Taradale Student Care	201.0
5	Acadia	Adventures Child Care	443.2

2023-2024 LEASED SPACE IN OPERATING CBE SCHOOLS

(includes both full-time and part-time leases)

CBE AREA	SCHOOL NAME	LICENSEE NAME	AREA (SQ.M)
5	Auburn Bay	Topp Kids Foundation	457.8
5	Bayside	Topp Kids Foundation	525.0
5	Chaparral	Juvenescence Child Development Centre Ltd.	436.4
5	Copperfield	Topp Kids Foundation	343.7
5	Cranston	Juvenescence Child Development Centre Ltd.	330.0
5	Douglasdale	A Step Ahead - Child Development Services	154.2
5	Fish Creek	1st Class - After Class	339.1
5	Lake Bonavista	Rec House	226.2
5	Mahogany	1st Class Innovative Child Care Solutions	434.4
5	Maple Ridge	Topp Kids Foundation	321.4
5	McKenzie Lake	Topp Kids Foundation	436.6
5	McKenzie Towne	Rec House	340.4
5	Midnapore	Mid-Sun Child Care	311.9
5	New Brighton	1st Class - After Class	343.7
5	Prince Of Wales	Topp Kids Foundation	461.3
5	Sibylla Kiddle School	1st Class - After Class	429.2
5	Somerset	1st Class Innovative Child Care Solutions	299.7
6	Altadore	Seeds of S.P.I.C.E Early Learning Centre Inc.	331.1
6	Andrew Sibbald	Rec House	457.7
6	Banting and Best	Coded Minds Canada Incorporated	265.4
6	Chinook Park	Adventurers School Age Care Ltd.	445.7
6	Dr. Freda Miller School	Seeds of S.P.I.C.E Early Learning Centre Inc.	371.0
6	Ethel M. Johnson	Adventures Child Care	268.8
6	Eugene Coste	Calgary Child's Play Inc.	514.7
6	Eugene Coste	Connect Society - Deafness Education,	325.7
6	Evergreen	Topp Kids Foundation	419.6
6	Glenbrook	Glenbrook Preschool Society	72.7
6	Glenbrook	Maple Roots Inc.	180.9
6	Glenmeadows	Calgary Child's Play Inc.	332.1
6	Haysboro	Maple Roots Inc.	261.0
6	Janet Johnstone	Creations Child Care	243.8
6	Nellie McClung	Summit Kids	324.3
6	Ron Southern	1st Class - After Class	452.3
6	Sam Livingston	Rec House	540.9
6	Sundance	Children Can Succeed Inc.	226.8
7	Alexander Ferguson	Alexander Ferguson Elementary School Society	255.0
7	Battalion Park	Kidzinc School Care Society of Alberta	282.9
7	Briar Hill	Hounsfield Heights - Briar Hill Community Playschool	83.7
7	Briar Hill	Society of Briar Hill Children's Programs	363.1
7	Connaught	Churchill Park Family Care Society	222.1
7	Dr. Oakley	Trellis Society	80.7
7	Dr. Roberta Bondar	Summit Kids	341.2
7	Earl Grey	Little Steps Before and After School Care	342.6
7	Elbow Park	Calgary Child's Play Inc. *NEW	434.3
7	Glamorgan	Maple Roots Inc.	240.9
7	Glendale	Calgary Child's Play Inc.	336.2

2023-2024 LEASED SPACE IN OPERATING CBE SCHOOLS

(includes both full-time and part-time leases)

CBE AREA	SCHOOL NAME	LICENSEE NAME	AREA (SQ.M)
7	Hillhurst	Society of Briar Hill Children's Programs <i>*NEW</i>	204.0
7	Jennie Elliott	Jennie Elliott Student Care	445.3
7	Killarney	Kidzinc School Care Society of Alberta	255.3
7	Olympic Heights	Kidzinc School Care Society of Alberta	349.2
7	Queen Elizabeth	Adventurers School Age Care Ltd.	309.5
7	Ramsay	Coded Minds Canada Incorporated	228.5
7	Richmond	Richmond Child Care Association	228.7
7	Rideau Park	Summit Kids	81.3
7	Simons Valley	Coded Minds Canada Incorporated	309.1
7	Sir James Lougheed	Summit Kids	338.5
7	Sunalta	Scarboro Community Preschool	91.6
7	Sunalta	Sunalta Student Care	401.1
7	University	Summit Kids	469.2
7	West Springs	Maple Roots Inc.	332.5
7	Westgate	Calgary Child's Play Inc.	534.4
7	Wildwood	Kidzinc School Care Society of Alberta	275.3
7	William Reid	Seeds of S.P.I.C.E Early Learning Centre Inc.	322.2

AREA 1: 3,133.9

AREA 2: 5,972.8

AREA 3: 2,192.5

AREA 4: 1,857.8

AREA 5: 6,634.2

AREA 6: 6,034.5

AREA 7: 8,158.4**TOTAL SQUARE METRES LEASED: 33,984.1**

2023-2024 LEASE OF SURPLUS SCHOOL FACILITIES

CBE AREA	SCHOOL NAME	LESSEE NAME	AREA (SQ. M)
1	Belvedere Parkway Bungalow	Thornhill Child Care	373.20
1	Parkdale	Westmount Charter School	6,375.00
3	Greenview	Foundations for the Future Charter Academy	4,669.40
3	Riverside Bungalow	Wilderchild Futures Incorporated	926.44
4	Mountain View	Almadina Language Charter Academy	3,853.20
5	Alice M Curtis	Foundations for the Future Charter Academy	3,441.50
5	Andrew Davison	Foundations for the Future Charter Academy	4,309.00
6	Bel Aire	Calgary Girls Charter Academy	1,252.00
6	Lakeview	Calgary Girls Charter Academy	3,594.00
6	Ogden	Almadina Language Charter Academy	4,887.80
6	Southwood	Foundations for the Future Charter Academy	4,192.00
7	Clem Gardner	Connect Charter School	7,107.00
7	Knob Hill	Calgary Arts Charter Academy	2,270.60
7	Rosscarrock	Calgary Arts Charter Academy	3,330.10
7	Sir William Van Horne	Westmount Charter School	9,670.00
7	Spruce Cliff	Calgary Quest Children's Society	2,387.70

AREA 1:	6,748.20
AREA 2:	-
AREA 3:	5,595.84
AREA 4:	3,853.20
AREA 5:	7,750.50
AREA 6:	13,925.80
AREA 7:	<u>24,765.40</u>

TOTAL SQUARE METRES LEASED: 62,638.94