

Working Together

Working as a team, students, school staff and parents make our Noon Supervision Service successful! Our partnership is strengthened by clear expectations.

Students

- Guided by a clear code of conduct for social behaviour
- Show respect for staff, peers and property
- Resolve differences without physical violence, abusive language or gestures

Parents

- Provide their children with lunch and weather-appropriate clothing
- Provide prompt payment of fees
- Address behavioural issues
- Fill out Registration Form with all requested information; e.g. medical and child care issues
- Provide advanced notice of absence

School

- Provide a safe, clean & secure place for lunch and noon activities
- Accommodate a drop-in service
- Advocate for students, addressing "What's Best for Children"

System

- Establish a fair fee structure for services rendered
- Provide guidance through the Chief Superintendents' Directive for Noon Supervision Services
- Establish business practices and support for financial accountability
- School Support Services provides support for supervisors and principals

How to get in touch

SCHOOL NAME

PHONE NUMBER

CONTACT PERSON

PRINCIPAL'S NAME

System Contact:

If you have any further questions
please contact
noonsupervision@cbe.ab.ca

Spring 2011



Calgary Board of Education

Noon Supervision Service for CBE Elementary Schools



**A service provided for parents
of students staying at school
through the lunch break**



Calgary Board of Education

System Support

Calgary Board of Education commits as much support as possible to ensure our Noon Supervision Service is safe, secure and available to all.

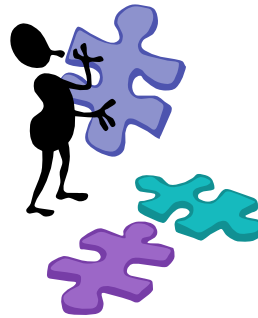


Fees

Waivers are not available for Noon Supervision Service

Students pay for noon supervision when;

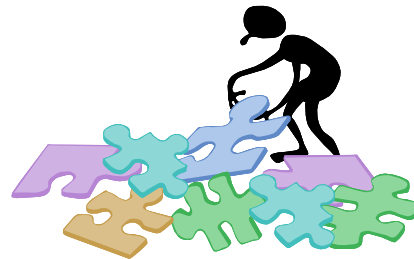
- Student does not live within Transportation Service Area for their designated school and stays for the lunch break
- Student does not live within Transportation Service Area for their designated school but rides the charter bus as a conditional rider and stays for the noon break
- Student lives within the Transportation Service Area for their designated school, but parents drive the student to school



Building Blocks

The CBE Noon Supervision Service is built with key principles in mind:

- Children need a safe and secure place to have lunch
- A caring environment that fosters and maintains respectful, responsible behaviours
- No waiting lists for parents who want to access the service
- Drop-in services are provided
- Flexibility for site-based decisions



School Service

The Noon Supervision Service is an in-school service. Our commitment is to provide our students with:

- Quality supervision
- Safe surroundings for indoor and outdoor activities
- Clean eating facilities

Opportunity for students to socialize with schoolmates

Common Manners

...for a social setting in Calgary Board of Education Schools:

- *"Hands and feet to oneself,"* curtails play fighting and jostling about that leads to more aggressive behaviour
- *"Inside voices and appropriate audience behaviour,"* shows respect for others, sharing the space
- *"Walk don't run,"* ensures safety for all
- *"Limit wandering about while eating,"* as it is in most food establishments to promote cleanliness
- *"Display common courtesies and curb obscene language,"* a way of expressing oneself in a learning environment or public place
- *"Leave your space as you found it,"* is taking ownership for your action

Still have questions????

For more information, please contact your school.