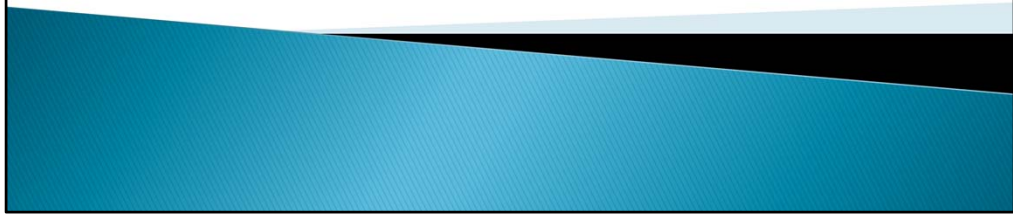


# Looking into the Future Area I High Schools

June 1, 2011



## Open House Agenda

- ▶ Information evening for parents regarding future learning opportunities for students residing in Area 1 as they will go through their high school careers in Bowness High School, the new Northwest High School and Sir Winston Churchill High School--2013 onward
- ▶ **Presentation: 6:30 – 6:45 p.m.**
  - Calgary Board of Education CTS Strategy and Area 1 Programming Considerations
- ▶ **Open House: 6:45 – 8:00 p.m.**
  - Opportunity to ask questions and provide feedback

Good Evening and thank you for taking time on a busy spring evening to attend our Open House. As you know, in Area 1 we will be opening the new North West High School in the fall of 2013, and if you've driven by the site near Crowfoot Mall you also see that the construction is progressing very well.

Our purpose tonight is to provide information for parents regarding the future learning opportunities for students residing in Area 1 in the three community high schools that will be open from 2013 onward.

We would like to begin the evening with a short presentation setting the context and answering some of the typical questions people might have. Then from 6:45 to 8:00 we have a number of folks from our Curriculum and Community Engagement Departments and from the Area 1 Office to answer your individual questions as you consider the possibilities—the opportunities and the challenges.

We need your feedback regarding community designations because the current designations would need to be adjusted somewhat to ensure three vibrant community high schools into the future.

## CTS Strategy

- ▶ **Merla Bolender – System Principal**
  - Calgary Board of Education Career and Technology Strategy

# Area 1 Considerations

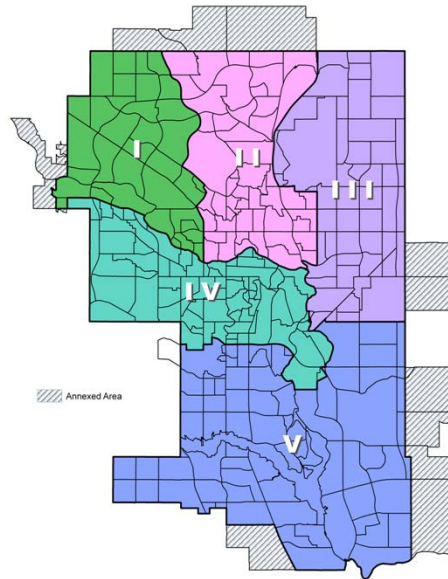
- ▶ **Dr. Dianne Yee – Director, Area 1**

Let's look at Area 1 in more detail. My responsibility as Area Director is teaching and learning in the nearly 40 schools for approximately 17,000 students.

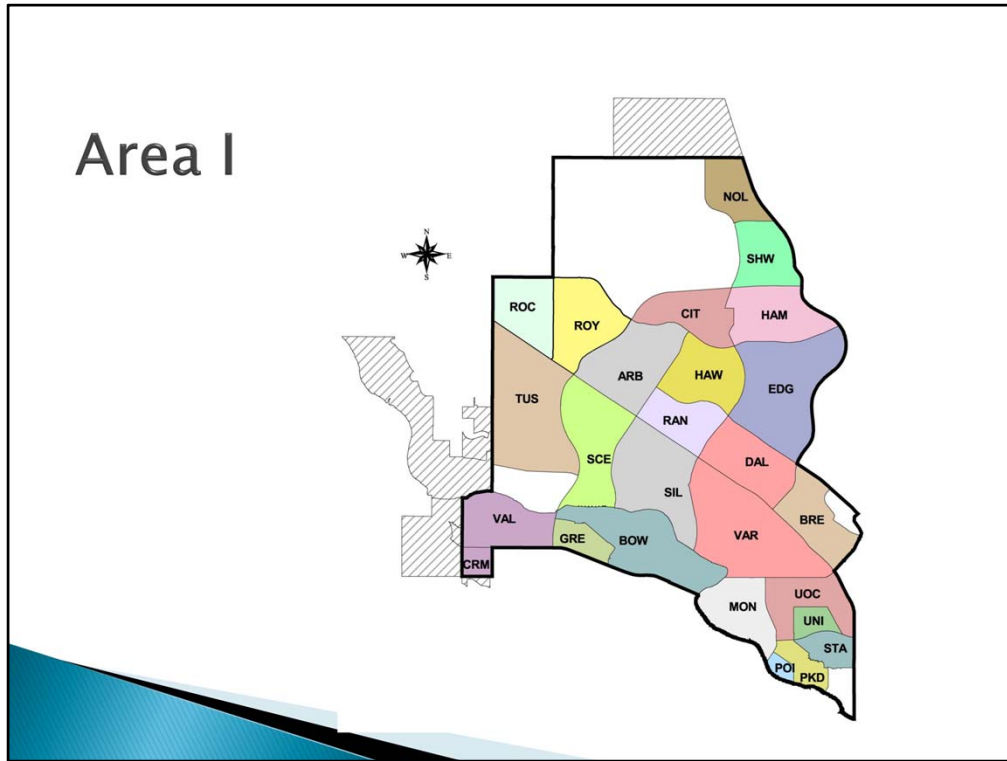
First, I'd like to provide some context as to our student population projections. The folks in our Community Engagement and Operational Planning Department work very hard to provide the best information to help each of the Areas and the whole system plan, and their projections are accurate to 98+ percent.

Then, I'll briefly raise some of the challenges and opportunities we face as we make student programming decisions. We have 2 full years until the new high school opens but that time goes quickly, and as you likely know the process to design and build the high school started four years ago when things were quite different in terms of Alberta Education curriculum and our CBE personalization of learning.

# CBE Administrative Areas



This slide shows the 5 administrative areas in our board, and Area 1 is in the green.



And we have 26 communities in the Area—most of which are built out in terms of housing development.

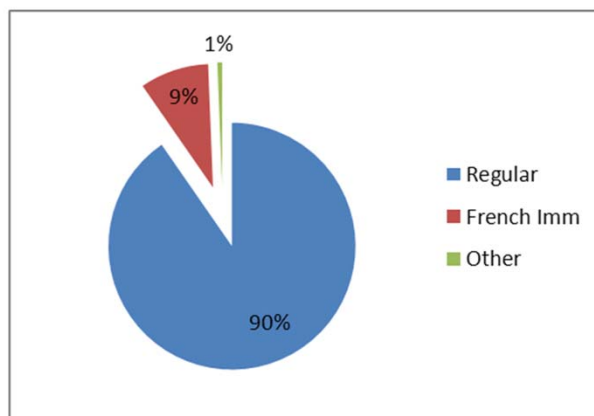
## Area I High School Students

- ▶ Enrolment on September 30, 2010
  - 4,976 Area I high school students are enrolled in CBE schools

Currently we have approximately 5000 high school students residing in Area 1.

# Making Choices

## ▶ Regular and Alternative Programs



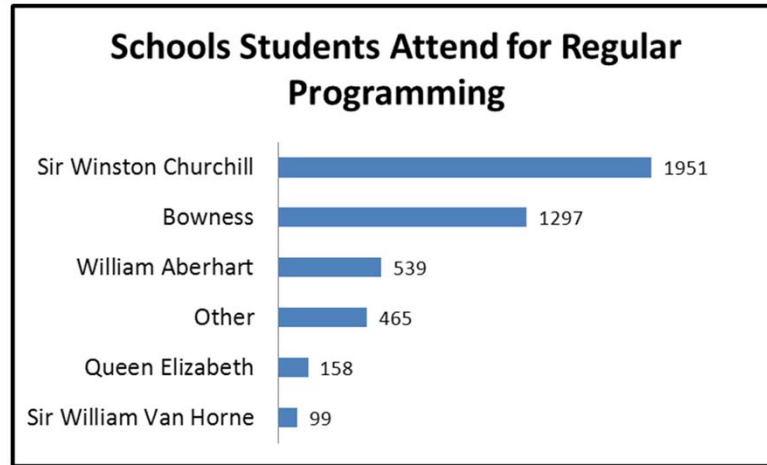
90% of the 5000 students are choosing regular programming

9% are choosing French Immersion – or 449 students.

1% are choosing other alternative programs such as Spanish Bilingual (7), Traditional Learning (TLC) (9), Juno Beach Academy (13) and Arts-Centred Learning (2).

Please note that enrolment for Spanish Bilingual and TLC will increase at senior high as a larger cohort is currently at elementary and middle/junior high levels.

# Making Choices



So you can see the number of Area 1 high school students and the schools they currently attend.

Other category includes:

National Sport School, Juno Beach, Louise Dean, Outreach Programs, unique settings and high schools in Areas 3, 4 and 5.

**Designations for the  
Regular Program  
(2010–2011)**

# Bowness High School

- ▶ Residential Districts (Current):
  - Arbour Lake
  - Bowness, Greenwood/Greenbriar
  - Crestmont
  - Montgomery
  - Rocky Ridge
  - Royal Oak
  - Scenic Acres
  - Silver Springs
  - Tuscany
  - Valley Ridge

These are the current community designations for Bowness High School.

## Sir Winston Churchill High School

- ▶ Residential Districts (Current):
  - Brentwood
  - Charleswood (partial)
  - Dalhousie
  - Edgemont
  - Hamptons
  - Hawkwood
  - Nolan Hill
  - Sherwood
  - Varsity, University of Calgary

These are the current community designations for Sir Winston Churchill.

# William Aberhart High School

- ▶ Residential Districts (Current):
  - Citadel
  - Ranchlands

Just a reminder that we have previously indicated that the Citadel and Ranchlands community students will return to Area 1 when high school space increases in 2013.

## Queen Elizabeth Junior and Senior High School

- ▶ Residential Districts (Current):
  - Parkdale
  - Point McKay
  - St Andrews Heights
  - University Heights
  - West Hillhurst (west of Crowchild Trail)

These are the current community designations for Queen Elizabeth.

## DESIGNATION CHANGES FOR HIGH SCHOOL STUDENTS

- Northwest High School is scheduled to open for the 2013–2014 school year
- Students currently in grades 7, 8 and 9 will be eligible to attend the Northwest High School in September 2013

Students currently in grades 7, 8 and 9 will be eligible to attend the Northwest High School in the fall of 2013.

## Space in Area I 2013–2014 School Year

- ▶ Capacity in Area I will be 5,040 student spaces
  - Bowness – 1,525
  - Sir Winston Churchill – 2,015
  - Northwest High – 1,500

As you see, we will have space for just over 5000 high school students in Area 1 schools beginning in 2013-14.

## High School Outreach Programs and Unique Settings in Area I

- ▶ START (Discovering Choices) Outreach
- ▶ Dr. Gordon Townsend (Alberta Children's Hospital)
- ▶ West View Secondary
- ▶ Wood's Homes (George Wood Learning Centre and William Taylor Learning Centre)
- ▶ Young Adult Program (Foothills Hospital)

**Not included the previous projections because they are whole system schools/programs.**

In addition to those three community high schools, Area 1 has a variety of Outreach programs and unique settings which are not included in the previous student projection numbers because they are whole system schools or programs.

## Projected Population Growth in Calgary

City Growth Trends by CBE Areas by 2020				
Area	Population Forecast			% (Mid)
	Low	Mid	High	
I	11,700	12,300	12,900	6.4%
II	36,400	38,300	40,200	19.9%
III	25,900	27,200	28,500	14.2%
IV	19,500	20,500	21,500	10.7%
V	88,900	93,600	98,300	48.8%
Total	182,400	191,900	201,400	100.0%

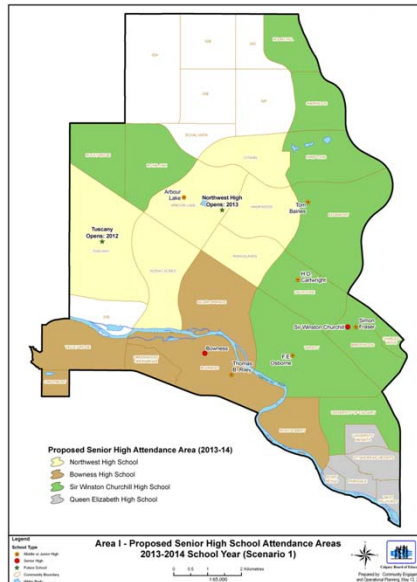
In terms of city population growth in the next 10 years, Area 1 has the lowest projected growth of any area of the city at 6.4%--because most of our communities are built out.

## Projected Enrolment in Area I Regular Programming

Year	GR10	GR11	GR12	Total
2013	1,295	1,300	1,400	3,995
2014	1,238	1,424	1,495	4,157
2015	1,193	1,361	1,638	4,192
2016	1,226	1,312	1,565	4,103
2017	1,094	1,348	1,509	3,951
2018	1,193	1,203	1,550	3,947
2019	1,290	1,312	1,384	3,986
2020	1,284	1,419	1,509	4,212

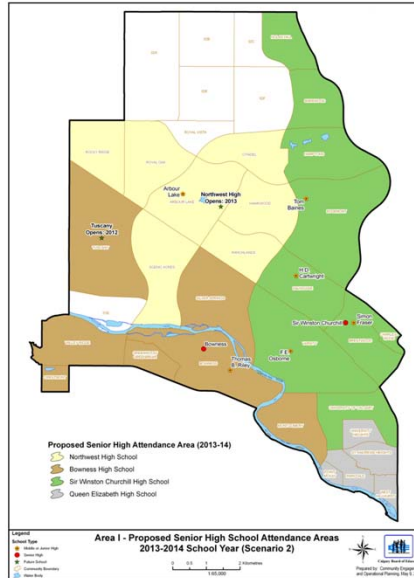
Here are the Area 1 projections for regular programs to 2020, not including Alternative programs like French Immersion, Spanish Bilingual, or Traditional Learning.

# Regular Program Attendance Areas – Scenario 1



Tonight we'd like your feedback on two scenarios that we have created for regular program attendance designations. You may also have other ideas for us to consider—and we'd like to hear those suggestions.

# Regular Program Attendance Areas – Scenario 2



Here is the second one. Please have a close look at the two scenarios posted in our Open House displays. We'll be happy to answer your specific questions then--rather than during this short presentation.

## Area 1 Programming Possibilities

- ▶ **Personalization of Learning and the CTS Strategy**
- ▶ **Academic Core Courses**
- ▶ **System Special Education Classes**

I'd like to give you a brief overview of what we are considering in terms of Area 1 Programming, and we welcome your individual questions and feedback during the Open House portion tonight.

In terms of the CTS Strategy and Personalization of learning, as Merla has indicated, as a system we are working to design programs that meet the learning needs and spark the passions of each of our students. As you look at the program overview possibilities that we have created for each of the three schools, you will notice that some CTS programs will be offered in all three schools, some in 2 of the 3, and some will be offered only in one of the schools. In 2013 the individual school daily timetables and yearly schedules of all three high schools will be aligned to allow students the flexibility to reside in their community school but to take those specialized programs in one of the other schools. As a couple of examples, Sir Winston Churchill will be the only school with Mechatronics programming, Bowness will be the only school with advanced Cosmetology programming and the new North West high school will be the only school with Early Learning and Child Care and advanced Culinary Arts programming.

All of the high schools will have a wide array of academic core courses. Each of the high schools will offer programming for -4 (Knowledge and Employability) courses to -1 courses. We are proposing that each of the high schools would offer courses of academic challenge--Advanced Placement (AP) courses at Bowness and the North West High School and International Baccalaureate (IB) at Sir Winston Churchill.

In terms of System Special Education Classes, it is our plan that Sir Winston Churchill would continue to have the Mental Health Class that it has currently, that the North West high school would have two Placed Learning Program Classes and if a third Paced Learning Program Class was necessary, it would be at Bowness. The Gifted and Talented classes (GATE) will continue to be offered at Queen Elizabeth and Henry Wise Wood as per this year's program review.

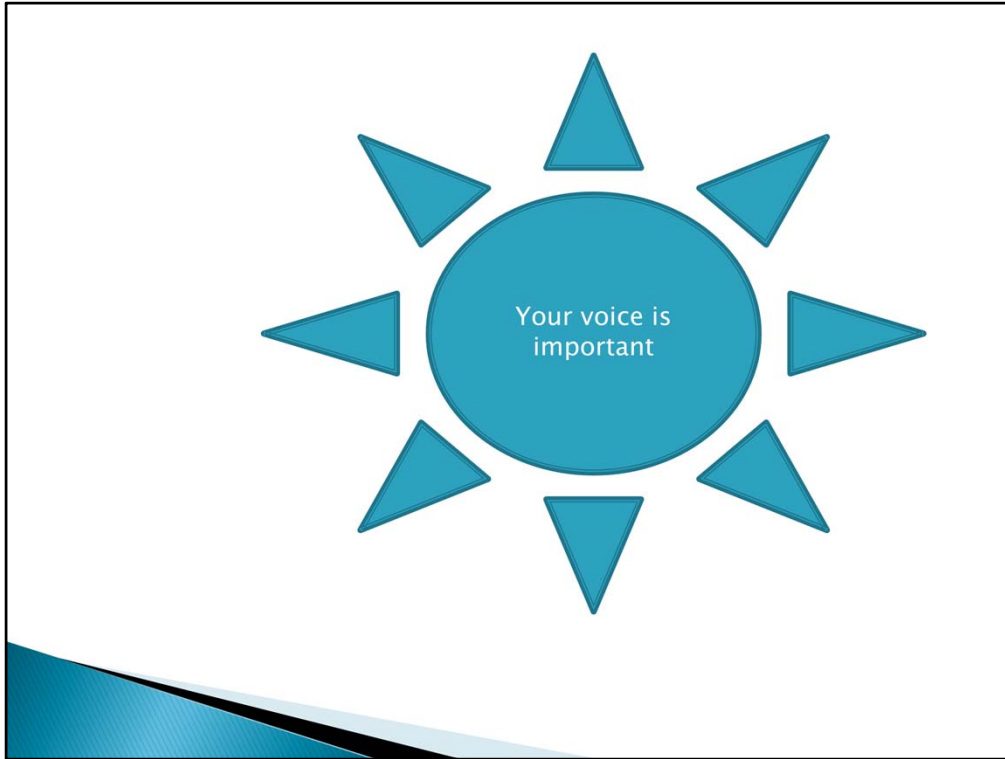
## OTHER CONSIDERATIONS

- ▶ **Area 1 Students in Area II High Schools**
  - **Regular Program and French Immersion (William Aberhart)**
  - **Spanish Bilingual (William Aberhart)**
  - **TLC (Crescent Heights)**
  - **Regular Program (Queen Elizabeth)**

Because of not having enough high school space now, Area 1 regular program students are being designated to William Aberhart and Queen Elizabeth High School.

Regarding Alternative Programs, Area 1 French Immersion and Spanish Bilingual students are currently at William Aberhart, as well. As the German Bilingual Program continues to move through the grades—and for next year, it is at Grade 8—the designated high school for the whole system is Bowness, as you see on the chart. Currently our system has two high schools with TLC programming, Crescent Heights in the north and Henry Wisewood in the south.

As I'm sure you realize it is important in both Regular Programs and Alternative Programs to have a sufficient student cohort to keep them viable, and it may not be possible to have high school Alternative Programs duplicated in each area. Please note that we are having whole system discussions regarding the programming and facility requirements of Alternative Programs—not just Area by Area discussions.



So tonight we are looking into the future and this is not a review of current programming offerings at Bowness and Churchill. We invite you to consider our programming possibilities for each of the three high schools, ask our folks questions, and give us your feedback.

Our sincere appreciation to a number of Directors, Curriculum Specialists and Planning Analysts for being here to help the Area 1 Office with this Open House. Also many thanks to Rick Petrowitsch and Tom Baines staff for hosting us tonight. We look forward to speaking with you individually.