

Haysboro Community Student Accommodation

Stakeholder Meeting

November 5, 2009



Calgary Board of Education



Agenda

- Introduction
 - Issue
 - Parameters
 - Current Status
- Student Accommodation
 - Community Information
 - School Information
 - Student Accommodation Proposal
- Community Engagement
 - Values
 - What is Public Participation
 - Why do P2?
 - Level of Engagement
 - Goal
 - Promise to the Public
 - Decision Making
 - Proposed Community Engagement Process
- Next Steps

Introduction

Issue

- The opening of Evergreen School in September 2010 will have an impact on the K-4 enrolment at Eugene Coste School
- There is low enrolment (K-GR6) from the Haysboro residential district at:
 - Eugene Coste School
 - Haysboro School

Parameters

- Sustainable kindergarten to grade 6 regular programming for the residential district of:
 - Haysboro (*including the portion of the Southwood residential district that is north of Southland Drive*)
- Currently there are 2 schools serving the Haysboro residential district and it is anticipated that only 1 will be required in the future
- A kindergarten to grade 9 regular program learning continuum for the residential district of:
 - Evergreen
- Effective use of space & resources
 - For both educational programming and plant operations & maintenance
- Consideration of effective and efficient transportation and walk zones



Values

- Parent values
- CBE values
 1. Students come first.
 2. Learning is our central purpose.
 3. Public education serves the common good.
- IAP2 values

Student Accommodation



Current Status

□ Eugene Coste School

■ Regular program

- Kindergarten to grade 6 for the south/southeast portion of the Haysboro residential district
- Kindergarten to grade 6 for the portion of the Southwood residential district that is north of Southland Drive
- Bus receiver for Kindergarten to grade 6 students residing in Evergreen
 - A new K-GR4 will open for students residing in Evergreen for the 2010-2011 school year



Current Status

□ **Haysboro School**

■ Regular Program

□ Kindergarten to grade 6 for the north west portion of the Haysboro residential district

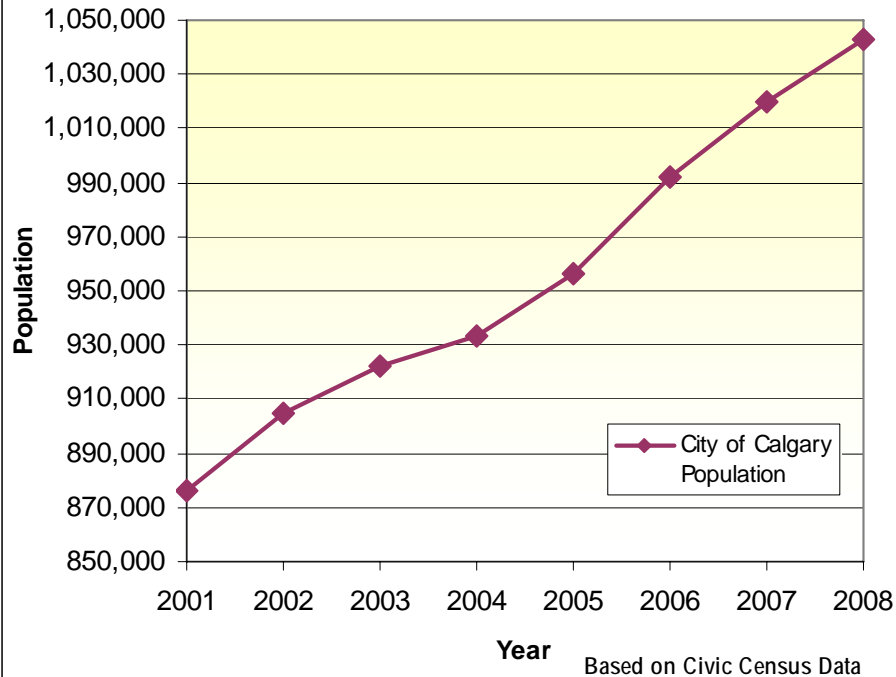
■ Accommodates the Area V administrative office

Haysboro Residential District

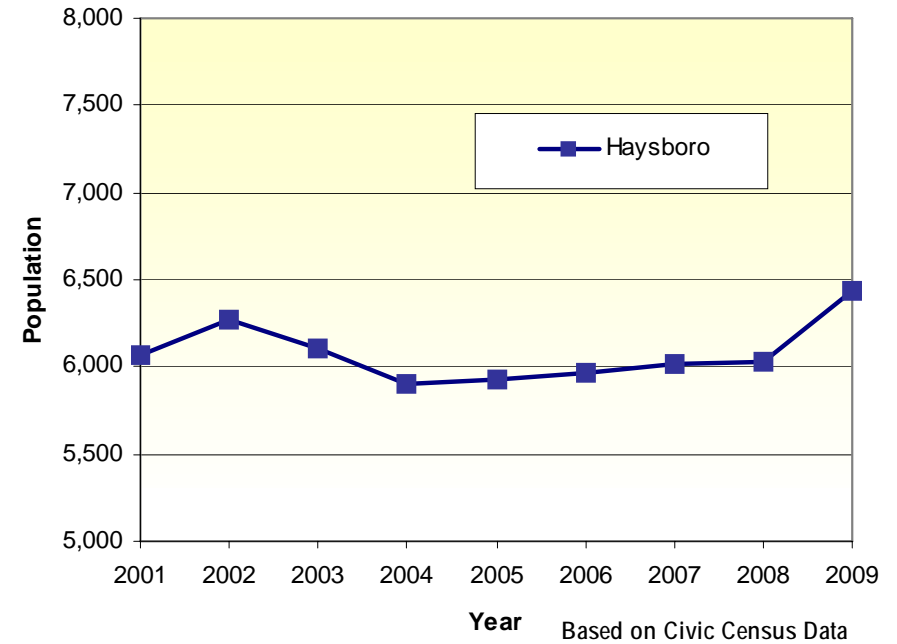
City of Calgary and Haysboro Populations

2001-2009

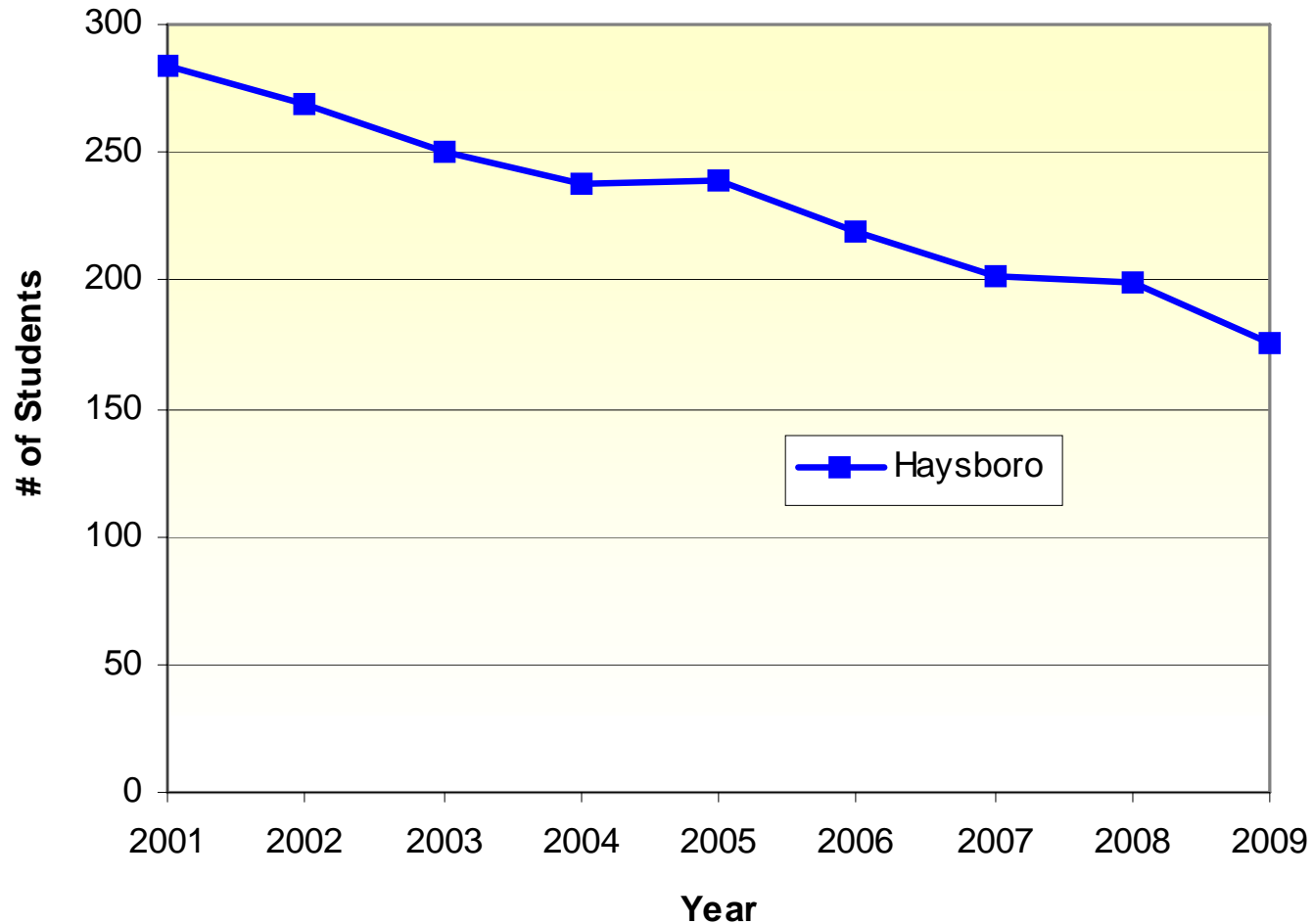
City of Calgary Population 2001-2008



Haysboro Residential District Population 2001-2009

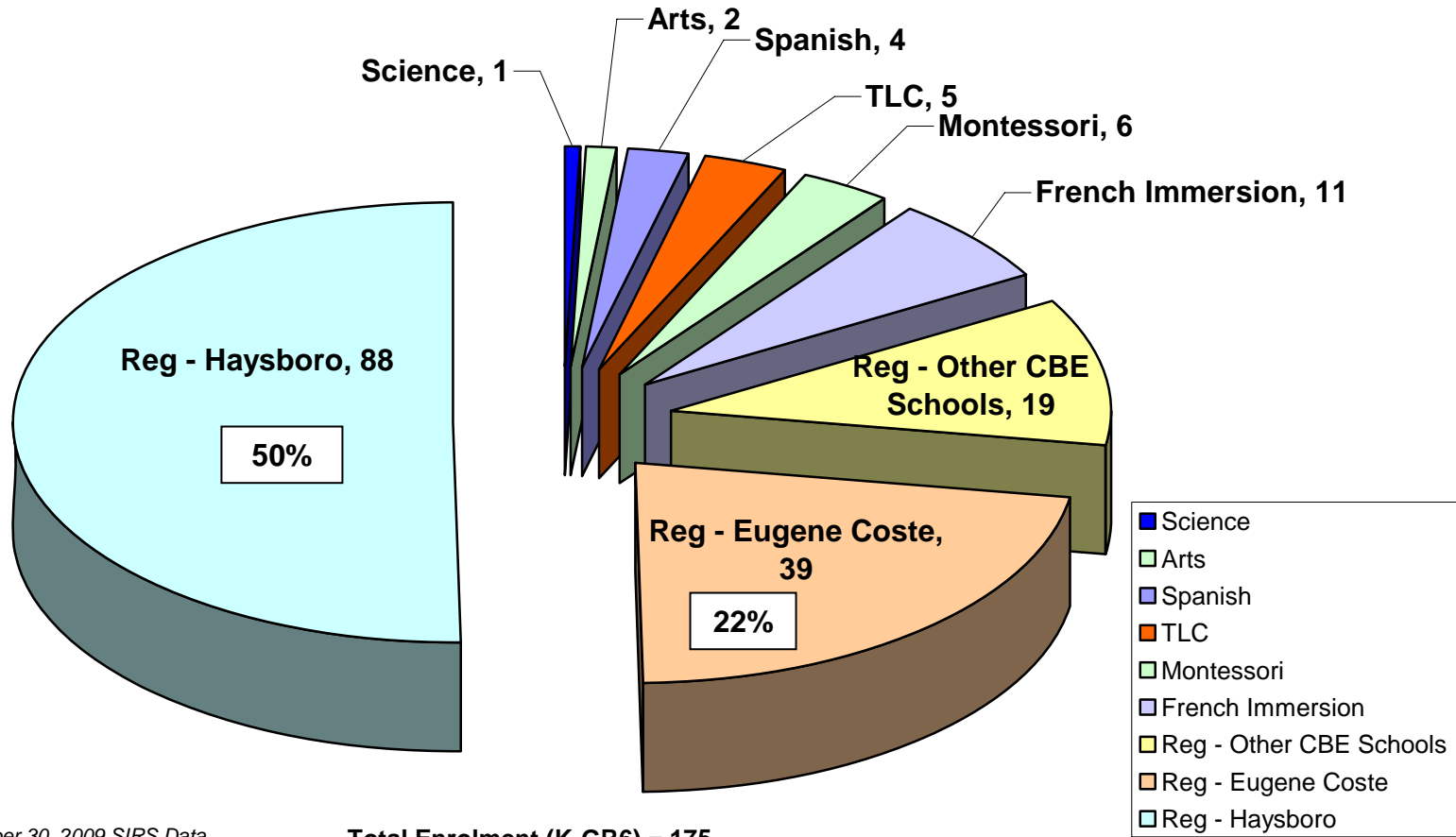


**Kindergarten to Grade 6 Enrolment in All CBE
Schools/Programs
2001-2009**



Based on SIRS Data

What CBE Schools/Programs do K-GR6 students from the Haysboro Residential District Attend?



Based on September 30, 2009 SIRS Data

Preschool Census

Public School Preschool Population

(Based on April 2009 City Census)

Community	YEAR OF BIRTH				
	2008	2007	2006	2005	2004
Haysboro*	42	54	33	40	25

** Includes 2 blocks of Southwood that are West of Elbow Drive and North of Southland Drive*



Eligible for kindergarten in 2010

Note:

1. Public School supporters represent approximately 2/3 of total preschool census
2. Approximately 60% - 70% of eligible students attend the regular program at their designated school



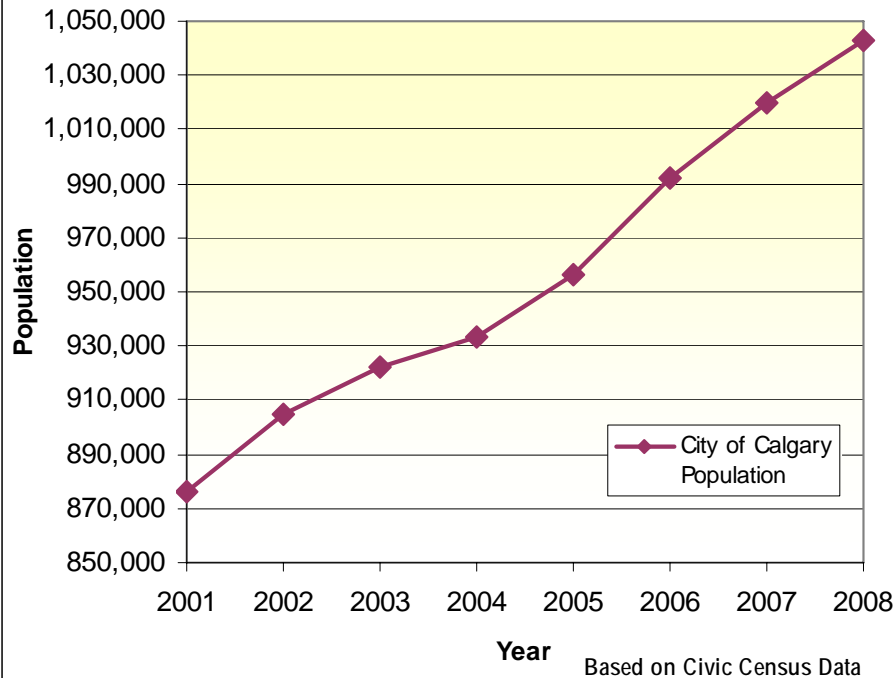
Evergreen Residential District

(includes Evergreen Estates)

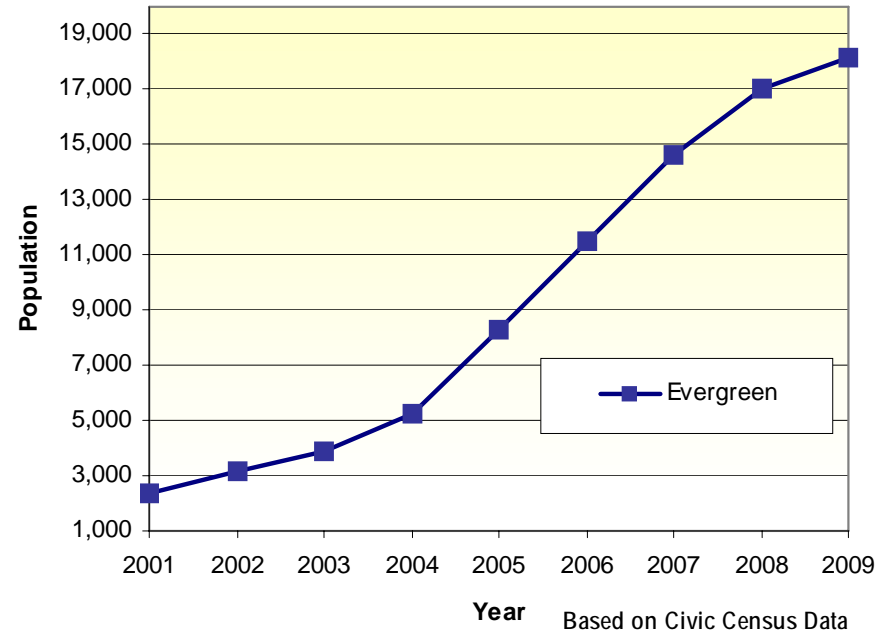
City of Calgary and Evergreen Populations

2001-2009

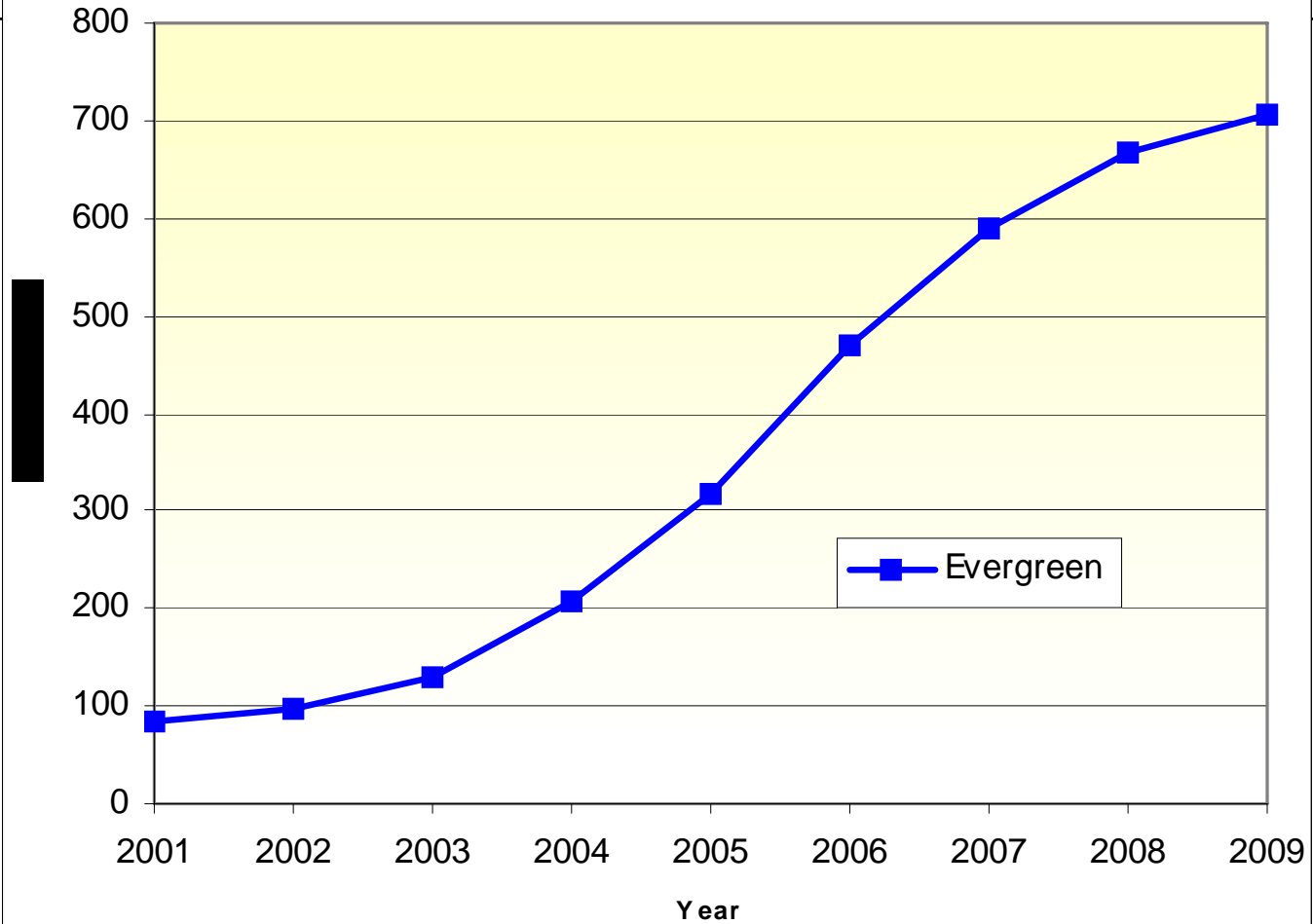
City of Calgary Population 2001-2008



Evergreen Residential District Population 2001-2009

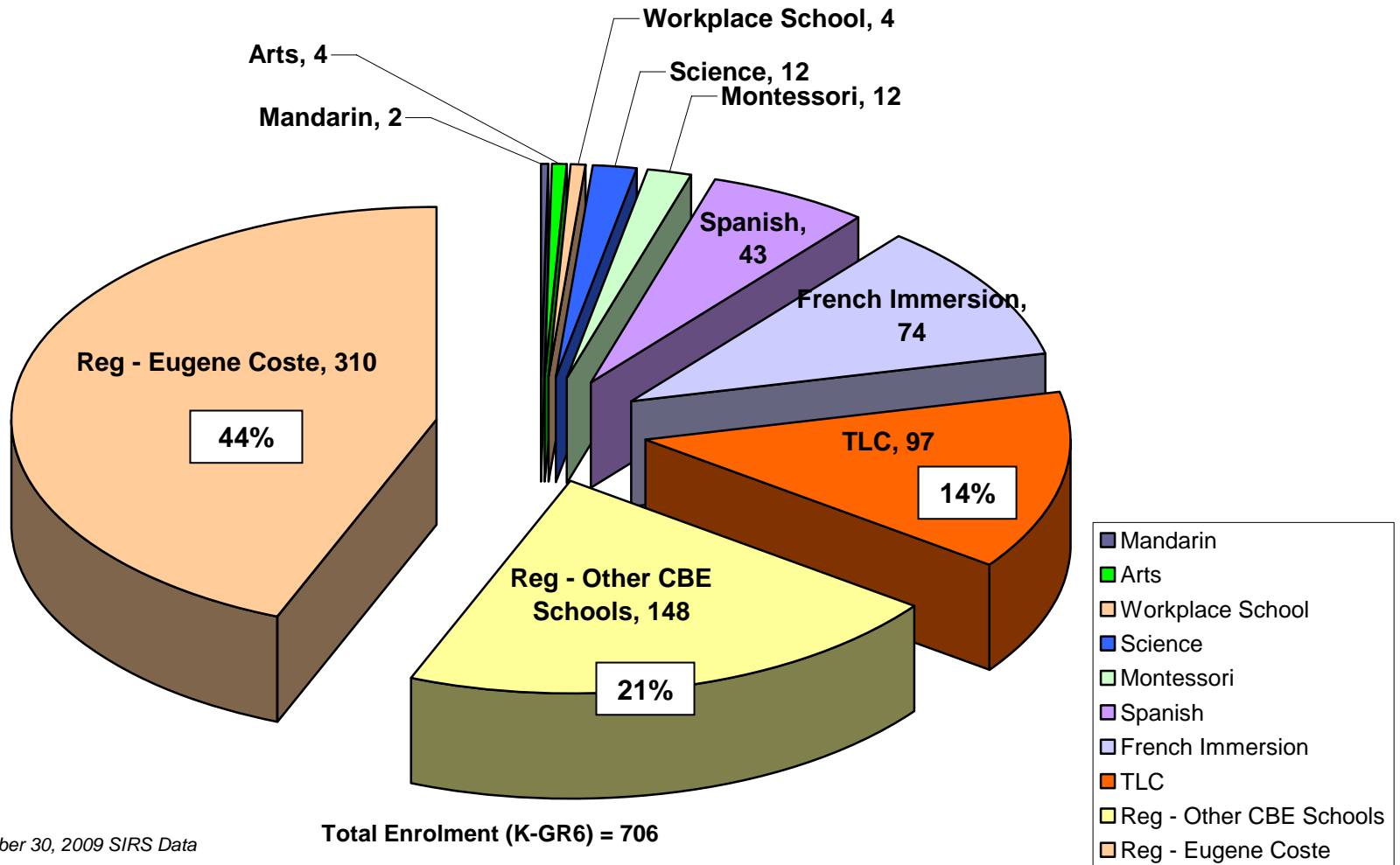


**Kindergarten to Grade 6 Enrolment in All CBE
Schools/Programs
2001-2009**



Based on SIRS Data

What CBE Schools/Programs do K-GR6 students from the Evergreen Residential District Attend?



Based on September 30, 2009 SIRS Data

Preschool Census

Public School Preschool Population

(Based on April 2009 City Census)

Community	YEAR OF BIRTH				
	2008	2007	2006	2005	2004
Evergreen*	217	190	180	150	150

** Includes Evergreen Estates*



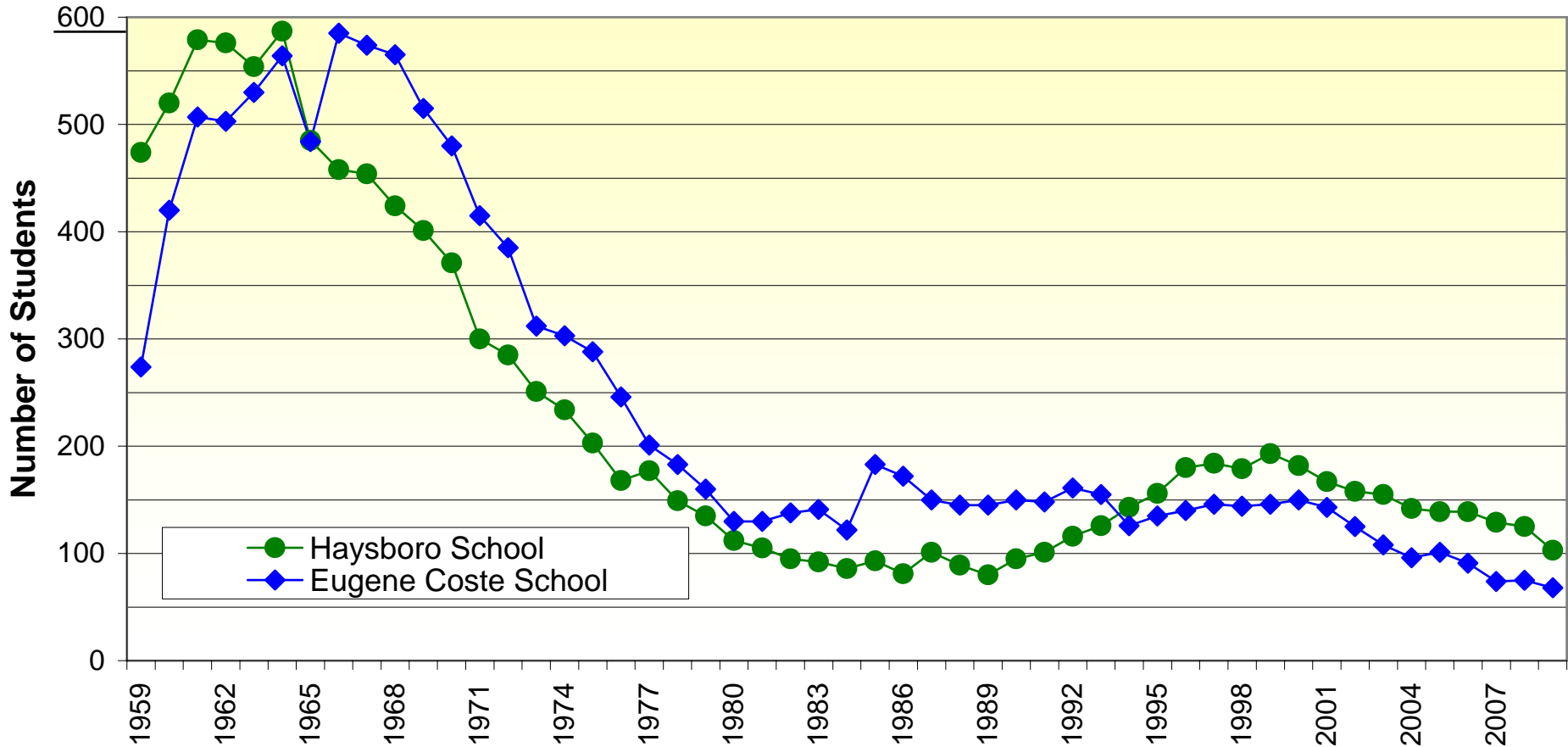
Eligible for kindergarten in 2010

Note:

1. Public School supporters represent approximately 2/3 of total preschool census
2. Approximately 60% - 70% of eligible students attend the regular program at their designated school

School Information

Calgary Board of Education Home Area Enrolment Haysboro & Eugene Coste Schools



Enrolments include Grades 1-6 only
 Enrolments are as of September 30th
 Effective Sept. 1995 all Sp.Ed. Are Included in Enrolments

2009 Enrolment – Eugene Coste School

Instructional Space Available: 575 (23 classrooms)

Enrolment as at September 30, 2009

Community	K	GR1	GR2	GR3	GR4	GR5	GR6	Total
Haysboro - <i>Eugene Coste Boundary</i>	2	7	1	5	8	8	7	38
Haysboro - <i>Haysboro School Boundary</i>							1	1
Southwood		4	4	2	4	2	1	17
Evergreen	44	32	41	44	41	50	58	310
Millrise/Shawnee Slopes				1	2			3
Out-of-Attendance Area			1		3		7	11
Total	46	43	47	52	58	60	74	380

2009 Enrolment – Haysboro School

Instructional Space Available: 225 (9 classrooms excluding Area V Office)

Enrolment as at September 30, 2009

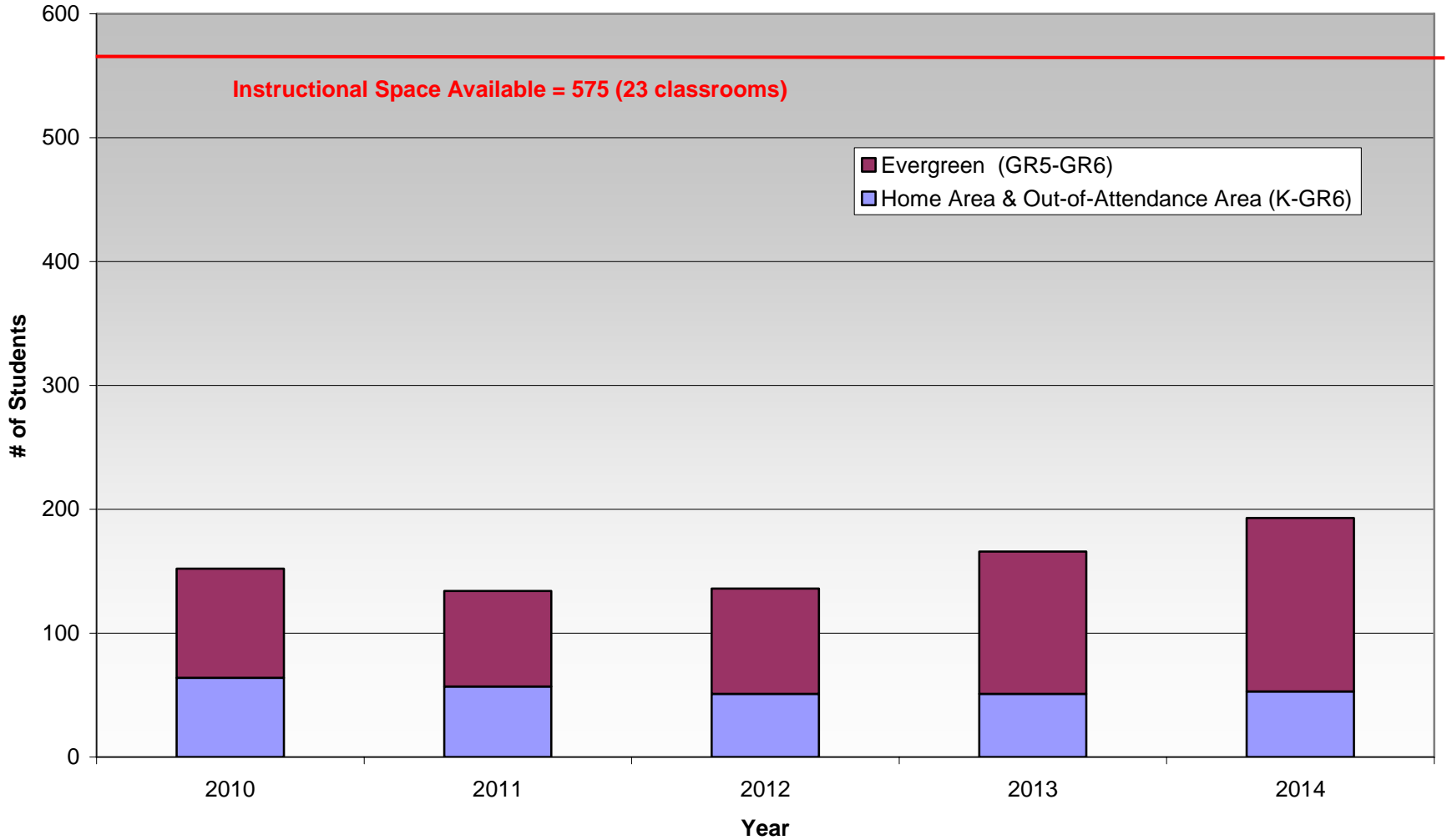
Community	K	GR1	GR2	GR3	GR4	GR5	GR6	Total
Haysboro - <i>Haysboro School Boundary</i>	3	10	5	10	6	10	8	52
Haysboro - <i>Eugene Coste Boundary</i>	6	4	7	6	2	6	5	36
Out-of-Attendance Area	9	5	6		3	9	1	33
Total	18	19	18	16	11	25	14	121

2010- 2014 Status Quo Enrolment Projection – Eugene Coste School

Instructional Space Available: 575 (23 classrooms)

Year	K	GR1	GR2	GR3	GR4	GR5	GR6	Total
2009A	46	43	47	52	58	60	74	380
2010	5	7	10	6	9	54	63	153
2011	5	9	6	8	6	47	48	127
2012	6	8	7	5	8	50	47	130
2013	5	12	6	5	5	76	50	159
2014	5	10	9	5	5	74	76	184

Eugene Coste School
Status Quo Projection
(2010-2014)



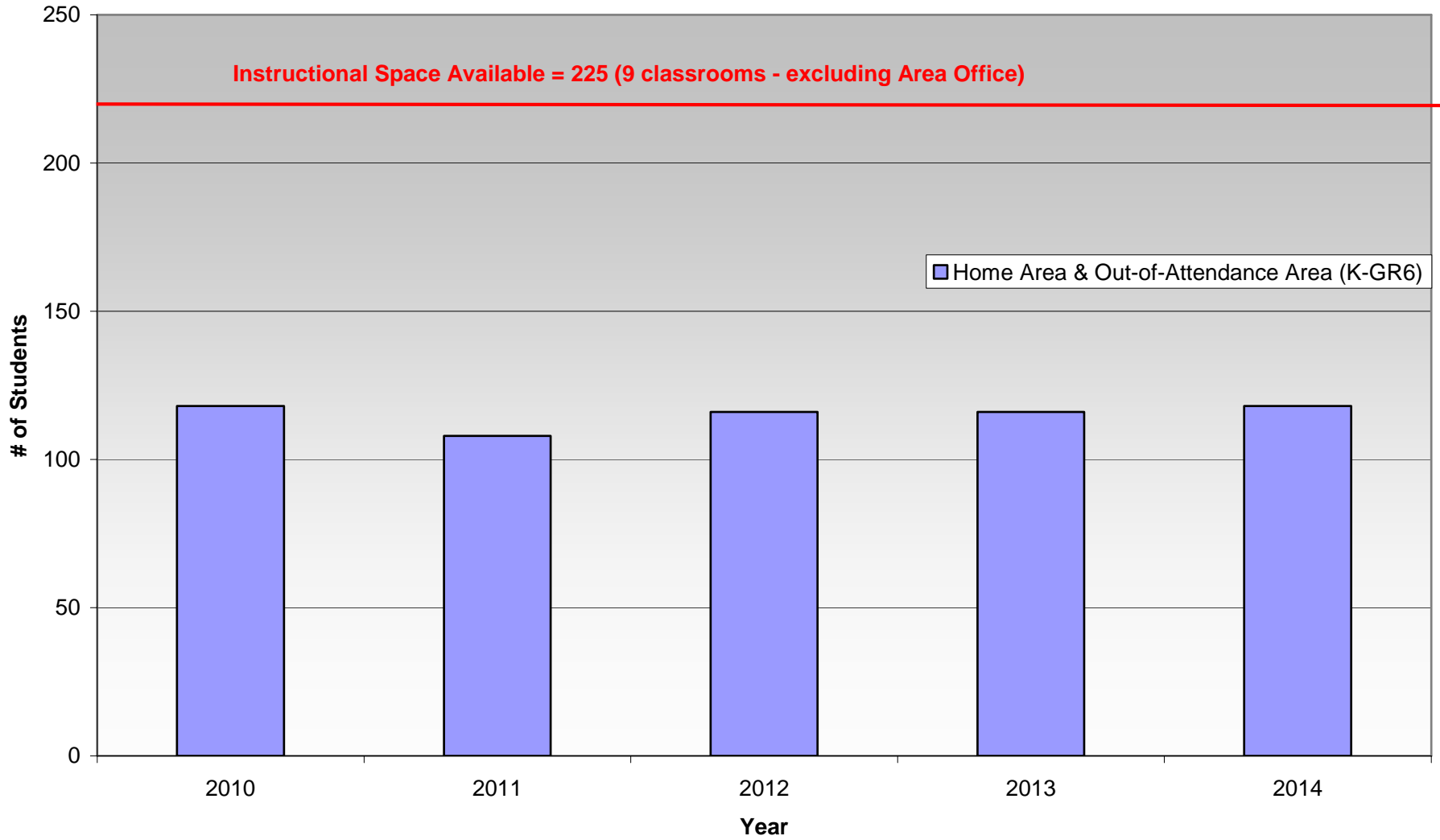
Note: Evergreen Enrolment is for Grade 5 & Grade 6 only

2010- 2014 Status Quo Enrolment Projection – Haysboro School

Instructional Space Available: 225 (9 classrooms excluding Area V Office)

Year	K	GR1	GR2	GR3	GR4	GR5	GR6	Total
2009A	18	19	18	16	11	25	14	121
2010	22	11	18	16	19	12	19	116
2011	15	25	10	16	14	17	11	107
2012	24	16	23	10	15	13	15	115
2013	19	27	15	21	9	13	12	117
2014	19	22	25	14	18	8	12	120

Haysboro School
Status Quo Projection
(2010-2014)

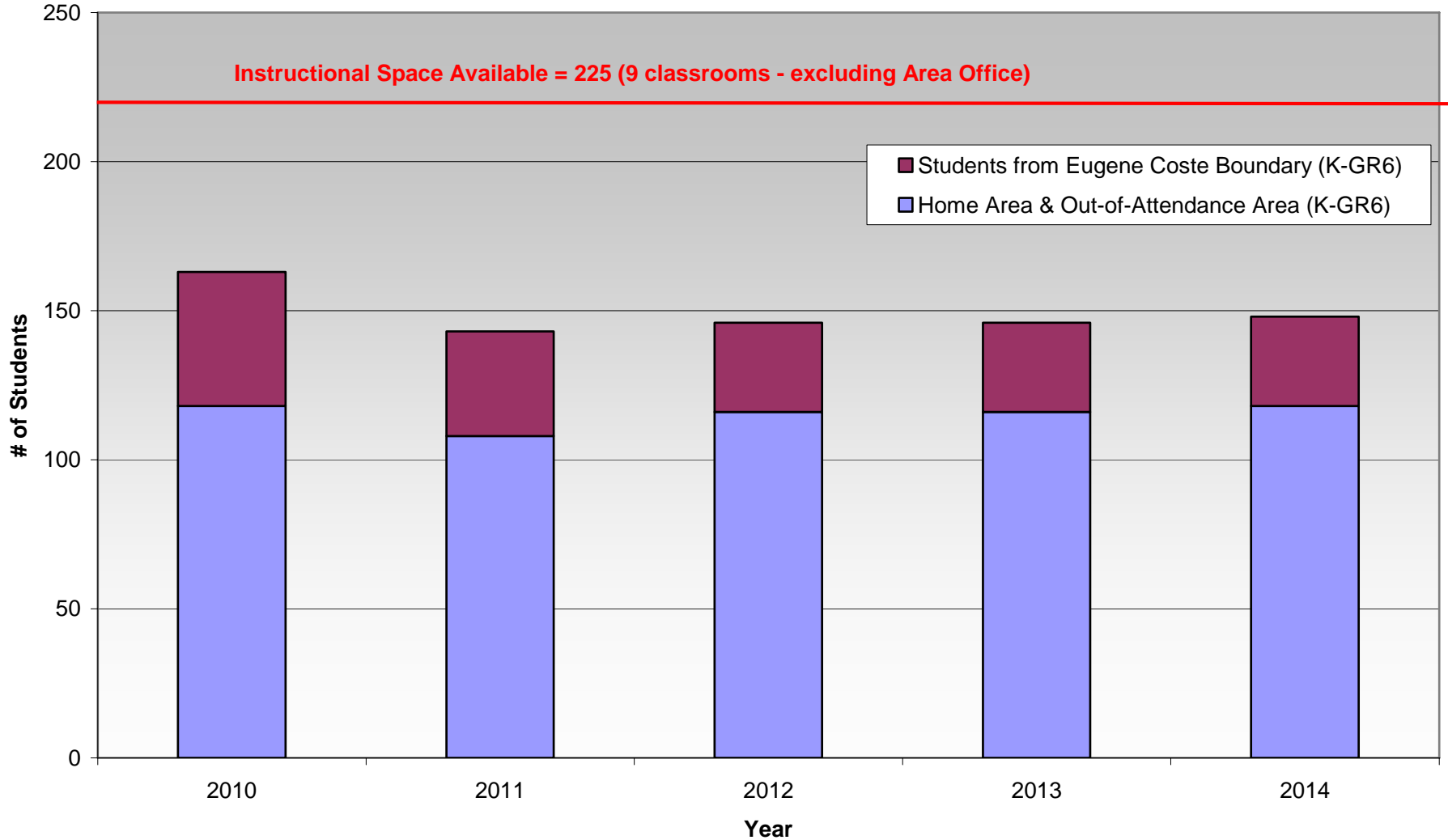


Note: Projection assumes an intake of 5 out-of-attendance area students/grade

Student Accommodation Proposal - Haysboro

- Recommend the consideration of closure of the regular program at Eugene Coste School effective June 30, 2010
 - Designate students in the home area for Eugene Coste School to Haysboro School

Haysboro School
Scenario Projection
(2010-2014)



Note: Projection assumes an intake of 5 out-of-attendance area students/grade

Student Accommodation Proposal - Evergreen

□ K-GR4

- Designate students to the new school in Evergreen

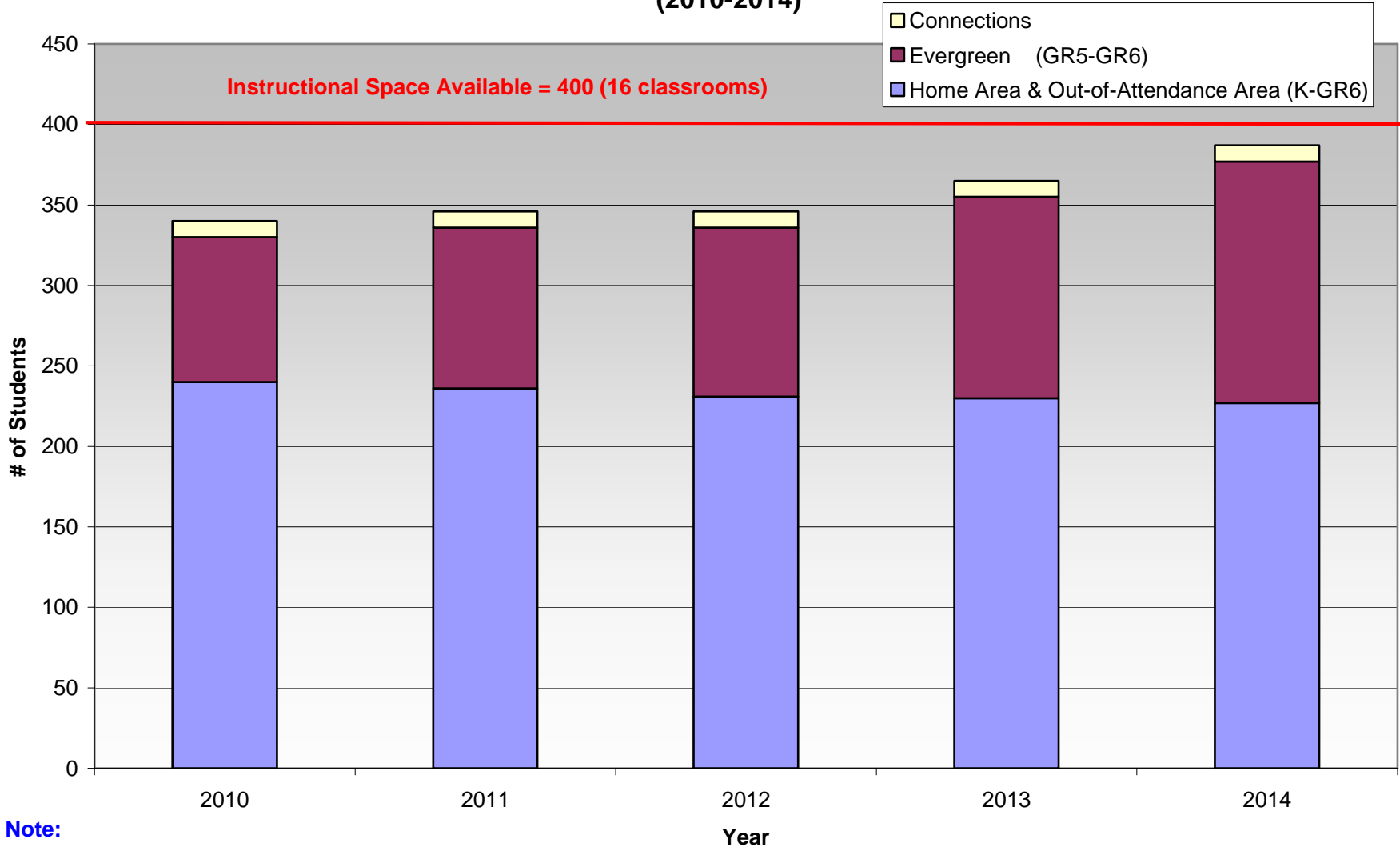
□ GR5-GR9

- Designate students to Woodlands School (GR5-GR6) and Woodman School (GR7-GR9)

OR

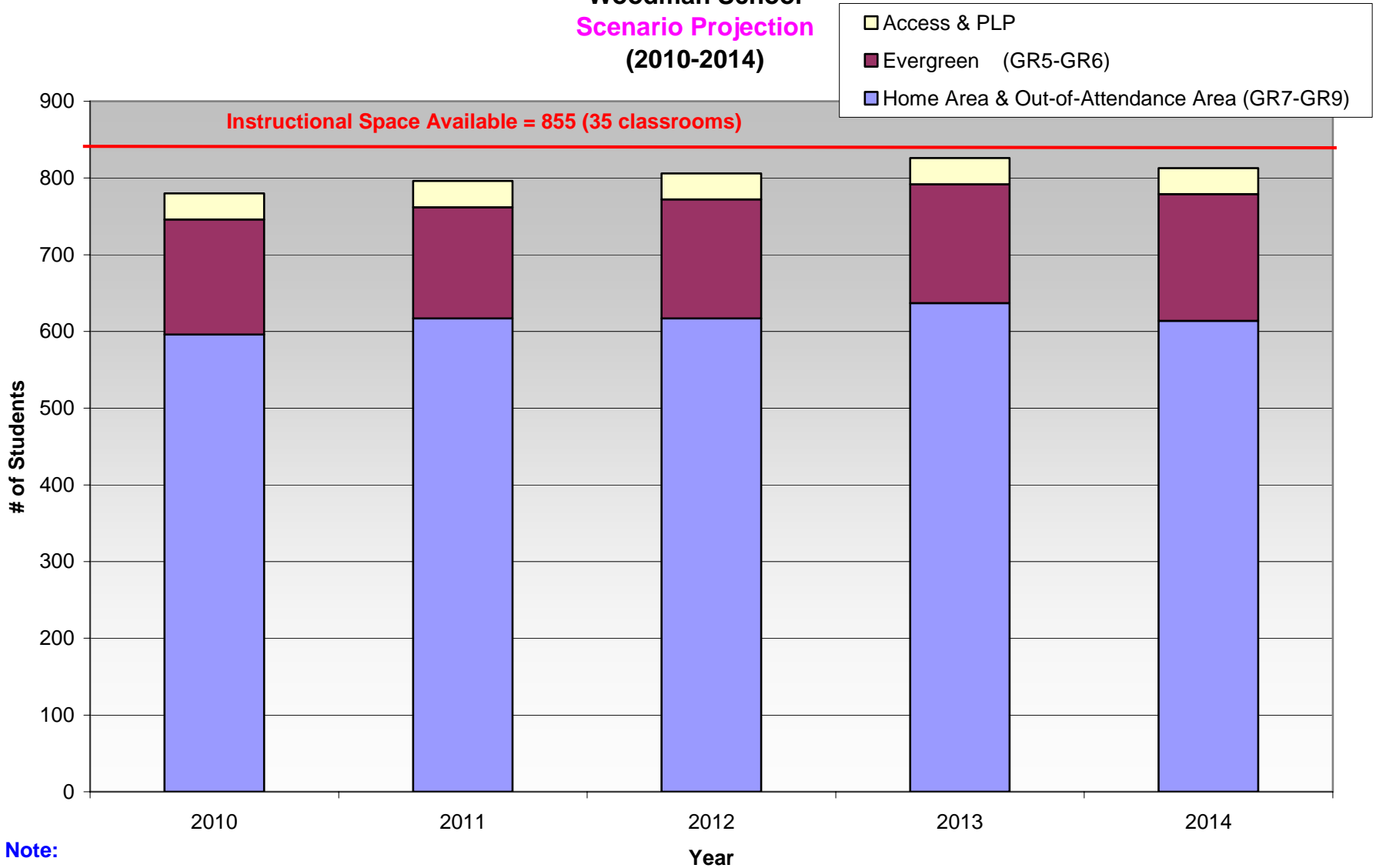
- Designate students to Woodman School (GR5-GR9)

Woodlands School
Scenario Projection
(2010-2014)



- Note:**
- 1. Evergreen Enrolment is for Grade 5 & Grade 6 only
 - 2. Projection assumes no new intake of out-of-attendance area students

Woodman School Scenario Projection (2010-2014)



Note:

- 1. Projection includes PLP and ACCESS Special Education classes
- 2. Projection assumes no new intake of out-of-attendance area students

Community Engagement

What is Public Participation?

- **P2:** any process that involves the public in problem-solving or decision-making (or developing recommendations) & that uses public input to make better decisions
- **Stakeholders:** any individual, group of individuals, organization, or political entity with a stake (or a perceived stake) in the outcome of a decision
- **Public:** those stakeholders who are not the decision-maker(s)

IAP2 Public Participation Spectrum

Developed by the International Association for Public Participation

INCREASING LEVEL OF PUBLIC IMPACT

INFORM	CONSULT	INVOLVE	COLLABORATE	EMPOWER
Public Participation Goal:	Public Participation Goal:	Public Participation Goal:	Public Participation Goal:	Public Participation Goal:
To provide the public with balanced and objective information to assist them in understanding the problem, alternatives, opportunities and/or solutions.	To obtain public feedback on analysis, alternatives and/or decisions.	To work directly with the public throughout the process to ensure that public concerns and aspirations are consistently understood and considered.	To partner with the public in each aspect of the decision including the development of alternatives and the identification of the preferred solution.	To place final decision-making in the hands of the public.
Promise to the Public:	Promise to the Public:	Promise to the Public:	Promise to the Public:	Promise to the Public:
We will keep you informed.	We will keep you informed, listen to and acknowledge concerns and aspirations, and provide feedback on how public input influenced the decision.	We will work with you to ensure that your concerns and aspirations are directly reflected in the alternatives developed and provide feedback on how public input influenced the decision.	We will look to you for direct advice and innovation in formulating solutions and incorporate your advice and recommendations into the decisions to the maximum extent possible.	We will implement what you decide.
Example Techniques to Consider:	Example Techniques to Consider:	Example Techniques to Consider:	Example Techniques to Consider:	Example Techniques to Consider:
<ul style="list-style-type: none"> ● Fact sheets ● Web sites ● Open houses 	<ul style="list-style-type: none"> ● Public comment ● Focus groups ● Surveys ● Public meetings 	<ul style="list-style-type: none"> ● Workshops ● Deliberate polling 	<ul style="list-style-type: none"> ● Citizen Advisory Committees ● Consensus-building ● Participatory decision-making 	<ul style="list-style-type: none"> ● Citizen juries ● Ballots ● Delegated decisions



Why do Public Participation?

- **Effective P2 facilitates understanding**
- **Effective P2 improves decisions**
- **Effective P2 acknowledges the desire of the public to participate in decisions which affect them**



Public Participation at the CBE

- Involvement in a student accommodation project involves a series of increasingly broad meetings to provide information and gather feedback from impacted stakeholders
- Meetings may include:
 - Stakeholder Meetings
 - Focused Conversation/World Cafe
 - Open House

Level of Engagement: *CONSULT*

GOAL

To obtain public feedback on the proposed student accommodation plan and the implementation of the proposed administrative recommendation.

PROMISE TO THE PUBLIC

We will keep you informed, listen to and acknowledge concerns, and be open to feedback regarding the proposed administrative recommendation.



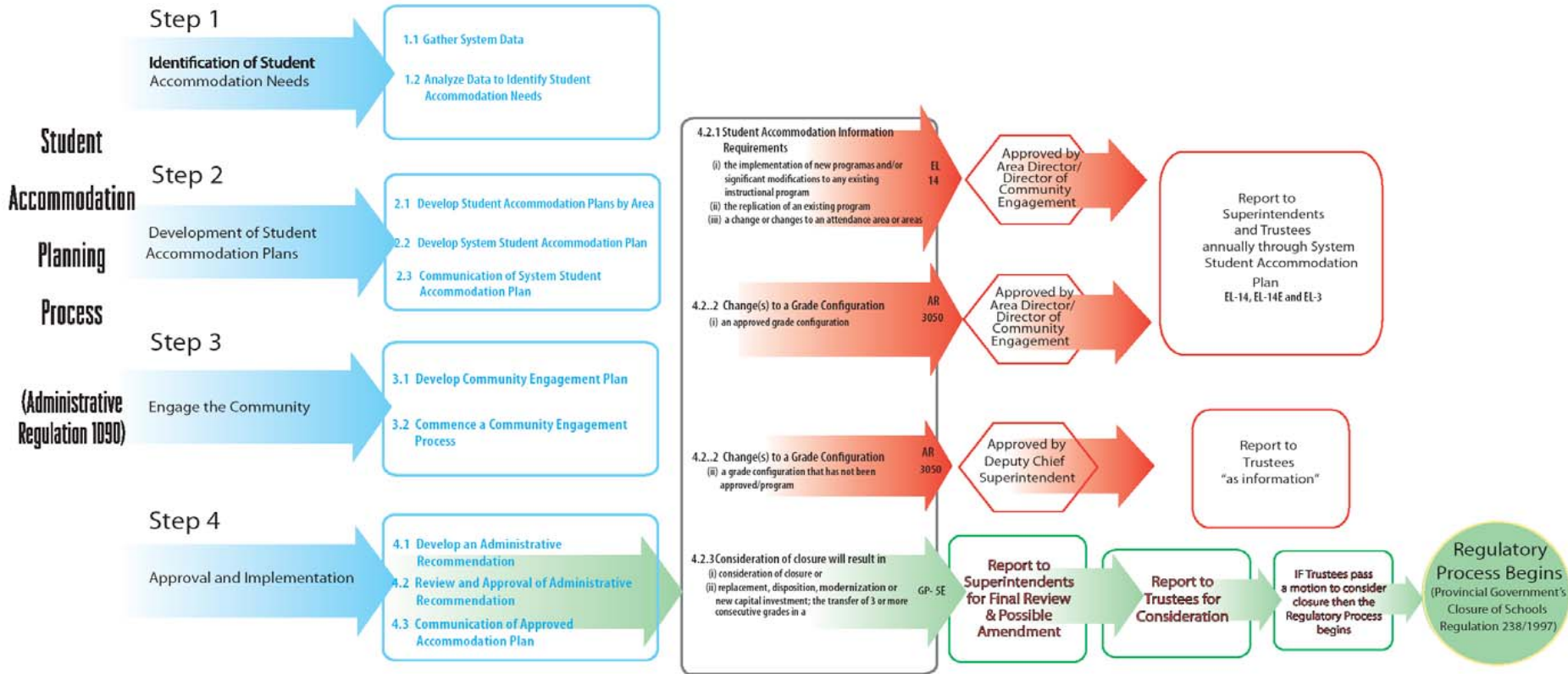
Decision Making

- Any decisions regarding attendance area changes will be made by the Area Director in conjunction with the Director of Community Engagement and Operational Planning.
- Any decisions regarding consideration of closure will be made by the Board of Trustees upon a recommendation from administration.



Decision Making Process

- Administrative Process



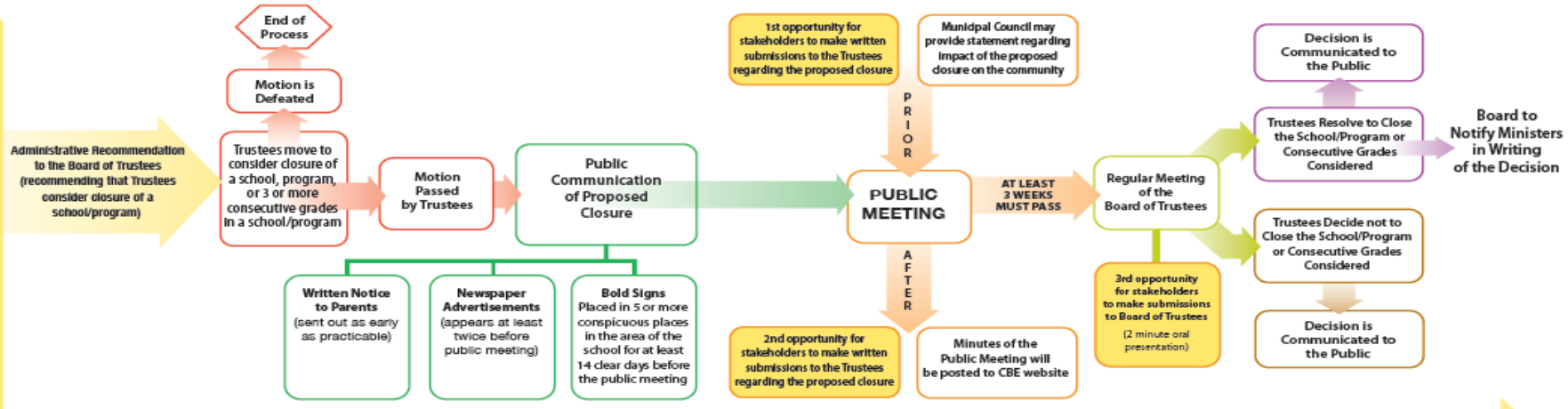


Decision Making Process

- Regulatory Process

PROVINCIAL CLOSURE OF SCHOOLS REGULATORY PROCESS

(Closure of Schools Regulation, Alberta Regulation 238/1997 & Calgary Board of Education's Governance Process SE - Closure of Schools)



SEPTEMBER ALL SCHOOL CLOSURE PROCEDURES SHALL BE INITIATED & COMPLETED WITHIN THE SCHOOL YEAR IN WHICH THE DECISION TO CLOSE IS MADE * **JUNE**

* Minister may extend this timeframe, upon written request.

- Written Notice to Parents shall set out:**
- how the closure would affect the attendance area
 - how the closure would affect attendance at other schools/programs
 - information on the board's long-range capital plan
 - number of students who would need to be relocated as a result of a closure
 - need for, and extent of, busing
 - program implications for other schools & for the students when they are attending other schools/programs
 - educational & financial impact of closing the school/program
 - educational & financial impact if the school/program were to remain open
 - time and location of the public meeting

- Written Notice to Parents may set out:**
- capital needs of the schools/programs that may have increased enrolment as a result of closure
 - possible uses of the school building or space in the school building if the entire school is being closed or 3 or more consecutive grades in the school building are being closed entirely



The Role of a Parent Representative

- Commitment to attend 1-2 meetings
- Provide information to the greater school community
- To gather feedback
- To be open to other voices and perspectives

Proposed Community Engagement Process

- Stakeholder Representative Meeting – Thurs., Nov. 5 at Area V Conf. Rm.
- Open House – Mon., Nov. 16 5:30 – 7:30 at Haysboro Gym
- Stakeholder Representative Meeting (after Open House) - TBD

Thank you

- For more information go to www.cbe.ab.ca
 - *Parents > Community Engagement > Student Accommodation Planning Process > Projects*