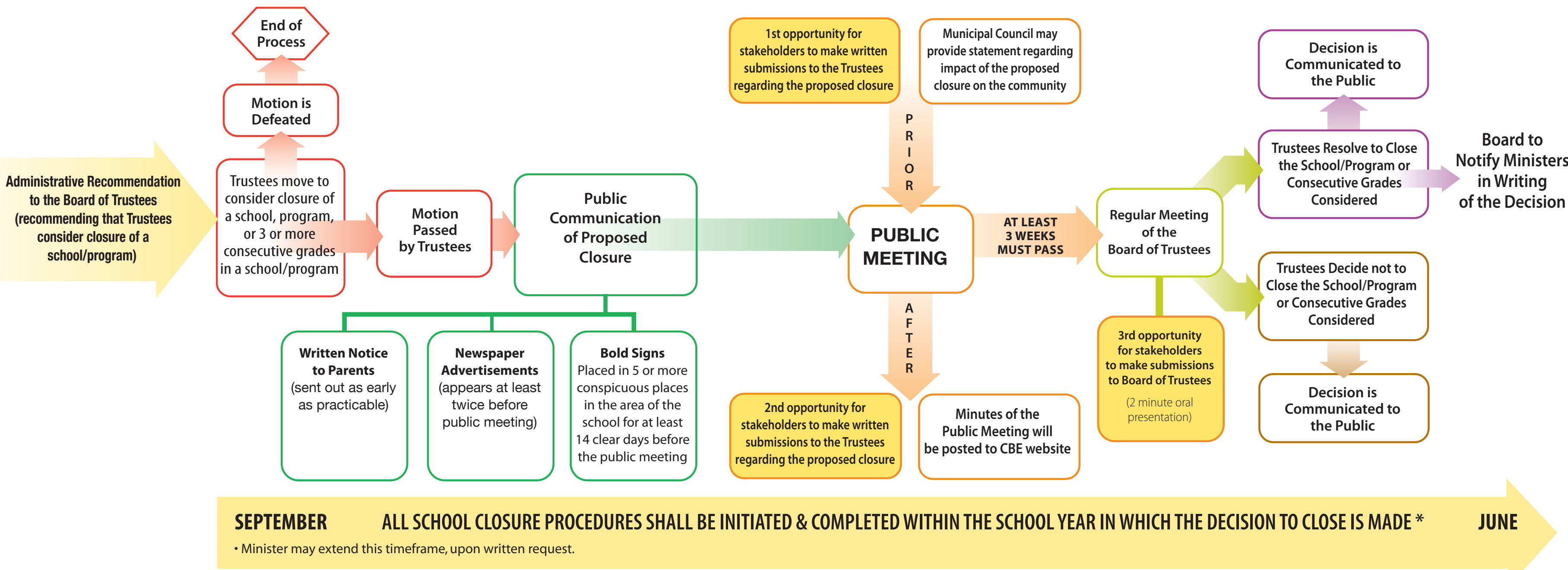


# PROVINCIAL CLOSURE OF SCHOOLS REGULATORY PROCESS

(Closure of Schools Regulation, Alberta Regulation 238/1997 & Calgary Board of Education's Governance Process 5E - Closure of Schools)



Calgary Board of Education  
Produced by  
Department of Community Engagement & Operational Planning and Media Services



- Written Notice to Parents shall set out:**
- how the closure would affect the attendance area
  - how the closure would affect attendance at other schools/programs
  - information on the board's long-range capital plan
  - number of students who would need to be relocated as a result of a closure
  - need for, and extent of, busing
  - program implications for other schools & for the students when they are attending other schools/programs
  - educational & financial impact of closing the school/program
  - educational & financial impact if the school/program were to remain open
  - time and location of the public meeting

- Written Notice to Parents may set out:**
- capital needs of the schools/programs that may have increased enrolment as a result of closure
  - possible uses of the school building or space in the school building if the entire school is being closed or 3 or more consecutive grades in the school building are being closed entirely