

frequently asked questions

February 2014

French Immersion/Spanish Bilingual Programs at Westgate School

The following questions were received from parents over 3 weeks since the announcement to revisit the Westgate School accommodation issue.

1. *What is the process for decision making now?*

Feedback received from January 28, 2014 (the date the appeal response letter was sent home to parents) and February 18, 2014 (the date that the Survey Monkey closes), to be reviewed by administration for a final decision includes:

- survey results,
- yourvoice emails
- feedback collected at the open house
- emails and letters received at Area IV Office, the Chief Superintendent's Office and by the Board of Trustees.

A final decision will consider the guiding principles for student accommodation and reflect as many of the principles as possible. It is anticipated that a decision letter will be issued by the Area IV prior to Spring Break.

2. *What happens if I register my child for French Immersion and she/he doesn't get in?*

If a scenario with a cap on enrolment is chosen for Westgate, and your child is not chosen in the lottery, she/he would not be designated to another French Immersion school. Your only option for French Immersion education within the CBE would be to see if any other French Immersion schools would be able to take your child as an out-of-attendance area student. This would only happen if they have space and if you are able to provide transportation for your child.

3. *What about the right to receive an education in one of Canada's two official languages, as per the Canadian Charter of Rights and Freedoms?*

The right to have your child educated in French is addressed by the availability of the Francophone programming at designated locations throughout the province. This service is provided to all Albertans via the provincially funded Francophone school board. Provision of French Immersion programming is an alternative program at the Calgary Board of Education. <http://www.cscfsa.ab.ca/> The nearest location would be Sainte-Marguerite-Bourgeoys on Richard Road SW.

4. *Could the Spanish program move into Glenmeadows School now that the Arts Charter School program is relocating?*

The Arts Charter School at Glenmeadows School has received funding for modernization of an existing building on the Stampede grounds. This funding announcement was made on February 10, 2014 and completion of the renovation will take time. It is not known at this time whether Glenmeadows School will be returned to the CBE for our use or if the Province will direct the CBE to lease the space to another Charter School in the future. If the space at Glenmeadows were to become available for CBE use it is not anticipated to occur prior to 2016. This accommodation issue requires an immediate solution.

5. *Why did you pick Eugene Coste School, which is so far away?*

There is very limited space in SW Calgary. Eugene Coste is a stand-alone location with space to accommodate all K-6 Spanish Bilingual students. A stand-alone K-6 facility was the preferred solution based on feedback in the engagement process last year.

6. *You said that you were going to check with the province about portables. What happened with that?* During the engagement process last year, the majority of feedback did not support this option due to the already strained use of the Westgate School gym and library. The addition of modular classrooms would still only allow the programs to operate K-4. This would mean Spanish and French grades 5-9 could not be accommodated at Bishop Pinkham School in the long run. For these reasons the CBE did not include a request for 4 modular classrooms at Westgate School in their November 30, 2013 submission to the Province.

7. *Why can't we just cap the school? So many other schools around here are capped.* The CBE is a school system that supports personalized learning and choice for students. Wherever possible expansion and/or relocation of alternative programs to meet demand is preferred over capping of enrolment.

8. *What about Viscount Bennett? It had room for 500+ students from Willow Park this year and is a lot closer than Eugene Coste School.*

Viscount Bennett School was able to be used for students displaced by the fire at Willow Park because this was a short term use. The CBE currently uses space at Viscount Bennett for Chinook Learning. As indicated in the Three Year School Capital Plan, Chinook Learning Services is to be relocated and the plan is to demolish Viscount Bennett. In the short term it is being used for emergency swing space. Therefore Viscount Bennett is not a long term option that would be considered.

9. *What are the reasons Dr. Oakley is not being seriously considered?*

Dr. Oakley is a unique setting for students who require specialized programming which includes the use of breakout rooms and access to numerous internal and external support services. There is also a partnership with the Can-Learn Society who lease office space in a wing of the building. Dr. Oakley has 19 classrooms and instructional space for 475 students. To utilize that space would require significant renovations to revert it back to classroom space. Because of the complexity of this school environment and the services that support it, administration has removed this school as a solution to this accommodation challenge. Utilization in this case is not defined by students/classroom, as is common with all our unique specialized programming settings.



frequently asked questions

January 20, 2014

French Immersion/Spanish Bilingual Programs at Westgate School

Following are some anticipated questions and answers based on the decision to move the Spanish Bilingual Program to Eugene Coste School for September 2014.

1. **Why did you pick a site that is so far away?** There is very limited space in SW Calgary. Eugene Coste is a stand-alone location with space to accommodate all K-6 Spanish Bilingual students. A stand-alone K-6 facility was the preferred solution based on feedback in the engagement process last year.
2. **How long will it take to bus our students?** Transportation will vary depending on where students live. Some will have a longer bus ride, some will have a shorter bus ride than they have this year. Please see map with ride time estimates.
3. **Can we go back to some of the options from last year? Is there any opportunity for us to change this decision?** The opportunity to have feedback into the decision was provided last year during the engagement process. Decisions about student accommodation are linked to each other and create a domino effect. Needs for space are not exclusive to the Westgate School community. With the increase of over 3,000 students into our system this year and projected to continue for the next 3 years, multiple accommodation processes take place simultaneously.

Feedback received last year did not support the scenarios presented and therefore the CBE looked for options that reflected parent desire for:

- K-6 learning continuum,
- keeping Spanish and French together at Bishop Pinkham,
- providing a long term plan.

Pursuing a solution to meet these needs, allowed administration to consider schools presented, such as Rosscarrock, Jennie Elliott and A.E. Cross Schools, as potential solutions for other accommodation challenges in Area IV. Implementation of the decision will be the focus of future parent meetings.

4. **You said that you were going to check with the province about portables. What happened with that?** During the engagement process last year, the majority of feedback did not support this option due to the already strained use of the Westgate School gym and library. The addition of modular classrooms would still only allow the programs to operate K-4. This would mean Spanish and French grades 5-9 could not be accommodated at Bishop Pinkham School in the long run. For these reasons the CBE did not include a request for 4 modular classrooms at Westgate School in their November 30, 2013 submission to the Province.
5. **Why can't we just cap the school? So many other schools around here are capped.** The CBE is a school system that supports personalized learning and choice for students. Wherever possible expansion and/or relocation of alternative programs to meet demand is preferred over capping of enrolment.

6. **Why is it that the Spanish program has to move?** To change French Immersion boundaries to keep Spanish at Westgate would ultimately impact more students city wide. Relocating Spanish Bilingual to Eugene Coste provides the opportunity to address growth of the Spanish Bilingual Program in South Calgary.
7. **What about Viscount Bennett? It had room for 500+ students from Willow Park this year and is a lot closer than Eugene Coste School.** Viscount Bennett School was able to be used for students displaced by the fire at Willow Park because this was a short term use. The CBE currently uses space at Viscount Bennett for Chinook Learning. As indicated in the Three Year School Capital Plan, Chinook Learning Services is to be relocated and the plan is to demolish Viscount Bennett. In the short term it is being used for emergency swing space. Therefore Viscount Bennett is not a long term option that would be considered.
8. **Will the staff be going with the program? Teachers, support staff, administration?** Where possible Spanish teaching staff and resources will move with the program. The new principal will be hired based on CBE staffing processes.
9. **What about resources from the school? i.e.) Smartboards, computers, furniture, library collections, phys. ed. equipment, music supplies.** Some resources will move and some will stay. These decisions will be part of the work that school administration will do this spring, and will be based on the number of students anticipated to be in each program.
10. **Will there be any funds to help support the move?** Schools receive funding based on the number of students. Eugene Coste School may receive additional funds for expansion depending on the level of growth of the program.
11. **What will the school hours be?** The CBE is flexible with a start time for the program and is asking for feedback from parents.
12. **Will there be any kind of child care provided on site? Before and after school care, care for children in half day kindergarten etc?** It is the responsibility of the principal in consultation with their community to ensure any childcare provider meets CBE and Provincial standards. CBE believes there will be space for on-site childcare at Eugene Coste and there are service providers who have already expressed an interest in establishing a program at Eugene Coste. Although no final decisions have been made, we believe there will be the opportunity for parents to access on-site childcare at the school. If any parent know of any providers who may be interested in having a program at Eugene Coste, please have them contact Kelly Christopher, principal at Westgate School.



13. **How do I register my child for Spanish Bilingual at Eugene Coste**

School? If your child is already attending Westgate School, his or her registration will automatically be forwarded to Eugene Coste. All new students may register at Westgate beginning on January 13, 2014. These registrations will also be forwarded to Eugene Coste once the appropriate staff is in place to receive them.

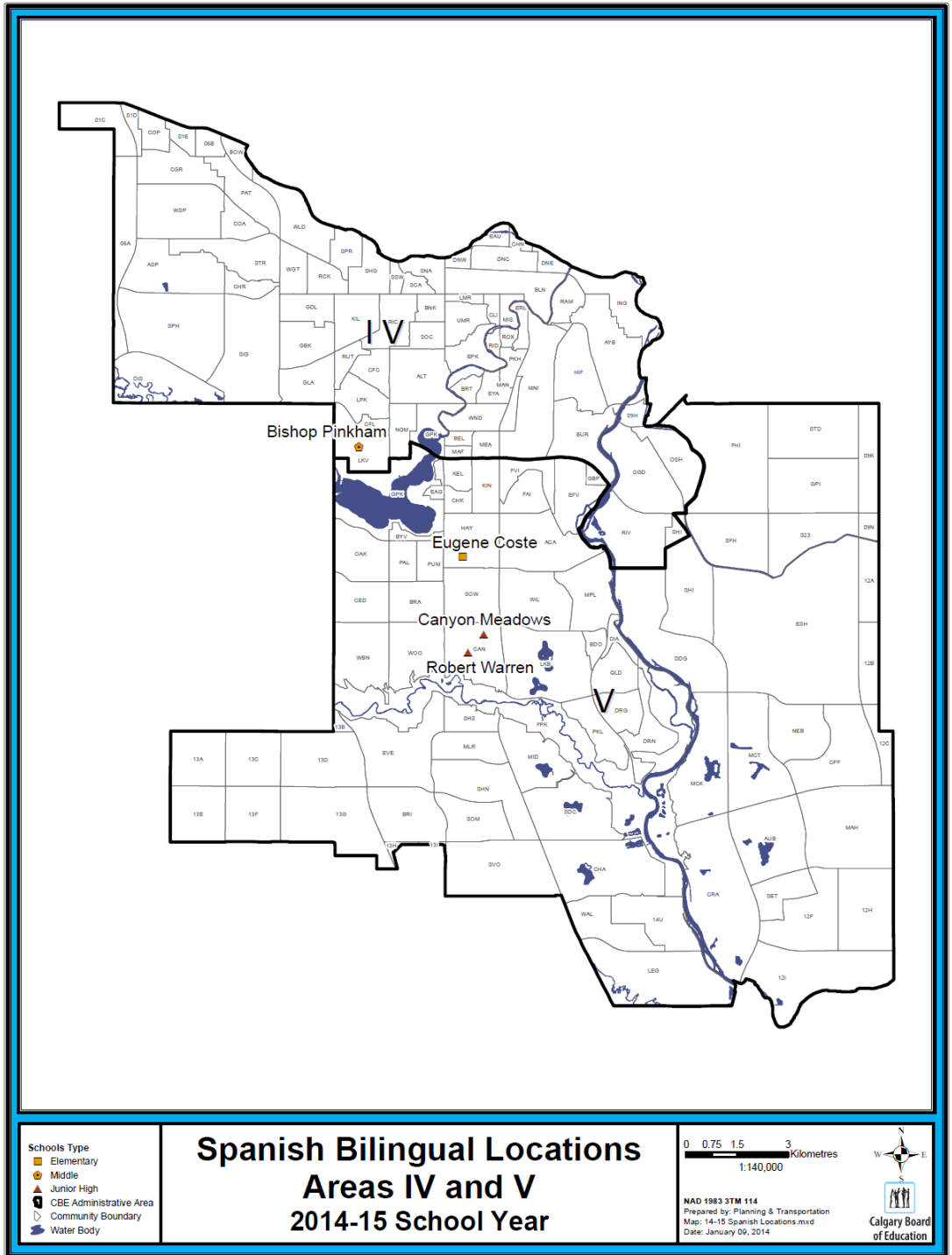
14. **Will we be accommodated in our community school if we decide not to go to Eugene Coste?** Some schools in Area IV are experiencing enrolment pressures and are not able to accept all students in their designated area. In these cases designated overflow schools are identified and standard lottery processes have been established to determine admittance. Please review this information:

<http://www.cbe.ab.ca/new/news2013-14/20130827-process-for-accepting-students.asp>

15. **When do we have to apply if we want to go attend our community school?**

Registration for all grades starts on January 13, 2014.





questions & answers

January 2014

French Immersion/Spanish Bilingual Programs at Westgate School

Following are some anticipated questions and answers based on the decision to move the Spanish Bilingual Program to Eugene Coste School for September 2014.

1. **Where is Eugene Coste?** In the community of Haysboro at 10 Hillgrove Cr. SW, please see map at the back of this document.
2. **Why did you pick a site that is so far away?** There is very limited space in SW Calgary. Eugene Coste is a stand-alone location with space to accommodate all K-6 Spanish Bilingual students. A stand-alone K-6 facility was the preferred solution based on feedback in the engagement process last year.
3. **How long will it take to bus our students?** Transportation will vary depending on where students live. Some will have a longer bus ride, some will have a shorter bus ride than they have this year.
4. **Can we go back to some of the options from last year? Is there any opportunity for us to change this decision?** The opportunity to have feedback into the decision was provided last year during the engagement process. Decisions about student accommodation are linked to each other and create a domino effect. Needs for space are not exclusive to the Westgate School community. With the increase of over 3,000 students into our system this year and projected to continue for the next 3 years, multiple accommodation processes take place simultaneously.

Feedback received last year did not support the scenarios presented and therefore the CBE looked for options that reflected parent desire for:

- K-6 learning continuum,
- keeping Spanish and French together at Bishop Pinkham,
- providing a long term plan.

Pursuing a solution to meet these needs, allowed administration to consider schools presented, such as Rosscarrock, Jennie Elliott and A.E. Cross Schools, as potential solutions for other accommodation challenges in Area IV. Implementation of the decision will be the focus of future parent meetings.

5. **You said that you were going to check with the province about portables. What happened with that?** During the engagement process last year, the majority of feedback did not support this option due to the already strained use of the Westgate School gym and library. The addition of modular classrooms would still only allow the programs to operate K-4. This would mean Spanish and French grades 5-9 could not be accommodated at Bishop Pinkham School in the long run. For these reasons the CBE did not include a request for 4 modular classrooms at Westgate School in their November 30, 2013 submission to the Province.

6. **Why can't we just cap the school? So many other schools around here are capped.** The CBE is a school system that supports personalized learning and choice for students. Wherever possible expansion and/or relocation of alternative programs to meet demand is preferred over capping of enrolment.
7. **Why is it that the Spanish program has to move?** To change French Immersion boundaries to keep Spanish at Westgate would ultimately impact more students city wide. Relocating Spanish Bilingual to Eugene Coste provides the opportunity to address growth of the Spanish Bilingual Program in South Calgary.
8. **We know the school has been empty. What kind of shape is it in anyway? When will we be able to go and see the school?** Eugene Coste School has been fully functional as a school temporarily accommodating Elbow Park students that were displaced due to the flood. The school will be ready to accommodate the Spanish Bilingual program for September 2014. Parents and students are able to see the school on **January 20th, 2014**. We anticipate there will be other opportunities for parents and students to see the school when transition planning begins in the spring.
9. **What about Viscount Bennett? It had room for 500+ students from Willow Park this year and is a lot closer than Eugene Coste School.** Viscount Bennett School was able to be used for students displaced by the fire at Willow Park because this was a short term use. The CBE currently uses space at Viscount Bennett for Chinook Learning and is in the process of creating a new vision for Chinook Learning. The building requires modernization and the cost of this modernization exceeds 65% of the value of the building and therefore would not meet funding approval guidelines set out by the Province. Therefore Viscount Bennett is not a long term option that would be considered.
10. **Will the staff be going with the program? Teachers, support staff, administration?** Where possible Spanish teaching staff and resources will move with the program. The new principal will be hired based on CBE staffing processes.
11. **What about resources from the school? i.e.) Smartboards, computers, furniture, library collections, phys. ed. equipment, music supplies.** Some resources will move and some will stay. These decisions will be part of the work that school administration will do this spring, and will be based on the number of students anticipated to be in each program.
12. **Will there be any funds to help support the move?** Schools receive funding based on the number of students. Eugene Coste School may receive additional funds for expansion depending on the level of growth of the program.
13. **What will the school hours be?** To be determined as part of the transition plan with the new administration.

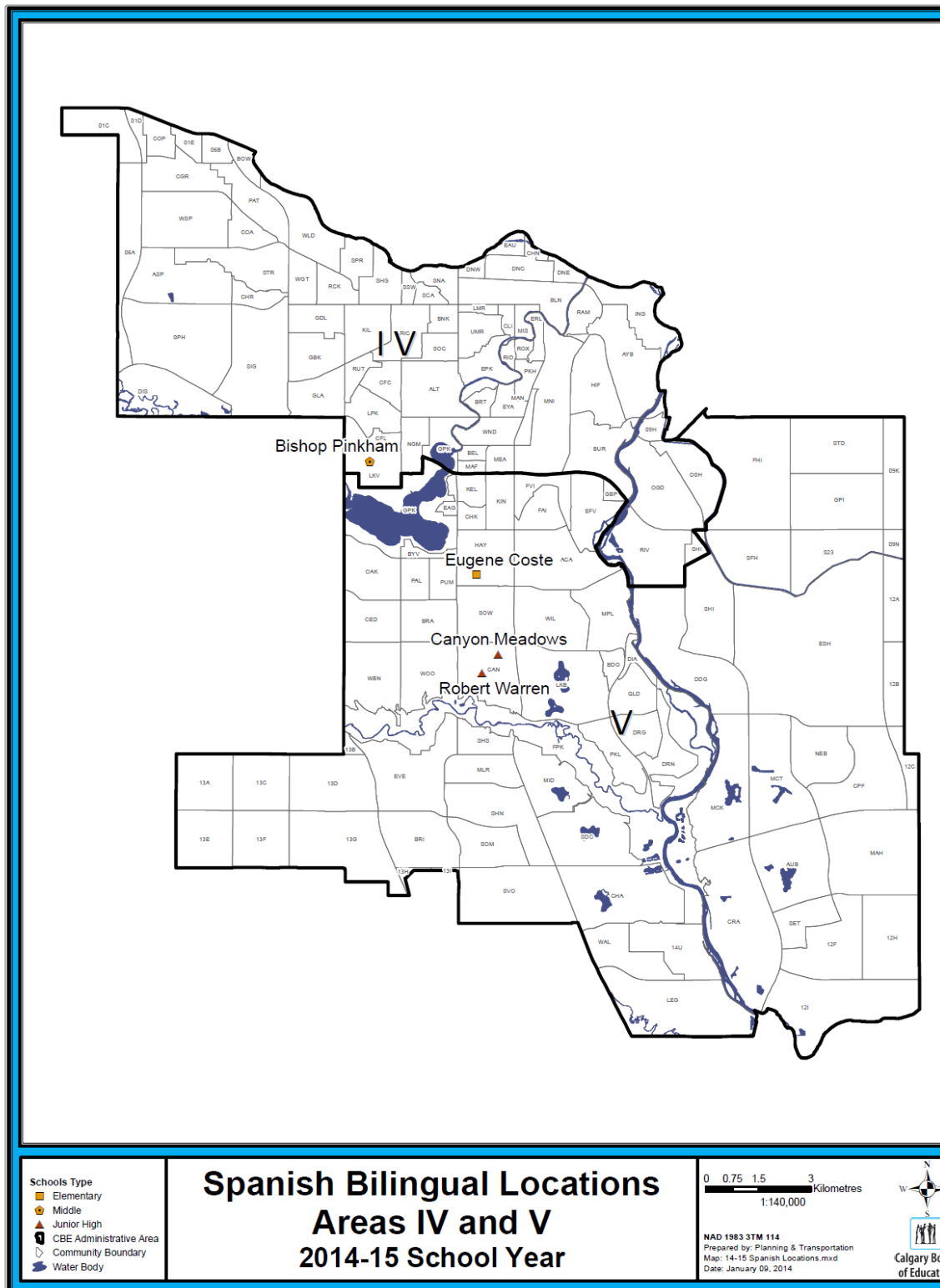
14. **Will there be any kind of child care provided on site? Before and after school care, care for children in half day kindergarten etc?** School administration determines with the Leasing Department if space is available. It is the responsibility of the principal in consultation with their community to ensure any childcare provider meets CBE and Provincial standards.

15. **How do I register my child for Spanish Bilingual at Eugene Coste School?** If your child is already attending Westgate School, his or her registration will automatically be forwarded to Eugene Coste. All new students may register at Westgate beginning on January 13, 2014. These registrations will also be forwarded to Eugene Coste once the appropriate staff is in place to receive them.

16. **Will we be accommodated in our community school if we decide not to go to Eugene Coste?** Some schools in Area IV are experiencing enrolment pressures and are not able to accept all students in their designated area. In these cases designated overflow schools are identified and standard lottery processes have been established to determine admittance. Please review this information:

<http://www.cbe.ab.ca/new/news2013-14/20130827-process-for-accepting-students.asp>

17. **When do we have to apply if we want to go attend our community school?** Registration for all grades starts on January 13, 2014.



frequently asked questions

April 2013

French Immersion/Spanish Bilingual Programs at Westgate School

The following questions were received from parents over the past 4 months during the engagement process.

1. *What are the plans to help my child transition to grade 5 at Bishop Pinkham?*

Administration at both schools are working together to make this transition as smooth as possible. In the coming weeks there will be multiple opportunities for parents and students to get to know the staff and to learn more about the school. This information will be provided by the schools.

On **Thursday, May 9**, all students from grades 4 and 5 will be visiting Bishop Pinkham for a student orientation. This will be followed up by an open house for parents and students in the evening. Parents from Westgate are invited to come and meet with the administration team from 5:30-6:30pm to discuss the transition plans for next year. The general open house will then occur from 6:30-8:30pm.

2. *What about child care for my grade 5 student?*

Although before and after school care is a parent responsibility schools will do their best to assist parents by communicating the options available in their communities. Bishop Pinkham is currently exploring options for having a before and after school care provider to be located within the school. There may be opportunities, dependent on future bussing arrangements, for some students to continue at the Westgate community program.

3. *Does this mean that our children will not attend A.E. Cross for middle school?*

Students in the Spanish Bilingual program who are at Bishop Pinkham in September of 2013 will continue at Bishop Pinkham School until 2015. As we work to determine the best location for the Spanish Bilingual Program A.E. Cross School may be part of that solution.

4. *Will the Spanish Bilingual program go to Jennie Elliott School in 2014?*

Over the next 12 months the Area IV Office and the Planning Department will work together to find a long term solution. This may mean bringing a new location into the plan or working from the current scenarios as our options become clearer.

5. *What will things look like at Westgate next year?*

Things at Westgate will look very similar to the way that they look this year, except that students will be in grades kindergarten to grade 4 rather than kindergarten to grade 5.

6. *Will changes be made at Bishop Pinkham to accommodate the younger children? i.e. Playground, structure of the day, lockers?*
There is a playground on the East end of the property. The school will ensure that elementary students will get recess and will also have 2 separate lunch hours; one lunch hour for grades 5 and 6s and another for grades 7-9. There are not enough lockers to accommodate all of the students. Elementary students will have a separate space for their coats and bags inside the classrooms.
7. *What about the grade 5 teachers from Westgate, could they move to Bishop Pinkham?*
Three grade 5 teachers from Westgate will be moving to Bishop Pinkham beginning in the 2013-2014 school year. It is possible a fourth teacher could go to Bishop Pinkham, but this will depend on what happens in Spring Staffing.
8. *Is it true that students at Bishop Pinkham are able to leave the school grounds at lunch?*
Grade 7-9 students are able to leave the school grounds at lunch. This does not apply to grade 5 and 6 students who are supervised during the lunch time.
9. *What opportunities will elementary students have to get involved with extracurricular activities?*
Students will be invited to participate in a number of extracurricular activities that will occur throughout the year. The school has an ongoing intramural program and various clubs that are open to all students. As well, students will have opportunities to participate on some of the sports teams.
10. *Where will the grade 5 and 6s be located?*
It is anticipated that the grade 5 and 6 classrooms will be in the same hallway of the school. Students will have a core group of teachers who will be a part of the grade teams and work to support students in their learning environment.
11. *Will bussing be provided?*
Bussing will be available for students who do not live within the walk zone. Bussing application forms will be available at the schools or on the CBE website in early May.

12. How can I get involved in the transition planning?

Parents are invited to attend monthly School Council meetings. Information regarding the meeting times and dates can be found on the school website. Also, there will be an invitation for parents to be part of a steering committee to discuss future planning. An email will be sent out to the Westgate parent community in mid-May.

13. How can I learn more about what is happening at Bishop Pinkham?

Bishop Pinkham has a number of sources of information for parents; to find out more about Bishop Pinkham, parents are encouraged to access the following:

- **School webpage-** cbe.ab.ca/b645
- **Principal Blog -** <http://directricebp.weebly.com/>
- **Facebook page-** bit.ly/bishoppinkhamfacebook
- **Twitter account -** @bpbulletin

As well, parents are encouraged to contact Bishop Pinkham directly should they have any questions and concerns by e-mail [bishoppinkham@cbe.ab.ca] or to call the office [403 777-7840 ext. 0].

Questions & Answers from Feedback Received via THOUGHTstream, YourVoice & emails

Presented at February 27, 2013 Open House

Can Jennie Elliott handle the extra students?

- Jennie Elliott has space for the Spanish program into the future. The TASC class may need to be relocated at some point in the future. All system classes are reviewed yearly to determine the best location and placement for the students who need to be served. Map Attachment I and Graph Attachment II

Why are we not using Rosscarrock School? They have lots of space for the Spanish Bilingual program.

- Rosscarrock School could provide six classrooms. These classrooms could be used for Kindergarten French and Spanish (scenario B). Although they could also be used for a second Spanish Bilingual k-4 site the location is within blocks of Westgate School. Please see the communities and number of students who are in proximity to Jennie Elliott.

Will the addition of the Spanish program to Jennie Elliott dilute resources at the school?

- Additional funding is provided for new program start up and annual funding is allocated on a per pupil basis.

Could Spanish open with K-4 at Jennie Elliott? We want to keep our kids together.

- If there was a large enough cohort of students in grade 2 and 3 we may consider opening more grades. An expression of interest would be held to determine numbers.

What about class sizes at Jennie Elliott?

- Class size is determined using a ratio of certificated staff to students, not by the number of students in a classroom. It is up to the principal to determine grade configurations, numbers of students assigned to teachers, and use of space for instruction.
- It may no longer be possible to have students in separate groupings of 17-18 in one classroom space.
 - This is typical of many CBE schools where pupil teacher ratios are achieved in a variety of educationally appropriate ways.

How many of this year's Spanish kindergarten students have a sibling who would stay at Westgate School if a new program started at Jennie Elliott for 2013?

- There are 5 students in kindergarten this year who would be designated to Jennie Elliot and who have an older sibling that is at Westgate School. If a 2nd K-GR1 Spanish program were to start at Jennie Elliott for 2013, these 5 students would be designated to the new school and their siblings would remain at Westgate.

It has come to our attention that the Spanish Immersion parents are opposed to the program moving to Jennie Elliott School. Why was it still considered if this is the case?

- Not all scenarios involve Jennie Elliott.
- No decision has been made at this time.
- All feedback will be reviewed prior to a decision.

Would you explain how the addition of Spanish at Jennie Elliott School meets the CBE Guiding Principles (as per the presentation package February 12, 2013)?

- For each individual family different principles apply or are most important. What works for one family may not work for others. It is a challenge to determine the best solution for the largest number of people that meets all values and principles.

How does the CBE project student enrolment? How accurate have projections been in the past?

Enrolment Projections

Enrolment projections guide a lot of the work we do at the Calgary Board of Education. These numbers impact very important decisions regarding transportation, student accommodation, facility maintenance and capital planning. A wide range of factors impact enrolment projections and these factors must be constantly monitored to ensure our data is accurate, current and relevant. Determining trends and identifying areas of growth/decline not only requires precision and expertise but ensures that we are well-equipped to serve the needs of our students, parents, and communities. We take our data collection and analysis process very seriously, and hope the information provided here will help clarify the depth and detail involved in producing CBE's enrolment projections.

What steps are undertaken to provide accurate enrolment projections or to provide a competent demographic study?

Historical Enrolment Data:

10 years of grade-by-grade enrolment data is collected for each school. Although 10 years is minimal, 15 years or more of historical data is analyzed when more complicated forecasting is required.

City of Calgary Census Data:

To determine future Kindergarten and grade 1 classes, accurate birth data is necessary. Census data is collected in April of each year and updated on an annual basis. 5 years of historical birth data is collected for the system as well as each elementary school attendance area. For communities that are growing quickly, birth data is adjusted to reflect current growth trends.

Population and Housing Construction:

The City of Calgary provides the following on an annual basis which is used in the enrolment projection process:

- population by community
- population comparisons
- type of housing by community
- inventory of the residential land supply by sector in the suburban areas of Calgary
- current development activity around the city, sector and community
- forecast of housing and residential land supply

The number of children likely to come into a community is estimated using housing and population statistics. The estimates are obtained according to grade configurations to help forecast the impact on elementary, middle, junior high and senior high schools.

How is all of this data analyzed in coming up with enrolment projections?

There are numerous enrolment projection methods, for example, cohort survival ratio, modified regression technique, dwelling unit multiplier technique and population ratio technique. The most popular method is the cohort survival ratio. This method assumes that the rate of progression from one grade to the next in the future will be consistent with rates of progression in previous years. This method is currently used to prepare enrolment projections for the system and by school.

How Accurate are Projections

On a system basis, over the past ten years, enrolment projections for the district have been between 98% and 99% accurate.

Where do the majority of Westgate students live?

- See separate attachment

Why do all scenarios have grade 5 moving to a middle school? Parents clearly stated that was not their preference at other meetings.

- Westgate School would have the space to accommodate one of the programs k-6. In order to accommodate k-6 the other program would need to be housed in multiple locations because it requires a school with approximately 525-550 student spaces. There is no other school available with that amount of space in the general area.

Can the current grade 6 and 7 Spanish finish out their middle school at Bishop Pinkham?

- Delaying the move of Spanish students until September 2015 is possible, but would mean that current grade 6 students would need to relocate for their grade 9 year. It is not possible to delay the move to 2016. For September of 2015 students in grades 5-9 would all be attending at A.E. Cross School. This would allow for a larger cohort of students to move simultaneously, but would also mean that a larger cohort of students would be disrupted.

Will the English Program at Jennie Elliott be affected? What about our before and after school program, the art and music rooms, the library and gym and other shared spaces?

- The regular program at Jennie Elliott will continue to serve the Lakeview, North Glenmore Park and Discovery Ridge residential districts. School administration is responsible for allocation of space and human resources within the school.
- Any increase in school population whether it comes from a new program or additional students in the community, results in the need for administration to make the best use of space.
- Many before and after school programs run in full schools without having fulltime use of a classroom.

How will the resources for the Spanish program be split if there is a new program at Jennie Elliott?

- Whenever a new alternative program starts, funds are allocated centrally to provide resources for the program. This does not affect funding or materials of existing programs.

Is the plan for English kids to have junior high from 7-9, but language program kids 5-9?

- Yes, Bishop Pinkham and A.E. Cross will both remain Grade 7-9 for the regular program.

Is there room for modular classrooms at Westgate?

- The Westgate School site has space for four modular classrooms, however the funding for modular classrooms is provided and determined by the provincial government. To date we have no funding approval for modular classrooms for the 2013 school year.

How will our kids be integrated into the new schools?

- Once a decision has been made schools will begin to work on transition plans for students which will include tours of the school, information on the option programs offered, etc.

How will the grade 5s be integrated into the new location?

- School administration will work together to determine a plan for transition and integration. They will consult with students and parents to provide a positive experience.

How will grades 5 and 6 look different from junior high?

- Please see the information on Middle Schools.

Why not create a new Spanish program in an empty or nearly empty school, keeping the current boundaries?

- There is currently no school building in Area IV that could accommodate the entire program.

Will staff from Westgate move with the students?

- Staff will be made aware of openings that result from movement of students. When a whole program in a school moves, staff moves with them. If only a grade moves, staff usually has the opportunity to move with the grade.

Who will be educating the kids?

- Teachers will be hired based on current staffing processes. Your child may have a teacher from their previous school, or they may have another teacher that has chosen the new location.

What are the reasons Dr. Oakley is not being seriously considered?

- Dr. Oakley is a unique setting for students that require specialized programming which includes the use of breakout rooms and access to numerous internal and external support services. There is also a partnership with the Can-Learn Society who lease office space in a wing of the building. To utilize that space would require significant renovations to revert it back to classroom space. Because of the complexity of this school environment and the services that support it, administration has removed this school as a solution to this accommodation challenge. Utilization in this case is not defined by students/classroom, as is common with all our unique specialized programming settings.

Why will the CBE not just cap the Spanish Bilingual program as in other parts of Calgary?

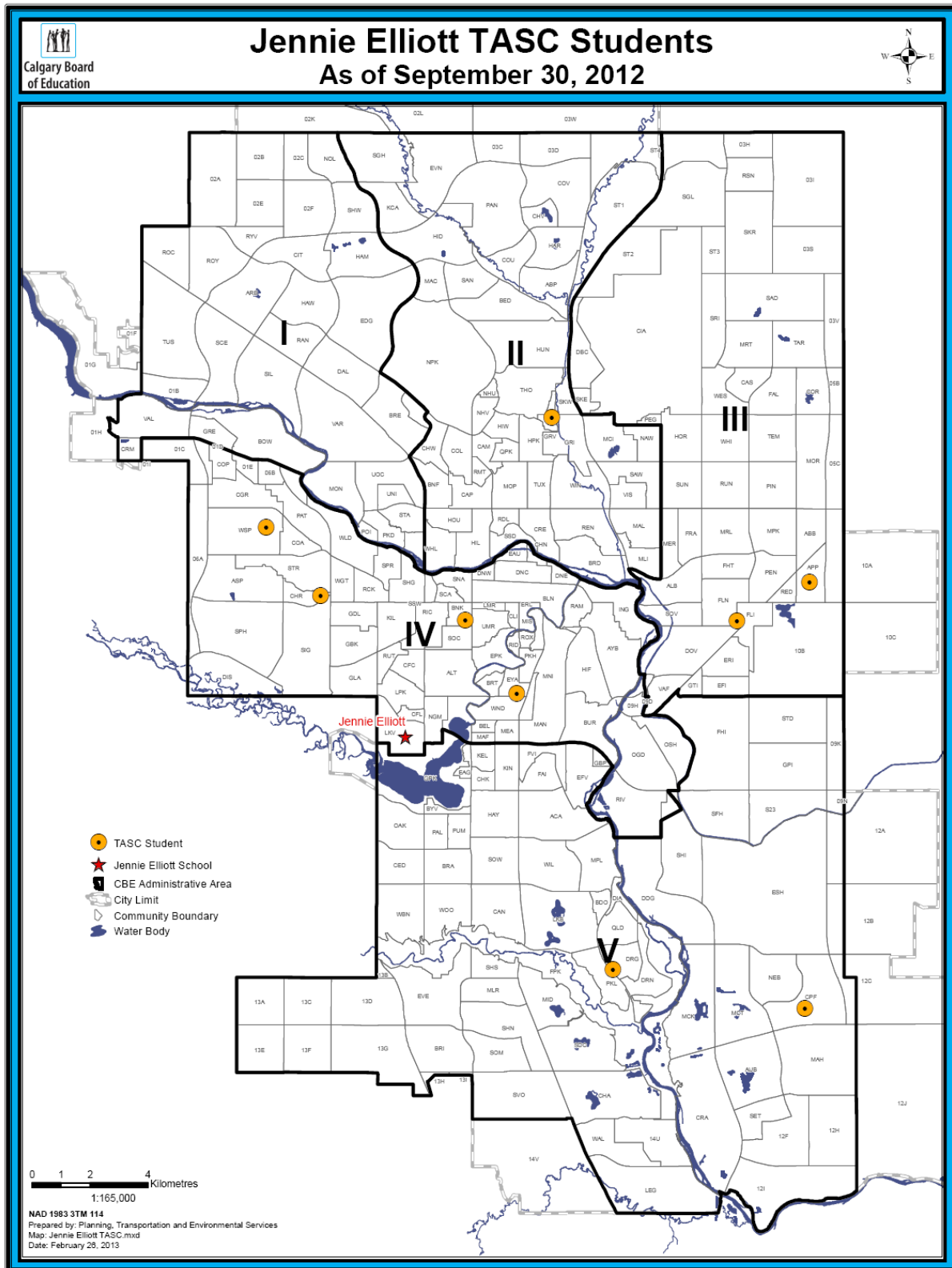
- The CBE attempts to provide immersion and bilingual programming to all interested families. Currently no language programs are capped and we are opening a new Spanish and Mandarin site in the north for 2014 to meet the demand.

Will there be additional buses and enough space for loading zones at Jennie Elliott School? Will the English program and Spanish program morning starts and dismissals be different?

- Start and end times will be the same for all students. Bus routes will be created to serve those families who submit request for charter transportation. It is anticipated that there may be an additional one or two buses. Transportation and the school principal work together to determine appropriate loading zones.
- Some buses will transport students in the regular program and the Spanish program, i.e. Discovery Ridge.

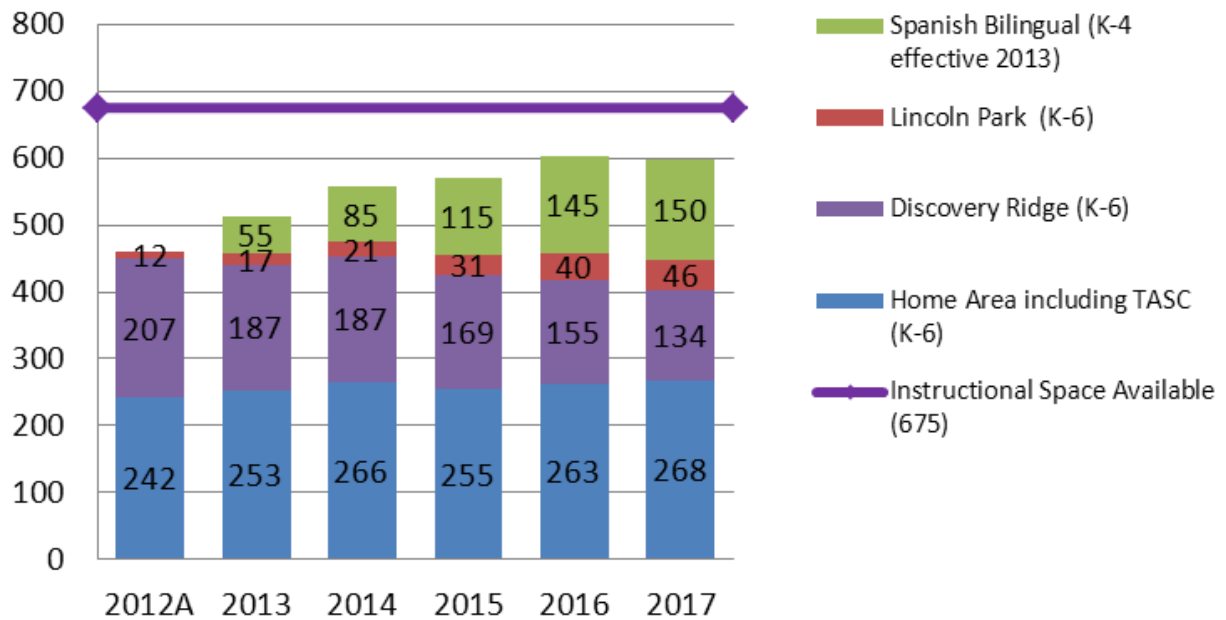
If a new program opens at Jennie Elliott could Bishop Pinkham school accommodate 5-9 for Spanish Bilingual and move the French Immersion 5-9 to A.E. Cross?

- Only Bishop Pinkham can accommodate French Immersion into the future. The late French immersion program starting in Grade 7 increases enrolment at Bishop Pinkham by an additional 30 students each year in Grade 7. This means that French Immersion requires approximately 90 spaces more than Spanish Bilingual and these numbers cannot be accommodated at A.E. Cross.



Jennie Elliott School - Proposed Scenario C

Open a 2nd Spanish Bilingual Site in 2013



Notes:

1. Projections assume a 2nd Spanish Bilingual site opens for K-GR1 for September 2013

SUBJECT TO REVIEW AND UPDATE