

report to  
Board of Trustees

**2024-2025 School Enrolment Report**

Date	December 17, 2024
Meeting Type	Regular Meeting, Public Agenda
To	Board of Trustees
From	Joanne Pitman Chief Superintendent of Schools
Purpose	Information
Originator	Dany Breton, Superintendent, Facilities & Environmental Services
Governance Policy Reference	Operational Expectations: OE-7: Communication with and Support for the Board OE-9: Facilities
Resource Person(s)	Catherine Ford, Director, Planning Jeff Quigley, Manager, Planning Sherri Lambourne, Manager, Real Estate and Leasing Heather Kirkwood, Manager, Business Administration, School Improvement Shay Khan, Manager Revenue and Treasury Tanya Scanga, Director Corporate Financial Services Sandra Pearce, Admissions Coordinator, CBE Welcome Centre

1 | Recommendation

This report is being provided for information to the Board of Trustees. No decision is required.

2 | Issue

Each year in late November or early December, a School Enrolment Report is presented to the Board of Trustees for information.



### 3 | Background

---

The purpose of the report is to provide a snapshot of the end-September 2024 enrolment data for all CBE schools and programs. The CBE uses this information to prepare key documents such as the annual Three-Year School Capital Plan, which provides an updated analysis of projected enrolment growth and population trends.

For many years, the CBE relied on the City of Calgary's annual Civic Census data as the main source for population and demographic information to provide context for this report. The City of Calgary's census program was discontinued in 2019. *The Calgary and Region Economic Outlook 2024-2029: Fall 2024 update* document is now the only City data that informs this report.

Several attachments are included as part of the School Enrolment Report, which provide the following information:

- The number of students enrolled in each school, by grade and program, including alternative programs, classes for students with complex learning needs, and the number of out-of-attendance area students as of end September 2024; and
- The provincial capacity of schools, including the associated number of modular classrooms, and utilization rate of each school building; and
- A list of the leases and the amount of space leased for each building.

It is important to note that the School Enrolment Report does not provide financial data or information on class size within schools. School budgets are adjusted during the school year to allocate resources based on equity considerations, complexity, and other additional factors that are unique to each school.

### 4 | Analysis

---

#### City of Calgary's Population

The City of Calgary estimates that 67,000 people moved to Calgary in 2023. This is 48,000 more people than in 2022. Between April 2022 and April 2023, the total population grew by 5.6% to an estimated 1,422,800 people.

Calgary's population is forecast to be 1,491,900 in 2024 – an increase of approximately 69,100 people, or 4.9 per cent, from the year before.

Net migration continues to drive population growth accounting for 88.2 per cent of the total increase (61,000 people). Natural increase, due to the difference between births and deaths, added an additional 8,100 to the Calgary population in 2024. The primary school age population (6-17 years) grew by 10,600 people between 2022 and 2023 and was projected to grow by a further 8,800 people to 2024.

Calgary's population grew by 25% between 2013 and 2023, faster than any other major Canadian city over this period. The trend is expected to continue in 2024.

More information on the City of Calgary's outlook is available on the City of Calgary website [The Calgary and Region Economic Outlook 2024-2029: Fall 2023 update.](#)

## Enrolment Trends-Calgary Board of Education

Graph 1 shows annual year-over-year changes in student enrolment. For 10 consecutive years between 2009 and 2019, enrolment grew each year. A distinctive dip occurred during the 2020-21 school year, when enrolment dropped by 3,168 students, or 2.5 per cent. However, a sharp increase was realized between 2021 and 2023.

Between end-September 2023 and end-September 2024, enrolment increased by 4,158 students, or 3.0 per cent. Although this enrolment increase is lower than the 7,029 student increase last year, it is still much higher than the average year-over-year increases of 2,300 students or 2.1 per cent that the CBE experienced between 2010 and 2019. In fact, between end-September 2021 and end-September 2024, enrolment at CBE has increased by just over 17,000 students.

Graph 1: CBE Annual Enrolment Change (1982-2024)

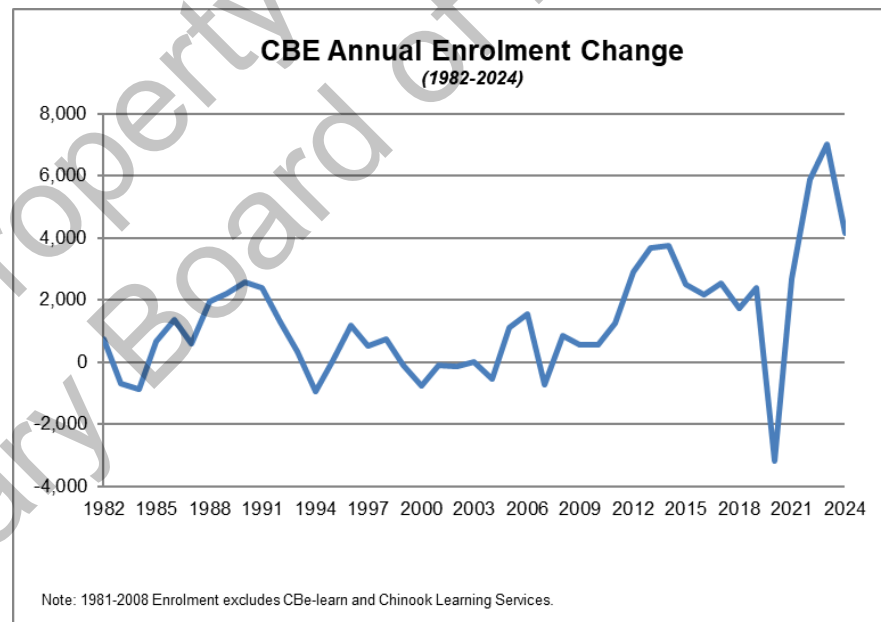


Table 1 below compares student enrolment counts between end-September 2023 and end-September 2024.

- Enrolment increases occurred in each division, with the largest increases seen in Divisions I (Gr 1-3) and IV (Gr 10-12).
- The CBE offers pre-kindergarten programming at one location to 40 students this year.

- As of end-September 2024, 14 schools offered a full day kindergarten program, reporting a total enrolment of 494 full day kindergarten students.
- Between end-September 2023 and end-September 2024, 20,103 K-12 students left the CBE, and 24,261 new students joined. A net gain of 4,158 students this school year is the result of student transfers and new registrations.

Table 1: Comparison of CBE Student Enrolment Counts between end-September 2023 and end-September 2024, by division.

	End-September 2023	End-September 2024	Difference
Pre-Kindergarten	37	40	3
Kindergarten	8,972	9,082	110
Grades 1-3 (Division I)	31,554	32,654	1,100
Grades 4-6 (Division II)	30,577	31,244	667
Grades 7-9 (Division III)	29,849	30,794	945
Grades 10-12 (Division IV)	34,591	35,902	1,311
Sub-Total (Pre-K to GR12)	135,580	139,716	4,136
Self Contained Special Ed.	2,664	2,686	22
<b>Total</b>	<b>138,244</b>	<b>142,402</b>	<b>4,158</b>

Record enrolment growth is putting pressure on our system. This has caused the number of schools in overflow status to rise. As of end-September 2024, 34 schools had an overflow plan in place. This represents 13.5 per cent of all CBE schools. By comparison, at the end of the 2022-23 school year, 21 schools had an overflow plan in place, while only 12 schools had an overflow plan in place at the end of the 2021-22 school year.

### Non-Canadian Student Admissions through the CBE Welcome Centre

Students who are “Non-Canadian”, as defined in AR6090, must register for admission to CBE schools through the CBE Welcome Centre. Students admitted through the CBE Welcome Centre include permanent residents, refugee claimants, children of lawfully admitted temporary residents, children with parents/guardians on work or study permits, and children with parents/guardians who are permanent residents or Canadian citizens although their child is not.

The CBE Welcome Centre tracks student registrations from July 1 to June 30 of each year. Graph 2 shows the number of Non-Canadian Students that registered through the CBE Welcome Centre since July 1, 2018.

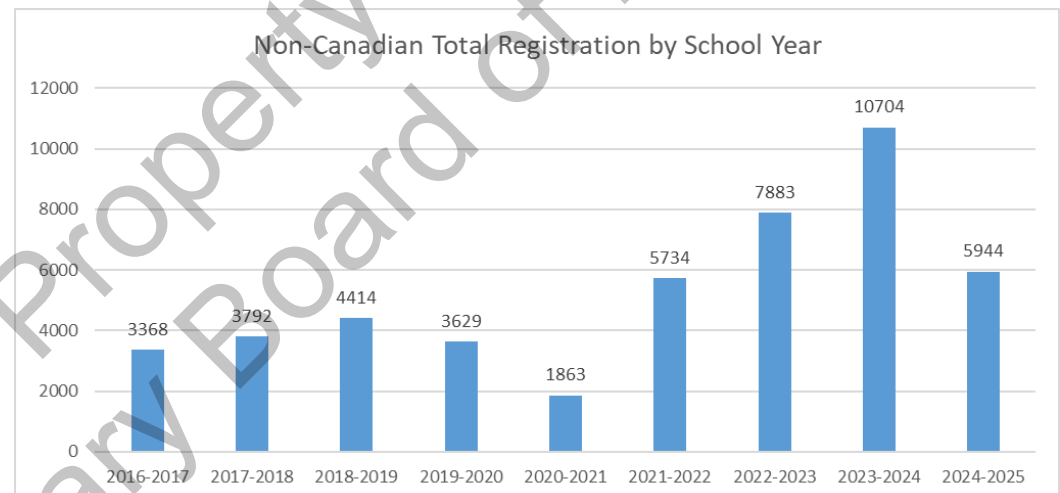
In the 2019-2020 and 2020-2021 school years, the number of student registrations through the Welcome Centre declined from 4414 registrations in 2018-19 by 785 students (18%) and 1,766 students (49%). This decline is likely attributable to global lockdowns and restricted travel that resulted from the COVID-19 pandemic.

Conversely, from July 1, 2021 to June 30, 2022, there were more than three times as many registrations (5,734) through the CBE Welcome Centre than during the 2020-21 school year. The uptick in non-Canadian student registrations continued during the 2022-2023 school year as 7,883 students registered through the Welcome Centre between July 1, 2022 and June 30, 2023. Between July 1, 2023 and June 30, 2024, 10,704 student registrations were processed by the CBE Welcome Centre. This is a 35.8 per cent or 2,821 increase in registrations from the year prior. This represents the highest annual non-Canadian student admission at CBE schools on record.

Non-Canadian student admissions has continued throughout the summer and autumn of 2024. For the 2024-25 school year, the Welcome Centre has processed 5,944 registrations up to October 28, 2024 (4 months of registrations).

It follows that student admissions through the CBE Welcome Centre are the primary contributor to the net increase in student enrolments for the past three years. However, Immigration, Refugees and Citizenship Canada (IRCC) has announced a decrease in overall permanent and temporary resident admissions for the next three years starting in 2025, as well as an intake cap on most study permit applications for two years starting in 2024. Due to these measures, it is likely that non-Canadian student registrations will be less during the 2024-25 school year.

Graph 2: Non-Canadian Student Admissions



*Note: Non-Canadian Total Registrations for 2024-2025 as of October 28, 2024*

The map in Attachment I shows where students who had enrolled for CBE schools through the CBE Welcome Centre resided at the time of registration. While registrants are distributed across the city, high concentrations are found in the centre and northeast sectors with smaller pockets in the northwest, and the far west, north and southeast sectors.

### School Enrolment (2023-2024)

Attachment II lists enrolment by CBE Administrative Area for each school by grade. It also reports the number of out-of-attendance area students in each school. Out-of-attendance-area (OOA) would include those students who are outside of CBE boundaries or are not attending their designated school. There are

several CBE schools in communities where enrolment from the designated communities may be low or declining and the out of attendance area students make up a relatively large proportion of the student population. Accepting out of attendance area students each year allows these schools to maintain strong programming for students. Additionally, the out-of-attendance transfer process can also allow students to access programs that may not exist within their designated school. This is typically most prevalent at the high school level. Recently, due to high enrolment and limited space in high schools, the ability to transfer schools has been extremely constrained, and has led to a decline in the number of OOA students at the high school level.

The number of students in each Administrative Area ranges between 17,498 students in Area 3 to 24,362 students in Area 5. The largest number of students are found in the Areas 4, 5 and 7. Between end-September 2022 and end-September 2024, enrolment in Area 5 has increased by 2,400 students or 11.2 per cent, while enrolment in Area 4 has increased by 1,600 students or 8.6 per cent, and Area 7 by 1,500 students or 8.1 per cent.

A graph of total student enrolment over the last decade is included in Attachment III. As of end-September 2024, 114,844 CBE students were enrolled in the regular program (including Home Education, Outreach, Unique Settings, Chinook Learning and CBe-learn), which represents an increase of 3,585 regular program students, or 3.2 per cent, from the 2023-24 school year.

Attachment IV is a map of student population change by community. It conveys the changes that occurred in pre-k to Grade 12 enrolment, by community, from end-September 2023 to end-September 2024. Consistent with the large increases in student population growth across the system, the largest increase occurred in the northeast, north, and southeast sectors, and the downtown area. The map also indicates the location of the Evanston middle school that is approved for construction and will be the next new CBE school to open.

### Alternative Programs

Enrolment in alternative programs by school is reported in Attachment V. As of end-September 2024, 27,558 CBE students (or 19.4 per cent of total student population) were enrolled in alternative programs, which represents an increase of 573 students, or 2.1 per cent, from the 2023-24 school year.

### Complex Learning Needs

Enrolment counts for the regular program include students with complex learning needs. Some schools have classes for students with complex learning needs that do not offer a regular program but do offer an alternative program. In these situations, enrolment for students with complex learning needs is reported separately. Schools that offer classes for students with complex learning needs, are known as specialized classes and can have grade configurations that differ from the school's regular or alternative program(s). For example, a school that accommodates kindergarten to Grade 4 students for the regular program may simultaneously offer Grade 5 complex learning classes.

A detailed list of classes and enrolment by school for students with complex learning needs is reported in Attachments VI and VII. As of end-September 2024,



3,173 CBE students (or 2.2 per cent of total student population) were enrolled in specialized classes (excluding Unique Settings), which represents an increase of 46 students, or 1.5 per cent, from the 2023-24 school year.

A list of definitions and acronyms for specialized classes for students with complex learning needs is included in Attachment VIII.

## Capacity and Utilization

Attachment IX provides provincial capacity and utilization rates for schools. The method for calculating Provincial Capacity is based on the on the “instructional” area determined for a school.

The following instructional spaces, if applicable for a particular school, are exempted and deducted from the total capacity of a school:

- areas leased to the public sector and non-profit groups, with the lease rate being at cost or for a nominal fee (e.g. not for profit daycare);
- areas leased by private schools;
- areas leased by charter schools; and
- decentralized administration space in schools.

Area exemptions are not granted for space leased to the private sector for non-private school use.

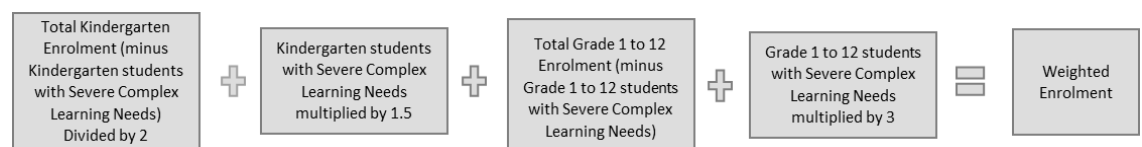
Lease exemptions are a parameter in the formula used to calculate capacity and as such, a school's capacity has the potential to change from year to year. The execution of a new lease for space, changes to an existing lease arrangement, or the discontinuation of a leased space at a school can alter a school's capacity value.

The calculation of utilization is based on a Provincial formula that “weighs” students in the following categories:

- Kindergarten students who typically attend school on a half day basis (Early Development Centre and full-day kindergarten students are not weighted).
- K-12 students who have severe complex learning needs.

Students with a severe complex learning code may attend either a regular program or a specialized complex learning class.

The graphic below gives the calculation for weighted enrolment based on end of September student enrolment each year:



Once weighted enrolment is determined, utilization is calculated by dividing the weighted enrolment by the Provincial capacity.

Between end-September 2023 and end-September 2024, the utilization rate of the CBE increased by 3 per cent. As of end-September 2024, the utilization rate of the system is 95 per cent. This is an increase from the 92 per cent in end-September 2023.

Table 2 shows the number of schools over, at, and under 85 per cent utilization per end-September 2023 enrolment data and end-September 2024 enrolment data.

Table 2: Comparison of number of schools over, at and under 85% utilization

	2023	2024	Change
Over 85%	154	171	17
At 85%	1	0	-1
Under 85%	83	67	-16

## Leases

Leases of space by Area and leasing of surplus school facilities are reported in Attachments X and XI. A total of 35,141.3 m<sup>2</sup>. of space in operating CBE facilities is leased for the 2024-25 school year and primarily consists of space for non-profit childcare providers. Fifteen surplus school facilities are leased, primarily to charter schools.

## 5 | Financial Impact

The Alberta Government uses a Weighted Moving Average (WMA) model to determine the funding school jurisdictions receive each year. The WMA is intended to provide a predictable amount of funding based on the budgeted school year. Table 3 shows how the three-year WMA enrolment is calculated.

Table 3: Three-year WMA enrolment

School year	Weighted Factor	Enrolment Count FTE
2022-2023	20%	Actual
2023-2024	30%	Estimate
2024-2025	50%	Projection

Source: Funding Manual for School Authorities 2024/2025 School Year



Table 4: Funding Full-time Enrolment (FTE) over three years.

Student Count	2022-2023	2023-2024	2024-2025
Actual Funded FTE	125,512	131,778	136,427*

\*subject to review and confirmation by Alberta Education

Table 4 shows the number of full-time equivalent funded students for this school year and the previous two years.

## 6 | Conclusion

Student enrolment for the 2024-25 school year has increased by a total of 4,158 students between end-September 2023 and end-September 2024. This represents an increase in year-over-year enrolment of 3.0 per cent.

The significant enrolment increase is attributable to the increase of interprovincial migration and non-Canadian student registrations through the CBE Welcome Centre.



JOANNE PITMAN  
CHIEF SUPERINTENDENT OF SCHOOLS

### ATTACHMENTS

Attachment I:	Welcome Centre Student Registrations 2024-2025
Attachment II:	End-September 2024 enrolment including out of attendance area
Attachment III:	CBE actual enrolment 2014-2024
Attachment IV:	Student population change by community
Attachment V:	Alternative program enrolment by school and grade
Attachment VI:	Specialized classes 2024-2025
Attachment VII:	Enrolment in specialized classes by school and by grade
Attachment VIII:	Specialized classes definitions
Attachment IX:	School capacity and utilization 2024-2025
Attachment X:	Leased space in operating CBE schools 2024-2025
Attachment XI:	Lease of surplus school facilities 2024-2025

### GLOSSARY – Developed by the Board of Trustees

Board: Board of Trustees

Governance Culture: The Board defined in policy the individual and collective behaviour required to establish a culture of good governance. These policies establish standards for how the Board performs its work, including policies that define the Board's job, its purpose and its accountability.

Board/Chief Superintendent Relationship: The Board defined in policy the degree of authority delegated to the Chief Superintendent, and set out how the Chief Superintendent's performance, and ultimately the organization's performance, will be evaluated.

Results: These policies define the outcome the organization is expected to achieve for each student it serves. The Results policies are the performance targets for the Chief Superintendent and the organization, and form the basis for judging the success of the organization and the Chief Superintendent on reasonable progress towards achieving the Results.

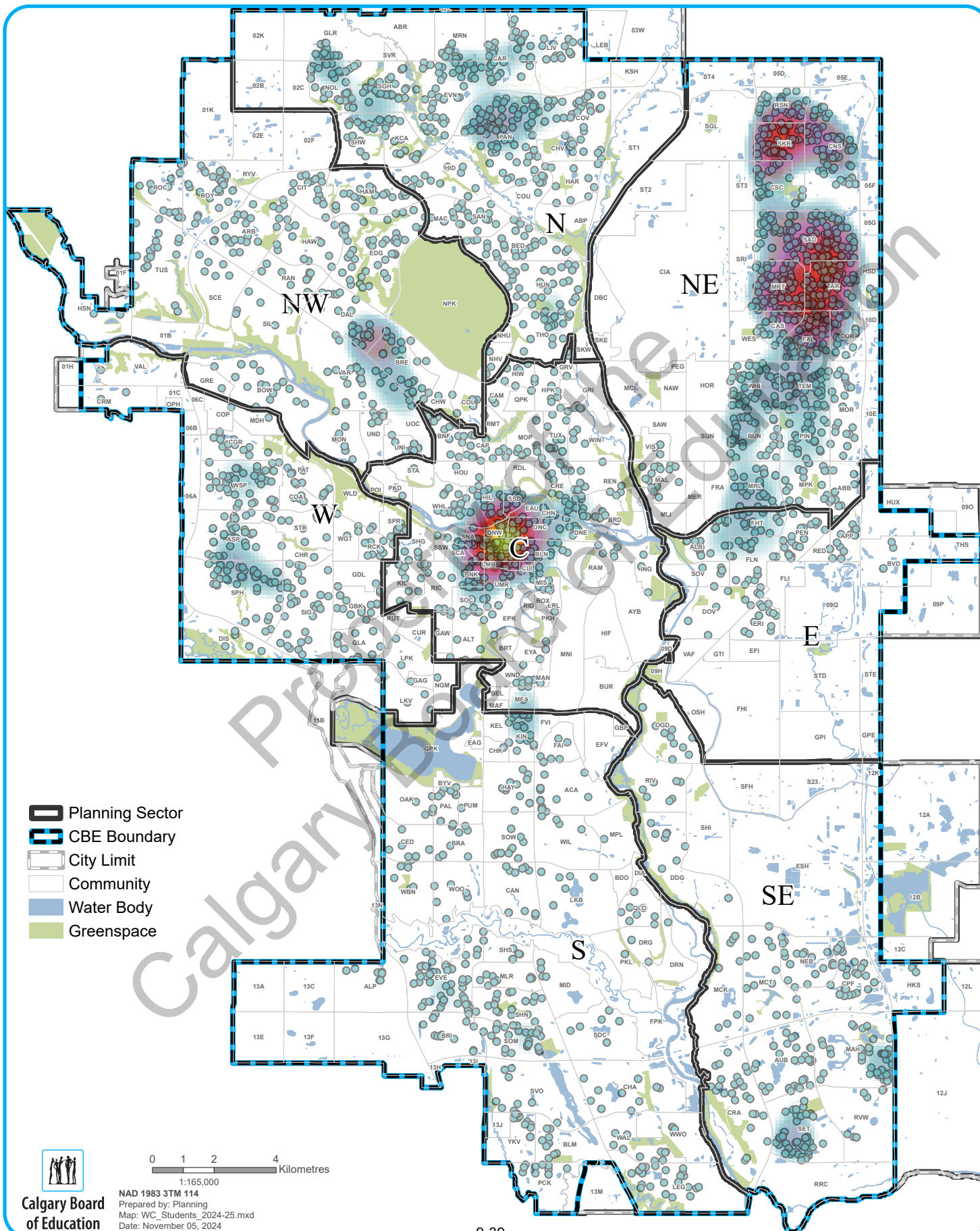
Operational Expectations: These policies define both the non-negotiable expectations and the clear boundaries within which the Chief Superintendent and staff must operate. The Chief Superintendent is required to comply with the Board's stated values about operational conditions and actions as set out in these policies.

Property of the  
Calgary Board of Education



# Welcome Centre Student Registrations 2024-2025

## As of September 27, 2024



**CALGARY BOARD OF EDUCATION**

Attachment II

**End-September 2024 enrolment including out-of-attendance area**

Schools highlighted in grey offer full-day kindergarten program.

SCSE = Self Contained Special Ed and represents system classes at the school level such as ACCESS, ALP, CSSI, etc.

SCHOOL		Total	Pre-K*	K	GR1	GR2	GR3	GR4	GR5	GR6	GR7	GR8	GR9	GR10	GR11	GR12	SCSE	OOA
Arbour Lake School		786	-	-	-	-	-	-	-	157	172	200	213	-	-	-	44	33
Belvedere Parkway School		494	-	57	72	55	76	65	82	77	-	-	-	-	-	-	10	7
Bowcroft School		213	-	21	33	34	40	35	18	32	-	-	-	-	-	-	-	14
Bowcroft School	German Bilingual	144	-	24	20	31	22	16	20	11	-	-	-	-	-	-	-	-
Bowness High School		1,433	-	-	-	-	-	-	-	-	-	-	-	459	507	455	12	184
Brentwood School	Traditional Learning	815	-	124	125	125	125	103	114	99	-	-	-	-	-	-	-	12
Captain John Palliser School		285	-	20	15	35	35	26	76	62	-	-	-	-	-	-	16	22
Captain John Palliser School	Montessori	315	-	47	57	50	62	37	30	32	-	-	-	-	-	-	-	-
Citadel Park School		500	-	77	74	80	105	70	94	-	-	-	-	-	-	-	-	5
Dr. E. W. Coffin School		205	-	16	27	30	23	29	41	39	-	-	-	-	-	-	-	66
Edgemont School		623	-	70	80	111	115	106	141	-	-	-	-	-	-	-	-	2
Eric Harvie School		473	-	76	75	91	82	73	76	-	-	-	-	-	-	-	-	26
F. E. Osborne School		479	-	-	-	-	-	-	-	-	152	144	183	-	-	-	-	22
F. E. Osborne School	French Immersion	185	-	-	-	-	-	-	-	53	46	39	47	-	-	-	-	13
H. D. Cartwright School		472	-	-	-	-	-	-	-	-	130	154	157	-	-	-	31	22
The Hamptons School		174	-	22	24	39	48	41	-	-	-	-	-	-	-	-	-	6
Hawkwood School		680	-	78	103	108	117	111	101	62	-	-	-	-	-	-	-	3
Marion Carson School		264	-	26	33	32	54	35	42	42	-	-	-	-	-	-	-	3
Marion Carson School	Chinese (Mandarin) Bilingual	239	-	48	52	48	48	43	-	-	-	-	-	-	-	-	-	-
Ranchlands School		383	-	41	54	52	53	52	55	57	-	-	-	-	-	-	19	2
Robert Thirsk High School		1,453	-	-	-	-	-	-	-	-	-	-	-	438	494	478	43	102
Royal Oak School		585	-	87	116	123	136	123	-	-	-	-	-	-	-	-	-	1
Scenic Acres School		194	-	32	32	30	38	30	32	-	-	-	-	-	-	-	-	8
Silver Springs School		261	-	30	35	40	43	41	30	42	-	-	-	-	-	-	-	2
Simon Fraser School		646	-	-	-	-	-	-	81	76	168	152	169	-	-	-	-	7
Sir Winston Churchill High School		2,187	-	-	-	-	-	-	-	-	-	-	-	665	701	805	16	63
Terrace Road School		207	-	28	30	27	41	22	33	22	-	-	-	-	-	-	4	18
Thomas B. Riley School		201	-	-	-	-	-	-	-	-	57	60	55	-	-	-	29	8
Thomas B. Riley School	Traditional Learning	267	-	-	-	-	-	-	-	-	95	93	79	-	-	-	-	3
Tom Baines School		824	-	-	-	-	-	-	-	152	208	223	241	-	-	-	-	14
Tuscany School		258	-	28	33	38	40	47	56	-	-	-	-	-	-	-	16	8
Tuscany School	French Immersion	330	-	62	67	49	58	45	49	-	-	-	-	-	-	-	-	4
Twelve Mile Coulee School		679	-	-	-	-	-	-	-	173	178	171	157	-	-	-	-	34
West Dalhousie School		293	-	22	35	33	40	48	48	52	-	-	-	-	-	-	15	21
William D. Pratt School		922	-	-	-	-	-	-	178	185	181	184	188	-	-	-	6	6
<b>AREA 1 TOTAL</b>		<b>18,469</b>	<b>-</b>	<b>1,036</b>	<b>1,192</b>	<b>1,261</b>	<b>1,401</b>	<b>1,198</b>	<b>1,397</b>	<b>1,425</b>	<b>1,387</b>	<b>1,420</b>	<b>1,489</b>	<b>1,562</b>	<b>1,702</b>	<b>1,738</b>	<b>261</b>	<b>741</b>

**CALGARY BOARD OF EDUCATION**

Attachment II

**End-September 2024 enrolment including out-of-attendance area**

Schools highlighted in grey offer full-day kindergarten program.

SCSE = Self Contained Special Ed and represents system classes at the school level such as ACCESS, ALP, CSSI, etc.

SCHOOL		Total	Pre-K*	K	GR1	GR2	GR3	GR4	GR5	GR6	GR7	GR8	GR9	GR10	GR11	GR12	SCSE	OOA
Alex Munro School		289	-	37	40	45	48	32	42	45	-	-	-	-	-	-	-	38
Balmoral School	Traditional Learning	573	-	-	-	-	-	-	120	118	118	108	109	-	-	-	-	6
Banff Trail School	French Immersion	387	-	58	74	72	60	62	61	-	-	-	-	-	-	-	-	6
Beddington Heights School		413	-	56	60	76	51	60	63	37	-	-	-	-	-	-	10	27
Branton School	French Immersion	686	-	-	-	-	-	-	-	100	233	180	161	-	-	-	12	32
Buchanan School		188	-	19	34	21	26	26	19	25	-	-	-	-	-	-	18	8
Buffalo Rubbing Stone School		641	-	63	96	126	122	106	128	-	-	-	-	-	-	-	-	17
Cambrian Heights School		384	-	36	65	67	62	59	48	39	-	-	-	-	-	-	8	10
Capitol Hill School		339	-	39	41	40	55	52	62	50	-	-	-	-	-	-	-	10
Captain Nichola Goddard School		967	-	-	-	-	-	-	225	266	251	225	-	-	-	-	-	10
Catherine Nichols Gunn School		440	-	75	59	61	79	48	47	71	-	-	-	-	-	-	-	26
Collingwood School	Spanish Bilingual	502	-	85	88	90	82	83	74	-	-	-	-	-	-	-	-	5
Colonel Irvine School		347	-	-	-	-	-	-	-	-	118	101	117	-	-	-	11	10
Colonel Irvine School	Chinese (Mandarin) Bilingual	429	-	-	-	-	-	-	87	102	85	68	87	-	-	-	-	1
Colonel Sanders School	Traditional Learning	393	-	-	99	96	104	94	-	-	-	-	-	-	-	-	-	5
Dalhousie School	Spanish Bilingual	475	-	86	82	77	74	83	73	-	-	-	-	-	-	-	-	5
Dr. J. K. Mulloy School	Traditional Learning	526	-	105	110	103	104	104	-	-	-	-	-	-	-	-	-	6
Georges P. Vanier School		186	-	-	-	-	-	-	-	-	57	48	51	-	-	-	30	18
Georges P. Vanier School	French Immersion	374	-	-	-	-	-	-	62	122	107	83	-	-	-	-	-	11
Highwood School	Chinese (Mandarin) Bilingual	356	-	75	75	73	69	64	-	-	-	-	-	-	-	-	-	7
Huntington Hills School		239	-	26	29	37	28	36	33	38	-	-	-	-	-	-	12	11
James Fowler High School		1,578	-	-	-	-	-	-	-	-	-	-	-	461	485	554	78	107
John G. Diefenbaker High School		1,296	-	-	-	-	-	-	-	-	-	-	-	468	444	384	-	59
Kenneth D. Taylor		642	-	124	125	125	125	125	-	-	-	-	-	-	-	-	18	1
King George School	French Immersion	664	-	90	142	126	109	97	100	-	-	-	-	-	-	-	-	8
North Haven School		266	-	28	43	43	35	32	31	27	-	-	-	-	-	-	27	11
Panorama Hills School		524	-	64	70	89	94	79	102	-	-	-	-	-	-	-	26	13
Senator Patrick Burns School		162	-	-	-	-	-	-	-	-	45	45	56	-	-	-	16	16
Senator Patrick Burns School	Spanish Bilingual	600	-	-	-	-	-	-	-	154	160	123	163	-	-	-	-	-
Sir John A. Macdonald School		688	-	-	-	-	-	-	-	-	212	194	251	-	-	-	31	12
Sir John Franklin School	System Classes	78	-	-	-	-	-	-	-	-	-	-	-	-	-	-	78	-
Sir John Franklin School	Arts Centered Learning	269	-	-	-	-	-	-	13	18	90	74	74	-	-	-	-	5
Thorncliffe School		215	-	23	23	33	32	24	46	34	-	-	-	-	-	-	-	22
Thorncliffe School	Traditional Learning	66	-	66	-	-	-	-	-	-	-	-	-	-	-	-	-	2
Varsity Acres School	French Immersion	595	-	84	107	115	127	74	88	-	-	-	-	-	-	-	-	4
W. O. Mitchell School	Spanish Bilingual	339	-	61	58	62	59	50	49	-	-	-	-	-	-	-	-	9

**CALGARY BOARD OF EDUCATION**

Attachment II

**End-September 2024 enrolment including out-of-attendance area**

Schools highlighted in grey offer full-day kindergarten program.

SCSE = Self Contained Special Ed and represents system classes at the school level such as ACCESS, ALP, CSSI, etc.

SCHOOL		Total	Pre-K*	K	GR1	GR2	GR3	GR4	GR5	GR6	GR7	GR8	GR9	GR10	GR11	GR12	SCSE	OOA
William Aberhart High School		501	-	-	-	-	-	-	-	-	-	-	-	132	167	150	52	152
William Aberhart High School	French Immersion	796	-	-	-	-	-	-	-	-	-	-	-	290	241	265	-	5
<b>AREA 2 TOTAL</b>		<b>18,413</b>	<b>-</b>	<b>1,300</b>	<b>1,520</b>	<b>1,577</b>	<b>1,545</b>	<b>1,390</b>	<b>1,286</b>	<b>1,145</b>	<b>1,506</b>	<b>1,299</b>	<b>1,377</b>	<b>1,351</b>	<b>1,337</b>	<b>1,353</b>	<b>427</b>	<b>695</b>
Abbeyle School		326	-	36	39	48	49	46	52	47	-	-	-	-	-	-	9	14
Belfast School		204	-	25	21	21	23	29	32	23	-	-	-	-	-	-	30	104
Cappy Smart School		243	-	30	29	37	31	28	30	30	-	-	-	-	-	-	28	21
Colonel Macleod School		205	-	-	-	-	-	-	-	-	63	70	51	-	-	-	21	10
Colonel Macleod School	Traditional Learning	454	-	-	-	-	-	-	94	95	94	92	79	-	-	-	-	12
Coventry Hills School		618	-	98	80	111	121	105	103	-	-	-	-	-	-	-	-	2
Crescent Heights High School		1,356	-	-	-	-	-	-	-	-	-	-	-	407	435	445	69	348
Crescent Heights High School	Spanish Bilingual	233	-	-	-	-	-	-	-	-	-	-	-	82	69	82	-	-
Dr. Gladys McKelvie Egbert School		348	-	-	-	-	-	-	-	-	98	114	108	-	-	-	28	17
Erin Woods School		354	-	42	50	54	41	44	53	44	-	-	-	-	-	-	26	13
Ernest Morrow School		621	-	-	-	-	-	-	-	-	193	172	183	-	-	-	73	38
Forest Lawn High School		1,477	-	-	-	-	-	-	-	-	-	-	-	387	460	522	108	102
G. W. Skene School		169	-	-	-	-	-	65	52	52	-	-	-	-	-	-	-	5
Hidden Valley School		297	-	54	49	65	61	68	-	-	-	-	-	-	-	-	-	3
Hidden Valley School	French Immersion	262	-	49	52	51	55	55	-	-	-	-	-	-	-	-	-	3
Ian Bazalgette School		429	-	-	-	-	-	-	-	-	180	117	132	-	-	-	-	24
Ian Bazalgette School	Science	157	-	-	-	-	-	-	-	-	59	54	44	-	-	-	-	-
Jack James High School		396	-	-	-	-	-	-	-	-	-	-	-	102	126	137	31	1
James Short Memorial School		225	-	58	56	53	58	-	-	-	-	-	-	-	-	-	-	11
Keeler School		559	-	62	94	84	90	76	75	78	-	-	-	-	-	-	-	14
Mount View School		191	-	21	29	25	31	26	20	24	-	-	-	-	-	-	15	22
North Trail High School		2,052	-	-	-	-	-	-	-	-	-	-	-	736	695	594	27	31
Northern Lights School		599	-	74	108	101	117	100	99	-	-	-	-	-	-	-	-	3
Nose Creek School		913	-	-	-	-	-	-	-	200	241	216	220	-	-	-	36	14
Patrick Airlie School		250	-	27	28	42	40	35	42	36	-	-	-	-	-	-	-	17
Penbrooke Meadows School		250	-	31	36	35	42	22	35	27	-	-	-	-	-	-	22	22
Piitoyis Family School	Colonel Walker	227	-	30	23	31	49	32	30	32	-	-	-	-	-	-	-	-
Radisson Park School		360	-	42	44	54	65	54	58	43	-	-	-	-	-	-	-	23
Riverside School	System Classes	9	-	-	-	-	-	-	-	-	-	-	-	-	-	-	9	-
Riverside School	Science	640	-	48	51	49	50	56	57	57	89	89	94	-	-	-	-	18
Roland Michener School		187	-	16	25	24	27	26	21	23	-	-	-	-	-	-	25	11
Rosedale School		267	-	19	25	23	28	34	14	24	29	36	35	-	-	-	-	24



**CALGARY BOARD OF EDUCATION**

Attachment II

**End-September 2024 enrolment including out-of-attendance area**

Schools highlighted in grey offer full-day kindergarten program.

SCSE = Self Contained Special Ed and represents system classes at the school level such as ACCESS, ALP, CSSI, etc.

SCHOOL		Total	Pre-K*	K	GR1	GR2	GR3	GR4	GR5	GR6	GR7	GR8	GR9	GR10	GR11	GR12	SCSE	OOA
Rosemont School		207	-	16	27	29	31	30	35	31	-	-	-	-	-	-	8	13
Stanley Jones School		374	-	59	61	67	55	48	45	39	-	-	-	-	-	-	-	16
Stanley Jones School	Alice Jamieson	119	-	-	-	-	-	13	16	19	21	16	34	-	-	-	-	-
Sunnyside School		185	-	22	36	30	22	24	25	26	-	-	-	-	-	-	-	25
Valley Creek School		523	-	-	-	-	-	-	66	79	134	123	98	-	-	-	23	5
Valley Creek School	French Immersion	240	-	-	-	-	-	-	59	42	56	40	43	-	-	-	-	3
Valley View School		240	-	24	38	33	37	36	38	34	-	-	-	-	-	-	-	22
Valley View School	Science	336	-	44	48	50	50	50	47	47	-	-	-	-	-	-	-	-
Vista Heights School		153	-	21	11	21	15	22	19	23	-	-	-	-	-	-	21	2
West Dover School		243	-	24	47	34	38	34	36	15	-	-	-	-	-	-	15	24
<b>AREA 3 TOTAL</b>		<b>17,498</b>	<b>-</b>	<b>972</b>	<b>1,107</b>	<b>1,172</b>	<b>1,226</b>	<b>1,158</b>	<b>1,253</b>	<b>1,190</b>	<b>1,257</b>	<b>1,139</b>	<b>1,121</b>	<b>1,714</b>	<b>1,785</b>	<b>1,780</b>	<b>624</b>	<b>1,037</b>
Annie Foote School		494	-	91	100	81	63	53	50	56	-	-	-	-	-	-	-	24
Annie Gale School		348	-	-	-	-	-	-	-	-	105	118	98	-	-	-	27	8
Annie Gale School	Traditional Learning	241	-	-	-	-	-	-	-	58	61	69	53	-	-	-	-	2
Bob Edwards School		364	-	-	-	-	-	-	-	103	94	72	83	-	-	-	12	26
Bob Edwards School	French Immersion	169	-	-	-	-	-	-	-	-	69	55	45	-	-	-	-	1
Cecil Swanson School		339	-	46	35	44	57	44	39	56	-	-	-	-	-	-	18	33
Chief Justice Milvain School		188	-	27	32	26	21	26	28	28	-	-	-	-	-	-	-	2
Chief Justice Milvain School	Traditional Learning	376	-	50	48	74	75	76	53	-	-	-	-	-	-	-	-	1
Chris Akkerman School	Traditional Learning	651	-	102	100	106	103	120	120	-	-	-	-	-	-	-	-	7
Clarence Sansom School		734	-	-	-	-	-	-	-	-	195	270	232	-	-	-	37	21
Colonel J. Fred Scott School		454	-	47	68	63	63	75	61	77	-	-	-	-	-	-	-	13
Crossing Park School		1,076	-	80	64	78	106	65	105	92	176	124	175	-	-	-	11	22
Douglas Harkness School		330	-	37	36	62	43	54	47	51	-	-	-	-	-	-	-	5
Dr. Gordon Higgins School		684	-	-	-	-	-	-	-	-	202	243	207	-	-	-	32	5
Falconridge School		519	-	72	72	84	81	56	76	60	-	-	-	-	-	-	18	20
Grant MacEwan School		646	-	94	83	108	93	90	93	85	-	-	-	-	-	-	-	8
Guy Weadick School		410	-	53	76	75	59	67	43	37	-	-	-	-	-	-	-	5
Hugh A. Bennett School		671	-	131	137	149	121	124	-	-	-	-	-	-	-	-	9	12
Lester B. Pearson High School		1,646	-	-	-	-	-	-	-	-	-	-	-	542	541	535	28	98
Louise Dean School		25	-	-	-	-	-	-	-	-	-	-	-	-	3	22	-	1
Manmeet Singh Bhullar School		516	-	56	68	88	80	78	66	80	-	-	-	-	-	-	-	10
Marlborough School		291	-	46	47	68	39	47	44	-	-	-	-	-	-	-	-	1
Mayland Heights School		143	-	21	18	21	29	17	20	17	-	-	-	-	-	-	-	48
Mayland Heights School	French Immersion	305	-	62	52	55	34	34	37	31	-	-	-	-	-	-	-	6
Monterey Park School		557	-	96	76	86	62	65	66	81	-	-	-	-	-	-	25	8
Nelson Mandela High School		1,931	-	-	-	-	-	-	-	-	-	-	-	625	623	628	55	30
O. S. Geiger School		500	-	62	73	76	67	67	76	49	-	-	-	-	-	-	30	11
Peter Lougheed School		980	-	-	-	-	-	-	185	183	202	195	199	-	-	-	16	-

**CALGARY BOARD OF EDUCATION**

Attachment II

**End-September 2024 enrolment including out-of-attendance area**

Schools highlighted in grey offer full-day kindergarten program.

SCSE = Self Contained Special Ed and represents system classes at the school level such as ACCESS, ALP, CSSI, etc.

SCHOOL		Total	Pre-K*	K	GR1	GR2	GR3	GR4	GR5	GR6	GR7	GR8	GR9	GR10	GR11	GR12	SCSE	OOA
Pineridge School		402	-	27	37	34	28	36	113	93	-	-	-	-	-	-	34	23
Prairie Sky School		916	-	50	99	115	121	80	129	104	82	85	51	-	-	-	-	7
Rundle School		493	-	64	75	66	84	81	85	38	-	-	-	-	-	-	-	9
Saddle Ridge School		648	-	130	131	133	124	130	-	-	-	-	-	-	-	-	-	2
Sir Wilfrid Laurier School	Traditional Learning	477	-	-	-	-	-	-	-	123	126	123	100	-	-	-	5	19
Taradale School		672	-	136	137	133	131	135	-	-	-	-	-	-	-	-	-	5
Ted Harrison School		902	-	-	-	-	-	-	167	181	177	181	174	-	-	-	22	-
Terry Fox School		586	-	-	-	-	-	-	-	-	147	197	185	-	-	-	57	6
<b>AREA 4 TOTAL</b>		<b>20,684</b>	<b>-</b>	<b>1,580</b>	<b>1,664</b>	<b>1,825</b>	<b>1,684</b>	<b>1,620</b>	<b>1,703</b>	<b>1,683</b>	<b>1,636</b>	<b>1,732</b>	<b>1,602</b>	<b>1,167</b>	<b>1,167</b>	<b>1,185</b>	<b>436</b>	<b>499</b>
Acadia School		438	-	53	62	71	69	59	69	55	-	-	-	-	-	-	-	16
Auburn Bay School		565	-	68	78	92	92	100	118	-	-	-	-	-	-	-	17	6
Bayside School		604	-	68	100	121	105	121	89	-	-	-	-	-	-	-	-	21
Bridlewood School		498	-	68	57	80	84	79	71	59	-	-	-	-	-	-	-	33
Centennial High School		1,780	-	-	-	-	-	-	-	-	-	-	-	614	574	541	51	82
Chaparral School		513	-	67	74	90	74	73	68	67	-	-	-	-	-	-	-	1
Copperfield School		599	-	80	104	109	94	100	112	-	-	-	-	-	-	-	-	2
Cranston School		589	-	110	118	128	121	112	-	-	-	-	-	-	-	-	-	2
Deer Run School		334	-	39	40	56	51	55	39	38	-	-	-	-	-	-	16	9
Douglasdale School		370	-	47	61	46	82	66	68	-	-	-	-	-	-	-	-	15
Dr. George Stanley School		846	-	-	-	-	-	-	109	198	178	183	178	-	-	-	-	21
Dr. Martha Cohen School		874	-	-	-	-	-	-	-	228	219	235	192	-	-	-	-	13
Fairview School	Traditional Learning	911	-	-	-	-	-	156	155	161	156	151	132	-	-	-	-	-
Fish Creek School		567	-	64	66	77	78	94	97	91	-	-	-	-	-	-	-	58
Haultain Memorial School		185	-	28	19	18	36	26	30	28	-	-	-	-	-	-	-	7
Joane Cardinal-Schubert High School		1,902	-	-	-	-	-	-	-	-	-	-	-	605	645	652	-	35
Lake Bonavista School	Montessori	363	-	56	63	74	48	45	48	29	-	-	-	-	-	-	-	-
Lakeshore School		967	-	-	-	-	-	-	-	193	298	251	225	-	-	-	-	3
Le Roi Daniels School	Traditional Learning	581	-	131	144	149	157	-	-	-	-	-	-	-	-	-	-	-
Lord Beaverbrook High School		1,973	-	-	-	-	-	-	-	-	-	-	-	721	591	585	76	162
Mahogany School		773	-	126	138	145	152	104	108	-	-	-	-	-	-	-	-	6
Maple Ridge School	Science	394	-	74	74	89	76	81	-	-	-	-	-	-	-	-	-	3
McKenzie Highlands School		773	-	-	-	-	-	35	114	144	143	130	164	-	-	-	43	46
McKenzie Lake School		585	-	67	80	114	107	122	77	-	-	-	-	-	-	-	18	5
McKenzie Towne School		543	-	89	123	118	95	91	-	-	-	-	-	-	-	-	27	6
Midnapore School		278	-	25	33	46	53	31	52	38	-	-	-	-	-	-	-	32
Midnapore School	Chinese (Mandarin) Bilingual	152	-	29	44	32	26	21	-	-	-	-	-	-	-	-	-	-

**CALGARY BOARD OF EDUCATION**

Attachment II

**End-September 2024 enrolment including out-of-attendance area**

Schools highlighted in grey offer full-day kindergarten program.

SCSE = Self Contained Special Ed and represents system classes at the school level such as ACCESS, ALP, CSSI, etc.

SCHOOL		Total	Pre-K*	K	GR1	GR2	GR3	GR4	GR5	GR6	GR7	GR8	GR9	GR10	GR11	GR12	SCSE	OOA
MidSun School		638	-	-	-	-	-	-	-	-	214	193	191	-	-	-	40	32
Mountain Park School		552	-	-	-	-	-	-	-	133	125	151	127	-	-	-	16	21
New Brighton School		597	-	102	87	118	89	90	111	-	-	-	-	-	-	-	-	1
Prince Of Wales School		325	-	52	68	66	73	42	14	10	-	-	-	-	-	-	-	2
R. T. Alderman School	Science	679	-	-	-	-	-	-	111	144	144	147	133	-	-	-	-	6
Samuel W. Shaw School		812	-	-	-	-	-	-	112	122	181	190	178	-	-	-	29	19
Sibylla Kiddle School		606	-	87	103	107	112	117	80	-	-	-	-	-	-	-	-	30
Somerset School		234	-	29	53	58	44	50	-	-	-	-	-	-	-	-	-	12
Willow Park School	Arts Centered Learning	569	-	-	-	-	-	-	62	87	131	149	140	-	-	-	-	4
Wilma Hansen School		393	-	-	-	-	-	-	42	28	99	96	106	-	-	-	22	21
<b>AREA 5 TOTAL</b>		<b>24,362</b>	<b>-</b>	<b>1,559</b>	<b>1,789</b>	<b>2,004</b>	<b>1,918</b>	<b>1,870</b>	<b>1,956</b>	<b>1,853</b>	<b>1,888</b>	<b>1,876</b>	<b>1,766</b>	<b>1,940</b>	<b>1,810</b>	<b>1,778</b>	<b>355</b>	<b>732</b>
A. E. Cross School		533	-	-	-	-	-	-	-	-	138	183	182	-	-	-	30	34
A. E. Cross School	Spanish Bilingual	60	-	-	-	-	-	-	-	-	21	12	27	-	-	-	-	1
Altadore School		372	-	49	61	59	60	53	47	43	-	-	-	-	-	-	-	6
Alternative High School		125	-	-	-	-	-	-	-	-	-	-	-	16	33	49	27	1
Andrew Sibbald School		313	-	44	50	58	48	56	57	-	-	-	-	-	-	-	-	11
Banting and Best School		203	-	48	50	50	55	-	-	-	-	-	-	-	-	-	-	7
Braeside School		227	-	24	27	36	45	26	38	31	-	-	-	-	-	-	-	28
Canyon Meadows School	Spanish Bilingual	456	-	74	80	86	71	62	83	-	-	-	-	-	-	-	-	24
Cedarbrae School		189	-	19	26	26	31	29	29	21	-	-	-	-	-	-	8	35
Central Memorial High School		1,517	-	-	-	-	-	-	-	-	-	-	-	451	538	507	21	440
Chinook Park School		273	-	26	42	46	33	49	38	39	-	-	-	-	-	-	-	8
Chinook Park School	French Immersion	260	-	36	46	44	38	41	28	27	-	-	-	-	-	-	-	8
David Thompson School		146	-	-	-	-	-	-	-	-	54	42	50	-	-	-	-	11
David Thompson School	French Immersion	487	-	-	-	-	-	-	78	58	135	122	94	-	-	-	-	15
Dr. E. P. Scarlett High School		1,388	-	-	-	-	-	-	-	-	-	-	-	473	461	454	-	153
Dr. E. P. Scarlett High School	French Immersion	365	-	-	-	-	-	-	-	-	-	-	-	133	128	104	-	-
Dr. Freda Miller School		469	-	46	72	91	103	89	68	-	-	-	-	-	-	-	-	9
Ethel M. Johnson School		252	-	20	22	35	34	28	37	28	-	-	-	-	-	-	48	6
Eugene Coste School	Spanish Bilingual	381	-	69	68	75	64	67	38	-	-	-	-	-	-	-	-	44
Evergreen School		491	-	63	72	76	94	83	86	-	-	-	-	-	-	-	17	40
Glenbrook School		294	-	36	36	39	50	31	50	52	-	-	-	-	-	-	-	22
Glenmeadows School	Spanish Bilingual	389	-	56	73	72	73	43	37	35	-	-	-	-	-	-	-	24
Harold Panabaker School		283	-	-	-	-	-	-	-	-	78	99	81	-	-	-	25	16
Harold Panabaker School	Chinese (Mandarin) Bilingual	99	-	-	-	-	-	-	27	20	16	20	16	-	-	-	-	4
Haysboro School		227	-	28	35	36	36	27	26	39	-	-	-	-	-	-	-	15
Henry Wise Wood High School		1,905	-	-	-	-	-	-	-	-	-	-	-	616	640	618	31	101
Janet Johnstone School		289	-	37	60	65	66	61	-	-	-	-	-	-	-	-	-	1
Janet Johnstone School	French Immersion	193	-	38	42	50	34	29	-	-	-	-	-	-	-	-	-	1

**CALGARY BOARD OF EDUCATION**

Attachment II

**End-September 2024 enrolment including out-of-attendance area**

Schools highlighted in grey offer full-day kindergarten program.

SCSE = Self Contained Special Ed and represents system classes at the school level such as ACCESS, ALP, CSSI, etc.

SCHOOL		Total	Pre-K*	K	GR1	GR2	GR3	GR4	GR5	GR6	GR7	GR8	GR9	GR10	GR11	GR12	SCSE	OOA
John Ware School		389	-	-	-	-	-	-	-	-	111	132	136	-	-	-	10	23
Louis Riel School	System Classes	160	-	-	-	-	-	13	26	27	21	18	55	-	-	-	-	-
Louis Riel School	Science	731	-	65	66	66	75	54	54	84	91	94	82	-	-	-	-	13
Marshall Springs School		708	-	-	-	-	-	-	-	164	166	175	198	-	-	-	5	14
Nellie McClung School		372	-	46	56	64	53	45	55	53	-	-	-	-	-	-	-	58
Nickle School		351	-	-	-	-	-	-	-	143	53	64	51	-	-	-	40	17
Riverbend School		303	-	45	54	66	46	44	31	17	-	-	-	-	-	-	-	17
Robert Warren School	Spanish Bilingual	307	-	-	-	-	-	-	-	88	77	59	83	-	-	-	-	1
Ron Southern School		505	-	56	75	80	73	73	66	64	-	-	-	-	-	-	18	13
Sam Livingston School	French Immersion	400	-	66	79	92	84	79	-	-	-	-	-	-	-	-	-	10
Sherwood School		365	-	-	-	-	-	38	59	52	55	73	84	-	-	-	4	24
Sundance School	French Immersion	565	-	100	99	87	86	67	65	61	-	-	-	-	-	-	-	7
Woodbine School		397	-	51	59	52	65	52	58	60	-	-	-	-	-	-	-	5
Woodlands School		244	-	35	38	38	41	33	26	33	-	-	-	-	-	-	-	17
Woodman School		249	-	-	-	-	-	-	-	-	62	94	93	-	-	-	-	15
Woodman School	French Immersion	302	-	-	-	-	-	-	30	20	97	66	89	-	-	-	-	9
<b>AREA 6 TOTAL</b>		<b>18,534</b>	<b>-</b>	<b>1,177</b>	<b>1,388</b>	<b>1,489</b>	<b>1,458</b>	<b>1,272</b>	<b>1,237</b>	<b>1,259</b>	<b>1,175</b>	<b>1,253</b>	<b>1,321</b>	<b>1,689</b>	<b>1,800</b>	<b>1,732</b>	<b>284</b>	<b>1,308</b>
Alexander Ferguson School		235	-	32	36	41	25	33	34	34	-	-	-	-	-	-	-	23
All Boys Program	Sir James Lougheed	33	-	-	5	7	6	7	1	7	-	-	-	-	-	-	-	-
Battalion Park School		517	-	40	70	71	93	61	89	76	-	-	-	-	-	-	17	16
Bishop Pinkham School		184	-	-	-	-	-	-	-	-	61	51	67	-	-	-	5	13
Bishop Pinkham School	French Immersion	428	-	-	-	-	-	-	-	-	168	125	135	-	-	-	-	6
Briar Hill School		222	-	28	39	33	35	28	28	31	-	-	-	-	-	-	-	85
Colonel Walker School		170	-	29	33	30	27	19	22	10	-	-	-	-	-	-	-	12
Connaught School		486	-	91	77	63	65	70	63	57	-	-	-	-	-	-	-	23
Dr. Roberta Bondar School		603	-	66	64	97	104	91	101	80	-	-	-	-	-	-	-	13
Earl Grey School		312	-	25	48	46	49	51	44	35	-	-	-	-	-	-	14	38
Elbow Park School		236	-	30	32	37	37	32	31	37	-	-	-	-	-	-	-	4
Elboya School		379	-	22	51	47	48	41	38	40	30	33	29	-	-	-	-	12
Elboya School	French Immersion	349	-	-	-	-	-	-	54	63	88	63	81	-	-	-	-	11
Ernest Manning High School		1,876	-	-	-	-	-	-	-	-	-	-	-	632	667	564	13	75
Glamorgan School	Traditional Learning	763	-	86	78	77	84	84	84	87	64	64	55	-	-	-	-	2
Glendale School		243	-	27	36	35	41	32	36	36	-	-	-	-	-	-	-	30
Griffith Woods School		964	-	73	86	77	105	82	113	107	116	113	92	-	-	-	-	3
Hillhurst School		301	-	21	27	37	39	45	71	61	-	-	-	-	-	-	-	50
Jennie Elliott School		575	-	65	79	89	89	76	72	66	-	-	-	-	-	-	39	10
Killarney School	Montessori	353	-	64	60	66	51	33	43	36	-	-	-	-	-	-	-	6
Mount Royal School		422	-	-	-	-	-	-	-	-	129	128	161	-	-	-	4	9
Olympic Heights School		515	-	57	67	62	93	74	66	96	-	-	-	-	-	-	-	25

CALGARY BOARD OF EDUCATION  
End-September 2024 enrolment including out-of-attendance area

Attachment II

Schools highlighted in grey offer full-day kindergarten program.

SCSE = Self Contained Special Ed and represents system classes at the school level such as ACCESS, ALP, CSSI, etc.

SCHOOL		Total	Pre-K*	K	GR1	GR2	GR3	GR4	GR5	GR6	GR7	GR8	GR9	GR10	GR11	GR12	SCSE	OOA
Queen Elizabeth School		426	-	49	64	66	74	56	70	47	-	-	-	-	-	-	-	13
Queen Elizabeth High School		960	-	-	-	-	-	-	-	-	151	170	179	116	102	157	85	113
Ramsay School		315	-	43	54	51	48	46	41	31	-	-	-	-	-	-	1	30
Richmond School		375	-	48	55	56	54	62	58	42	-	-	-	-	-	-	-	21
Rideau Park School		457	-	25	33	35	32	31	32	37	78	74	80	-	-	-	-	35
Simons Valley School		676	-	69	103	101	106	88	99	103	-	-	-	-	-	-	7	25
Sunalta School		373	-	41	56	54	59	55	66	42	-	-	-	-	-	-	-	85
University School		364	-	47	50	55	58	48	49	50	-	-	-	-	-	-	7	24
Vincent Massey School		853	-	-	-	-	-	-	-	-	256	275	289	-	-	-	33	27
West Ridge School		842	-	-	-	-	-	-	143	128	186	193	192	-	-	-	-	25
West Springs School		618	-	115	110	121	128	144	-	-	-	-	-	-	-	-	-	-
Western Canada High School		1,548	-	-	-	-	-	-	-	-	-	-	-	535	512	501	-	85
Western Canada High School	French Immersion	693	-	-	-	-	-	-	-	-	-	-	-	226	256	211	-	6
Westgate School	French Immersion	604	-	80	96	92	79	78	97	82	-	-	-	-	-	-	-	5
Wildwood School		527	-	48	91	70	78	75	56	78	-	-	-	-	-	-	31	30
William Reid School	French Immersion	308	-	68	58	60	71	51	-	-	-	-	-	-	-	-	-	9
AREA 7 TOTAL		20,105	-	1,389	1,658	1,676	1,778	1,593	1,701	1,599	1,327	1,289	1,360	1,509	1,537	1,433	256	999
TOTAL		138,065	-	9,013	10,318	11,004	11,010	10,101	10,533	10,154	10,176	10,008	10,036	10,932	11,138	10,999	2,643	6,011

**CALGARY BOARD OF EDUCATION**

Attachment II

**End-September 2024 enrolment including out-of-attendance area**

Schools highlighted in grey offer full-day kindergarten program.

SCSE = Self Contained Special Ed and represents system classes at the school level such as ACCESS, ALP, CSSI, etc.

SCHOOL		Total	Pre-K*	K	GR1	GR2	GR3	GR4	GR5	GR6	GR7	GR8	GR9	GR10	GR11	GR12	SCSE	OOA
--------	--	-------	--------	---	-----	-----	-----	-----	-----	-----	-----	-----	-----	------	------	------	------	-----

**OUTREACH PROGRAMS (includes NEXUS)**

Discovering Choices	Downtown	321	-	-	-	-	-	-	-	-	-	-	-	-	2	20	291	8
Discovering Choices II	Marlborough	271	-	-	-	-	-	-	-	-	-	-	-	-	-	26	245	-
Start Outreach - Bowness	Bowness	131	-	-	-	-	-	-	-	-	-	-	-	-	-	14	108	9
Westbrook Outreach	Westbrook	155	-	-	-	-	-	-	-	-	-	-	-	-	1	23	131	-
<b>TOTAL OUTREACH PROGRAMS</b>		<b>878</b>	-	-	-	-	-	-	-	-	-	-	-	-	3	83	775	17

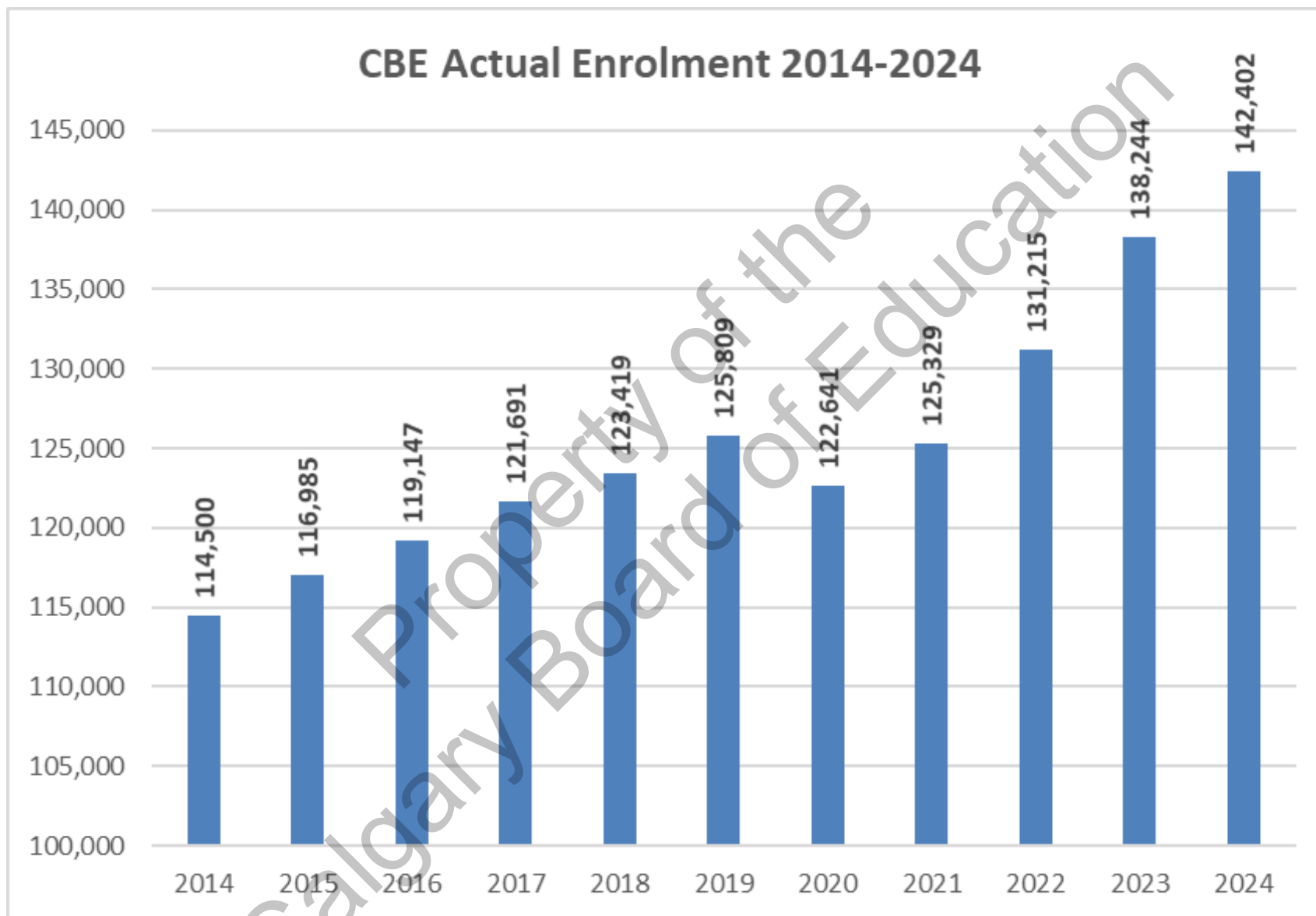
**UNIQUE SETTINGS**

Adolescent Day Treatment Program	5	-	-	-	-	-	-	-	-	-	-	-	-	-	-	3	2	-
Adolescent Mental Health Services	33	-	-	-	1	1	-	2	-	1	1	5	6	12	4	-	-	-
Children's Village School	74	-	-	1	6	10	12	15	12	-	-	-	-	-	-	-	-	18
Christine Meikle School	123	-	-	-	-	-	-	1	1	5	21	20	23	27	25	-	-	-
Dr. Gordon Townsend School	27	-	2	1	2	1	1	2	1	3	6	1	1	1	5	-	-	-
Dr. Oakley School	178	-	-	-	-	5	22	46	43	31	17	6	-	-	-	-	-	8
Emily Follensbee School	87	-	2	10	17	10	10	17	7	10	3	1	-	-	-	-	-	-
Niitsitapi Learning Centre	188	40	65	46	37	-	-	-	-	-	-	-	-	-	-	-	-	-
West View School	38	-	-	-	-	-	-	-	-	1	-	3	8	4	22	-	-	-
William Roper Hull School	105	-	-	2	2	2	5	3	5	14	14	11	17	14	16	-	-	-
Wood's Homes School	56	-	-	-	-	-	-	-	-	2	13	15	7	11	8	-	-	-
<b>TOTAL UNIQUE SETTINGS</b>	<b>914</b>	<b>40</b>	<b>69</b>	<b>60</b>	<b>65</b>	<b>29</b>	<b>50</b>	<b>86</b>	<b>69</b>	<b>67</b>	<b>75</b>	<b>62</b>	<b>62</b>	<b>72</b>	<b>82</b>	<b>26</b>	<b>-</b>	<b>-</b>

Home Education	Windsor Park	403	-	-	37	47	43	45	60	37	46	46	29	5	4	4	-	-
CBe-learn*		1,130	-	-	5	18	18	28	41	40	71	75	103	80	120	531	-	-
Chinook Learning Services*		1,012	-	-	-	-	-	-	-	-	-	-	-	3	8	1,001	-	-
<b>SUB-TOTAL</b>		<b>2,545</b>	-	-	<b>42</b>	<b>65</b>	<b>61</b>	<b>73</b>	<b>101</b>	<b>77</b>	<b>117</b>	<b>121</b>	<b>132</b>	<b>88</b>	<b>132</b>	<b>1,536</b>	<b>-</b>	<b>-</b>
*includes students 20 years old and older																		

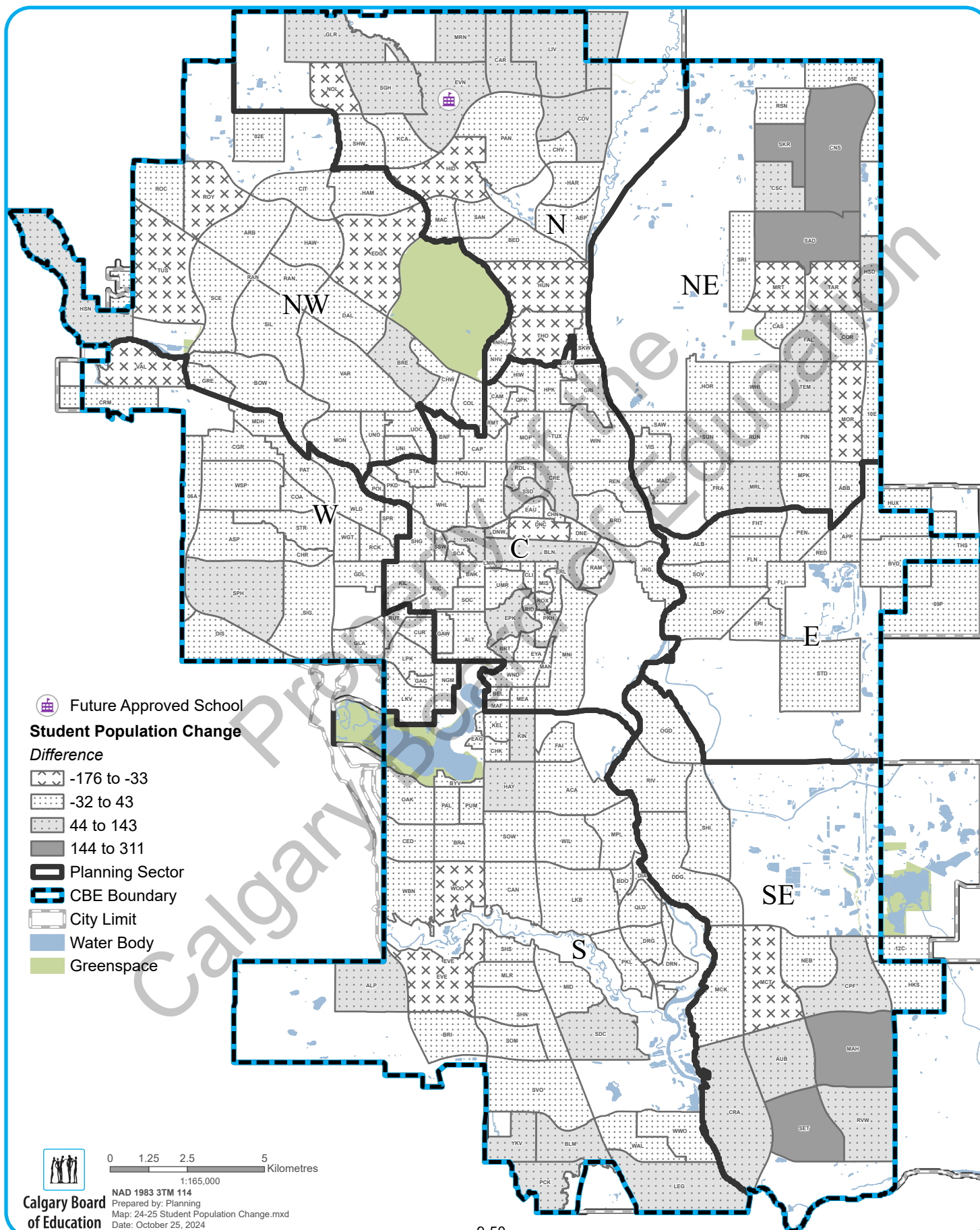
<b>TOTAL ENROLMENT</b>	<b>142,402</b>	<b>40</b>	<b>9,082</b>	<b>10,420</b>	<b>11,134</b>	<b>11,100</b>	<b>10,224</b>	<b>10,720</b>	<b>10,300</b>	<b>10,360</b>	<b>10,204</b>	<b>10,230</b>	<b>11,085</b>	<b>11,425</b>	<b>13,392</b>	<b>2,686</b>	<b>6,011</b>	<b>-</b>
------------------------	----------------	-----------	--------------	---------------	---------------	---------------	---------------	---------------	---------------	---------------	---------------	---------------	---------------	---------------	---------------	--------------	--------------	----------





# Student Population Change (By Community)

## September 29, 2023 to September 27, 2024



## Alternative Program Enrolment by School and by Grade

	Pre-K	K	1	2	3	4	5	6	7	8	9	10	11	12	Total
<b>Alice Jamieson Girls' Academy</b>						13	16	19	21	16	34				119
Stanley Jones School						13	16	19	21	16	34				119
<b>All - Boys School</b>			5	7	6	7	1	7							33
All Boys Program			5	7	6	7	1	7							33
<b>Arts-Centred Learning</b>							75	105	221	223	214				838
Sir John Franklin School							13	18	90	74	74				269
Willow Park School							62	87	131	149	140				569
<b>Chinese (Mandarin) Bilingual</b>		152	171	153	143	128	114	122	101	88	103				1275
Colonel Irvine School							87	102	85	68	87				429
Harold Panabaker School							27	20	16	20	16				99
Highwood School		75	75	73	69	64									356
Marion Carson School		48	52	48	48	43									239
Midnapore School		29	44	32	26	21									152
<b>French Immersion</b>		793	914	893	835	712	746	599	1014	797	778	649	625	580	9935
Banff Trail School		58	74	72	60	62	61								387
Bishop Pinkham School									168	125	135				428
Bob Edwards School									69	55	45				169
Branton School								100	233	180	161				674
Chinook Park School		36	46	44	38	41	28	27							260
David Thompson School							78	58	135	122	94				487
Dr. E. P. Scarlett High School												133	128	104	365
Elboya School							54	63	88	63	81				349
F. E. Osborne School								53	46	39	47				185
Georges P. Vanier School								62	122	107	83				374
Hidden Valley School		49	52	51	55	55									262
Janet Johnstone School		38	42	50	34	29									193
King George School		90	142	126	109	97	100								664
Mayland Heights School		62	52	55	34	34	37	31							305
Sam Livingston School		66	79	92	84	79									400
Sundance School		100	99	87	86	67	65	61							565
Tuscany School		62	67	49	58	45	49								330
Valley Creek School							59	42	56	40	43				240
Varsity Acres School		84	107	115	127	74	88								595
Western Canada High School												226	256	211	693
Westgate School		80	96	92	79	78	97	82							604
William Aberhart High School												290	241	265	796
William Reid School		68	58	60	71	51									308
Woodman School							30	20	97	66	89				302

## Alternative Program Enrolment by School and by Grade

	Pre-K	K	1	2	3	4	5	6	7	8	9	10	11	12	Total
<b>German Bilingual</b>		<b>24</b>	<b>20</b>	<b>31</b>	<b>22</b>	<b>16</b>	<b>20</b>	<b>11</b>							<b>144</b>
Bowcroft School		24	20	31	22	16	20	11							144
<b>Indigenous Focus</b>	<b>40</b>	<b>95</b>	<b>69</b>	<b>68</b>	<b>49</b>	<b>32</b>	<b>30</b>	<b>32</b>							<b>415</b>
Niitsitapi Learning Centre	40	65	46	37											188
Piitoayis Family School		30	23	31	49	32	30	32							227
<b>Montessori</b>		<b>167</b>	<b>180</b>	<b>190</b>	<b>161</b>	<b>115</b>	<b>121</b>	<b>97</b>							<b>1031</b>
Captain John Palliser School		47	57	50	62	37	30	32							315
Killarney School		64	60	66	51	33	43	36							353
Lake Bonavista School		56	63	74	48	45	48	29							363
<b>Science School</b>		<b>231</b>	<b>239</b>	<b>254</b>	<b>251</b>	<b>241</b>	<b>269</b>	<b>332</b>	<b>383</b>	<b>384</b>	<b>353</b>				<b>2937</b>
Ian Bazalgette School									59	54	44				157
Louis Riel School		65	66	66	75	54	54	84	91	94	82				731
Maple Ridge School		74	74	89	76	81									394
R. T. Alderman School							111	144	144	147	133				679
Riverside School		48	51	49	50	56	57	57	89	89	94				640
Valley View School		44	48	50	50	50	47	47							336
<b>Spanish Bilingual</b>		<b>431</b>	<b>449</b>	<b>462</b>	<b>423</b>	<b>388</b>	<b>354</b>	<b>277</b>	<b>258</b>	<b>194</b>	<b>273</b>	<b>82</b>	<b>69</b>	<b>82</b>	<b>3742</b>
A. E. Cross School									21	12	27				60
Canyon Meadows School		74	80	86	71	62	83								456
Collingwood School		85	88	90	82	83	74								502
Crescent Heights High School												82	69	82	233
Dalhousie School		86	82	77	74	83	73								475
Eugene Coste School		69	68	75	64	67	38								381
Glenmeadows School		56	73	72	73	43	37	35							389
Robert Warren School								88	77	59	83				307
Senator Patrick Burns School								154	160	123	163				600
W. O. Mitchell School		61	58	62	59	50	49								339
<b>Traditional Learning Centre</b>		<b>664</b>	<b>704</b>	<b>730</b>	<b>752</b>	<b>737</b>	<b>740</b>	<b>741</b>	<b>714</b>	<b>700</b>	<b>607</b>				<b>7089</b>
Annie Gale School								58	61	69	53				241
Balmoral School							120	118	118	108	109				573
Brentwood School		124	125	125	125	103	114	99							815
Chief Justice Milvain School		50	48	74	75	76	53								376
Chris Akkerman School		102	100	106	103	120	120								651
Colonel Macleod School							94	95	94	92	79				454
Colonel Sanders School			99	96	104	94									393
Dr. J. K. Mulloy School		105	110	103	104	104									526
Fairview School						156	155	161	156	151	132				911
Glamorgan School		86	78	77	84	84	84	87	64	64	55				763
Le Roi Daniels School		131	144	149	157										581
Sir Wilfrid Laurier School								123	126	123	100				472
Thomas B. Riley School									95	93	79				267
Thorncliffe School		66													66
<b>Grand Total</b>	<b>40</b>	<b>2557</b>	<b>2751</b>	<b>2788</b>	<b>2642</b>	<b>2389</b>	<b>2486</b>	<b>2342</b>	<b>2712</b>	<b>2402</b>	<b>2362</b>	<b>731</b>	<b>694</b>	<b>662</b>	<b>27558</b>

**CALGARY BOARD OF EDUCATION  
SPECIALIZED CLASSES 2024-2025**

Area	School	Program	# of Classes
1	Arbour Lake (6-9)	Learning & Literacy	2
1	Arbour Lake (6-9)	The Class	1
1	Belvedere Parkway (K-6)	Bridges	1
1	Bowness (10-12)	Paced Learning Program (PLP)	1
1	Captain John Palliser (K-6)	Learning & Literacy	1
1	Discovering Choices	Nexus	3
1	H.D. Cartwright (7-9)	Attitude, Community Competence, Elements (of Academic Curriculum), Social Skills (ACCESS)	1
1	H.D. Cartwright (7-9)	Learning & Literacy	1
1	Ranchlands (K-6)	Bridges	1
1	Ranchlands (K-6)	Paced Learning Program (PLP)	1
1	Robert Thirsk (10-12)	Adapted Learning Program (ALP)	1
1	Robert Thirsk (10-12)	Communication, Sensory and Social Interaction (CSSI)	1
1	Robert Thirsk (10-12)	Paced Learning Program (PLP)	1
1	Robert Thirsk (10-12)	Teaching of Attitude, Social Skills and Communication (TASC)	1
1	Sir Winston Churchill (10-12)	The Class	1
1	Terrace Road (K-6)	Paced Learning Program (PLP)	1
1	Thomas B. Riley (7-9)	Adapted Learning Program (ALP)	1
1	Thomas B. Riley (7-9)	Paced Learning Program (PLP)	1
1	Tuscany (K-5)	Enhanced Educational Supports (EES)	2
1	West Dalhousie (K-6)	Enhanced Educational Supports (EES)	2
1	William D. Pratt (5-9)	Communication, Sensory and Social Interaction (CSSI)	1
2	Beddington Heights (K-6)	The Class	1
2	Branton (6-9)	Attitude, Community Competence, Elements (of Academic Curriculum), Social Skills (ACCESS)	1
2	Branton (6-9)	Communication, Sensory and Social Interaction (CSSI)	1
2	Buchanan (K-6)	Enhanced Educational Supports (EES)	2
2	Cambrian Heights (K-6)	Bridges	1
2	Children's Village	Enhanced Educational Supports II	3
2	Colonel Irvine (5-9)	Bridges	1
2	Georges P. Vanier (6-9)	Learning & Literacy	2
2	Huntington Hills (K-6)	Learning & Literacy	1
2	James Fowler High (10-12)	Literacy, English & Academic Development (LEAD)	4
2	James Fowler High (10-12)	Paced Learning Program (PLP)	2
2	James Fowler High (10-12)	The Class	1
2	Kenneth D Taylor (K-4)	Enhanced Educational Supports (EES)	2
2	North Haven (K-6)	Paced Learning Program (PLP)	2
2	Panorama Hills (K-5)	Enhanced Educational Supports (EES)	3
2	Senator Patrick Burns (6-9)	Paced Learning Program (PLP)	1
2	Sir John A. Macdonald (7-9)	Adapted Learning Program (ALP)	1
2	Sir John A. Macdonald (7-9)	Paced Learning Program (PLP)	1
2	Sir John Franklin (5-9)	Communication, Sensory and Social Interaction (CSSI)	2
2	Sir John Franklin (5-9)	Literacy, English & Academic Development (LEAD)	6
2	Sir John Franklin (5-9)	Teaching of Attitude, Social Skills and Communication (TASC)	1
2	William Aberhart High (10-12)	Adapted Learning Program (ALP)	2
2	William Aberhart High (10-12)	Attitude, Community Competence, Elements (of Academic Curriculum), Social Skills (ACCESS)	1
2	William Aberhart High (10-12)	Communication, Sensory and Social Interaction (CSSI)	1
2	William Aberhart High (10-12)	Paced Learning Program (PLP)	1
3	Abbeydale (K-6)	Enhanced Educational Supports (EES)	1
3	Belfast (K-6)	Literacy, English & Academic Development (LEAD) Div. II	2
3	Cappy Smart (K-6)	Enhanced Educational Supports (EES)	3
3	Colonel Macleod (5-9)	Bridges	1
3	Colonel Macleod (5-9)	Literacy, English & Academic Development (LEAD) Div III	2
3	Crescent Heights High (10-12)	Bridges	1
3	Crescent Heights High (10-12)	Literacy, English & Academic Development (LEAD)	3
3	Crescent Heights High (10-12)	Paced Learning Program (PLP)	1
3	Crescent Heights High (10-12)	The Class	2
3	Dr. Gladys M. Egbert (7-9)	Paced Learning Program (PLP)	2
3	Erin Woods (K-6)	Bridges	2
3	Erin Woods (K-6)	Enhanced Educational Supports (EES)	1
3	Ernest Morrow (7-9)	Bridges	1
3	Ernest Morrow (7-9)	Literacy, English & Academic Development (LEAD)	3
3	Ernest Morrow (7-9)	Paced Learning Program (PLP)	3
3	Forest Lawn High (10-12)	Literacy, English & Academic Development (LEAD)	5
3	Forest Lawn High (10-12)	Paced Learning Program (PLP)	2
3	Forest Lawn High (10-12)	The Class	1
3	Jack James (10-12)	Paced Learning Program (PLP)	1
3	Jack James (10-12)	RISE	1

**CALGARY BOARD OF EDUCATION  
SPECIALIZED CLASSES 2024-2025**

Area	School	Program	# of Classes
3	Mount View (K-6)	Literacy, English & Academic Development (LEAD) Div. II	2
3	Niitsitapi Learning Centre (K-2)	Indigenous Forward Preschool	4
3	North Trail High (10-12)	Communication, Sensory and Social Interaction (CSSI)	2
3	North Trail High (10-12)	Literacy, English & Academic Development (LEAD) Div IV	2
3	Nose Creek (6-9)	Communication, Sensory and Social Interaction (CSSI)	1
3	Nose Creek (6-9)	Paced Learning Program (PLP)	2
3	Penbrooke Meadows (K-6)	Literacy, English & Academic Development (LEAD)	3
3	Riverside (K-9)	Attitude, Community Competence, Elements (of Academic Curriculum), Social Skills (ACCESS)	1
3	Roland Michener (K-6)	Bridges	1
3	Roland Michener (K-6)	Paced Learning Program (PLP)	1
3	Rosemont (K-6)	Bridges	1
3	Valley Creek (5-9)	Communication, Sensory and Social Interaction (CSSI)	1
3	Valley Creek (5-9)	Teaching of Attitude, Social Skills and Communication (TASC)	1
3	Valley Creek (5-9)	The Class	1
3	Vista Heights (K-6)	Learning & Literacy	2
3	West Dover (K-6)	Enhanced Educational Supports (EES)	2
4	Annie Gale (6-9)	Learning & Literacy	2
4	Bob Edwards (6-9)	RISE	1
4	Cecil Swanson (K-6)	Bridges	1
4	Cecil Swanson (K-6)	Enhanced Educational Supports (EES)	1
4	Clarence Sansom (7-9)	Adapted Learning Program (ALP)	1
4	Clarence Sansom (7-9)	Attitude, Community Competence, Elements (of Academic Curriculum), Social Skills (ACCESS)	2
4	Crossing Park (K-9)	Attitude, Community Competence, Elements (of Academic Curriculum), Social Skills (ACCESS)	1
4	Dr. Gordon Higgins (7-9)	Paced Learning Program (PLP)	2
4	Falconridge (K-6)	Enhanced Educational Supports (EES)	2
4	Hugh A. Bennett (K-4)	Enhanced Educational Supports (EES)	1
4	Lester B. Pearson High (10-12)	Adapted Learning Program (ALP)	1
4	Lester B. Pearson High (10-12)	Attitude, Community Competence, Elements (of Academic Curriculum), Social Skills (ACCESS)	1
4	Monterey Park (K-6)	Enhanced Educational Supports (EES)	3
4	Nelson Mandela High (10-12)	Communication, Sensory and Social Interaction (CSSI)	1
4	Nelson Mandela High (10-12)	Literacy, English & Academic Development (LEAD) Div IV	1
4	Nelson Mandela High (10-12)	Paced Learning Program (PLP)	2
4	O.S. Geiger (K-6)	Enhanced Educational Supports (EES)	2
4	O.S. Geiger (K-6)	Paced Learning Program (PLP)	1
4	Peter Lougheed (5-9)	Learning & Literacy	1
4	Pineridge (K-6)	Enhanced Educational Supports (EES)	4
4	Sir Wilfred Laurier (6-9)	Communication, Sensory and Social Interaction (CSSI)	1
4	Ted Harrison (5-9)	Communication, Sensory and Social Interaction (CSSI)	1
4	Ted Harrison (5-9)	Paced Learning Program (PLP)	1
4	Terry Fox (7-9)	Bridges	1
4	Terry Fox (7-9)	Literacy, English & Academic Development (LEAD)	3
4	Terry Fox (7-9)	The Class	1
5	Auburn Bay (K-4)	Enhanced Educational Supports (EES)	2
5	Centennial High (10-12)	Attitude, Community Competence, Elements (of Academic Curriculum), Social Skills (ACCESS)	1
5	Centennial High (10-12)	Communication, Sensory and Social Interaction (CSSI)	1
5	Centennial High (10-12)	Paced Learning Program (PLP)	1
5	Centennial High (10-12)	The Class	1
5	Deer Run (K-6)	Bridges	2
5	Lord Beaverbrook High (10-12)	Adapted Learning Program (ALP)	2
5	Lord Beaverbrook High (10-12)	Communication, Sensory and Social Interaction (CSSI)	1
5	Lord Beaverbrook High (10-12)	Paced Learning Program (PLP)	2
5	Lord Beaverbrook High (10-12)	The Class	1
5	McKenzie Highland (4-9)	Learning & Literacy	3
5	McKenzie Lake (K-5)	Enhanced Educational Supports (EES)	2
5	McKenzie Towne (K-4)	Enhanced Educational Supports (EES)	3
5	Midsun (7-9)	Adapted Learning Program (ALP)	1
5	Midsun (7-9)	Attitude, Community Competence, Elements (of Academic Curriculum), Social Skills (ACCESS)	1
5	Midsun (7-9)	Communication, Sensory and Social Interaction (CSSI)	1
5	Midsun (7-9)	Teaching of Attitude, Social Skills and Communication (TASC)	1
5	Mountain Park (6-9)	Communication, Sensory and Social Interaction (CSSI)	1
5	Mountain Park (6-9)	The Class	1
5	Samuel W. Shaw (5-9)	Paced Learning Program (PLP)	2
5	Wilma Hansen (5-9)	Bridges	1
5	Wilma Hansen (5-9)	Paced Learning Program (PLP)	1
6	A.E. Cross (7-9)	Paced Learning Program (PLP)	2
6	Alternative High (10-12)	The Class	2



**CALGARY BOARD OF EDUCATION  
SPECIALIZED CLASSES 2024-2025**

Area	School	Program	# of Classes
6	Cedarbrae (K-6)	Bridges	1
6	Central Memorial High (10-12)	Bridges	1
6	Central Memorial High (10-12)	Communication, Sensory and Social Interaction (CSSI)	1
6	Central Memorial High (10-12)	Teaching of Attitude, Social Skills and Communication (TASC)	1
6	Ethel M. Johnson (K-6)	Enhanced Educational Supports (EES)	2
6	Ethel M. Johnson (K-6)	Learning & Literacy	1
6	Ethel M. Johnson (K-6)	Paced Learning Program (PLP)	1
6	Evergreen (K-5)	Enhanced Educational Supports (EES)	2
6	Harold Panabaker (5-9)	Adapted Learning Program (ALP)	1
6	Harold Panabaker (5-9)	Learning & Literacy	1
6	Henry Wise Wood (10-12)	Attitude, Community Competence, Elements (of Academic Curriculum), Social Skills (ACCESS)	1
6	Henry Wise Wood (10-12)	Gifted and Talented Education (GATE)	4
6	Henry Wise Wood (10-12)	Literacy, English & Academic Development (LEAD)	1
6	Henry Wise Wood (10-12)	Paced Learning Program (PLP)	1
6	John Ware (7-9)	The Class	1
6	Louis Riel (K-9)	Gifted and Talented Education (GATE II/III)	9
6	Marshall Springs (6-9)	Communication, Sensory and Social Interaction (CSSI)	1
6	Nickle (6-9)	Bridges	1
6	Nickle (6-9)	Learning & Literacy	2
6	Ron Southern (K-6)	Enhanced Educational Supports (EES)	2
6	Sherwood (4-9)	Literacy, English & Academic Development (LEAD) Div III	1
7	Battalion Park (K-6)	Enhanced Educational Supports (EES)	2
7	Bishop Pinkham (6-9)	Communication, Sensory and Social Interaction (CSSI)	1
7	Dr. Oakley (K-9)	HERA	1
7	Earl Grey (K-6)	Learning & Literacy	1
7	Ernest Manning High (10-12)	Paced Learning Program (PLP)	1
7	Hillhurst (K-6)	Gifted and Talented Education (GATE)	5
7	Jennie Elliott (K-6)	Deaf and Hard of Hearing	4
7	Mount Royal (7-9)	Teaching of Attitude, Social Skills and Communication (TASC)	1
7	Queen Elizabeth High (7-12)	Deaf and Hard of Hearing (III/IV)	5
7	Queen Elizabeth High (7-12)	Gifted and Talented Education (GATE III/IV)	8
7	Queen Elizabeth High (7-12)	The Class	3
7	Simons Valley (K-6)	Enhanced Educational Supports (EES)	1
7	University (K-6)	Enhanced Educational Supports (EES)	1
7	Vincent Massey (7-9)	Bridges	1
7	Vincent Massey (7-9)	Learning & Literacy	1
7	Vincent Massey (7-9)	Literacy, English & Academic Development (LEAD)	1
7	Wildwood (K-6)	Enhanced Educational Supports (EES)	2
7	Wildwood (K-6)	Paced Learning Program (PLP)	1

**TOTAL CLASSES 286**

## Enrolment in Specialized Classes by School and by Grade

	Pre-K	K	1	2	3	4	5	6	7	8	9	10	11	12	Total
<b>ACCESS</b>								2	28	22	25	12	23	19	131
Branton School									6						6
Centennial High School												3	3	6	12
Clarence Sansom School								2	4	7	11				24
Crossing Park School									7	2	2				11
H. D. Cartwright School									1	6	5				12
Henry Wise Wood High School													5	3	8
Lester B. Pearson High School												6	5	3	14
MidSun School									6	4	5				15
Riverside School									4	3	2				9
William Aberhart High School												3	10	7	20
<b>ALP (Adapted Learning Program)</b>								1	22	21	21	24	28	24	141
Clarence Sansom School									4	2	7				13
Harold Panabaker School								1	3	5					9
Lester B. Pearson High School												3	9	2	14
Lord Beaverbrook High School												10	7	9	26
MidSun School									6	3	4				13
Robert Thirsk High School												4	6	5	15
Sir John A. Macdonald School									4	7	4				15
Thomas B. Riley School									5	4	5				14
William Aberhart High School												1	7	6	22
<b>Bridges</b>			1	9	14	27	22	21	15	20	22	11	7	5	174
Belvedere Parkway School			1		3	3		3							10
Cambrian Heights School				1	1	3	2	1							8
Cecil Swanson School			1	2	2	3	2								10
Cedarbrae School			1	2			1	4							8
Central Memorial High School												7	3	3	13
Colonel Irvine School									4	5	2				11
Colonel Macleod School									2	2	5				9
Crescent Heights High School												4	4	2	10
Deer Run School				5	1	5	1	4							16
Erin Woods School					1	7	5	5							18
Ernest Morrow School									3	2	5				10
Nickle School									2	3	4				9
Ranchlands School						2	3	1							6
Roland Michener School			1	3	3	3									10
Rosemont School					1	2	4	1							8
Terry Fox School									2	1	2				5
Vincent Massey School									2	2	1				5
Wilma Hansen School										5	3				8

## Enrolment in Specialized Classes by School and by Grade

	Pre-K	K	1	2	3	4	5	6	7	8	9	10	11	12	Total
<b>CSSI</b>								<b>1</b>	<b>19</b>	<b>31</b>	<b>14</b>	<b>19</b>	<b>15</b>	<b>9</b>	<b>108</b>
Bishop Pinkham School									2	2	1				5
Branton School									4	2					6
Centennial High School													3	3	6
Central Memorial High School												1		2	3
Lord Beaverbrook High School												5	1		6
Marshall Springs School									1	3	1				5
MidSun School									1	4	1				6
Mountain Park School								1	3	1					5
Nelson Mandela High School												4	1		5
North Trail High School												5	5	2	12
Nose Creek School										6					6
Robert Thirsk High School												3	1	1	5
Sir John Franklin School									3	5	1				9
Sir Wilfrid Laurier School									1	3	1				5
Ted Harrison School									2	1	3				6
Valley Creek School										2	4				6
William Aberhart High School												1	4	1	6
William D. Pratt School									2	2	2				6
<b>DHH (Deaf and Hard of Hearing)</b>			<b>7</b>	<b>5</b>	<b>6</b>	<b>5</b>	<b>9</b>	<b>7</b>	<b>5</b>	<b>9</b>	<b>7</b>	<b>9</b>	<b>8</b>	<b>12</b>	<b>89</b>
Jennie Elliott School			7	5	6	5	9	7							39
Queen Elizabeth High School									5	9	7	9	8	12	50
<b>EES (Enhanced Educational Supports)</b>			<b>59</b>	<b>97</b>	<b>87</b>	<b>77</b>	<b>67</b>	<b>57</b>							<b>444</b>
Abbeydale School				7			2								9
Auburn Bay School			3	2	7		4	1							17
Battalion Park School			4	4	3		3	3							17
Buchanan School				3	4	4	4	3							18
Cappy Smart School			4	3	7	7	4	3							28
Cecil Swanson School			2	1	1	1		3							8
Children's Village School				2	4	3	5	4							18
Erin Woods School			5	3											8
Ethel M. Johnson School			1	2	6	5	2	2							18
Evergreen School			1	7	4	2	3								17
Falconridge School			5	4	4		2	3							18
Hugh A. Bennett School			1	4		3	1								9
Kenneth D. Taylor School			3	4	4	4	3								18
McKenzie Lake School			1	3	6	4	1	3							18
McKenzie Towne School			4	3	2	6	3	9							27
Monterey Park School				8	7	5	2	3							25
O. S. Geiger School			2	4	2	4	2	2							16
Panorama Hills School			4	7	5	2	5	3							26
Pineridge School			5	4	7	11	3	4							34
Ron Southern School			3	6	4	2	1	2							18
Simons Valley School			1	1		1	2	2							7
Tuscany School				2	3	2	6	3							16
University School			1	1		1	3	1							7
West Dalhousie School			3	3	3	2	3	1							15
West Dover School			3	4	1	6	1								15
Wildwood School			3	5	3	2	2	2							17

## Enrolment in Specialized Classes by School and by Grade

	Pre-K	K	1	2	3	4	5	6	7	8	9	10	11	12	Total
<b>GATE</b>						<b>32</b>	<b>69</b>	<b>61</b>	<b>48</b>	<b>56</b>	<b>92</b>	<b>41</b>	<b>39</b>	<b>49</b>	<b>487</b>
Henry Wise Wood High School												25	20	36	81
Hillhurst School						19	43	34							96
Louis Riel School						13	26	27	21	18	55				160
Queen Elizabeth High School									27	38	37	16	19	13	150
<b>HERA</b>										<b>2</b>	<b>1</b>	<b>1</b>	<b>1</b>	<b>3</b>	<b>8</b>
Dr. Oakley School										2	1	1	1	3	8
<b>L&amp;L</b>						<b>9</b>	<b>44</b>	<b>50</b>	<b>77</b>	<b>71</b>	<b>66</b>				<b>317</b>
Annie Gale School									8	10	9				27
Arbour Lake School									11	12	11				34
Captain John Palliser School						2	6	8							16
Earl Grey School							9	6							15
Ethel M. Johnson School						2	6	8							16
Georges P. Vanier School									12	9	9				30
H. D. Cartwright School									5	6	8				19
Harold Panabaker School									5	5	6				16
Huntington Hills School						2	5	5							12
McKenzie Highlands School						1	10	12	13	6	1				43
Nickle School									6	11	14				31
Peter Lougheed School									8	6	2				16
Vincent Massey School									9	6	6				21
Vista Heights School						2	8	11							21
<b>LEAD</b>						<b>11</b>	<b>48</b>	<b>39</b>	<b>46</b>	<b>38</b>	<b>41</b>	<b>54</b>	<b>39</b>	<b>63</b>	<b>379</b>
Belfast School						5	14	11							30
Colonel Macleod School									3	5	4				12
Crescent Heights High School												8	2	9	19
Ernest Morrow School									10	5	9				24
Forest Lawn High School												14	17	28	59
Henry Wise Wood High School												3	4	5	12
James Fowler High School												13	9	13	35
Mount View School						3	7	5							15
Nelson Mandela High School												10	1	5	16
North Trail High School												6	6	3	15
Penbrooke Meadows School						3	10	9							22
Sherwood School									1	2	1				4
Sir John Franklin School							17	14	15	11	8				65
Terry Fox School									16	14	14				44
Vincent Massey School									1	1	5				7
<b>NEXUS</b>												<b>3</b>	<b>7</b>	<b>7</b>	<b>17</b>
Discovering Choices													3	5	8
START Outreach												3	4	2	9

## Enrolment in Specialized Classes by School and by Grade

	Pre-K	K	1	2	3	4	5	6	7	8	9	10	11	12	Total
<b>PLP</b>						<b>13</b>	<b>41</b>	<b>56</b>	<b>86</b>	<b>88</b>	<b>82</b>	<b>87</b>	<b>81</b>	<b>58</b>	<b>592</b>
A. E. Cross School									8	16	6				30
Bowness High School												3	5	4	12
Centennial High School												7	7	3	17
Crescent Heights High School												4	4	1	9
Dr. Gladys McKelvie Egbert School									13	5	10				28
Dr. Gordon Higgins School									12	11	9				32
Ernest Manning High School												4	5	4	13
Ernest Morrow School									8	15	16				39
Ethel M. Johnson School						1	6	7							14
Forest Lawn High School												14	11	10	35
Henry Wise Wood High School												8	1	2	11
Jack James High School												6	5	5	16
James Fowler High School												12	10	7	29
Lord Beaverbrook High School												11	10	7	28
Nelson Mandela High School												12	13	9	34
North Haven School						6	11	10							27
Nose Creek School									3	8	8	11			30
O. S. Geiger School						1	7	6							14
Ranchlands School						1	6	6							13
Robert Thirsk High School												6	9	3	18
Roland Michener School							2	13							15
Samuel W. Shaw School							1	4	7	11	6				29
Senator Patrick Burns School									5	6	5				16
Sir John A. Macdonald School									8	2	6				16
Ted Harrison School								1	6	3	6				16
Terrace Road School						1	2	1							4
Thomas B. Riley School									5	5	5				15
Wildwood School						3	6	5							14
William Aberhart High School													1	3	4
Wilma Hansen School									6	6	2				14
<b>RISE</b>									<b>4</b>	<b>3</b>	<b>5</b>	<b>6</b>	<b>5</b>	<b>4</b>	<b>27</b>
Bob Edwards School									4	3	5				12
Jack James High School												6	5	4	15
<b>TASC</b>									<b>6</b>	<b>5</b>	<b>9</b>	<b>5</b>	<b>3</b>	<b>2</b>	<b>30</b>
Central Memorial High School												4	1		5
MidSun School										1	5				6
Mount Royal School									3	1					4
Robert Thirsk High School												1	2	2	5
Sir John Franklin School									3		1				4
Valley Creek School										3	3				6

## Enrolment in Specialized Classes by School and by Grade

	Pre-K	K	1	2	3	4	5	6	7	8	9	10	11	12	Total
The Class						1	4	5	13	21	38	48	63	36	229
Alternative High School												9	10	8	27
Arbour Lake School									2	2	6				10
Beddington Heights School						1	4	5							10
Centennial High School												4	8	4	16
Crescent Heights High School												9	14	8	31
Forest Lawn High School												3	8	3	14
James Fowler High School													7	7	14
John Ware School									3	4	3				10
Lord Beaverbrook High School												5	6	5	16
Mountain Park School									1	2	8				11
Queen Elizabeth High School									3	8	11	12	1		35
Sir Winston Churchill High School												6	9	1	16
Terry Fox School									1	4	3				8
Valley Creek School									3	1	7				11
<b>Grand Total</b>															

67 111 107 175 304 300 369 387 423 320 319 291 3173



## | appendix | Specialized Classes Definitions

### Specialized Classes

#### **ACCESS - Adaptive Functioning, Communication, Community Engagement, Social Skills**

The Attitude, Community Competence, Elements of Academic Curriculum, Social Skills (ACCESS) class provides educational programming for students in grades 7-12 with moderate to severe cognitive disabilities and low to extremely low adaptive skills. The curriculum is modified to support the personalization of learning according to the unique strengths and needs of each student. Students receive modified programming that focuses on building foundational skills in functional academics, communication, social interaction, leisure skills, vocational skills and skills for self-regulation. The instructional team includes a teacher, education assistant(s) and a lunchroom supervisor. Additional supports from multi-disciplinary team members may include consultation and collaboration with behaviour support workers, specialists, strategists, occupational therapists, speech-language pathologists, physiotherapists and psychologists.

#### **ALP - Adapted Learning Program**

The Adapted Learning Program (ALP) provides educational programming for students in grades 7-12 with moderate cognitive disabilities and low to extremely low adaptive skills. ALP programming focuses on building foundational skills in functional academics, communication, social interaction, leisure skills, vocational skills and skills for self-regulation. The curriculum is modified to support the personalization of learning according to the unique strengths and needs of each student. The instructional team includes a teacher and education assistant(s). Additional supports from multi-disciplinary team members may include consultation and collaboration with behaviour support workers, specialists, strategists, occupational therapists, speech-language pathologists, physiotherapists and psychologists.

#### **CSSI - Communication, Sensory, Social Interaction**

The Communication, Sensory, Social Skills and Integration (CSSI) class provides educational programming for students with multiple and complex learning, behaviour, and communication needs in grades 7-12. Students receive modified programming that focuses on building foundational skills in functional academics, communication, social interaction, leisure skills, vocational skills, and skills for self-regulation. The curriculum is modified to support the personalization of learning according to the unique strengths and needs of each student. The instructional team includes a teacher, education assistants and a lunchroom supervisor. Additional supports from multi-disciplinary team members may include consultation and collaboration with behaviour support workers, specialists, strategists, occupational therapists, speech-language pathologists, physiotherapists and psychologists.

## EES - Enhanced Educational Supports

The Enhanced Educational Supports (EES) class provides educational programming for students in grades 1-6 with moderate to severe developmental disabilities. The EES class focuses on building foundational skills in functional academics, communication, social interaction, leisure skills, functional living skills, and skills for self-regulation. The curriculum is modified to support the personalization of learning according to the unique strengths and needs of each student. The classroom team includes a teacher, education assistants and a lunchroom supervisor. Additional supports from multi-disciplinary team members may include consultation and collaboration with behaviour support workers, specialists, strategists, occupational therapists, speech-language pathologists, physiotherapists, and psychologists.

## PLP - Paced Learning Program

The Paced Learning Program (PLP) provides educational programming for students in grades 4 to 12 who have been diagnosed as having a mild intellectual disability and below average to low average adaptive functioning (e.g., social, communication, practical daily living). In PLP, students access the Alberta Program of Studies with adaptations to learning outcomes as appropriate to each individual. Additional areas of focus for learning include communication, social interaction, leisure skills, self-regulation skills, functional living skills, and vocational skills. Programming is personalized to support the unique strengths and needs of each student. The classroom team includes a teacher and an educational assistant, and additional supports may be provided in consultation with a multidisciplinary team.

## TASC - Teaching of Adaptive, Social and Communication Skills

The Teaching of Attitude, Social and Communication Skills (TASC) class provides educational programming for students in grades 7-12 who have been diagnosed with moderate to severe developmental disabilities. Students receive modified programming that focuses on building foundational skills in functional academics, communication, social interaction, leisure skills, and skills, vocational skills for self-regulation. The curriculum is modified to support the personalization of learning according to the unique strengths and needs of each student. The classroom team consists of a teacher, educational assistants and a lunchroom supervisor. Additional supports from multi-disciplinary team members includes consultation and collaboration with behaviour support workers, specialists, strategists, occupational therapists, speech-language pathologists, physiotherapists and psychologists.

## Deaf and Hard of Hearing (DHH)

The Deaf and Hard of Hearing (DHH) class offers support provides educational programming for students in grades 1-12 whose hearing loss significantly impacts their language development and learning. DHH classes offer unique educational environments, including direct English language instruction, communicative supports and services. Curriculum adaptations, instructional accommodations, integration opportunities and learning technologies are personalized based on each student's strengths and needs.

Programming options for DHH students include communication and instruction through Aural/Oral and/or Bilingual approaches:

### Aural/Oral Approach

This approach emphasizes the use of hearing technology, residual hearing, speech, speech-reading, written English, and visual supports. The primary goal is to develop skills in listening and spoken language, reading and writing, and self-advocacy. Aural/Oral programming is recommended for families who prefer their children to learn through aural methods of input (listening to English) and oral expression (speaking).

## Bi-lingual - ASL/English Approach

This approach emphasizes the use of American Sign Language (ASL) for language learning. The primary goal is to optimize students' communication abilities in ASL alongside English literacy and numeracy skills. Students may utilize personal technology and FM/DM systems. ASL/English programming is recommended for families who prefer their children to learn through direct instruction in American Sign Language, or for students who require sign language to communicate.

## Literacy, English and Academic Development (LEAD)

Students identified as EAL (English as an Additional Language) learners, who have limited formal school experiences may access a specialized program called Literacy, English and Academic Development (LEAD). The offer of placement for LEAD is made through the Welcome Centre, at the time of initial registration; placement offers are made throughout the year.

LEAD students are supported by intensive programming focused on literacy, numeracy, and English language development (ELD). Students may have limited skills in home language literacy and numeracy, and most have not started to acquire English language skills. Interventions (academic and social/emotional) are provided for students who may be at risk of disengaging from school. The goal of the program is to make significant educational gains over a 20-month period so students can successfully transition into mainstream classrooms.

A LEAD Program is not a remedial program for EAL learners. LEAD is not offered to students with formal school experience or who have already acquired age/grade appropriate home language literacy and academic knowledge.

### Learner Profile:

- Refugee or newcomer status
- age appropriate for grades 4-12
- limited, interrupted, or no school experience
- limited literacy and numeracy skills in home language
- limited literacy and numeracy skills in English
- may have complex social and emotional needs

## Gifted and Talented (GATE)

Alberta Education describes giftedness as exceptional performance and/or potential in learning rate, depth of knowledge, reasoning and problem-solving abilities when compared with others of the same age, experience and environment. Giftedness presents across a wide range of abilities: general intellectual, specific academic, creative thinking, social, musical, artistic, kinesthetic. (Alberta Education, 2004). Educational programming in the GATE class centers on the application of higher level thinking skills while offering opportunities to explore areas of particular interest, strength or need.

## Learning & Literacy (L&L)

The Learning and Literacy (L&L) class provides educational programming for students in grades 4 to 9 who have been identified with Learning Disabilities impacting reading acquisition. Students diagnosed with a Specific Learning Disorder with impairment in reading can also be referred when there are indications that they are able to leverage supports through spoken language.

The goal of L&L is to assist each student gaining skills, knowledge, and competencies in reaching their academic, social, and emotional potential. The emphasis for instruction is on developing literacy skills (reading and writing) within an inclusive classroom environment. Inclusive learning technologies, curriculum design, accommodations, and all key components of programming for students with learning disabilities are implemented based on each student's individual needs.

## Mental Health and Wellness

### Bridges

The Bridges class provides educational programming for students in grades 1-12 who present with complex and severe mental health challenges and overt, dysregulated behaviours significantly impacting their academic engagement and well-being. Educational programming focuses on building both social-emotional and academic competencies through the utilization of a continuum of support and services. Social-Emotional Learning instruction is aligned with CASEL's competencies as identified within the CBE's Well-Being Framework.

The classroom team includes a teacher and a Bridges Support Worker. Students receive additional support through consultation and collaboration with a multi-disciplinary team, including system specialists, area strategists, school-family liaisons, and psychologists. As individual students develop and practice their social-emotional skills and demonstrate readiness, support is provided to transition them toward partial or complete integration into their community school.

### The Class

The Class provides educational programming for students in grades 4-12 who present with complex and severe mental health challenges and internalized, dysregulated behaviours significantly impacting their academic engagement and well-being. Social-emotional instruction in The Class emphasizes self-awareness, self-regulation, peer and social relationship skills, and strategies for engaging in academic learning. Social-Emotional Learning instruction is aligned with CASEL's competencies as identified within the CBE's Well-Being Framework.

The classroom team includes a teacher and a Behaviour Support Worker. Students receive additional support through consultation and collaboration with a multi-disciplinary team, including system specialists, area strategists, school-family liaisons, and psychologists. As individual students develop and practice their social-emotional skills and demonstrate readiness, support is provided to transition them toward partial or complete integration into their community school.

### RISE

Reaching Independence through Support and Education (RISE) provides educational programming for students in grades 6-12 who have significant complex internalizing mental health disorders which severely impair functioning. The goal of the program is to build on strengths as well as identify and address barriers to mental well-being, school engagement and academic success. Academic programming is personalized based on individual student needs and readiness. Program staff includes one teacher and behaviour support worker, Recovery Alberta for therapeutic support and consultation, and a Wood's Homes Family Support Counsellor who is available to support student families in their homes.

# School Capacity and Utilization 2024 - 2025

Attachment IX

- i. The provincial utilization rate of each school building includes lease exemptions as of September 1 of the current year
- ii. Weighted Enrolment = (Kindergarten minus Kindergarten Special Education Severe) divided by 2) + (Kindergarten Special Education Severe multiplied by 1.5) + (GR 1-12 enrolment minus GR1-12 Special Education Severe) + (GR1-12 Special Education Severe multiplied by 3)
- iii. Utilization Rate = Weighted Enrolment divided by Provincial Capacity
- iv. \*Capacity values are given as calculated under the Instructional Area Method, currently prescribed by the Province of Alberta

SCHOOL	2023 WEIGHTED ENROLMENT	2023 PROVINCIAL % UTILIZ.	2024 WEIGHTED ENROLMENT	2024* PROVINCIAL CAPACITY	# Of Modulars/ Portables	2024 PROVINCIAL % UTILIZ.	Provincial Utilization Difference (2023 to 2024)
<b>AREA 1</b>							
ARBOUR LAKE SCHOOL	824	92%	856	892	8	96%	4%
BELVEDERE PARKWAY SCHOOL	480	88%	523	543	0	96%	8%
BOWCROFT SCHOOL	359	76%	371	473	0	78%	3%
BOWNESS HIGH SCHOOL	1544	100%	1577	1672	0	94%	-6%
BRENTWOOD SCHOOL	729	94%	772	778	0	99%	6%
CAPTAIN JOHN PALLISER SCHOOL	597	94%	616	635	0	97%	3%
CHRISTINE MEIKLE SCHOOL	367	78%	369	466	0	79%	1%
CITADEL PARK SCHOOL	494	103%	506	481	8	105%	2%
DR. E. W. COFFIN SCHOOL	165	76%	211	218	1	97%	21%
EDGEMONT SCHOOL	636	96%	626	666	14	94%	-2%
ERIC HARVIE SCHOOL	329	55%	457	602	6	76%	21%
F. E. OSBORNE SCHOOL	722	100%	736	719	0	102%	2%
H. D. CARTWRIGHT SCHOOL	565	95%	542	593	2	91%	-4%
HAWKWOOD SCHOOL	706	108%	697	653	0	107%	-1%
MARION CARSON SCHOOL	501	96%	485	521	2	93%	-3%
RANCLANDS SCHOOL	399	80%	433	496	8	87%	7%
ROBERT THIRSK HIGH SCHOOL	1704	114%	1689	1497	0	113%	-1%
ROYAL OAK SCHOOL	563	103%	591	545	10	108%	5%
SCENIC ACRES SCHOOL	176	96%	193	183	7	106%	9%
SILVER SPRINGS SCHOOL	256	90%	272	286	1	95%	6%
SIMON FRASER SCHOOL	714	94%	706	760	6	93%	-1%
SIR WINSTON CHURCHILL HIGH SCHOOL	2495	124%	2387	2014	6	119%	-5%
TERRACE ROAD SCHOOL	189	61%	224	308	0	73%	12%
THE HAMPTONS SCHOOL	181	75%	179	240	4	75%	-1%
THOMAS B. RILEY SCHOOL	594	87%	536	698	0	77%	-10%
TOM BAINES SCHOOL	860	112%	862	776	1	111%	-1%
TUSCANY SCHOOL	539	81%	593	634	14	94%	12%
TWELVE MILE COULEE SCHOOL	857	96%	729	893	16	82%	-14%
WEST DALHOUSIE SCHOOL	324	100%	338	325	6	104%	5%
WILLIAM D. PRATT SCHOOL	938	99%	1000	894	8	112%	13%
<b>AREA 1 - TOTAL</b>	<b>19,803</b>	<b>97%</b>	<b>20,073</b>	<b>20,461</b>	<b>128</b>	<b>98%</b>	<b>1%</b>

# School Capacity and Utilization 2024 - 2025

Attachment IX

- i. The provincial utilization rate of each school building includes lease exemptions as of September 1 of the current year
- ii. Weighted Enrolment = (Kindergarten minus Kindergarten Special Education Severe) divided by 2) + (Kindergarten Special Education Severe multiplied by 1.5) + (GR 1-12 enrolment minus GR1-12 Special Education Severe) + (GR1-12 Special Education Severe multiplied by 3)
- iii. Utilization Rate = Weighted Enrolment divided by Provincial Capacity
- iv. \*Capacity values are given as calculated under the Instructional Area Method, currently prescribed by the Province of Alberta

SCHOOL	2023 WEIGHTED ENROLMENT	2023 PROVINCIAL % UTILIZ.	2024 WEIGHTED ENROLMENT	2024* PROVINCIAL CAPACITY	# Of Modulars/ Portables	2024 PROVINCIAL % UTILIZ.	Provincial Utilization Difference (2023 to 2024)
<b>AREA 2</b>							
ALEX MUNRO SCHOOL	297	66%	292	451	0	65%	-1%
BALMORAL SCHOOL	579	108%	587	538	0	109%	2%
BANFF TRAIL SCHOOL	342	82%	368	418	0	88%	6%
BEDDINGTON HEIGHTS SCHOOL	443	90%	431	493	8	87%	-3%
BRANTON SCHOOL	647	85%	724	819	6	88%	3%
BUCHANAN SCHOOL	215	89%	236	243	0	97%	8%
BUFFALO RUBBING STONE SCHOOL	648	108%	637	601	6	106%	-2%
CAMBRIAN HEIGHTS SCHOOL	414	85%	423	487	0	87%	2%
CAPITOL HILL SCHOOL	355	98%	348	362	0	96%	-2%
CAPTAIN NICHOLA GODDARD SCHOOL	988	110%	1025	897	16	114%	4%
CATHERINE NICHOLS GUNN SCHOOL	312	68%	446	458	0	97%	29%
CHILDREN'S VILLAGE SCHOOL	215	55%	222	393	0	57%	2%
COLLINGWOOD SCHOOL	456	81%	481	562	0	86%	4%
COLONEL IRVINE SCHOOL	848	108%	854	784	0	109%	1%
COLONEL SANDERS SCHOOL	373	103%	411	363	0	113%	10%
DALHOUSIE SCHOOL	449	95%	466	477	0	98%	3%
DR. J. K. MULLOY SCHOOL	472	95%	496	496	0	100%	5%
GEORGES P. VANIER SCHOOL	589	90%	618	635	0	97%	8%
HIGHWOOD SCHOOL	314	92%	325	341	0	95%	3%
HUNTINGTON HILLS SCHOOL	248	72%	249	346	0	72%	1%
JAMES FOWLER HIGH SCHOOL	1682	109%	1734	1803	0	96%	-13%
JOHN G. DIEFENBAKER HIGH SCHOOL	1506	107%	1416	1405	4	101%	-6%
KENNETH D. TAYLOR SCHOOL	654	111%	666	588	12	113%	2%
KING GEORGE SCHOOL	608	100%	627	618	0	102%	1%
NORTH HAVEN SCHOOL	246	60%	312	411	0	76%	16%
PANORAMA HILLS SCHOOL	571	96%	576	597	10	97%	1%
SENATOR PATRICK BURNS SCHOOL	807	93%	816	869	0	94%	1%
SIR JOHN A. MACDONALD SCHOOL	878	107%	796	867	4	92%	-15%
SIR JOHN FRANKLIN SCHOOL	457	81%	429	618	0	69%	-11%
THORNCLIFFE SCHOOL	254	110%	257	249	0	103%	-7%
VARSITY ACRES SCHOOL	556	90%	569	620	3	92%	2%
W. O. MITCHELL SCHOOL	324	76%	313	429	8	73%	-3%
WILLIAM ABERHART HIGH SCHOOL	1435	86%	1449	1679	4	86%	1%
<b>AREA 2 - TOTAL</b>	<b>19,177</b>	<b>94%</b>	<b>19,594</b>	<b>20,917</b>	<b>81</b>	<b>94%</b>	<b>0%</b>

# School Capacity and Utilization 2024 - 2025

Attachment IX

- i. The provincial utilization rate of each school building includes lease exemptions as of September 1 of the current year
- ii. Weighted Enrolment = (Kindergarten minus Kindergarten Special Education Severe) divided by 2) + (Kindergarten Special Education Severe multiplied by 1.5) + (GR 1-12 enrolment minus GR1-12 Special Education Severe) + (GR1-12 Special Education Severe multiplied by 3)
- iii. Utilization Rate = Weighted Enrolment divided by Provincial Capacity
- iv. \*Capacity values are given as calculated under the Instructional Area Method, currently prescribed by the Province of Alberta

SCHOOL	2023 WEIGHTED ENROLMENT	2023 PROVINCIAL % UTILIZ.	2024 WEIGHTED ENROLMENT	2024* PROVINCIAL CAPACITY	# Of Modulars/ Portables	2024 PROVINCIAL % UTILIZ.	Provincial Utilization Difference (2023 to 2024)
<b>AREA 3</b>							
ABBEYDALE SCHOOL	321	80%	357	396	6	90%	10%
BELFAST SCHOOL	207	80%	207	286	1	72%	-8%
CAPPY SMART SCHOOL	264	71%	310	373	4	83%	13%
COLONEL MACLEOD SCHOOL	674	100%	705	676	4	104%	5%
COVENTRY HILLS SCHOOL	634	99%	626	638	13	98%	-1%
CRESCENT HEIGHTS HIGH SCHOOL	1924	90%	1813	2143	0	85%	-5%
DR. GLADYS MCKELVIE EGBERT SCHOOL	523	98%	422	534	4	79%	-19%
ERIN WOODS SCHOOL	338	70%	423	482	8	88%	18%
ERNEST MORROW SCHOOL	752	81%	759	929	0	82%	1%
FOREST LAWN HIGH SCHOOL	1657	92%	1667	1830	0	91%	-1%
G. W. SKENE SCHOOL	194	68%	183	284	0	64%	-4%
HIDDEN VALLEY SCHOOL	409	78%	543	523	10	104%	26%
IAN BAZALGETTE SCHOOL	742	104%	650	712	3	91%	-13%
JACK JAMES HIGH SCHOOL	682	82%	662	829	0	80%	-2%
JAMES SHORT MEMORIAL SCHOOL	152	32%	230	471	1	49%	17%
KEELER SCHOOL	539	89%	571	609	0	94%	5%
MOUNT VIEW SCHOOL	216	101%	201	215	0	93%	-7%
NORTH TRAIL HIGH SCHOOL	1411	75%	2244	1891	0	119%	44%
NORTHERN LIGHTS SCHOOL	573	102%	631	584	0	108%	6%
NOSE CREEK SCHOOL	939	103%	1011	914	16	111%	8%
NIITSITAPI LEARNING CENTRE	169	50%	170	336	0	50%	0%
PATRICK AIRLIE SCHOOL	220	87%	289	252	0	115%	27%
PENBROOKE MEADOWS SCHOOL	229	61%	245	377	0	65%	4%
RADISSON PARK SCHOOL	352	91%	407	388	2	105%	14%
RIVERSIDE SCHOOL	654	102%	664	640	0	104%	2%
ROLAND MICHENER SCHOOL	194	74%	238	263	0	91%	17%
ROSEDALE SCHOOL	283	109%	273	259	2	105%	-4%
ROSEMONT SCHOOL	247	105%	241	235	0	103%	-3%
STANLEY JONES SCHOOL	526	95%	518	554	0	93%	-2%
SUNNYSIDE SCHOOL	170	74%	194	228	0	85%	11%
VALLEY CREEK SCHOOL	829	95%	855	870	12	98%	3%
VALLEY VIEW SCHOOL	482	79%	595	612	0	97%	19%
VISTA HEIGHTS SCHOOL	178	80%	168	224	0	75%	-5%
WEST DOVER SCHOOL	225	50%	282	447	0	63%	13%
<b>AREA 3 - TOTAL</b>	<b>17,903</b>	<b>86%</b>	<b>19,350</b>	<b>21,004</b>	<b>86</b>	<b>92%</b>	<b>7%</b>

# School Capacity and Utilization 2024 - 2025

Attachment IX

- i. The provincial utilization rate of each school building includes lease exemptions as of September 1 of the current year
- ii. Weighted Enrolment = (Kindergarten minus Kindergarten Special Education Severe) divided by 2) + (Kindergarten Special Education Severe multiplied by 1.5) + (GR 1-12 enrolment minus GR1-12 Special Education Severe) + (GR1-12 Special Education Severe multiplied by 3)
- iii. Utilization Rate = Weighted Enrolment divided by Provincial Capacity
- iv. \*Capacity values are given as calculated under the Instructional Area Method, currently prescribed by the Province of Alberta

SCHOOL	2023 WEIGHTED ENROLMENT	2023 PROVINCIAL % UTILIZ.	2024 WEIGHTED ENROLMENT	2024* PROVINCIAL CAPACITY	# Of Modulars/ Portables	2024 PROVINCIAL % UTILIZ.	Provincial Utilization Difference (2023 to 2024)
<b>AREA 4</b>							
ANNIE FOOTE SCHOOL	469	94%	484	499	9	97%	3%
ANNIE GALE SCHOOL	619	97%	641	640	8	100%	4%
BOB EDWARDS SCHOOL	528	87%	589	610	0	97%	10%
CECIL SWANSON SCHOOL	400	88%	391	453	6	86%	-2%
CHIEF JUSTICE MILVAIN SCHOOL	531	101%	556	525	10	106%	5%
CHRIS AKKERMAN SCHOOL	578	107%	612	541	6	113%	6%
CLARENCE SANSOM SCHOOL	757	96%	838	788	8	106%	10%
COLONEL J. FRED SCOTT SCHOOL	514	108%	466	475	8	98%	-10%
CROSSING PARK SCHOOL	1137	118%	1097	963	15	114%	-4%
DOUGLAS HARKNESS SCHOOL	330	99%	335	335	2	100%	1%
DR. GORDON HIGGINS SCHOOL	744	107%	762	680	8	112%	5%
FALCONRIDGE SCHOOL	544	94%	565	576	12	98%	4%
GRANT MACEWAN SCHOOL	659	115%	628	571	12	110%	-5%
GUY WEADICK SCHOOL	409	95%	411	430	6	96%	1%
HUGH A. BENNETT SCHOOL	619	107%	662	576	0	115%	7%
LESTER B. PEARSON HIGH SCHOOL	1757	112%	1748	1567	0	112%	-1%
LOUISE DEAN SCHOOL	41	19%	41	212	0	19%	0%
MANMEET SINGH BHULLAR SCHOOL	524	98%	526	533	6	99%	0%
MARLBOROUGH SCHOOL	290	85%	308	341	0	90%	5%
MAYLAND HEIGHTS SCHOOL	431	82%	436	514	0	85%	3%
MONTEREY PARK SCHOOL	564	86%	601	657	17	92%	6%
NELSON MANDELA HIGH SCHOOL	1956	120%	2033	1626	0	125%	5%
O. S. GEIGER SCHOOL	509	100%	562	511	9	110%	11%
PETER LOUGHEED SCHOOL	1002	105%	1022	957	8	107%	2%
PINERIDGE SCHOOL	404	88%	482	457	6	105%	17%
PRAIRIE SKY SCHOOL	924	114%	923	916	0	101%	-13%
RUNDLE SCHOOL	481	90%	509	536	10	95%	5%
SADDLE RIDGE SCHOOL	620	106%	628	587	12	107%	1%
SIR WILFRID LAURIER SCHOOL	509	96%	493	528	0	93%	-3%
TARADALE SCHOOL	671	104%	634	643	10	99%	-6%
TED HARRISON SCHOOL	966	109%	978	888	16	110%	1%
TERRY FOX SCHOOL	697	91%	640	705	0	91%	0%
<b>AREA 4 - TOTAL</b>	<b>21,180</b>	<b>102%</b>	<b>21,597</b>	<b>20,840</b>	<b>204</b>	<b>104%</b>	<b>2%</b>



# School Capacity and Utilization 2024 - 2025

Attachment IX

- i. The provincial utilization rate of each school building includes lease exemptions as of September 1 of the current year
- ii. Weighted Enrolment = (Kindergarten minus Kindergarten Special Education Severe) divided by 2) + (Kindergarten Special Education Severe multiplied by 1.5) + (GR 1-12 enrolment minus GR1-12 Special Education Severe) + (GR1-12 Special Education Severe multiplied by 3)
- iii. Utilization Rate = Weighted Enrolment divided by Provincial Capacity
- iv. \*Capacity values are given as calculated under the Instructional Area Method, currently prescribed by the Province of Alberta

SCHOOL	2023 WEIGHTED ENROLMENT	2023 PROVINCIAL % UTILIZ.	2024 WEIGHTED ENROLMENT	2024* PROVINCIAL CAPACITY	# Of Modulars/ Portables	2024 PROVINCIAL % UTILIZ.	Provincial Utilization Difference (2023 to 2024)
<b>AREA 5</b>							
ACADIA SCHOOL	467	95%	449	493	0	91%	-4%
AUBURN BAY SCHOOL	604	100%	601	604	6	100%	-1%
BAYSIDE SCHOOL	532	98%	604	567	6	107%	9%
BRIDLEWOOD SCHOOL	443	76%	506	584	12	87%	11%
CENTENNIAL HIGH SCHOOL	1779	122%	1988	1598	0	124%	3%
CHAPARRAL SCHOOL	504	104%	513	484	8	106%	2%
COPPERFIELD SCHOOL	569	98%	608	579	12	105%	7%
CRANSTON SCHOOL	626	105%	570	596	12	96%	-9%
DEER RUN SCHOOL	400	92%	379	434	6	87%	-5%
DOUGLASDALE SCHOOL	387	87%	378	447	7	85%	-2%
DR. GEORGE STANLEY SCHOOL	710	78%	918	913	8	101%	23%
DR. MARTHA COHEN SCHOOL	898	95%	928	947	0	98%	3%
FAIRVIEW SCHOOL	912	92%	923	994	0	93%	1%
FISH CREEK SCHOOL	612	95%	589	647	0	91%	-4%
HAULTAIN MEMORIAL SCHOOL	200	68%	191	293	0	65%	-3%
JOANE CARDINAL-SCHUBERT HIGH SCHOOL	2023	125%	2060	1615	0	128%	2%
LAKE BONAVIDA SCHOOL	364	92%	356	397	2	90%	-2%
LAKESHORE SCHOOL	1000	103%	1031	971	0	106%	3%
LE ROI DANIELS SCHOOL	528	94%	527	563	2	94%	0%
LORD BEAVERBROOK HIGH SCHOOL	2034	96%	2293	2256	1	102%	6%
MAHOGANY SCHOOL	677	123%	768	591	0	130%	7%
MAPLE RIDGE SCHOOL	365	80%	363	426	0	85%	5%
MCKENZIE HIGHLANDS SCHOOL	913	96%	831	947	0	88%	-9%
MCKENZIE LAKE SCHOOL	572	91%	621	655	2	95%	4%
MCKENZIE TOWNE SCHOOL	591	87%	580	679	8	85%	-2%
MIDNAPORE SCHOOL	407	75%	428	543	12	79%	4%
MIDSUN SCHOOL	767	79%	764	880	1	87%	8%
MOUNTAIN PARK SCHOOL	651	80%	632	813	16	78%	-2%
NEW BRIGHTON SCHOOL	593	102%	583	579	12	101%	-2%
PRINCE OF WALES SCHOOL	290	76%	321	381	4	84%	8%
R. T. ALDERMAN SCHOOL	734	89%	735	826	1	89%	0%
SAMUEL W. SHAW SCHOOL	868	86%	912	1065	16	86%	-1%
SIBYLLA KIDDLE SCHOOL	550	96%	605	573	0	106%	10%
SOMERSET SCHOOL	236	63%	251	374	4	67%	4%
WILLOW PARK SCHOOL	605	90%	661	670	0	99%	8%
WILMA HANSEN SCHOOL	471	76%	461	623	8	74%	-2%
<b>AREA 5 - TOTAL</b>	<b>24,877</b>	<b>95%</b>	<b>25,924</b>	<b>26,607</b>	<b>166</b>	<b>97%</b>	<b>3%</b>

# School Capacity and Utilization 2024 - 2025

Attachment IX

- i. The provincial utilization rate of each school building includes lease exemptions as of September 1 of the current year
- ii.  $\text{Weighted Enrolment} = (\text{Kindergarten minus Kindergarten Special Education Severe}) \div 2 + (\text{Kindergarten Special Education Severe multiplied by } 1.5) + (\text{GR } 1\text{-}12 \text{ enrolment minus GR } 1\text{-}12 \text{ Special Education Severe}) + (\text{GR } 1\text{-}12 \text{ Special Education Severe multiplied by } 3)$
- iii.  $\text{Utilization Rate} = \text{Weighted Enrolment} \div \text{Provincial Capacity}$
- iv. \*Capacity values are given as calculated under the Instructional Area Method, currently prescribed by the Province of Alberta

SCHOOL	2023 WEIGHTED ENROLMENT	2023 PROVINCIAL % UTILIZ.	2024 WEIGHTED ENROLMENT	2024* PROVINCIAL CAPACITY	# Of Modulars/ Portables	2024 PROVINCIAL % UTILIZ.	Provincial Utilization Difference (2023 to 2024)
<b>AREA 6</b>							
A. E. CROSS SCHOOL	696	79%	689	886	0	78%	-1%
ALTADORE SCHOOL	386	97%	367	397	0	92%	-5%
ALTERNATIVE HIGH SCHOOL	284	113%	275	271	0	102%	-12%
ANDREW SIBBALD SCHOOL	354	79%	313	447	0	70%	-9%
BANTING AND BEST SCHOOL	163	65%	195	250	2	78%	13%
BRAESIDE SCHOOL	222	40%	232	552	0	42%	2%
CANYON MEADOWS SCHOOL	417	76%	447	546	0	82%	6%
CEDARBRAE SCHOOL	204	74%	221	276	0	80%	6%
CENTRAL MEMORIAL HIGH SCHOOL	1865	97%	1777	1923	0	92%	-5%
CHINOOK PARK SCHOOL	480	70%	520	683	0	76%	6%
DAVID THOMPSON SCHOOL	623	88%	659	706	0	93%	5%
DR. E. P. SCARLETT HIGH SCHOOL	1758	114%	1873	1543	0	121%	8%
DR. FRED A MILLER SCHOOL	493	84%	488	587	0	83%	-1%
EMILY FOLLENSBEE SCHOOL	273	102%	258	269	0	96%	-6%
ETHEL M. JOHNSON SCHOOL	326	62%	322	527	0	61%	-1%
EUGENE COSTE SCHOOL	343	69%	359	497	0	72%	3%
EVERGREEN SCHOOL	457	86%	526	533	12	99%	13%
GLENBROOK SCHOOL	308	87%	302	353	0	86%	-2%
GLENMEADOWS SCHOOL	352	68%	376	516	11	73%	5%
HAROLD PANABAKER SCHOOL	465	79%	420	592	4	71%	-8%
HAYSBORO SCHOOL	205	91%	216	266	0	81%	-10%
HENRY WISE WOOD HIGH SCHOOL	2024	100%	2119	2025	0	105%	5%
JANET JOHNSTONE SCHOOL	471	93%	484	507	8	95%	3%
JOHN WARE SCHOOL	530	88%	455	603	1	76%	-12%
LOUIS RIEL SCHOOL	857	99%	920	867	4	106%	7%
MARSHALL SPRINGS SCHOOL	709	81%	760	881	0	86%	6%
NELLIE MCCLUNG SCHOOL	367	72%	365	510	0	72%	0%
NICKLE SCHOOL	224	29%	401	749	3	54%	24%
RIVERBEND SCHOOL	300	60%	312	502	6	62%	2%
ROBERT WARREN SCHOOL	305	65%	321	472	3	68%	3%
RON SOUTHERN SCHOOL	515	90%	562	571	6	98%	8%
SAM LIVINGSTON SCHOOL	389	67%	371	576	7	64%	-3%
SHERWOOD SCHOOL	433	65%	435	669	0	65%	0%
SUNDANCE SCHOOL	495	99%	536	500	8	107%	8%
WOODBINE SCHOOL	392	87%	411	453	7	91%	4%
WOODLANDS SCHOOL	280	70%	256	402	4	64%	-6%
WOODMAN SCHOOL	513	61%	581	846	0	69%	8%
<b>AREA 6 - TOTAL</b>	<b>19,471</b>	<b>82%</b>	<b>20,120</b>	<b>23,753</b>	<b>86</b>	<b>85%</b>	<b>3%</b>

# School Capacity and Utilization 2024 - 2025

Attachment IX

- i. The provincial utilization rate of each school building includes lease exemptions as of September 1 of the current year
- ii.  $\text{Weighted Enrolment} = (\text{Kindergarten minus Kindergarten Special Education Severe}) \div 2 + (\text{Kindergarten Special Education Severe multiplied by } 1.5) + (\text{GR } 1\text{-}12 \text{ enrolment minus GR } 1\text{-}12 \text{ Special Education Severe}) + (\text{GR } 1\text{-}12 \text{ Special Education Severe multiplied by } 3)$
- iii.  $\text{Utilization Rate} = \text{Weighted Enrolment} \div \text{Provincial Capacity}$
- iv. \*Capacity values are given as calculated under the Instructional Area Method, currently prescribed by the Province of Alberta

SCHOOL	2023 WEIGHTED ENROLMENT	2023 PROVINCIAL % UTILIZ.	2024 WEIGHTED ENROLMENT	2024* PROVINCIAL CAPACITY	# Of Modulars/ Portables	2024 PROVINCIAL % UTILIZ.	Provincial Utilization Difference (2023 to 2024)
<b>AREA 7</b>							
ALEXANDER FERGUSON SCHOOL	219	87%	227	245	0	93%	5%
ALL BOYS PROGRAM	81	32%	59	257	0	23%	-9%
BATTALION PARK SCHOOL	575	84%	555	677	13	82%	-2%
BISHOP PINKHAM SCHOOL	611	80%	636	769	0	83%	3%
BRIAR HILL SCHOOL	226	81%	230	278	0	83%	2%
COLONEL WALKER SCHOOL (Includes Piitoayis)	354	59%	430	668	1	64%	5%
CONNAUGHT SCHOOL	446	112%	458	399	0	115%	3%
DR. OAKLEY SCHOOL	186	43%	210	430	0	49%	6%
DR. ROBERTA BONDAR SCHOOL	586	105%	598	560	0	107%	2%
EARL GREY SCHOOL	336	96%	329	349	0	94%	-2%
ELBOW PARK SCHOOL	211	76%	229	276	0	83%	7%
ELBOYA SCHOOL	721	94%	739	767	6	96%	2%
ERNEST MANNING HIGH SCHOOL	1750	104%	1948	1678	0	116%	12%
GLAMORGAN SCHOOL	732	108%	736	677	2	109%	1%
GLENDALE SCHOOL	260	80%	246	325	0	76%	-5%
GRIFFITH WOODS SCHOOL	966	111%	977	869	0	112%	1%
HILLHURST SCHOOL	290	81%	312	357	0	87%	6%
JENNIE ELLIOTT SCHOOL	598	87%	613	685	0	89%	2%
KILLARNEY SCHOOL	337	90%	333	373	0	89%	-1%
MOUNT ROYAL SCHOOL	443	97%	452	453	0	100%	3%
OLYMPIC HEIGHTS SCHOOL	482	74%	519	653	14	79%	6%
QUEEN ELIZABETH SCHOOL	393	101%	425	387	2	110%	8%
QUEEN ELIZABETH HIGH SCHOOL	1199	86%	1192	1379	0	86%	0%
RAMSAY SCHOOL	304	87%	310	349	0	89%	2%
RICHMOND SCHOOL	333	120%	371	278	0	134%	14%
RIDEAU PARK SCHOOL	468	99%	469	473	0	99%	0%
SIMONS VALLEY SCHOOL	711	116%	716	614	12	117%	1%
SUNALTA SCHOOL	340	83%	371	410	0	90%	8%
UNIVERSITY SCHOOL	363	68%	373	537	0	69%	2%
VINCENT MASSEY SCHOOL	818	87%	919	922	0	100%	13%
WEST RIDGE SCHOOL	865	94%	884	916	8	97%	2%
WEST SPRINGS SCHOOL	593	100%	597	596	12	100%	1%
WESTERN CANADA HIGH SCHOOL	2274	110%	2351	2128	0	111%	1%
WESTGATE SCHOOL	567	78%	566	727	0	78%	0%
WILDWOOD SCHOOL	505	82%	612	618	0	99%	17%
WILLIAM REID SCHOOL	280	94%	274	298	4	92%	-2%
<b>AREA 7 - TOTAL</b>	<b>20,418</b>	<b>92%</b>	<b>21,259</b>	<b>22,377</b>	<b>74</b>	<b>95%</b>	<b>3%</b>
<b>GRAND TOTALS</b>	<b>142,827</b>	<b>92%</b>	<b>147,915</b>	<b>155,959</b>	<b>825</b>	<b>95%</b>	<b>3%</b>

## LEASED SPACE IN OPERATING CBE SCHOOLS 2024-2025

(includes both full-time and part-time leases)

CBE AREA	SCHOOL NAME	LICENSEE NAME	AREA (SQ.M)
1	Belvedere Parkway	Kids Love Bowness	226.7
1	Bowcroft	Children Come First Association	435.4
1	Captain John Palliser	Captain John Palliser Out-of-School Care	346.0
1	Dr. E.W. Coffin	Millennium Kidz N Kare	224.4
1	Eric Harvie	Coded Minds Canada	231.5
1	Hawkwood	Children Come First Association	337.5
1	Marion Carson	Pre-Kindergarten Educational Services	88.5
1	Marion Carson	Society of Briar Hill Children's Programs	357.5
1	Silver Springs	Topp Kids Foundation <b>**NEW</b>	335.5
1	Terrace Road	Summit Kids	296.3
1	Terrace Road	University Heights Nursery School Association	73.9
1	Tuscany	Coded Minds Canada	434.7
1	West Dalhousie	Dalhousie Community Association	348.5
2	Alex Munro	Active Minds Childcare. <b>**NEW</b>	178.9
2	Banff Trail	Children Come First Association	346.1
2	Buchanan	S'Cool Kids Club	143.7
2	Buffalo Rubbing Stone	Mighty Learner Corp	343.7
2	Cambrian Heights	Children Come First Association	340.2
2	Capitol Hill	Adventurers School Age Care	354.0
2	Catherine Nichols Gunn	Children Come First Association	358.6
2	Collingwood	Adventurers School Age Care	350.1
2	Colonel Sanders (TLC)	Northmount Student Care	253.9
2	Dalhousie	Dalhousie Community Association	491.4
2	Highwood	Children Come First Association	435.5
2	Huntington Hills	Summit Kids	279.1
2	Kenneth D. Taylor	Children Come First Association	341.9
2	King George	Pleasant Heights After School Care Association	333.1
2	North Haven	Children Come First Association	403.2
2	Panorama Hills	Pleasant Heights After School Care Association	337.0
2	Thorncliffe	Adventures Child Care <b>**NEW</b>	261.6
2	Varsity Acres	Seeds of S.P.I.C.E Early Learning Centre	405.3
2	W.O. Mitchell	Summit Kids	441.5
3	Belfast	Belfast Student Care	269.8
3	Coventry Hills	Topp Kids Foundation	439.2
3	Hidden Valley	S'Cool Kids Club <b>**NEW</b>	339.2
3	Jack James High	Kindred Connections Society	678.0
3	Mount View	Creative World	172.5
3	Niitsitapi Learning Centre	Alberta Health Services (Elbow River Healing Lodge)	17.8
3	Northern Lights School	Little Steps Before and After School Care	429.2
3	Rosemont	Rosemont Community Childcare	223.5
3	Stanley Jones	Adventures Child Care	363.8
3	Sunnyside	Pre-Kindergarten Educational Services	104.2
3	Sunnyside	Sunnyside Out-of-School Care	109.6
4	Marlborough	Kidzclub Calgary Ltd.	178.7
4	Mayland Heights	Society of Briar Hill Children's Programs	364.5
4	Taradale	Taradale Student Care	201.0
5	Acadia	Adventures Child Care	359.8
5	Auburn Bay	Topp Kids Foundation	457.8
5	Bayside	Topp Kids Foundation	429.3

## LEASED SPACE IN OPERATING CBE SCHOOLS 2024-2025

(includes both full-time and part-time leases)

CBE AREA	SCHOOL NAME	LICENSEE NAME	AREA (SQ.M)
5	Bridlewood	Topp Kids Foundation <b>**NEW</b>	337.8
5	Chaparral	Juvenescence Child Development Centre	436.4
5	Copperfield	Topp Kids Foundation	343.7
5	Cranston	Juvenescence Child Development Centre	330.0
5	Douglasdale	A Step Ahead - Child Development Services	154.2
5	Fish Creek	1st Class - After Class	339.1
5	Lake Bonavista	Rec House	226.2
5	Mahogany	1st Class Innovative Child Care Solutions	434.4
5	Maple Ridge	Topp Kids Foundation	319.4
5	McKenzie Lake	Topp Kids Foundation	436.6
5	McKenzie Towne	Rec House	340.4
5	Midnapore	Mid-Sun Child Care	311.9
5	New Brighton	1st Class - After Class	343.7
5	Prince Of Wales	Topp Kids Foundation	448.1
5	Sibylla Kiddle School	1st Class - After Class	429.2
5	Somerset	1st Class Innovative Child Care Solutions	299.7
6	Altadore	Seeds of S.P.I.C.E Early Learning Centre	331.1
6	Andrew Sibbald	Rec House	424.9
6	Banting and Best	Coded Minds Canada	265.4
6	Cedarbrae	Adventures Child Care <b>**NEW</b>	372.0
6	Chinook Park	Adventurers School Age Care	445.7
6	Dr. Freda Miller School	Seeds of S.P.I.C.E Early Learning Centre	371.0
6	Ethel M. Johnson	Adventures Child Care	268.8
6	Eugene Coste	Calgary Child's Play	673.5
6	Evergreen	Topp Kids Foundation	412.8
6	Glenbrook	Glenbrook Preschool Society	72.7
6	Glenbrook	Maple Roots	180.9
6	Glenmeadows	Calgary Child's Play	332.1
6	Haysboro	Maple Roots	261.0
6	Janet Johnstone	Creations Child Care	340.0
6	Nellie McClung	Summit Kids	324.3
6	Ron Southern	1st Class - After Class	452.3
6	Sam Livingston	Rec House	540.9
6	Sundance	Children Can Succeed	226.8
6	Woodbine	1st Class Innovative Child Care Solutions <b>**NEW</b>	334.8
7	Alexander Ferguson	Alexander Ferguson Elementary School Society	255.0
7	Battalion Park	Kidzinc School Care Society of Alberta	282.9
7	Briar Hill	Hounsfield Heights - Briar Hill Community Playschool	83.7
7	Briar Hill	Society of Briar Hill Children's Programs	363.1
7	Connaught	Churchill Park Family Care Society	222.1
7	Dr. Oakley	Trellis Society	80.7
7	Dr. Roberta Bondar	Summit Kids	341.2
7	Earl Grey	Little Steps Before and After School Care	342.6
7	Elbow Park	Calgary Child's Play	434.3
7	Glamorgan	Maple Roots	241.0
7	Glendale	Calgary Child's Play	262.4
7	Hillhurst	Society of Briar Hill Children's Programs	204.0
7	Jennie Elliott	Jennie Elliott Student Care	445.3
7	Killarney	Kidzinc School Care Society of Alberta	255.3

**LEASED SPACE IN OPERATING CBE SCHOOLS 2024-2025**

(includes both full-time and part-time leases)

<b>CBE AREA</b>	<b>SCHOOL NAME</b>	<b>LICENSEE NAME</b>	<b>AREA (SQ.M)</b>
7	Olympic Heights	Kidzinc School Care Society of Alberta	349.2
7	Queen Elizabeth	Adventurers School Age Care	264.7
7	Ramsay	Coded Minds Canada	228.5
7	Richmond	S'Cool Kids Club	233.7
7	Rideau Park	Summit Kids	81.3
7	Simons Valley	Coded Minds Canada	309.1
7	Sunalta	Scarboro Community Preschool	91.6
7	Sunalta	Sunalta Student Care	401.1
7	University	Summit Kids	469.2
7	West Springs	Maple Roots	332.5
7	Westgate	Calgary Child's Play	534.4
7	Wildwood	Kidzinc School Care Society of Alberta	275.3
7	William Reid	Seeds of S.P.I.C.E Early Learning Centre	322.2

AREA 1; 3,736.4  
 AREA 2: 6,398.8  
 AREA 3: 3,146.8  
 AREA 4: 744.2  
 AREA 5: 6,777.7  
 AREA 6: 6,631.0  
 AREA 7: 7706.4

**TOTAL SQUARE METERS LEASED: 35,141.3**

**LEASE OF SURPLUS SCHOOL FACILITIES 2024-2025**

<b>CBE AREA</b>	<b>SCHOOL NAME</b>	<b>LESSEE NAME</b>	<b>AREA (SQ. M)</b>
1	Belvedere Parkway Bungalow	Thornhill Child Care	373.20
1	Parkdale	Westmount Charter School	6,375.00
3	Greenview	Foundations for the Future Charter Academy	4,669.40
3	Riverside Bungalow	Wilderchild Futures Incorporated	926.44
4	Mountain View	Almadina Language Charter Academy	3,853.20
5	Alice M Curtis	Foundations for the Future Charter Academy	3,441.50
5	Andrew Davison	Foundations for the Future Charter Academy	4,309.00
6	Lakeview	Calgary Girls Charter Academy	3,594.00
6	Ogden	Almadina Language Charter Academy	4,887.80
6	Southwood	Foundations for the Future Charter Academy	4,192.00
7	Clem Gardner	Connect Charter School	7,107.00
7	Knob Hill	Calgary Arts Charter Academy	2,270.60
7	Rosscarrock	Calgary Arts Charter Academy	3,330.10
7	Sir William Van Horne	Westmount Charter School	9,670.00
7	Spruce Cliff	Calgary Quest Children's Society	2,387.70

AREA 1: 6,748.20  
 AREA 2: -  
 AREA 3: 5,595.84  
 AREA 4: 3,853.20  
 AREA 5: 7,750.50  
 AREA 6: 12,673.80  
 AREA 7: 24,765.40

**TOTAL SQUARE METRES LEASED: 61,386.94**