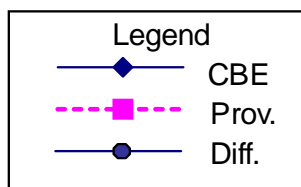
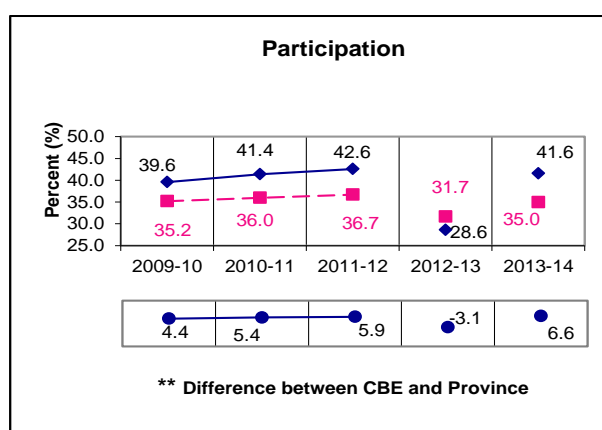
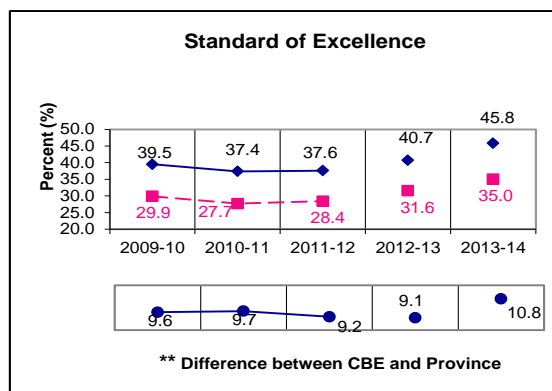
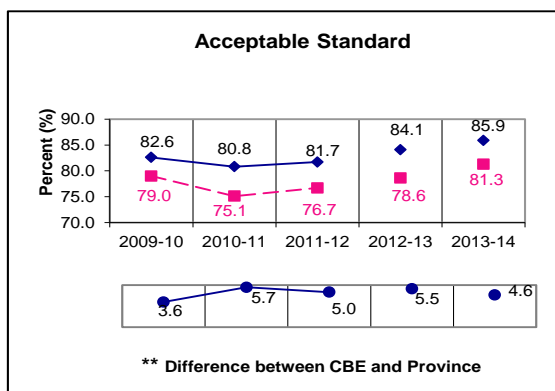


# Chemistry 30



\*\* A positive difference on the **Difference between CBE and Province** graph indicates the CBE result is higher than that of the province, whereas a negative difference indicates a lower CBE performance.

**NOTE:** It is important to note that participation in this diploma exam was substantially impacted by the flooding in June 2013. Extreme caution should be used when interpreting trends over time.