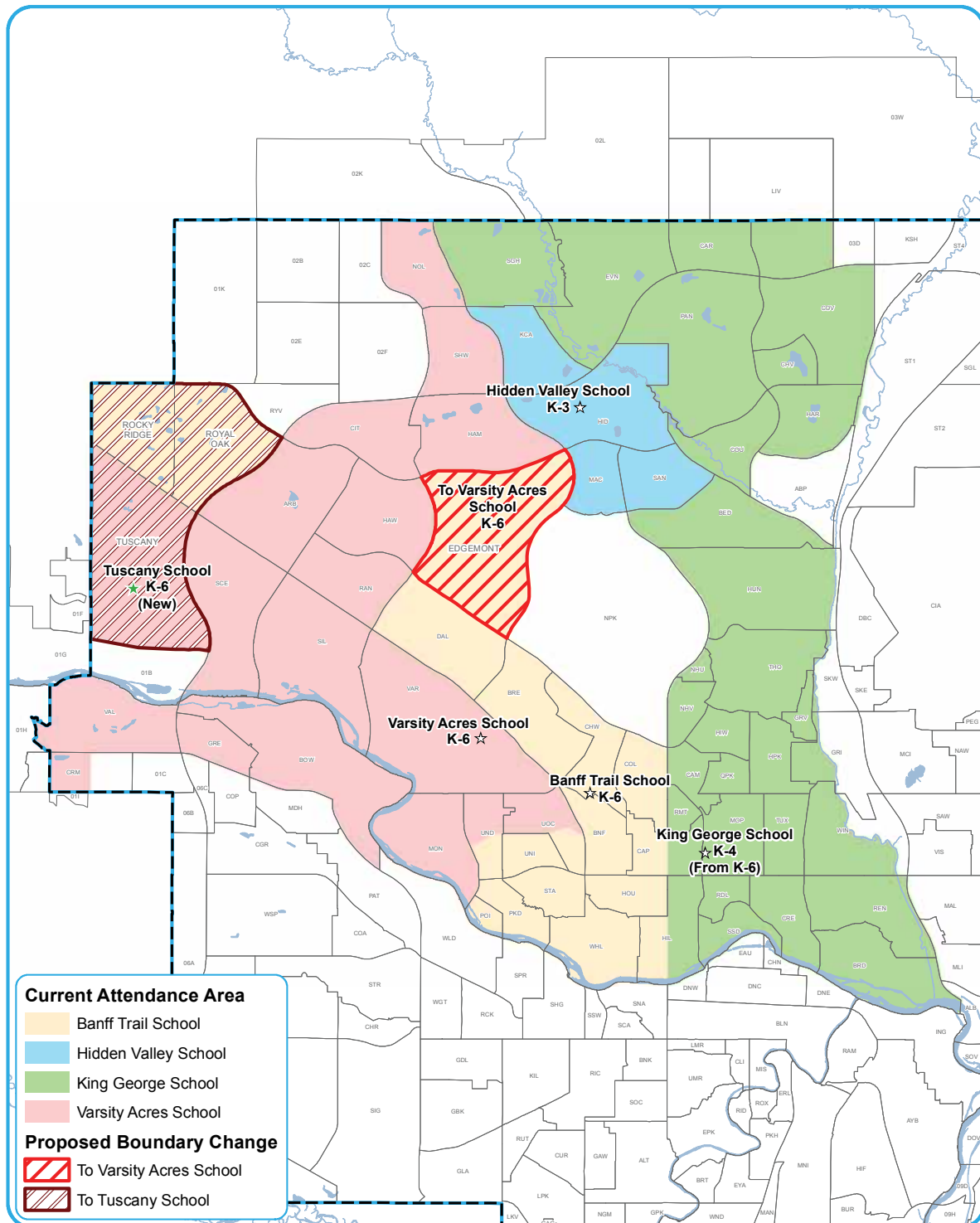




## Proposed Elementary Early French Immersion Program Boundaries



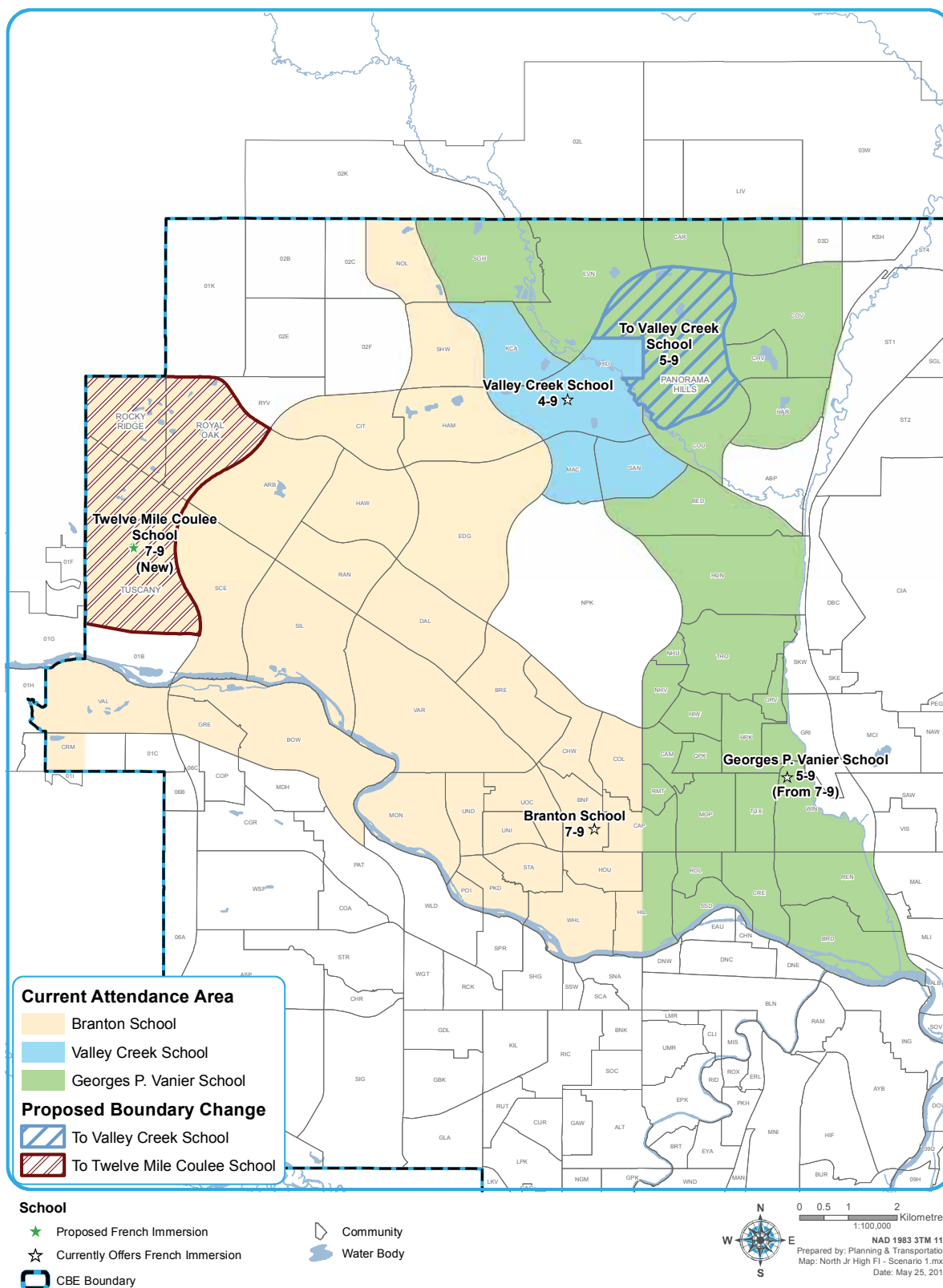
### School

- ★ Proposed French Immersion
- ☆ Currently Offers French Immersion
- CBSE Boundary

- Community
- Water Body

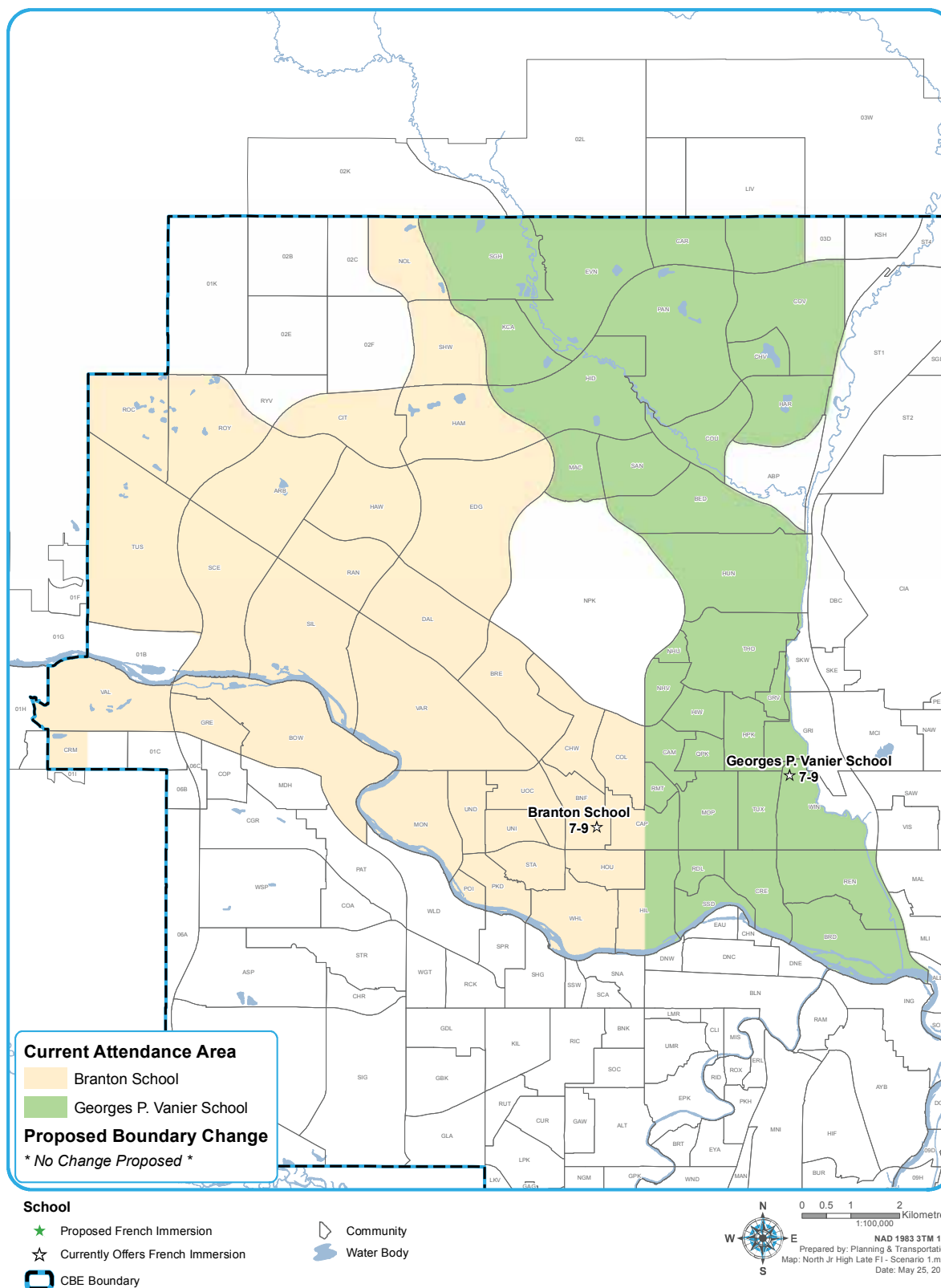


## Proposed Middle/Junior High Early French Immersion Program Boundaries





## Proposed Junior High Late French Immersion Program Boundaries





## Early and Late French Immersion Programs in Northwest and North Central Calgary

**Add two new locations, grade configuration change,  
small amount of boundary changes**

	School	Current	Scenario A
Elementary Schools	<b>Banff Trail School</b> Instructional Space: 450 2017 Enrolment: 454	K-6 Early French Immersion Program	<b>K-6 Early French Immersion Program</b> (Projected: 350-400) ■ Rocky Ridge/Royal Oak communities move to Tuscany School ■ Edgemont community moves to Varsity Acres School
	<b>Eric Harvie School</b> Instructional Space: 600 2017 Enrolment: 464	K-4 Regular Program	<b>K-5 Regular Program</b> (Projected: 500-575) ■ Grade 5 from the current catchment area added
	<b>Hidden Valley School</b> Instructional Space: 550 2017 Enrolment: 446 ■ Early: 242 ■ Regular Program: 204	K-3 Early French Immersion Program  K-3 Regular Program	<b>K-3 Early French Immersion Program</b> (Projected: 235-250) ■ No change  <b>K-3 Regular Program</b> (Projected: 190-205) ■ No change Total Projected: 425-455
	<b>King George School</b> Instructional Space: 650 2017 Enrolment: 607	K-6 Early French Immersion Program	<b>K-4 Early French Immersion Program</b> (Projected: 540-590) ■ Grades 5 and 6 move to G.P. Vanier School
	<b>Tuscany School</b> Instructional Space: 700 2017 Enrolment: 358	K-4 Regular Program	<b>K-5 Regular Program</b> (Projected: 300-330) ■ Grade 5 from the current catchment area added  <b>K-6 Early French Immersion Program</b> (Projected: 300-360) ■ For Rocky Ridge/Royal Oak, Tuscany communities Total Projected: 600-690
	<b>Varsity Acres School</b> Instructional Space: 625 2017 Enrolment: 563	K-6 Early French Immersion Program	<b>K-6 Early French Immersion Program</b> (Projected: 475-500) ■ Edgemont community added ■ Tuscany community moves to Tuscany School
Middle/Junior High Schools	<b>Branton School</b> Instructional Space: 835 2017 Enrolment: 718 ■ Early: 348 ■ Late: 370	7-9 Early French Immersion Program  7-9 Late French Immersion Program	<b>7-9 Early French Immersion Program</b> (Projected: 300-335) ■ Rocky Ridge/Royal Oak, Tuscany communities move to Twelve Mile Coulee School  <b>7-9 Late French Immersion Program</b> (Projected: 350-365) ■ No change Total Projected: 650-700
	<b>F.E. Osborne School</b> Instructional Space: 735 2017 Enrolment: 420	7-9 Regular Program	<b>7-9 Regular Program</b> (Projected: 400-460) ■ No change
	<b>Georges P. (G.P.) Vanier School</b> Instructional Space: 590 2017 Enrolment: 370 ■ Early: 120 ■ Late: 100 ■ Regular Program: 150	7-9 Early French Immersion Program  7-9 Late French Immersion Program  7-9 Regular Program	<b>5-9 Early French Immersion Program</b> (Projected: 285-375) ■ Grades 5 and 6 added from King George School ■ Panorama community moves to Valley Creek School  <b>7-9 Late French Immersion Program</b> (Projected: 110-115) ■ No change  <b>7-9 Regular Program</b> (Projected: 90-105) ■ No change Total Projected: 485-595
	<b>Twelve Mile Coulee School</b> Instructional Space: 885 2017 Enrolment: 840	5-9 Regular Program	<b>6-9 Regular Program</b> (Projected: 600-650) ■ Grade 5 at Tuscany and Eric Harvie schools  <b>7-9 Early French Immersion Program</b> (Projected: 125-150) ■ For Rocky Ridge/Royal Oak, Tuscany communities Total Projected: 725-800
	<b>Valley Creek School</b> Instructional Space: 840 2017 Enrolment: 724 ■ Early: 216 ■ Regular Program: 508	4-9 Early French Immersion Program  4-9 Regular Program	<b>4-9 Early French Immersion Program</b> (Projected: 315-345) ■ Grades 5-9 from Panorama community added  <b>4-9 Regular Program</b> (Projected: 335-375) ■ No change Total Projected: 650-720

Projected = Highest projected enrolment range for 2019-22