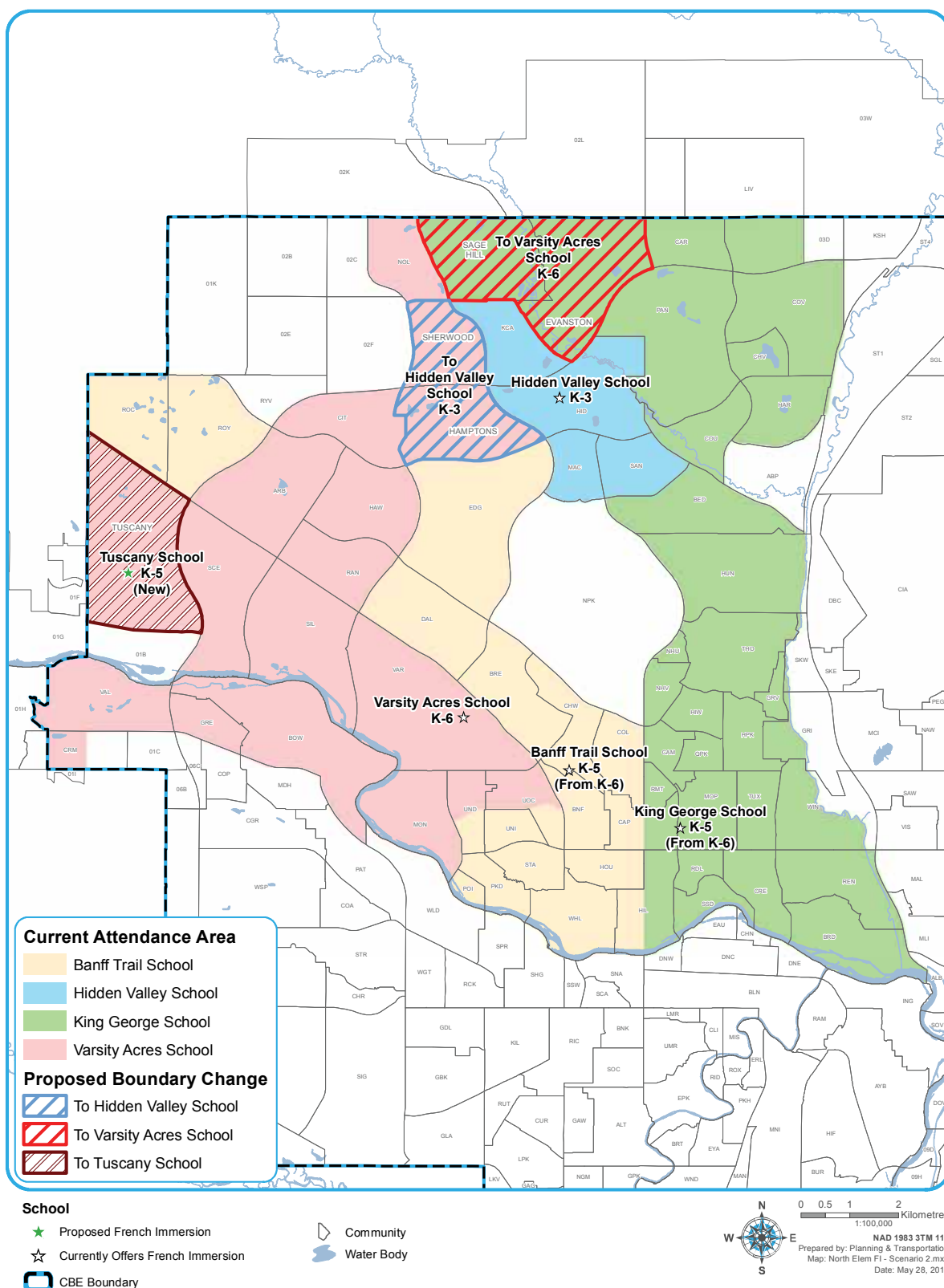


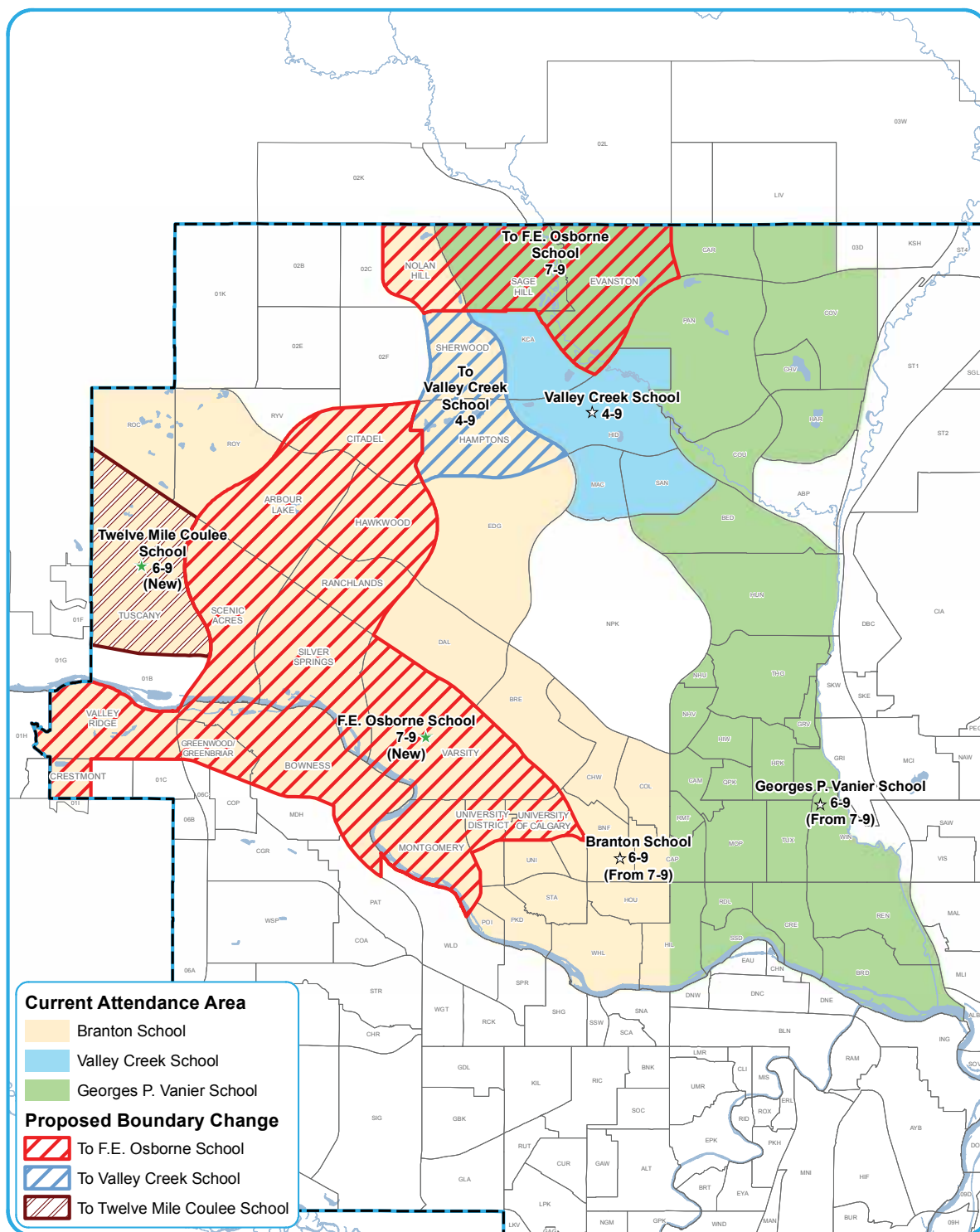


Proposed Elementary Early French Immersion Program Boundaries



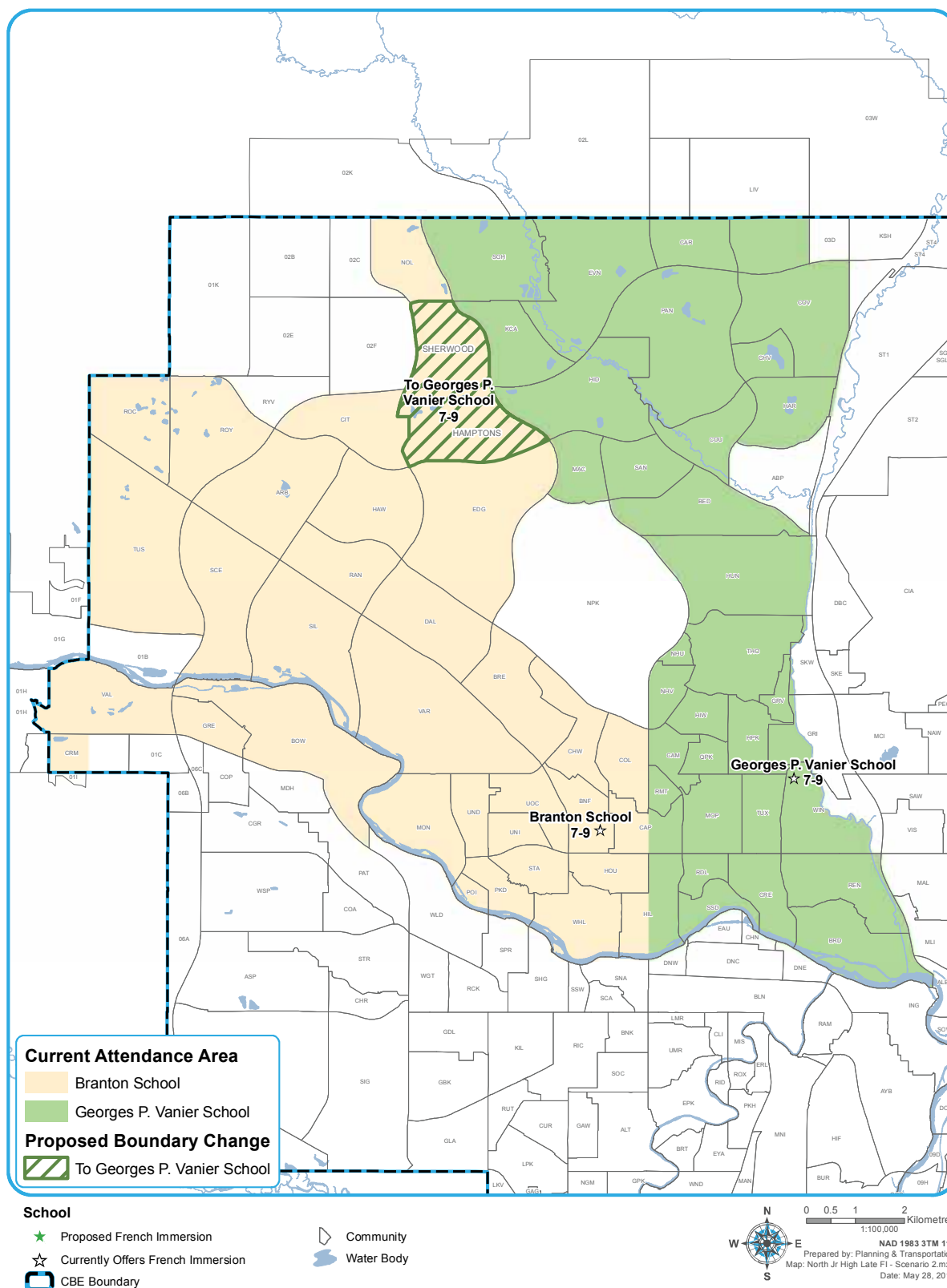


Proposed Middle/Junior High Early French Immersion Program Boundaries





Proposed Junior High Late French Immersion Program Boundaries





Early and Late French Immersion Programs in Northwest and North Central Calgary

Add three new locations, several grade configuration changes, boundary changes

	School	Current	Scenario B
Elementary Schools	Banff Trail School Instructional Space: 450 2017 Enrolment: 454	K-6 Early French Immersion Program	K-5 Early French Immersion Program (Projected: 400-450) ■ Grade 6 moves to Branton School
	Eric Harvie School Instructional Space: 600 2017 Enrolment: 464	K-4 Regular Program	K-5 Regular Program (Projected: 500-575) ■ Grade 5 from the current catchment area added
	Hidden Valley School Instructional Space: 550 2017 Enrolment: 446 ■ Early: 242 ■ Regular Program: 204	K-3 Early French Immersion Program K-3 Regular Program	K-3 Early French Immersion Program (Projected: 260-285) ■ Hamptons, Sherwood communities added K-3 Regular Program (Projected: 190-205) ■ No change Total Projected: 450-490
	King George School Instructional Space: 650 2017 Enrolment: 607	K-6 Early French Immersion Program	K-5 Early French Immersion Program (Projected: 560-610) ■ Grade 6 moves to G.P. Vanier School ■ Evanston, Sage Hill communities move to Varsity Acres School
	Tuscany School Instructional Space: 700 2017 Enrolment: 358	K-4 Regular Program	K-5 Regular Program (Projected: 300-330) ■ Grade 5 from the current catchment area added K-5 Early French Immersion Program (Projected: 150-190) ■ For Tuscany community Total Projected: 450-520
	Varsity Acres School Instructional Space: 625 2017 Enrolment: 563	K-6 Early French Immersion Program	K-6 Early French Immersion Program (Projected: 475-550) ■ Evanston, Sage Hill communities added ■ Tuscany community - K-5 move to Tuscany School, Grade 6 moves to Twelve Mile Coulee School ■ Hamptons, Sherwood communities - K-3 move to Hidden Valley School, Grades 4-6 move to Valley Creek School
Middle/Junior High Schools	Branton School Instructional Space: 835 2017 Enrolment: 718 ■ Early: 348 ■ Late: 370	7-9 Early French Immersion Program 7-9 Late French Immersion Program	6-9 Early French Immersion Program (Projected: 200-250) ■ Grade 6 added from Banff Trail School ■ Varsity Acres School students move to F.E. Osborne School ■ Hamptons, Sherwood communities move to Valley Creek School ■ Tuscany community moves to Twelve Mile Coulee School 7-9 Late French Immersion Program (Projected: 325-350) ■ Hamptons, Sherwood communities move to G.P. Vanier School Total Projected: 525-600
	F.E. Osborne School Instructional Space: 735 2017 Enrolment: 420	7-9 Regular Program	7-9 Regular Program (Projected: 400-460) ■ No change 7-9 Early French Immersion Program (Projected: 200-225) ■ For students from new Varsity Acres School catchment area (incl. Evanston, Sage Hill communities) Total Projected: 600-685
	Georges P. (G.P.) Vanier School Instructional Space: 590 2017 Enrolment: 370 ■ Early: 120 ■ Late: 100 ■ Regular Program: 150	7-9 Early French Immersion Program 7-9 Late French Immersion Program 7-9 Regular Program	6-9 Early French Immersion Program (Projected: 210-275) ■ Grade 6 added from King George School ■ Evanston, Sage Hill communities move to F.E. Osborne School 7-9 Late French Immersion Program (Projected: 115-130) ■ Hamptons, Sherwood communities added 7-9 Regular Program (Projected: 90-105) ■ No change Total Projected: 415-510
	Twelve Mile Coulee School Instructional Space: 885 2017 Enrolment: 840	5-9 Regular Program	6-9 Regular Program (Projected: 600-650) ■ Grade 5 at Tuscany and Eric Harvie schools 6-9 Early French Immersion Program (Projected: 85-105) ■ For Tuscany community Total Projected: 685-755
	Valley Creek School Instructional Space: 840 2017 Enrolment: 724 ■ Early: 216 ■ Regular Program: 508	4-9 Early French Immersion Program 4-9 Regular Program	4-9 Early French Immersion Program (Projected: 285-325) ■ Hamptons, Sherwood communities added 4-9 Regular Program (Projected: 335-375) ■ No change Total Projected: 620-700

Projected = Highest projected enrolment range for 2019-22