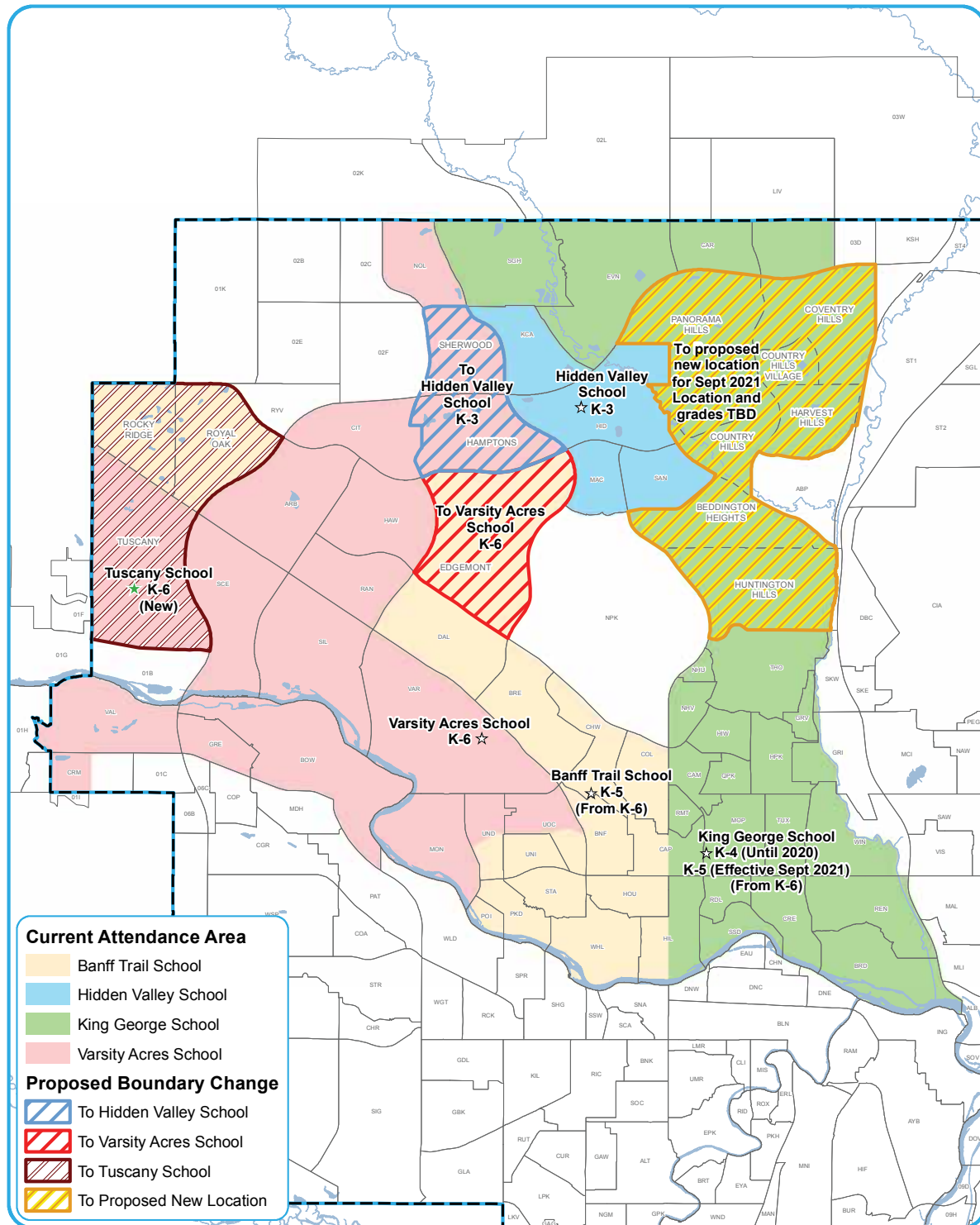




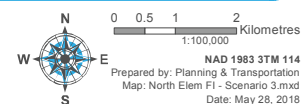
## Proposed Elementary Early French Immersion Program Boundaries



### School

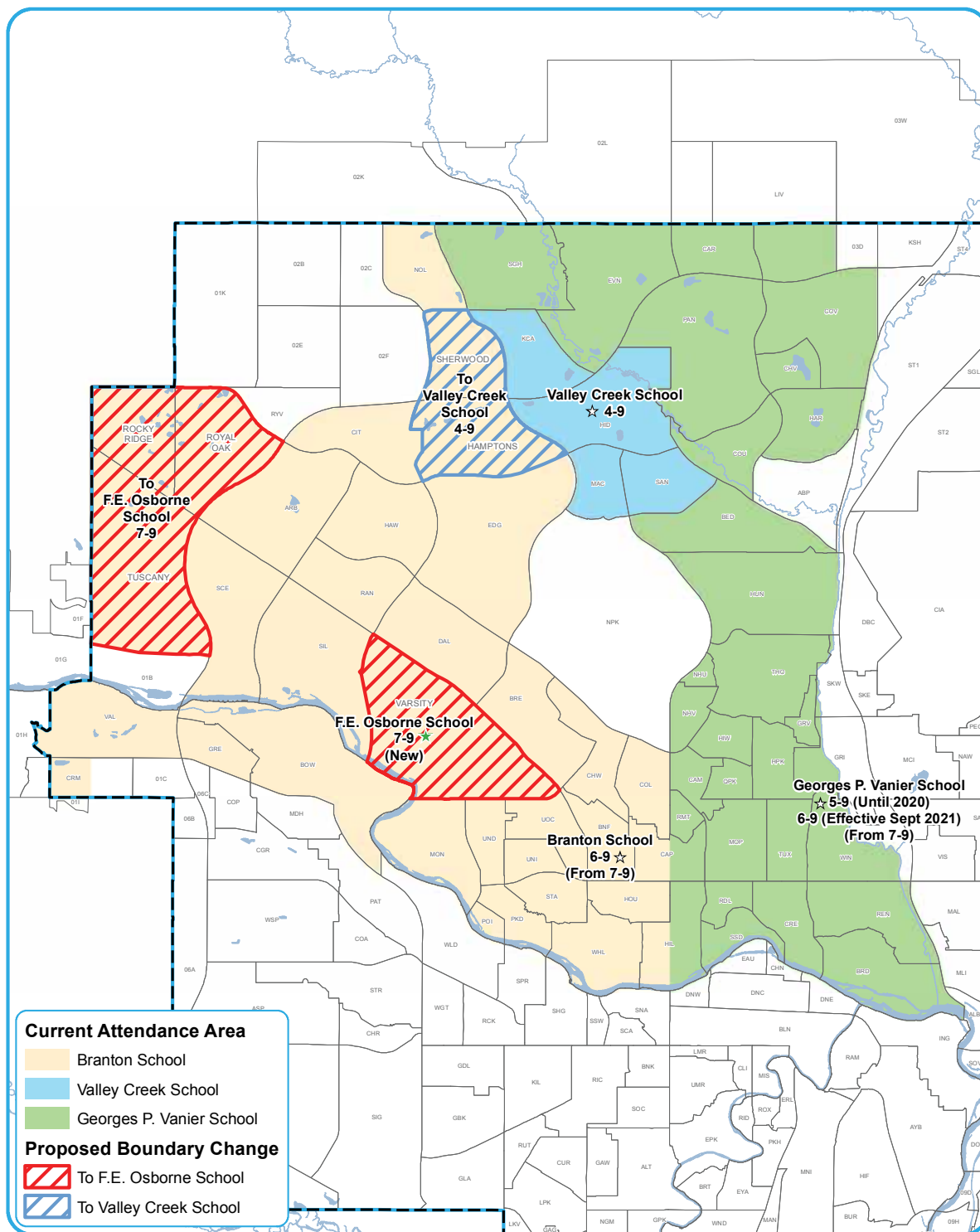
- ★ Proposed French Immersion
- ☆ Currently Offers French Immersion
- CBE Boundary

- Community
- Water Body





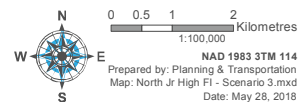
## Proposed Middle/Junior High Early French Immersion Program Boundaries



### School

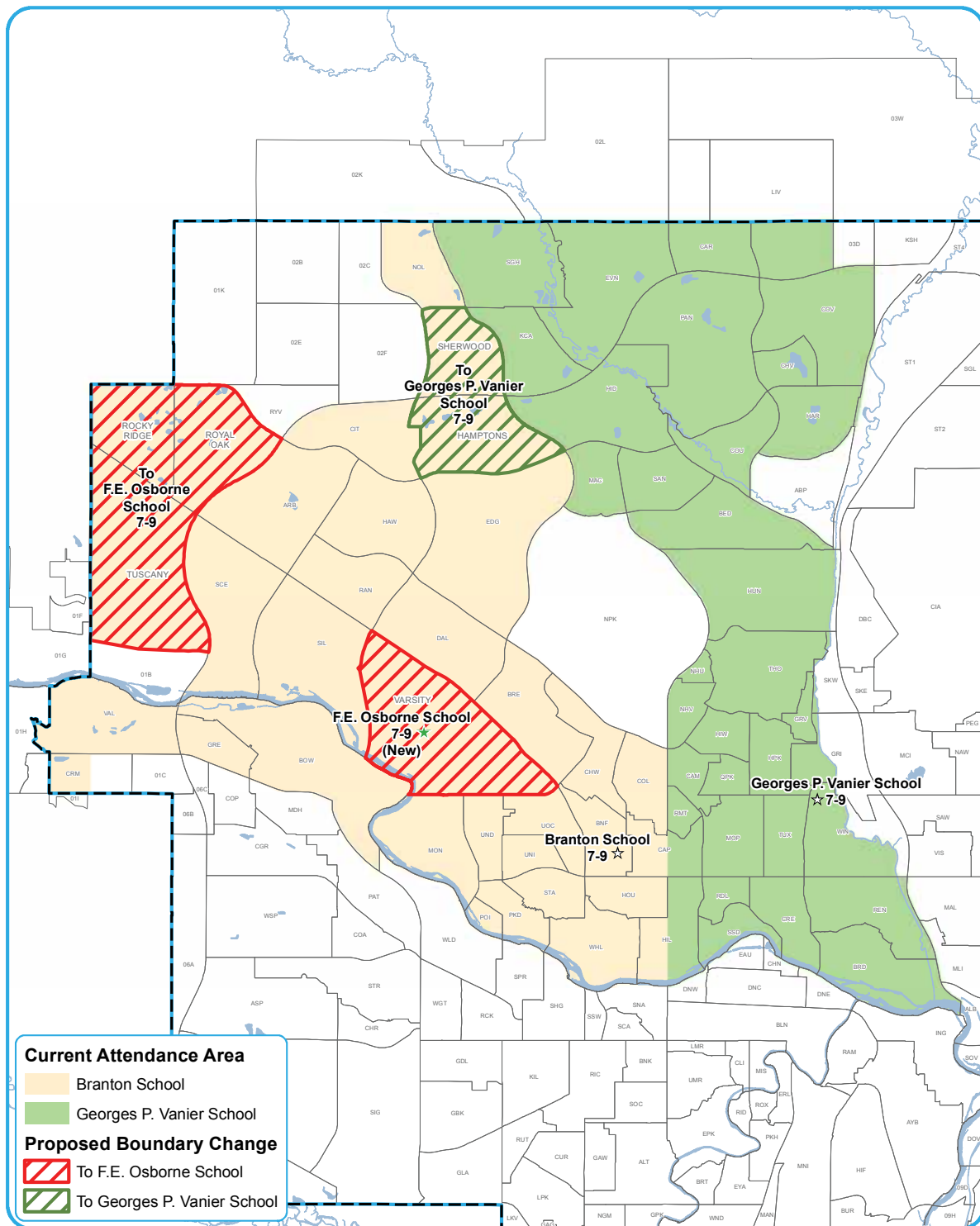
- ★ Proposed French Immersion
- ☆ Currently Offers French Immersion
- CBE Boundary

- Community
- Water Body





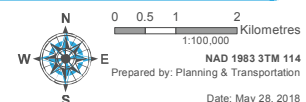
## Proposed Junior High Late French Immersion Program Boundaries



### School

- ★ Proposed French Immersion
- ☆ Currently Offers French Immersion
- CBE Boundary

- Community
- Water Body





## Early and Late French Immersion Programs in Northwest and North Central Calgary

**Add three new locations (two in 2019, one in 2021)  
several grade configuration changes, boundary changes**

	School	Current	Scenario C
Elementary Schools	<b>Banff Trail School</b> Instructional Space: 450 2017 Enrolment: 454	K-6 Early French Immersion Program	<b>K-5 Early French Immersion Program</b> (Projected: 325-375) ③Grade 6 moves to Branton School ③Rocky Ridge/Royal Oak communities move to Tuscany School ③Edgemont community moves to Varsity Acres School
	<b>Eric Harvie School</b> Instructional Space: 600 2017 Enrolment: 464	K-4 Regular Program	<b>K-5 Regular Program</b> (Projected: 500-575) ③Grade 5 from the current catchment area added
	<b>Hidden Valley School</b> Instructional Space: 550 2017 Enrolment: 446 ③Early: 242 ③Regular Program: 204	K-3 Early French Immersion Program  K-3 Regular Program	<b>K-3 Early French Immersion Program</b> (Projected: 260-285) ③Hamptons, Sherwood communities added  <b>K-3 Regular Program</b> (Projected: 190-205) ③No change Total Projected: 450-490
	<b>King George School</b> Instructional Space: 650 2017 Enrolment: 607	K-6 Early French Immersion Program	<b>K-4 Early French Immersion Program (2019-20)</b> (Projected: 500-560) ③Grades 5 and 6 move to G.P. Vanier School  <b>K-5 Early French Immersion Program (2021 and beyond)</b> ③Grade 5 added from G.P. Vanier School ③Potential move (communities, school and grades TBD)
	<b>Tuscany School</b> Instructional Space: 700 2017 Enrolment: 358	K-4 Regular Program	<b>K-5 Regular Program</b> (Projected: 300-330) ③Grade 5 from the current catchment area added  <b>K-6 Early French Immersion Program</b> (Projected: 300-360) ③For Rocky Ridge/Royal Oak, Tuscany communities Total Projected: 600-690
	<b>Varsity Acres School</b> Instructional Space: 625 2017 Enrolment: 563	K-6 Early French Immersion Program	<b>K-6 Early French Immersion Program</b> (Projected: 465-500) ③Edgemont community added ③Tuscany community moves to Tuscany School ③Hamptons, Sherwood communities - K-3 move to Hidden Valley School, Grades 4-6 move to Valley Creek School
Middle/Junior High Schools	<b>Branton School</b> Instructional Space: 835 2017 Enrolment: 718 ③Early: 348 ③Late: 370	7-9 Early French Immersion Program  7-9 Late French Immersion Program	<b>6-9 Early French Immersion Program</b> (Projected: 350-400) ③Grade 6 added from Banff Trail School ③Hamptons, Sherwood communities move to Valley Creek School ③Rocky Ridge/Royal Oak, Tuscany, Varsity communities move to F.E. Osborne School  <b>7-9 Late French Immersion Program</b> (Projected: 275-300) ③Hamptons, Sherwood communities move to G.P. Vanier School ③Rocky Ridge/Royal Oak, Tuscany, Varsity communities move to F.E. Osborne School Total Projected: 625-700
	<b>F.E. Osborne School</b> Instructional Space: 735 2017 Enrolment: 420	7-9 Regular Program	<b>7-9 Regular Program</b> (Projected: 400-440) ③ No change  <b>7-9 Early French Immersion Program</b> (Projected: 160-190) ③For Rocky Ridge/Royal Oak, Tuscany and Varsity communities  <b>7-9 Late French Immersion Program</b> (Projected: 80-100) ③For Rocky Ridge/Royal Oak, Tuscany and Varsity communities Total Projected: 640-730
	<b>Georges P. (G.P.) Vanier School</b> Instructional Space: 590 2017 Enrolment: 370 ③Early: 120 ③Late: 100 ③Regular Program: 150	7-9 Early French Immersion Program  7-9 Late French Immersion Program  7-9 Regular Program	<b>5-9 Early French Immersion Program (6-9 in 2021 and beyond)</b> (Projected: 275-345) ③Grades 5 and 6 added from King George School (Grade 5 back to King George School in 2021 and beyond) ③Potential move (communities, school and grades TBD)  <b>7-9 Late French Immersion Program</b> (Projected: 115-130) ③Hamptons, Sherwood communities added  <b>7-9 Regular Program</b> (Projected: 90-105) ③ No change Total Projected: 480-580
	<b>Twelve Mile Coulee School</b> Instructional Space: 885 2017 Enrolment: 840	5-9 Regular Program	<b>6-9 Regular Program</b> (Projected: 600-650) ③ Grade 5 at Tuscany and Eric Harvie schools
	<b>Valley Creek School</b> Instructional Space: 840 2017 Enrolment: 724 ③Early: 216 ③Regular Program: 508	4-9 Early French Immersion Program  4-9 Regular Program	<b>4-9 Early French Immersion Program</b> (Projected: 285-325) ③Hamptons, Sherwood communities added  <b>4-9 Regular Program</b> (Projected: 335-375) ③ No change Total Projected: 620-700