



Kindergarten Registration Guide

Great Learning Starts Here!

Our Kindergarten Registration Guide will assist you in ensuring you are prepared for every part of school registration. Please visit the [CBE kindergarten website](#) for additional information on the following sections.

Getting Started

You will need to gather a few documents and understand the requirements before registering your child. Important questions to consider might be:

- Is my child old enough to enroll?
- Do I have the correct documents?
- Do I want my child registered in an alternative learning program?

When to register

You may register your child for kindergarten as long as they turn five years old on or before Dec. 31 of the school year they will be in kindergarten. For example, when registering for the 2026-27 school year, your child must turn five on or before Dec. 31, 2026.

Important documents for registration

You must provide proof of your child's age, legal name, citizenship and address. Acceptable identification documents can include the following:

- Canadian birth certificate or card
- Your child's Canadian passport
- Canadian Indigenous status card

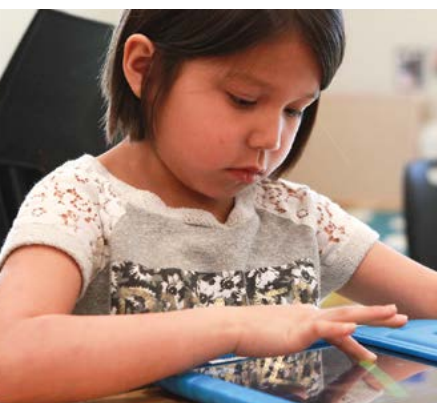
Helpful Tip!

To save time, scan the documents to your computer ahead of time to have them handy during registration.

Accepted forms of proof of address and other accepted forms of identification can be found on the online registration form (see Registration section of this Guide). Non-Canadian students see registration process in registration section of this guide or visit the [CBE website](#) for more details.

Choosing a CBE school

CBE offers many choices for your child. Your child is designated to a regular program school and a number of alternative program schools based on your address. You will need to decide what school you want your child to attend.





Find your designated school(s)

To find out which schools your child can attend, use the [Find a School tool](#) on the CBE website. This tool will allow you to see your child's designated school as well as other designated schools, like middle/junior schools and high schools. You can search by address, school name, or filter by a specific program.

Helpful Tip!

When using the [Find a School tool](#), click on the school name to view the school profile. This will tell you important school information such as: enrolment, administration, grades offered and programs.

Before and after school care

Third-party providers may offer childcare or before and after-school programs in some of our schools. A list of childcare providers is available on [our website](#). Please note that this list is subject to change. We recommend contacting childcare providers directly to find out more.

Registration

Kindergarten registration is now online!

Helpful Tip!

Schools operating at or over their capacity will follow the lottery process. Learn more about the [Lottery process at CBE](#).

Registering as a Canadian student

To register your child for school, you must create a [SchoolEngage](#) account. Once an account is created, you will receive confirmation and can register your child.

Please refer to [our website](#) for complete registration information details.

Registering as a non-Canadian student

Students who are not Canadian students must create a [SchoolEngage](#) account and complete the registration form.

Once you have submitted the registration form through SchoolEngage, CBE Welcome Centre staff will contact you to arrange an appointment to complete the registration.

If you have any questions, please call the CBE Welcome Centre at 403-817-7789.



Sign up for a MyCBE Account

Once your child is registered, you will need to create a MyCBE Account. Having a MyCBE Account means you can:

- Access your child's grades and attendance and noon supervision
- Pay fees online and request waivers
- Book parent-teacher conferences

Helpful Tip!

To create your MyCBE account, you will need the email address you provided on the registration form and your child's CBE Student ID and date of birth. Refer to [Creating a MyCBE Account | Instructions](#), for more information.



Once you complete registration the school will process your registration form. The school will assign and provide you with your child's CBE Student ID.

Transportation

Many families walk, bike, drive or take transportation to and from school. How your child will get to school is an essential factor to consider as you plan to support your child's kindergarten experience.



Yellow school bus service

One-way yellow bus service is available to kindergarten children who attend their designated school and live beyond the walk zone.

Registering for transportation

Fees and service levels for yellow school bus service are announced annually in May. All families must register for transportation every year using their [MyCBE account](#). You must submit your application by the June deadline to ensure you will have transportation in place for the first day of school. Your bus stop location and time will be available by mid-August.



If you register after the deadline, your child may not be able to ride the bus for up to six weeks, and your bus stop may be further away from your home, as your address would not have been considered when the route was being planned. See our [Busing & Transportation](#) page for more information.

Morning kindergarten

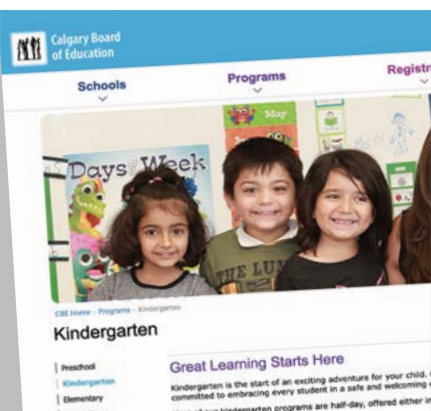
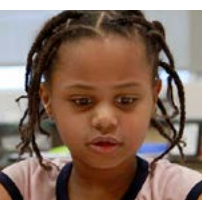
The bus will pick up your child from their assigned bus stop to bring them to school and you will be responsible for picking them up at the end of the morning.

Afternoon kindergarten

You are responsible for getting your child to school and the bus will drop them off at their assigned bus stop at the end of the school day.

Kindergarten students must have an adult present at the bus door during drop-offs or pick-ups at the bus stop.





We are Here to Help!

All of this information and more is available on our website. If you have any questions about registration that you cannot find on the website, please connect directly with the school where you will register, or call the CBE Public Information Line at 403-817-4000.

Note | processes and information are subject to change from year to year.

Helpful Tip!

If you think your child may need transportation services for the next school year, please register by the deadline. Fees are not due at the time of registration and service can be canceled by the end of September with no financial penalty.

Please refer to the webpages below to learn more:

Kindergarten Program

<https://www.cbe.ab.ca/programs/kindergarten/Pages/default.aspx>

Program Options

<https://cbe.ab.ca/programs/program-options/Pages/default.aspx>

Registration for Kindergarten to Grade 9 for New Students

<https://cbe.ab.ca/registration/registration/Pages/Kindergarten-to-Grade-9.aspx>

Alternative Program Registration

<https://cbe.ab.ca/registration/registration/Pages/alternative-programs.aspx>

CBE Welcome Centre

<https://cbe.ab.ca/welcome/Pages/default.aspx>

Find a School Tool

<https://cbe.ab.ca/schools/find-a-school/Pages/default.aspx>

Busing and Transportation

<https://cbe.ab.ca/schools/busing-and-transportation/Pages/default.aspx>

Stay Informed and Subscribe to School Messages

<https://cbe.ab.ca/news-centre/school-messages/Pages/default.aspx>