

**report to
Board of Trustees**

2025-26 Modular Classroom Program

Date	October 29, 2024
Meeting Type	Regular Meeting, Public Agenda
To	Board of Trustees
From	Joanne Pitman Chief Superintendent of Schools
Purpose	Decision
Originator	Dany Breton, Superintendent, Facilities and Environmental Services
Governance Policy Reference	Operational Expectations OE-7: Communication With and Support for the Board OE-9: Facilities
Resource Person(s)	Trevor Fenton, Director, Facility Projects Catherine Ford, Director Planning Jeff Quigley, Manager, Planning

1 | Recommendation

It is recommended:

THAT the Board of Trustees approves the 2025-26 Modular Classroom Program submission.

2 | Issue

The provincial government requires a prioritized list of modular classroom requests from all school boards annually.

3 | Background

Modular classrooms can make an important contribution to bettering the student learning experience by relieving accommodation pressures within a school. In October 2024, revised Eligibility Filters for Modular Classrooms (Attachment I) and the Modular Classroom Ranking Criteria (Attachment II) were proposed to the Board of Trustees. The modular classroom submission within this report was formulated using these updated filters and criteria.

In March 2024, the province approved 12 new modular classrooms, the relocation of six modular classrooms and the disposition of zero modular classrooms (68 new units, 12 relocations and one disposition were requested). On August 2, 2024, an In-Year Modular Request was approved by the province for an additional 35 new modular classrooms and the relocation of five modular classrooms.

The pressure on the CBE system caused by continued exceptional enrolment growth over the past four years is a key consideration in this year’s proposed submission. This pressure is further compounded by the fact that only one new school is currently under construction, one school has been approved for construction and how it typically takes three to four years for a new school to be constructed after approval.

The new Modular Classroom Ranking Criteria, Category A allows for greater granularity in differentiating between schools when most of those being considered are experiencing utilization rates above the 100% utilization mark. The following table is the matrix used for the 2025-26 year:

CATEGORY A	
Enrolment, Utilization, Projection	
Strength of enrolment and utilization into the future (Projected Utilization in 3rd Year)	
Projected Utilization is less than 89%	0
Projected Utilization is between 90% to 99%	5
Projected Utilization is between 100 to 104%	10
Projected Utilization is between 105 to 109%	15
Projected Utilization is between 110 to 114%	20
Projected Utilization is between 115 to 119%	25
Projected Utilization is between 120 to 124%	30
Projected Utilization is between 125 to 129%	35
Projected Utilization is between 130 to 134%	40
Projected Utilization is between 135 to 139%	45
Projected Utilization is greater than 140%	50

4 | Analysis

The analysis below recommends the following submission for the 2025-26 Modular Classroom Program (MCP):

- One modular unit disposition request (decreasing capacity of one school); and
- 64 new modular unit requests (increasing capacity of 17 schools).

Modular Classroom Additions – Eligible Schools

A Modular Classroom Eligibility Filter Review was conducted using the latest 5 year enrolment projection data. From this, a list of all schools projected to be over 90% utilization within a 3 year time frame was assembled (2024-26) (Attachment III).

42 schools had a projected utilization of 90% or higher and met the filter criteria to be eligible for points ranking analysis. As noted on page 7, 25 schools are not considered appropriate for modular additions at this time. The following 17 schools are being recommended for modular additions. All of these had above average Category A points (based on projected utilization), a high Opening Day 2024 utilization rate and are listed in alphabetical order below, prior to ranking:

- Annie Foote School
- Annie Gale School
- Centennial High School
- Colonel Macleod School
- Dr. E. P. Scarlett High School
- Ernest Manning High School
- Georges P. Vanier School
- John G. Diefenbaker High School
- Lester B. Pearson High School
- Manmeet Singh Bhullar School
- Mount Royal School
- O. S. Geiger School
- Panorama Hills School
- Saddle Ridge School
- Sibylla Kiddle School
- Terry Fox School
- Vincent Massey School

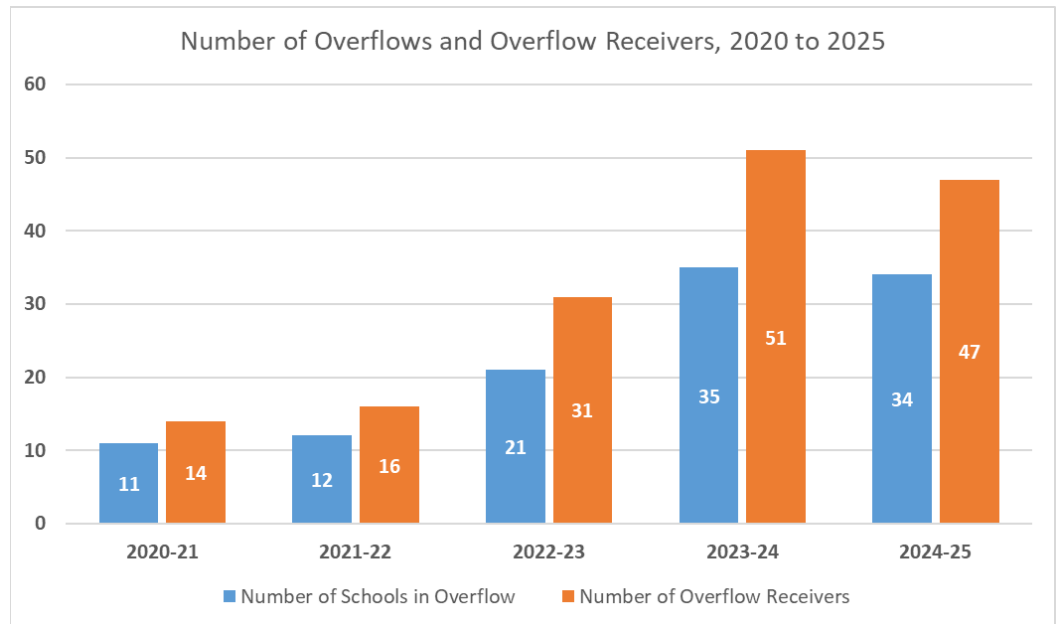
The Modular Classroom Points Assignment (Attachment IV) summarizes the points assignments for the schools listed above.

Several factors that affect the viability and cost of modular unit additions were considered in conjunction with the points assignment to arrive at the list of schools recommended for additional modular classrooms (new or relocated units). Considerations include:

- Schools above 100% utilization or in overflow;
- Firefighting access to the proposed location;
- Washroom facilities at the proposed receiving site;
- Number of parking stalls at the proposed receiving site;
- Access to existing garbage enclosures and parking areas;
- Access for modular delivery;
- Buffer zone(s) to existing City or CBE playfields; and
- The presence of connection corridors used to tie new modular classrooms into existing schools.

The number of schools reaching capacity increased during the 2023-24 school year and has continued into the 2024-25 school year. Record enrolment growth, largely due to new migrants to Calgary, both interprovincial and international, continues to put pressure on the system. This has caused the number of schools

in overflow status to rise. Below is a five-year trend of schools in overflow. It shows the number of schools in an overflow status, as well as the number of schools receiving overflowed students. We expect this trend to continue without new school construction.



While the whole system has felt the continued growth of the city, there are certain areas that are particularly strained. The table below shows the year-over-year opening day growth, by Area. Areas 3 and 5 saw the largest growth between opening day 2023 and 2024. Table 1 below also shows the number of schools currently being overflowed, highlighting capacity concerns in Areas 4, 5 and 7.

Area	Total Enrolment on Opening Day 2023	Total Enrolment on Opening Day 2024	Growth	# of Schools in Overflow
1	19481	19502	21	3
2	18282	18749	467	2
3	16547	17891	1344	3
4	20171	20928	757	11
5	25586	26910	1324	8
6	18159	18907	748	0
7	19704	20479	775	7
	137930	143366	5436	34

Of the 64 new modulars requested, 26 are for schools in Area 4; 8 for Area 5; and 12 are for Area 7. Combined, the modulars directed to the highest need Areas 4, 5, and 7, constitute 72% of the total number of requests (46 units).

Modular Classroom Additions – Recommended Schools for New Units

Following review of the school sites and consideration of all factors, obtaining new modular units for the following locations is recommended, in priority sequence:

Priority	School	Reasoning
1	John G. Diefenbaker High School	Opening Day utilization for this school was 105%. It has a projected 3-yr utilization rate of 131% and continues to see growth from the surrounding / developing communities. The creation of additional high school capacity is also a priority area identified in the 10 Year Student Accommodation and Facilities Strategy (10Yr SAFS). Six new units will be requested.
2	Dr. E. P. Scarlett High School	Opening Day utilization for this school was 124%. It has a projected 3-yr utilization rate of 132% and continues to see growth from the surrounding / developing communities. The creation of additional high school capacity is also a priority area identified in the 10Yr SAFS. Six new units will be requested.
3	Mount Royal School	Opening Day utilization for this school was 102%. This school is currently capped with students being overflowed to Vincent Massey School and A.E. Cross School. Continued growth of communities in central Calgary will continue to put strain on this school. Without the overflows in place, this school would be at a utilization rate of 139%. Two new units will be requested.
4	Saddle Ridge School	Opening Day utilization for this school was 106%. This school is currently capped with students being overflowed to Hugh A. Bennett School. Continued growth of developing communities in the NE will continue to put strain on this school. Without the overflows in place, this school would be at a utilization rate of 115%. Two new units will be requested.
5	Terry Fox School	Opening Day utilization for this school was 94%. This school is currently capped with students being overflowed to Ian Bazalgette School. Continued growth of developing communities in the NE will continue to put strain on this school. Without the overflows in place, this school would be at a utilization rate of 103% and has a projected 3-yr utilization rate of 133%. Six new units will be requested.
6	Centennial High School	Opening Day utilization for this school was 129%. This school is currently the overflow receiver for Joane Cardinal-Schubert High School. Continued growth of communities in the SE and the lack of available overflow receivers in the southern half of CBE will continue to put strain on this school. The creation of additional high school capacity is also a priority area identified in the 10Yr SAFS. Six new units will be requested.
7	Lester B. Pearson High School	Opening Day utilization for this school was 116%. It has a projected 3-yr utilization rate of 110% and continues to see growth from the surrounding / developing communities. The creation of additional high school capacity is also a priority area identified in the 10Yr SAFS. Six new units will be requested.
8	Georges P. Vanier School	G.P. Vanier has an outstanding Area, Capacity and Utilization (ACU) adjustment that is not reflected in the data and results in a higher utilization rate than is in official documentation. Expected changes to the ACU will result in Opening Day enrolment of 107% and projected 3-yr utilization of 121%. Opening Day utilization for this school according to official documentation was 98% with a projected 3-yr utilization rate of 112% and continues to see growth from the surrounding / developing communities. Two new units will be requested.

9	Annie Foote School	Opening Day utilization for this school was 93%. This school is currently the overflow receiver for Prairie Sky School. Continued growth of communities in the NE will continue to put strain on this school. In three years, this school is projected to have a utilization rate of 121%. Two new units will be requested.
10	O. S. Geiger School	Opening Day utilization for this school was 112%. This school is currently the overflow receiver for Grant MacEwan School. Continued growth of communities in the NE will continue to put strain on this school. In three years, this school is projected to have a utilization rate of 123%. Four new units will be requested.
11	Vincent Massey School	Opening Day utilization for this school was 100%. This school is currently the overflow receiver for Mount Royal School. Continued growth of communities in the SW will continue to put strain on this school. In three years, this school is projected to have a utilization rate of 116%. Four new units will be requested.
12	Ernest Manning High School	Opening Day utilization for this school was 116%. It has a projected 3-yr utilization rate of 109% and continues to see growth from the surrounding / developing communities. The creation of additional high school capacity is also a priority area identified in the 10Yr SAFS. Six new units will be requested.
13	Colonel Macleod School	Opening Day utilization for this school was 104%. It has a projected 3-yr utilization rate of 109% and continues to see growth from the surrounding / developing communities. Two new units will be requested.
14	Panorama Hills School	Opening Day utilization for this school was 96%. It has a projected 3-yr utilization rate of 106% and continues to see growth from the surrounding / developing communities. In addition to high expected utilization rates in the future, the request for this school has been prioritized in to ease pressure on Captain Nichola Goddard School which cannot accommodate modulars and had an opening day utilization of 115%. Two new units will be requested.
15	Manmeet Singh Bhullar School	Opening Day utilization for this school was 104%. It has a projected 3-yr utilization rate of 104% and continues to see growth from the surrounding / developing communities. Four new units will be requested.
16	Sibylla Kiddle School	Opening Day utilization for this school was 105%. It has a projected 3-yr utilization rate of 99% and continues to see growth from the surrounding / developing communities. Two new units will be requested.
17	Annie Gale School	Opening Day utilization for this school was 104%. It has a projected 3-yr utilization rate of 97% and continues to see growth from the surrounding / developing communities. Two new units will be requested.

The Modular Classrooms Recommended for New Units (Attachment V) summarizes the justification for the schools listed above, including the number of units requested and projected utilization rates. In total, 64 new units are proposed to be requested, for a total increase of 1600 student spaces.

Schools Excluded from the List of Modular Unit Addition Requests

Following review of the school sites and consideration of all factors, the addition of modular units at the following schools is not recommended:

School	Reasoning
Alternative High School	Enrolment can be managed as students in the program can be supported through community schools in the CBE.
Buffalo Rubbing Stone School	Previously approved for modular classrooms.
Cambrian Heights School	Opening Day utilization did not exceed 100%. There was lower than anticipated enrolment from the home area and Evanston overflow. Removing from scope for this year.
Captain Nichola Goddard School	Site review by Facility Projects determined this school will not be able to receive additional modulars classrooms. Modulars are instead being requested for its feeder school, Panorama Hills.
Chief Justice Milvain School	Low Category A points based on utilization. Did not meet threshold for further analysis.
Colonel Irvine School	Previously approved for modular classrooms.
Coventry Hills School	Low Category A points based on utilization. Declining enrolment past 2026.
Grant MacEwan School	Previously approved for modular classrooms.
Guy Weadick School	Site review by Facility Projects determined this school will not be able to receive additional modulars classrooms.
Ian Bazalgette School	Previously approved for modular classrooms.
Jennie Elliott School	Low Category A points based on utilization. Did not meet threshold for further analysis.
Joane Cardinal-Schubert High School	Previously approved for modular classrooms.
Mahogany School	Previously approved for modular classrooms.
Marlborough School	Low Category A points based on utilization. Did not meet threshold for further analysis.
Monterey Park School	Opening Day utilization did not exceed 100%. Removing from scope for this year.
Nelson Mandela High School	Previously approved for modular classrooms.
North Trail High School	Previously approved for modular classrooms.
Nose Creek School	Site review by Facility Projects determined this school will not be able to receive additional modulars classrooms.
Peter Lougheed School	Previously approved for modular classrooms.
Prairie Sky School	Previously approved for modular classrooms.
Prince Of Wales School	Low Category A points based on utilization. Did not meet threshold for further analysis.
Silver Springs School	Low Category A points based on utilization. Did not meet threshold for further analysis.
Sir Wilfrid Laurier School	Low Category A points based on utilization. Did not meet threshold for further analysis.

Stanley Jones School	Opening Day utilization did not exceed 100%. Removing from scope for this year.
Thomas B. Riley School	Low Category A points based on utilization. Did not meet threshold for further analysis.

The Modular Classrooms Excluded from Modular Unit Additions (Attachment VI) summarizes the justification for the schools listed above.

Disposition/Relocation of Existing Modular Classrooms

Alberta Education approves the use of modular classrooms to alleviate emergent, short to medium-term growth pressures within a school jurisdiction. The MCP is intended to address the typical growth cycle of a community. Generally speaking, at some point, a community’s school-aged population will peak and begin to decline. Decreased enrolment results in a reduction of the utilization for a school and higher operating costs per student. Removal and relocation of modular classrooms to other schools or jurisdictions where demographic pressures are high offers an alternative approach to adjusting catchment areas or grade configurations to optimize utilization rates. The Operations and Maintenance (O&M) Funding Grant framework maximizes provincial funding for schools that operate at a utilization value of 85% or higher.

Some CBE-owned modular classrooms in the inventory are older and have exceeded their design lifecycle. Such units may require significant investment to improve their condition. Disposition of modular units that have exceeded their lifecycle helps increase utilization rates of underutilized schools, reduces operating costs, and eliminates deferred maintenance for aging infrastructure that is not required to accommodate students now or into the medium term.

Since 2006, Alberta Education has retained ownership of modular classrooms provided to school jurisdictions. The demolition of modulars requires Alberta Education approval in accordance with the *Disposition of Property Regulation*.

Where modular classrooms are approved for relocation or disposition, site remediation work is required at the donor school to disconnect services, rehabilitate the site and restore landscaping. Costs for professional consulting, demolition, and site remediation would be requested from the province to support this work.

Modular classrooms identified for disposition and/or relocation are selected based on condition and school utilization, not through the ranking process used to identify schools best suited to acquire additional modular classrooms.

One modular classroom at one school is recommended for disposition as part of the 2025-26 Modular Classroom submission (i.e. removal of 25 student spaces), as follows:

Table 1: Modular Classrooms Recommended for Disposition							
School	2024 Provincial Capacity	2024 Opening Day Provincial Utilization	# of Modular Classrooms to be Dispositioned	Estimated Reduction to Provincial Capacity*	Estimated Provincial Capacity after Disposition	Estimated Provincial Utilization in 2025	Estimated Provincial Utilization in 2027
James Short Memorial School	471	47%	1	25	446	53%	59%

*The estimated reduction to Provincial Capacity assumes 25 student spaces per unit.

5 | Financial Impact

Alberta Education funds the relocation, addition and disposition of modular classrooms including consulting fees, construction costs and project expenses. However, Alberta Education does not fund connection corridors where required or new furniture, fixtures & equipment (FF&E) for modular relocation projects.

The CBE must provide capital funding for modular projects that include connection corridors or require Furniture, Fixtures & Equipment. Maintenance & Renewal (M&R) grants are not permitted to cover these project expenses on modular projects.

The total value for a modular classroom project includes the average base value, comprised of consulting fees, permits, transportation and installation costs (but excludes the purchase price of the modular itself) plus the value for site specific revisions associated to Code and Bylaw upgrades. Code and Bylaw upgrades are identified by The City of Calgary as conditions for receiving the development and building permits. Through experience, CBE is able to anticipate what Code and Bylaw upgrades may be required, but what will actually be needed is not known for certain until the development and building permit process is commenced. In the past, these upgrades could include, but are not limited to firefighting access provisions, parking lot expansions, additional washroom facilities, playfield relocations, site grading, etc. These additional scopes of work are directly driven by existing site conditions and these costs are used to calculate the Percentage Above Average Cost and Points Assignment which are referenced in Attachments VI and V respectively.

For new modular classroom addition projects, the average base project value has increased over time and now equals approximately \$240,000 per modular unit. Some costs associated with a modular project are not covered by Alberta Education and must be covered by CBE. This includes the cost for a connection corridor used to connect the modular(s) directly to the school (if one is required) as well as any FF&E costs in excess of the standard \$24,000 per unit provided by the government. The total estimated project value for each new modular addition project is summarized below:

Table 2: Summary of New Modular Classroom Costs			
School	Estimate of New Addition Costs (Covered by Alberta Education)	Connection Corridor Costs (Covered by CBE)	Estimate of Desks and Chairs and Smartboards* (Covered by CBE)
John G. Diefenbaker High School (Six Units)	\$1,460,000	\$0	\$174,000
Dr. E. P. Scarlett High School (Six Units)	\$1,520,000	\$0	\$174,000
Mount Royal School (Two Units)	\$922,000	\$0	\$58,000
Saddle Ridge School (Two Units)	\$923,000	\$0	\$58,000
Terry Fox School (Six Units)	\$2,105,000	\$0	\$174,000
Centennial High School (Six Units)	\$1,965,000	\$0	\$174,000
Lester B. Pearson High School (Six Units)	\$1,483,000	\$0	\$174,000
George P Vainer School (Two Units)	\$971,000	\$0	\$58,000
Annie Foote School (Two Units)	\$813,000	\$0	\$58,000
O. S. Geiger School (Four Units)	\$1,423,000	\$0	\$116,000
Vincent Massey School (Four Units)	\$1,320,000	\$0	\$116,000
Ernest Manning High School (Six Units)	\$1,700,000	\$175,000	\$174,000
Colonel Macleod School (Two Units)	\$1,190,000	\$0	\$58,000
Panorama Hills School (Two Units)	\$1,109,000	\$0	\$58,000
Manmeet Singh Bhullar School (Four Units)	\$1,459,000	\$0	\$116,000
Sibylla Kiddle School (Two Units)	\$630,000	\$250,000	\$58,000
Annie Gale School (Two Units)	\$1,251,000	\$0	\$58,000
Total	\$22,269,000	\$425,000	\$2,089,000

* Estimates for tables and chairs will fluctuate based on the amount of furniture being ordered. Alberta Education provides \$24,000 per modular unit for furniture, fixtures & equipment for new modular projects, which does not cover all costs. All funding noted for FF&E will be covered through the new Capital Reserve funded FF&E repository approved by the Board of Trustees on April 9, 2024. The FF&E funding required for the modular projects has still been included in the above table to indicate the total value required from the FF&E repository

For modular classroom disposition projects, the average total project value equals approximately \$100,000 per modular unit, which has increased in cost over last

year's estimate. The total estimated project value for each modular disposition project is summarized below:

Table 3: Summary of Modular Classrooms Disposition Costs		
School	Estimate of Disposition Costs (Covered by Alberta Education)	Estimate of Costs (Covered by CBE)
James Short Memorial	\$100,000	\$0
Total	\$100,000	\$0

The removal of modular classrooms impacts annual O&M costs, these effects include an increase in utilization, a reduction in utilities costs and a reduction in custodial and maintenance costs. The estimated reduction in O&M costs that would result from the disposition of one modular classroom at one school is approximately \$1,827.

In addition, a one-time reduction in deferred maintenance values can be realized through disposition of modular classrooms. The estimated one-time reduction in deferred maintenance that would result from the disposition of one modular classroom equals \$160,000.

6 | Implementation Consequence

Alberta Education requires school jurisdictions to submit their annual modular classroom program requests by November 1 each year.

Given the high number of modular classrooms being requested and the assumption that a significant portion of the CBE's request will be approved, the modular classroom projects will be bundled and released over the course of the 2025-26 school year. This approach ensures adequate time is provided to the modular manufacturer, consultants and contractors to complete designs, obtain permits and complete construction for all projects that receive provincial approval.

7 | Conclusion

The CBE recommends the request of one modular unit demolition and 64 new modular units for the 2025-26 school year.

The high number of new modular units being proposed is directly in response to the continued high enrolment being experienced and that will likely continue for several more years. It is further compounded by the fact that the CBE currently only has approval for the construction of one new school and that new schools take many years to open after they are announced.

JOANNE PITMAN

CHIEF SUPERINTENDENT OF SCHOOLS

ATTACHMENTS

Attachment I:	Eligibility Filters for Modular Classrooms
Attachment II:	Modular Classroom Ranking Criteria
Attachment III:	Modular Classroom Eligibility Filter Review September 2024
Attachment IV:	Modular Classroom Points Assignment 2024
Attachment V:	Modular Classrooms Recommended for New Units 2024
Attachment VI:	Modular Classrooms Excluded from Modular Unit Additions 2024

GLOSSARY – Developed by the Board of Trustees

Board: Board of Trustees

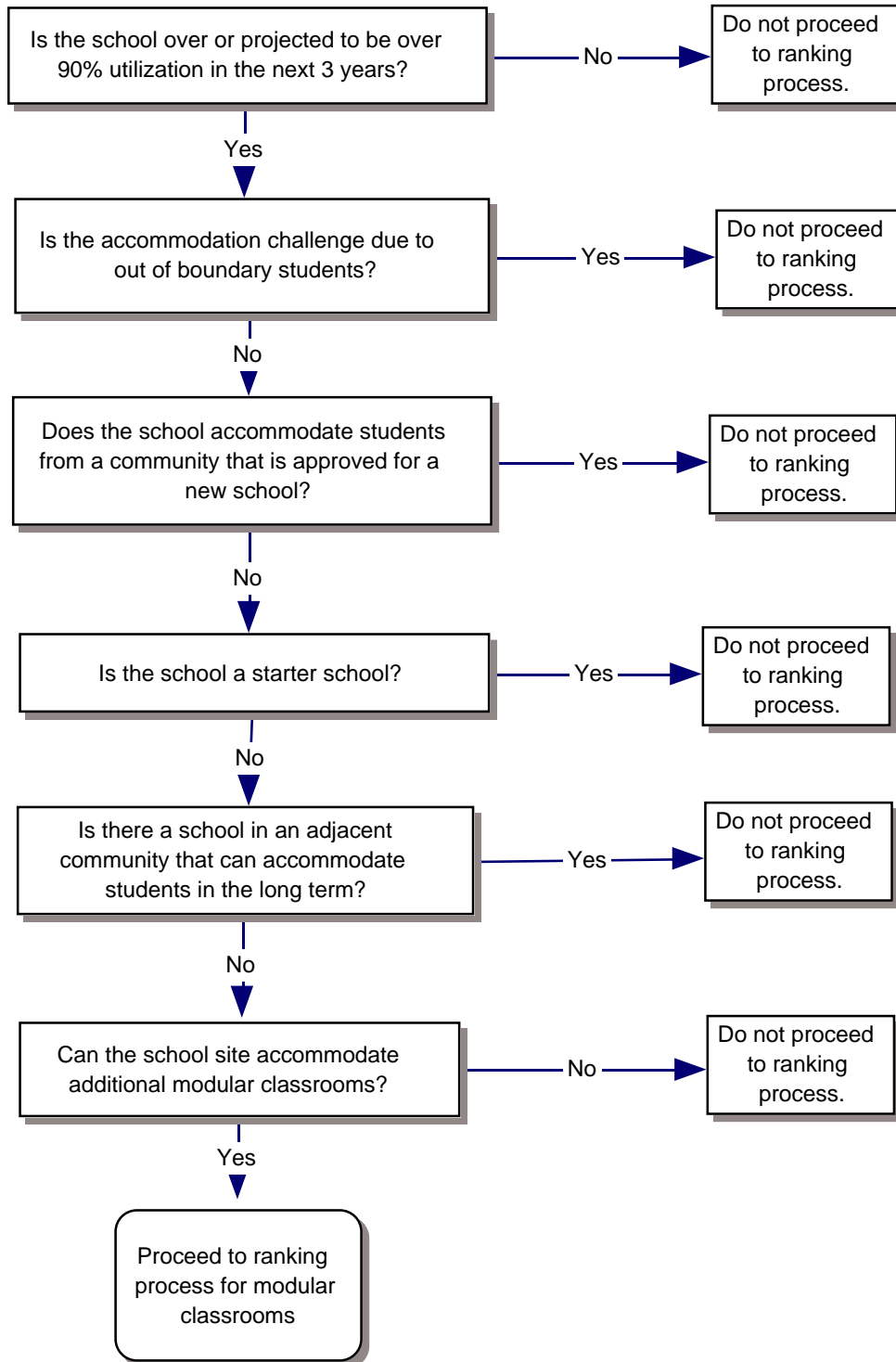
Governance Culture: The Board defined in policy the individual and collective behaviour required to establish a culture of good governance. These policies establish standards for how the Board performs its work, including policies that define the Board's job, its purpose and its accountability.

Board/Chief Superintendent Relationship: The Board defined in policy the degree of authority delegated to the Chief Superintendent, and set out how the Chief Superintendent's performance, and ultimately the organization's performance, will be evaluated.

Results: These policies define the outcome the organization is expected to achieve for each student it serves. The Results policies are the performance targets for the Chief Superintendent and the organization, and form the basis for judging the success of the organization and the Chief Superintendent on reasonable progress towards achieving the Results.

Operational Expectations: These policies define both the non-negotiable expectations and the clear boundaries within which the Chief Superintendent and staff must operate. The Chief Superintendent is required to comply with the Board's stated values about operational conditions and actions as set out in these policies.

Attachment I: Eligibility Filters for Modular Classrooms



Attachment II: Modular Classroom Ranking Criteria

CATEGORY A

Enrolment, Utilization, Projection

Strength of enrolment and utilization into the future (Projected 3-Year Utilization)

Projected Utilization is less than 89%	0
Projected Utilization is between 90% to 99%	5
Projected Utilization is between 100 to 104%	10
Projected Utilization is between 105 to 109%	15
Projected Utilization is between 110 to 114%	20
Projected Utilization is between 115 to 119%	25
Projected Utilization is between 120 to 124%	30
Projected Utilization is between 125 to 129%	35
Projected Utilization is between 130 to 134%	40
Projected Utilization is between 135 to 139%	45
Projected Utilization is greater than 140%	50

CATEGORY B

Site Features, Location

Ability to add modular units to the site. Ranking Range: 0 (difficult) to 1 (easy)

Site Size - ability to accommodate portables	1
Physical Obstructions (large trees, playground equip, catch basins, elec. Transformers, etc)	1
Site Grading, contours (slope to portables not good)	1
Additional Parking Requirements	1
Additional Washroom stall / sink requirements	1
Sight lines for Security, creates concealed areas	1
Ability to locate portables near entrance	1
Ability to connect with a corridor	1
Ease of connecting services, ie gas, power, data	1
Proximity to underground services restricting placement (ie: main elec, water, sewer)	1
Proximity and quantity of windows opposite the modulars	1
Fire rating of school exterior wall	1
Existing Firewall on school to accommodate addition	1
Distance from Street (within 15m will allow for more)	1
Location on site for aesthetics.....front vs. rear vs. side	1
Existing catch basins in vicinity to portables for roof drainage	1
Proximity to main sidewalks (downspouts cause icing)	1

CATEGORY C

Cost to Add Modular Units Compared to Average Cost to Add Modular Units to a Site

What is the anticipated cost of modular units at this site?

1 = Poor \$\$\$\$	(more than 25% more)	5
2 = Fair \$\$\$\$	(Between 20 to 24% more)	10
3 = Good \$\$\$	(Between 15 to 19% more)	15
4 = Very Good \$\$	(Between 10 to 14% more)	20
5 = Excellent \$	(Less than 9% more)	25

School Name	Is school over or projected to be over 90% utilization in next 3 years?	Is accommodation challenge due to out of boundary students?	Does school accommodate students from a community that is approved for a new school?	Is the school a starter school?	Is there a school in an adjacent community that can accommodate students in the long term?	Can the school site accommodate additional modular classrooms?	Does the school meet all the filters to proceed to the ranking process for modular classrooms?
A.E. Cross School	Yes	Yes	-	-	-	-	-
Abbeyside School	Yes	Yes	-	-	-	-	-
Alexander Ferguson School	Yes	Yes	-	-	-	-	-
Beddington Heights School	Yes	Yes	-	-	-	-	-
Bowness High School	Yes	Yes	-	-	-	-	-
Buchanan School	Yes	Yes	-	-	-	-	-
Cecil Swanson School	Yes	Yes	-	-	-	-	-
Central Memorial High School	Yes	Yes	-	-	-	-	-
Crescent Heights High School	Yes	Yes	-	-	-	-	-
Earl Grey School	Yes	Yes	-	-	-	-	-
Evergreen School	Yes	Yes	-	-	-	-	-
Forest Lawn High School	Yes	Yes	-	-	-	-	-
Glenbrook School	Yes	Yes	-	-	-	-	-
Henry Wise Wood High School	Yes	Yes	-	-	-	-	-
Hillhurst School	Yes	Yes	-	-	-	-	-
John Ware School	Yes	Yes	-	-	-	-	-
Lord Beaverbrook High School	Yes	Yes	-	-	-	-	-
Mayland Heights School	Yes	Yes	-	-	-	-	-
McKenzie Highlands School	Yes	Yes	-	-	-	-	-
Midsun School	Yes	Yes	-	-	-	-	-
Mount View School	Yes	Yes	-	-	-	-	-
Patrick Aislie School	Yes	Yes	-	-	-	-	-
Queen Elizabeth Jr/Sr High School	Yes	Yes	-	-	-	-	-
Radisson Park School	Yes	Yes	-	-	-	-	-
Ramsay School	Yes	Yes	-	-	-	-	-
Rideau Park School	Yes	Yes	-	-	-	-	-
Roland Michener School	Yes	Yes	-	-	-	-	-
Rosedale School	Yes	Yes	-	-	-	-	-
Rosemont School	Yes	Yes	-	-	-	-	-
Sherwood School	Yes	Yes	-	-	-	-	-
Sunalta School	Yes	Yes	-	-	-	-	-
Sunnyside School	Yes	Yes	-	-	-	-	-
Thornciffe School	Yes	Yes	-	-	-	-	-
West Dalhousie School	Yes	Yes	-	-	-	-	-
Wilma Hansen School	Yes	Yes	-	-	-	-	-
Kenneth D. Taylor School	Yes	No	Yes	-	-	-	-
Simon Fraser School	Yes	No	Yes	-	-	-	-
William D. Pratt School	Yes	No	Yes	-	-	-	-
Acadia School	Yes	No	No	No	Yes	-	-
Andrew Sibbald School	Yes	No	No	No	Yes	-	-
Arbour Lake School	Yes	No	No	No	Yes	-	-
Balmoral School	Yes	No	No	No	Yes	-	-
Barriff Trail School	Yes	No	No	No	Yes	-	-
Bartling and Best School	Yes	No	No	No	Yes	-	-
Belvedere Parkway School	Yes	No	No	No	Yes	-	-
Bowcroft School	Yes	No	No	No	Yes	-	-
Brentwood School	Yes	No	No	No	Yes	-	-
Bridlewood School	Yes	No	No	No	Yes	-	-
Capitol Hill School	Yes	No	No	No	Yes	-	-
Captain John Pattiser School	Yes	No	No	No	Yes	-	-
Catherine Nichols Gunn School	Yes	No	No	No	Yes	-	-
Chaparral School	Yes	No	No	No	Yes	-	-
Chinook Park School	Yes	No	No	No	Yes	-	-
Chris Akkerman School	Yes	No	No	No	Yes	-	-
Colonel Sanders School	Yes	No	No	No	Yes	-	-
Connaught School	Yes	No	No	No	Yes	-	-
Dalhousie School	Yes	No	No	No	Yes	-	-
David Thompson School	Yes	No	No	No	Yes	-	-
Deer Run School	Yes	No	No	No	Yes	-	-
Douglasdale School	Yes	No	No	No	Yes	-	-
Dr. J. K. Mulloy School	Yes	No	No	No	Yes	-	-
Dr. Roberta Bondar School	Yes	No	No	No	Yes	-	-
Edgemont School	Yes	No	No	No	Yes	-	-
Ebiyo School	Yes	No	No	No	Yes	-	-
Fairview School	Yes	No	No	No	Yes	-	-
Fish Creek School	Yes	No	No	No	Yes	-	-
Glamorgan School	Yes	No	No	No	Yes	-	-
Hawkwood School	Yes	No	No	No	Yes	-	-
Highwood School	Yes	No	No	No	Yes	-	-
Jack James High School	Yes	No	No	No	Yes	-	-
Janet Johnstone School	Yes	No	No	No	Yes	-	-
Keefer School	Yes	No	No	No	Yes	-	-
Killarney School	Yes	No	No	No	Yes	-	-
King George School	Yes	No	No	No	Yes	-	-
Lake Bonavista School	Yes	No	No	No	Yes	-	-
Le Roi Daniels School	Yes	No	No	No	Yes	-	-
Louis Riel School	Yes	No	No	No	Yes	-	-
Marion Carson School	Yes	No	No	No	Yes	-	-
McKenzie Lake School	Yes	No	No	No	Yes	-	-
New Brighton School	Yes	No	No	No	Yes	-	-
Nickle School	Yes	No	No	No	Yes	-	-
Queen Elizabeth School	Yes	No	No	No	Yes	-	-
R.T. Alderman School	Yes	No	No	No	Yes	-	-
Richmond School	Yes	No	No	No	Yes	-	-
Riverside School	Yes	No	No	No	Yes	-	-
Ron Southern School	Yes	No	No	No	Yes	-	-
Royal Oak School	Yes	No	No	No	Yes	-	-
Samuel W. Shaw School	Yes	No	No	No	Yes	-	-
Scenic Acres School	Yes	No	No	No	Yes	-	-
Senator Patrick Burns School	Yes	No	No	No	Yes	-	-
Simons Valley School	Yes	No	No	No	Yes	-	-
Sir Winston Churchill High School	Yes	No	No	No	Yes	-	-
Sundance School	Yes	No	No	No	Yes	-	-
Tuscany School	Yes	No	No	No	Yes	-	-
Valley View School	Yes	No	No	No	Yes	-	-
Varsity Acres School	Yes	No	No	No	Yes	-	-
Western Canada High School	Yes	No	No	No	Yes	-	-
Wildwood School	Yes	No	No	No	Yes	-	-
William Reid School	Yes	No	No	No	Yes	-	-
Woodbine School	Yes	No	No	No	Yes	-	-

School Name	Is school over or projected to be over 90% utilization in next 3 years?	Is accommodation challenge due to out of boundary students?	Does school accommodate students from a community that is approved for a new school?	Is the school a starter school?	Is there a school in an adjacent community that can accommodate students in the long term?	Can the school site accommodate additional modular classrooms?	Does the school meet all the filters to proceed to the ranking process for modular classrooms?
Altadore School	Yes	No	No	No	No	No	-
Auburn Bay School	Yes	No	No	No	No	No	-
Bayside School	Yes	No	No	No	No	No	-
Bishop Pinkham School	Yes	No	No	No	No	No	-
Bob Edwards School	Yes	No	No	No	No	No	-
Citadel Park School	Yes	No	No	No	No	No	-
Clarence Sansom School	Yes	No	No	No	No	No	-
Colonel J. Fred Scott School	Yes	No	No	No	No	No	-
Copperfield School	Yes	No	No	No	No	No	-
Cranston School	Yes	No	No	No	No	No	-
Crossing Park School	Yes	No	No	No	No	No	-
Douglas Harkness School	Yes	No	No	No	No	No	-
Dr. Freda Miller School	Yes	No	No	No	No	No	-
Dr. George Stanley School	Yes	No	No	No	No	No	-
Dr. Gordon Higgins School	Yes	No	No	No	No	No	-
Dr. Martha Cohen School	Yes	No	No	No	No	No	-
Ernest Morrow School	Yes	No	No	No	No	No	-
F.E. Osborne School	Yes	No	No	No	No	No	-
Falconridge School	Yes	No	No	No	No	No	-
Glendale School	Yes	No	No	No	No	No	-
Griffith Woods School	Yes	No	No	No	No	No	-
H.D. Cartwright School	Yes	No	No	No	No	No	-
Hidden Valley School	Yes	No	No	No	No	No	-
Hugh A. Bennett School	Yes	No	No	No	No	No	-
James Fowler High School	Yes	No	No	No	No	No	-
Lakeshore School	Yes	No	No	No	No	No	-
North Haven School	Yes	No	No	No	No	No	-
Northern Lights School	Yes	No	No	No	No	No	-
Pineridge School	Yes	No	No	No	No	No	-
Ranchlands School	Yes	No	No	No	No	No	-
Robert Thirk High School	Yes	No	No	No	No	No	-
Rundle School	Yes	No	No	No	No	No	-
Sir John A. Macdonald School	Yes	No	No	No	No	No	-
Taradale School	Yes	No	No	No	No	No	-
Ted Harrison School	Yes	No	No	No	No	No	-
Tom Baines School	Yes	No	No	No	No	No	-
Valley Creek School	Yes	No	No	No	No	No	-
West Ridge School	Yes	No	No	No	No	No	-
West Springs School	Yes	No	No	No	No	No	-
Alternative High School	Yes	No	No	No	No	Yes	Yes
Annie Foote School	Yes	No	No	No	No	Yes	Yes
Annie Gale School	Yes	No	No	No	No	Yes	Yes
Buffalo Rubbing Stone School	Yes	No	No	No	No	Yes	Yes
Cambrian Heights School	Yes	No	No	No	No	Yes	Yes
Captain Nicholas Goddard School	Yes	No	No	No	No	Yes	Yes
Centennial High School	Yes	No	No	No	No	Yes	Yes
Chief Justice Milvain School	Yes	No	No	No	No	Yes	Yes
Colonel Irvine School	Yes	No	No	No	No	Yes	Yes
Colonel Macleod School	Yes	No	No	No	No	Yes	Yes
Coventry Hills School	Yes	No	No	No	No	Yes	Yes
Dr. E. P. Scarlett High School	Yes	No	No	No	No	Yes	Yes
Ernest Manning High School	Yes	No	No	No	No	Yes	Yes
Georges P. Vanier School	Yes	No	No	No	No	Yes	Yes
Grant MacEwan School	Yes	No	No	No	No	Yes	Yes
Guy Weadick School	Yes	No	No	No	No	Yes	Yes
Ian Bazalgette School	Yes	No	No	No	No	Yes	Yes
Jennie Elliott School	Yes	No	No	No	No	Yes	Yes
Joane Cardinal-Schubert High School	Yes	No	No	No	No	Yes	Yes
John G. Diefenbaker High School	Yes	No	No	No	No	Yes	Yes
Lester B. Pearson High School	Yes	No	No	No	No	Yes	Yes
Mahogany School	Yes	No	No	No	No	Yes	Yes
Mannmeet Singh Bhullar School	Yes	No	No	No	No	Yes	Yes
Marlborough School	Yes	No	No	No	No	Yes	Yes
Monterey Park School	Yes	No	No	No	No	Yes	Yes
Mount Royal School	Yes	No	No	No	No	Yes	Yes
Nelson Mandela High School	Yes	No	No	No	No	Yes	Yes
North Trail High School	Yes	No	No	No	No	Yes	Yes
Nose Creek School	Yes	No	No	No	No	Yes	Yes
O. S. Geiger School	Yes	No	No	No	No	Yes	Yes
Panorama Hills School	Yes	No	No	No	No	Yes	Yes
Peter Loughheed School	Yes	No	No	No	No	Yes	Yes
Prairie Sky School	Yes	No	No	No	No	Yes	Yes
Prince Of Wales School	Yes	No	No	No	No	Yes	Yes
Saddle Ridge School	Yes	No	No	No	No	Yes	Yes
Sibylla Kiddle School	Yes	No	No	No	No	Yes	Yes
Silver Springs School	Yes	No	No	No	No	Yes	Yes
Sir Wilfrid Laurier School	Yes	No	No	No	No	Yes	Yes
Stanley Jones School	Yes	No	No	No	No	Yes	Yes
Terry Fox School	Yes	No	No	No	No	Yes	Yes
Thomas B. Riley School	Yes	No	No	No	No	Yes	Yes
Vincent Massey School	Yes	No	No	No	No	Yes	Yes

Attachment IV: Modular Classroom Points Assignment 2024

SCHOOL	PROGRAM	CATEGORY A Enrolment / Projection / Utilization	CATEGORY B Site Features / Location	CATEGORY C Cost Compared to Average	TOTAL
John G. Diefenbaker High School	Regular and IB	40	12	25	77
Dr. E. P. Scarlett High School	Regular and French Immersion	40	10	20	70
Cambrian Heights School	Regular	50	9	5	64
Mount Royal School	Regular	50	7	5	62
Saddle Ridge School	Regular	45	9	5	59
Terry Fox School	Regular	40	7	5	52
Lester B. Pearson High School	Regular and IB	15	10	25	50
Centennial High School	Regular	25	14	5	44
Annie Foote School	Regular	30	7	5	42
O. S. Geiger School	Regular	30	6	5	41
Vincent Massey School	Regular	25	9	5	39
Ernest Manning High School	Regular	15	10	10	35
Colonel Macleod School	Regular and Traditional Learning Centre	15	12	5	32
Georges P. Vanier School	Regular and French Immersion	20	7	5	32
Panorama Hills School	Regular	15	7	5	27
Manmeet Singh Bhullar School	Regular	10	6	5	21
Sibylla Kiddle School	Regular	5	8	5	18
Annie Gale School	Regular and Traditional Learning Centre	5	7	5	17

Attachment V: Modular Classrooms Recommended for New Units 2024

School Name	Area	Planning Sector	Opening Day 2024 Utilization	Overflow Status	Utilization w/o Overflow	Projected Utilization w/o Overflow (2026)	Overflowed To:	# of Units Requested	# of Student Spaces	New Utilization w/o Overflow	New Utilization w/o Overflow (Projected 2026)	Points Ranking	% above Avg. Cost	Playfields Impacted?	Site Revisions
John G. Diefenbaker High School	Area 2	N	105%		105%	131%		6	150	95%	118%	77	7%	No	New Sub Data Closet
Dr. E. P. Scarlett High School	Area 6	S	124%		124%	132%		6	150	113%	120%	70	12%	No	New Sub Data Closet , New Garbage Enclosure.
Mount Royal School	Area 7	C	102%	Overflowed	139%	204%	A.E. Cross School Vincent Massey School	2	50	125%	184%	62	92%	Yes	New Sub Data Closet, Parking Expansion, Washroom Expansion, removal of Soccer fields, Barrer Free Revisions on site.
Saddle Ridge School	Area 4	NE	106%	Overflowed	115%	137%	Hugh A. Bennett School Pineridge School	2	50	106%	126%	59	92%	No	New Sub Data Closet, Parking Expansion, Washroom Expansion, Tree Replacement, Regrading, Relocation of Storm Line.
Terry Fox School	Area 4	NE	94%	Overflowed	103%	133%	Ian Bazalgette School	6	150	85%	110%	52	55%	No	New Fire Hydrant, New Fire Lane, New Sub Data Closet, Parking Expansion, Washroom Expansion, New Garbage Enclosure.
Centennial High School ^a	Area 5	S	129%	Receiver	129%	119%		6	150	118%	109%	44	44%	No	New Sub Data Closet, Tree Replacement, below grade crawl spaces required.
Lester B. Pearson High School	Area 4	NE	116%		116%	110%		6	150	106%	100%	50	9%	Yes	New sub Data Closet, Tree Replacement
Georges P. Vanier School*	Area 2	C	98%		98%	112%		2	50	91%	104%	32	102%	No	New Sub Data Closet, Parking expansion, Washroom Expansion, New Garbage Enclosure, Regrading.
Annie Foote School	Area 4	NE	93%	Receiver	93%	121%		2	50	84%	110%	42	69%	No	Parking Expansion, New Garbage Enclosure, New Fire Wall.
O. S. Geiger School	Area 4	NE	112%	Receiver	112%	123%		4	100	93%	103%	41	48%	No	New Fire Lane, New Sub Data Closet, Parking Expansion, Washroom Expansion, relocate sports field.
Vincent Massey School	Area 7	W	100%	Receiver	100%	116%		4	100	91%	105%	39	38%	Yes, Play area	New Sub Data Closet, Parking Expansion, New Garbage Enclosure, Regrading.
Ernest Manning High School	Area 7	W	116%		116%	109%		6	150	107%	100%	35	27%	No	New Sub Data Closet , Regrading, specialty foundations.
Colonel Macleod School	Area 3	C	104%		104%	109%		2	50	97%	101%	32	148%	Yes, Play area	New Fire Wall, Parking Expansion, Washroom Expansion, New Garbage Enclosure.
Panorama Hills School	Area 2	N	96%		96%	106%		2	50	88%	97%	27	131%	No	Parking Expansion, Washroom Expansion, Regrading, Specialty Foundations.
Manmeet Singh Bhullar School	Area 4	NE	104%		104%	104%		4	100	88%	87%	21	52%	Yes, Play area	New Fire Lane, New Sub Data Closet, Parking Expansion, Washroom Expansion.
Sibylla Kiddle School	Area 5	SE	105%	Receiver	105%	99%		2	50	97%	91%	18	31%	No	New Sub Data Closet, Washroom Expansion, Connection Corridor, Regrading.
Annie Gale School	Area 4	NE	104%		104%	97%		2	50	96%	90%	17	161%	No	Parking Expansion, New Fire Hydrant, New Fire Lane, New Sub Data Closet, Washroom Expansion, New Garbage Enclosure, Tree Replacement.

^a Note: Centennial High School has been ranking above Lester B Pearson due to its very high utilization rate and lack of viable overflow options in south Calgary.

* Note: The official capacity measurement of G.P. Vanier is different from the actual capacity of the building as is expected to change to a lower value in 2025. The actual utilization rate based on current building use in 2024 is 107% and in 2026 is projected to be 121%. Applying this utilization rate results in an overall points ranking of 42 and as such G.P. Vanier has been placed higher on the prioritization table.

Attachment VI: Modular Classrooms Excluded from Modular Unit Additions 2024

School Name	Area	Planning Sector	Reason for Not Submitting
Alternative High School	Area 6	C	Enrolment can be managed as students in this program could be supported through community schools in the CBE.
Buffalo Rubbing Stone School	Area 2	N	Previously approved for modular classrooms.
Cambrian Heights School	Area 2	C	Opening Day utilization did not exceed 100%. There was lower than anticipated enrolment from the home area and Evanston overflow. Removing from scope for this year.
Captain Nichola Goddard School	Area 2	N	Site review by Facility Projects determined this school will not be able to receive additional modulars classrooms.
Chief Justice Milvain School	Area 4	NE	Low Category A points based on utilization. Did not meet threshold for further analysis.
Colonel Irvine School	Area 2	C	Previously approved for modular classrooms.
Coventry Hills School	Area 3	N	Low Category A points based on utilization. Declining enrolment past 2026.
Grant MacEwan School	Area 4	NE	Previously approved for modular classrooms.
Guy Weadick School	Area 4	NE	Site review by Facility Projects determined this school will not be able to receive additional modulars classrooms.
Ian Bazalgette School	Area 3	E	Previously approved for modular classrooms.
Jennie Elliott School	Area 7	W	Low Category A points based on utilization. Did not meet threshold for further analysis.
Joane Cardinal-Schubert High School	Area 5	SE	Previously approved for modular classrooms.
Mahogany School	Area 5	SE	Previously approved for modular classrooms.
Marlborough School	Area 4	NE	Low Category A points based on utilization. Did not meet threshold for further analysis.
Monterey Park School	Area 4	NE	Opening Day utilization did not exceed 100%. Removing from scope for this year.
Nelson Mandela High School	Area 4	NE	Previously approved for modular classrooms.
North Trail High School	Area 3	N	Previously approved for modular classrooms.
Nose Creek School	Area 3	N	Site review by Facility Projects determined this school will not be able to receive additional modulars classrooms.
Peter Loughheed School	Area 4	NE	Previously approved for modular classrooms.
Prairie Sky School	Area 4	NE	Previously approved for modular classrooms.
Prince Of Wales School	Area 5	S	Low Category A points based on utilization. Did not meet threshold for further analysis.
Silver Springs School	Area 1	NW	Low Category A points based on utilization. Did not meet threshold for further analysis.
Sir Wilfrid Laurier School	Area 4	E	Low Category A points based on utilization. Did not meet threshold for further analysis.
Stanley Jones School	Area 3	C	Opening Day utilization did not exceed 100%. Removing from scope for this year.
Thomas B. Riley School	Area 1	NW	Low Category A points based on utilization. Did not meet threshold for further analysis.