



Ernest Manning Re-Designation Parent Meeting

Interim Decision for Accommodation
Parent Meetings
November 25 and 26, 2019



Calgary Board
of Education

Introductions



- Lisa Davis, Trustee Wards 6 & 7
- Joanne Pitman, Superintendent, School Improvement
- Dany Breton, Superintendent, Facilities & Environmental Services
- Dr. Lori Cooper, Education Director, Area 7
- David Dyck, Education Director, Area 7
- Darlene Unruh, Education Director, Area 6
- Carrie Edwards, Director, Property, Planning & Transportation

Agenda



- Purpose of Meeting
- Principles of Participation
- Background Information
- How the decision was made
- Impact of changes
- Central Memorial Presentation
- Question and answers

What is this meeting about?



- Share interim decision for accommodation plan prior to completion of the high school engagement process

What this meeting is not about?



- The long term decision that will be reached through the high school engagement



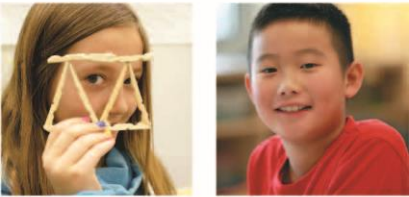
Principles of Participation



- Respect above all else
- Staff and participants will feel safe
- Speak one at a time
- We balance airtime fairly

Session will run until 8:00. If these principles are not followed, the session will close earlier.

CBE Planning Principles



- Minimize disruptions for students
- Provide program continuity from Kindergarten to Grade 12
- Keep cohort groups of students together
- Allow students to attend school as close to home as possible
- Provide long term sustainability
- Use space and resources effectively
- Provide equitable access for all students to quality learning environments and choice of programs

AR 1090 Student Accommodation Planning Process

Background



- Ernest Manning High School opened in September 2011.
- The new school replaced the old school which was located where the Westbrook LRT station is located.
- CBE was able to keep the existing attendance area for Ernest Manning when it opened in the new location.
- Enrolment has been increasing since 2011

Year	Total Enrolment	Percentage Increase
2011	1302	-
2012	1449	11%
2013	1671	15%
2014	1708	2%
2015	1729	1%
2016	1783	3%
2017	1792	1%
2018	1879	5%
2019	1996	6%

Background



- School Capacity = 1676
- The occupancy rate of the school = 2288

Ernest Manning

ERNEST MANNING HIGH

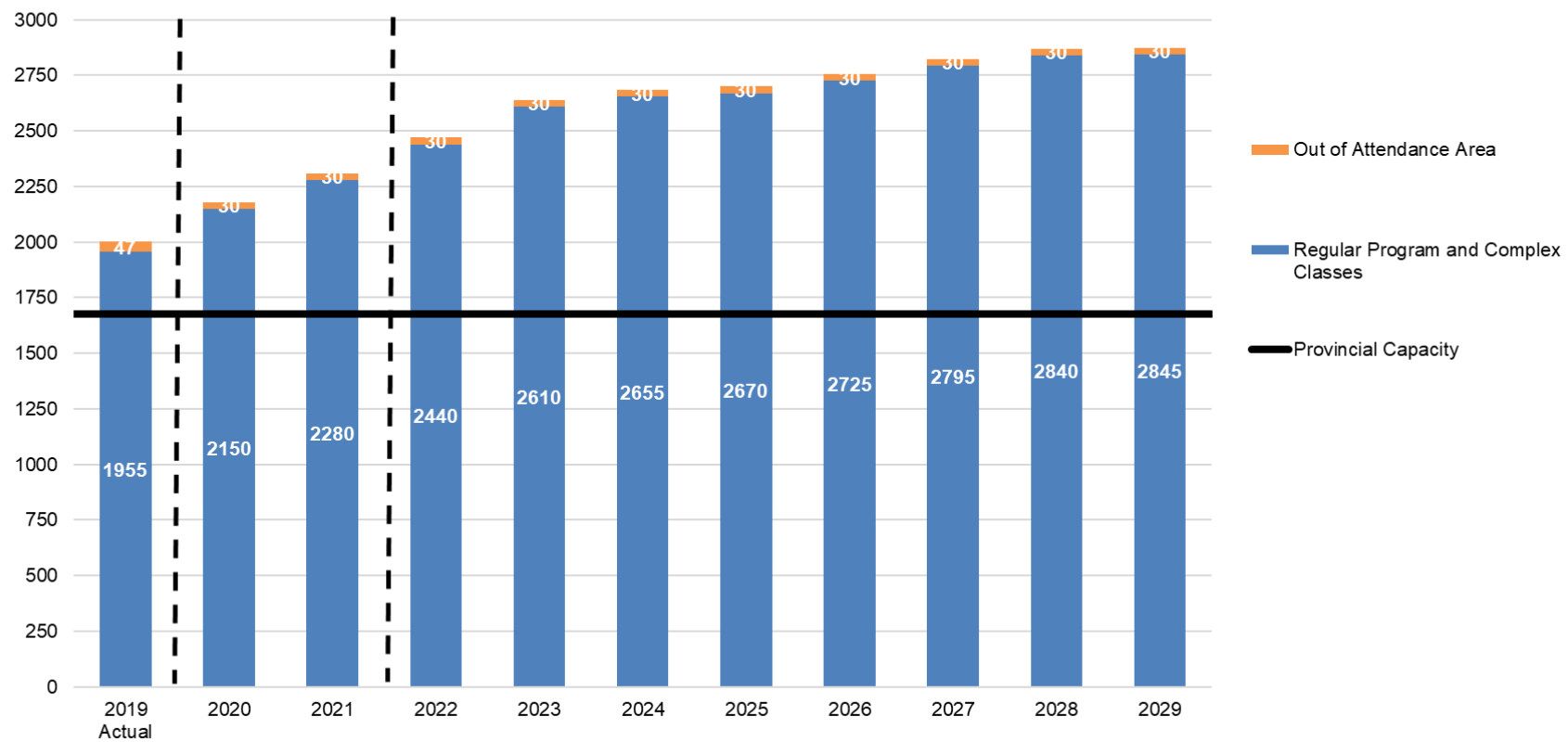
Provincial Capacity = 1676

Enrolment on September 30, 2019

	GR10	GR11	GR12	TOTAL
Regular	663	676	601	1,940
Out of Attendance Area	4	10	26	40
System Classes (Paced Learning Program)	9	4	3	16
Total	676	690	630	1,996

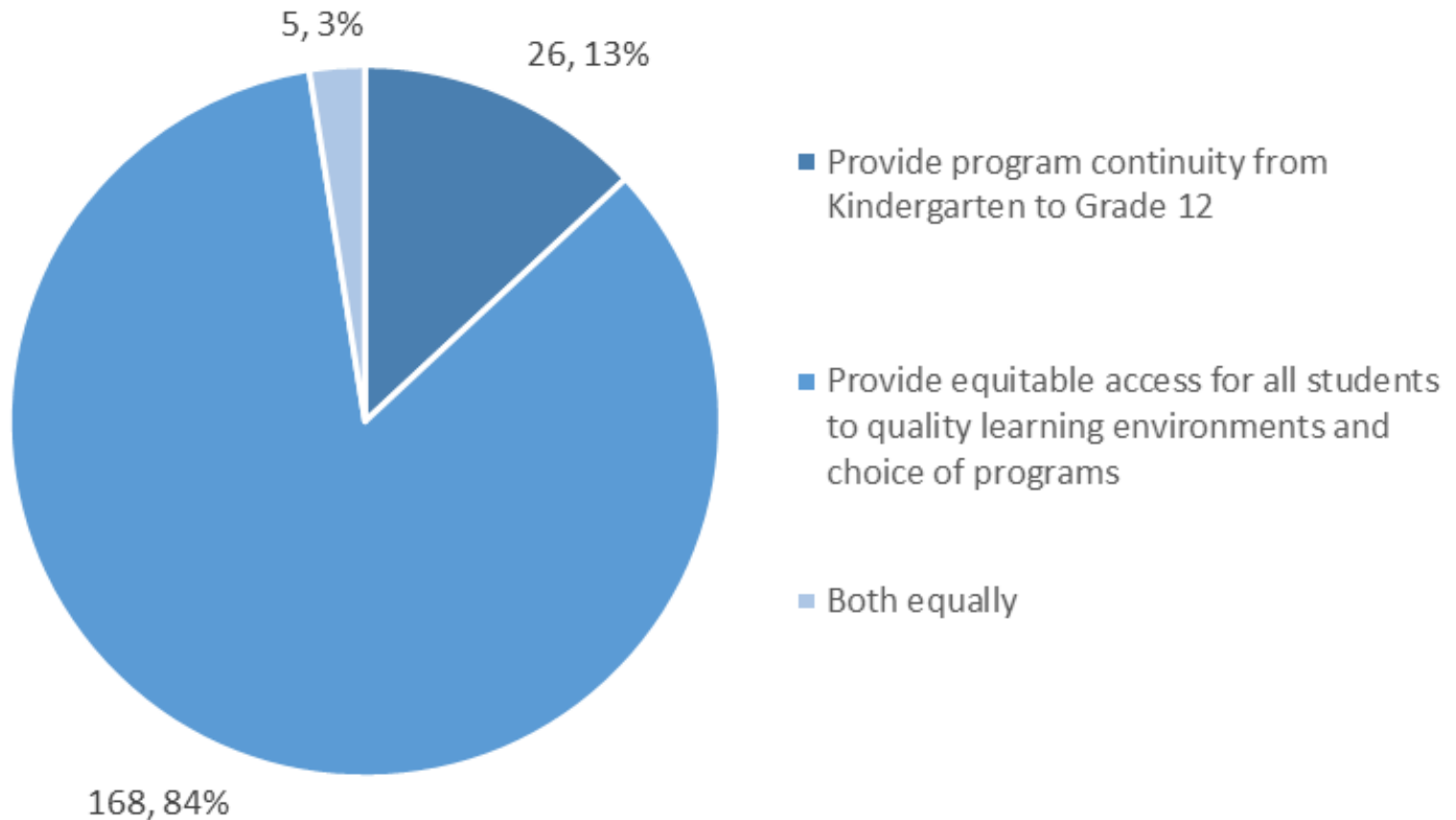
Ernest Manning – Status Quo 10 Year Projection

Ernest Manning High School - 10 Year Projection
10-12 Regular Program



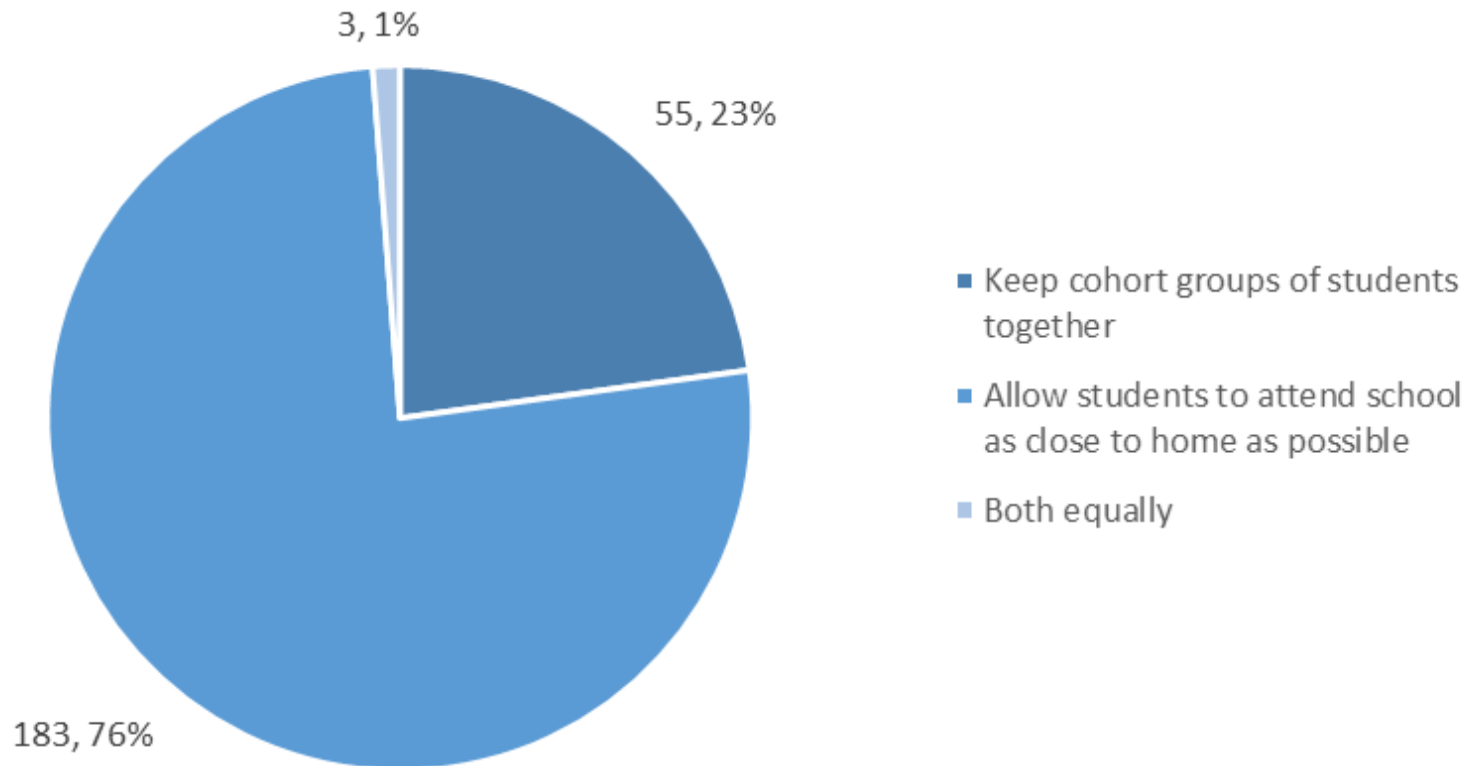
Feedback from High School Engagement In person Sessions Ernest Manning Group

Of the two CBE planning principles listed below, place a dot on the one you feel is most important.



Feedback from High School Engagement In person Sessions Ernest Manning Group

Of the two CBE planning principles listed below, place a dot on the one your feel is most important.

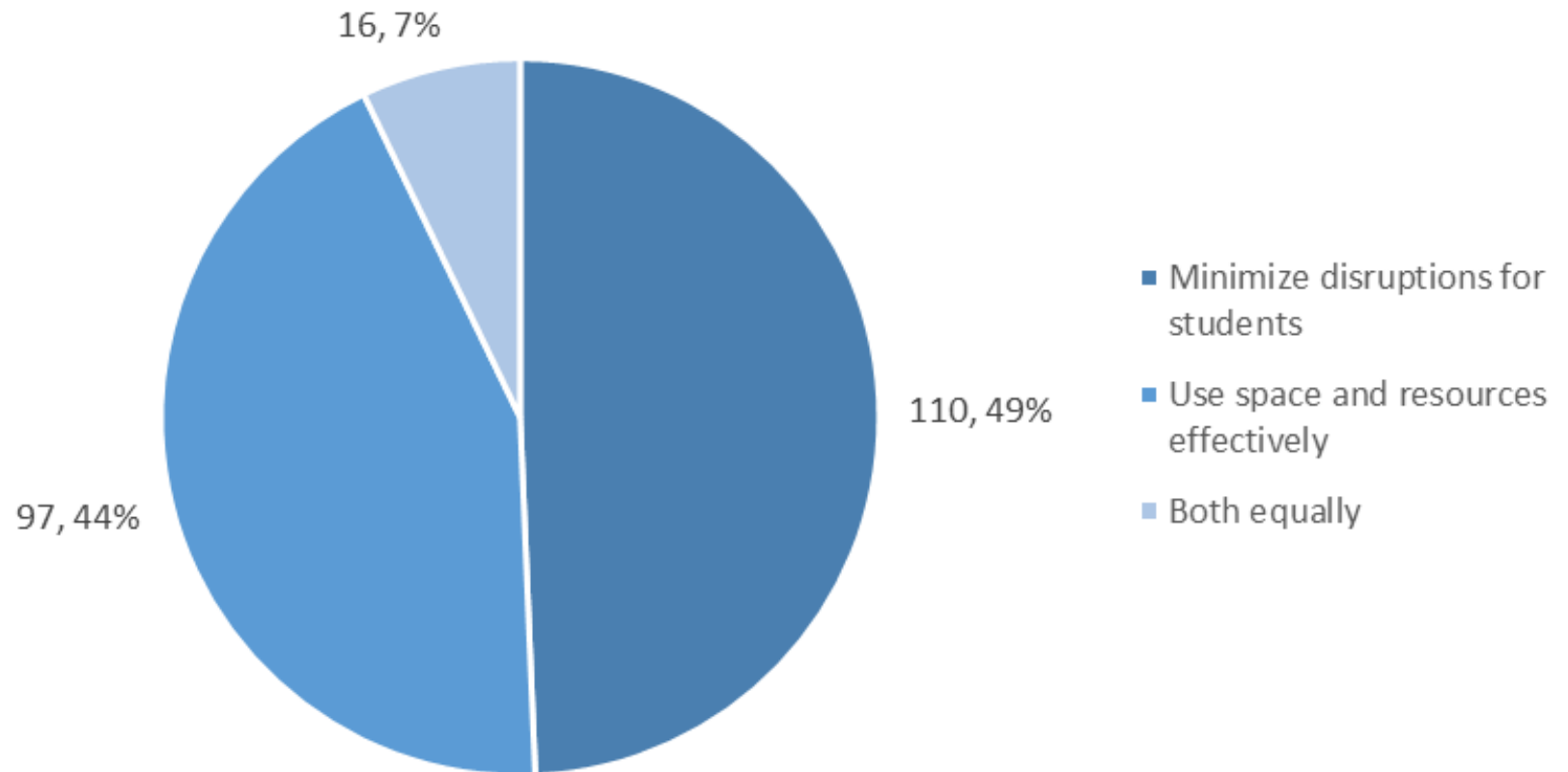


Distance to Ernest Manning

Community	Closest Distance	Farthest Distance
Signal Hill	41m	4,023m
Springbank Hill	72m	4,520m
Aspen Woods	343m	3,837m
Christie Park	472m	2,123m
Strathcona Park	1,149m	3,102m
West Springs	2,357m	5,410m
Coach Hill	2,398m	3,592m
Patterson	2,715m	5,195m
Discovery Ridge	2,766m	5,602m
Cougar Ridge	3,735m	6,331m

Feedback from High School Engagement In person Sessions Ernest Manning Group

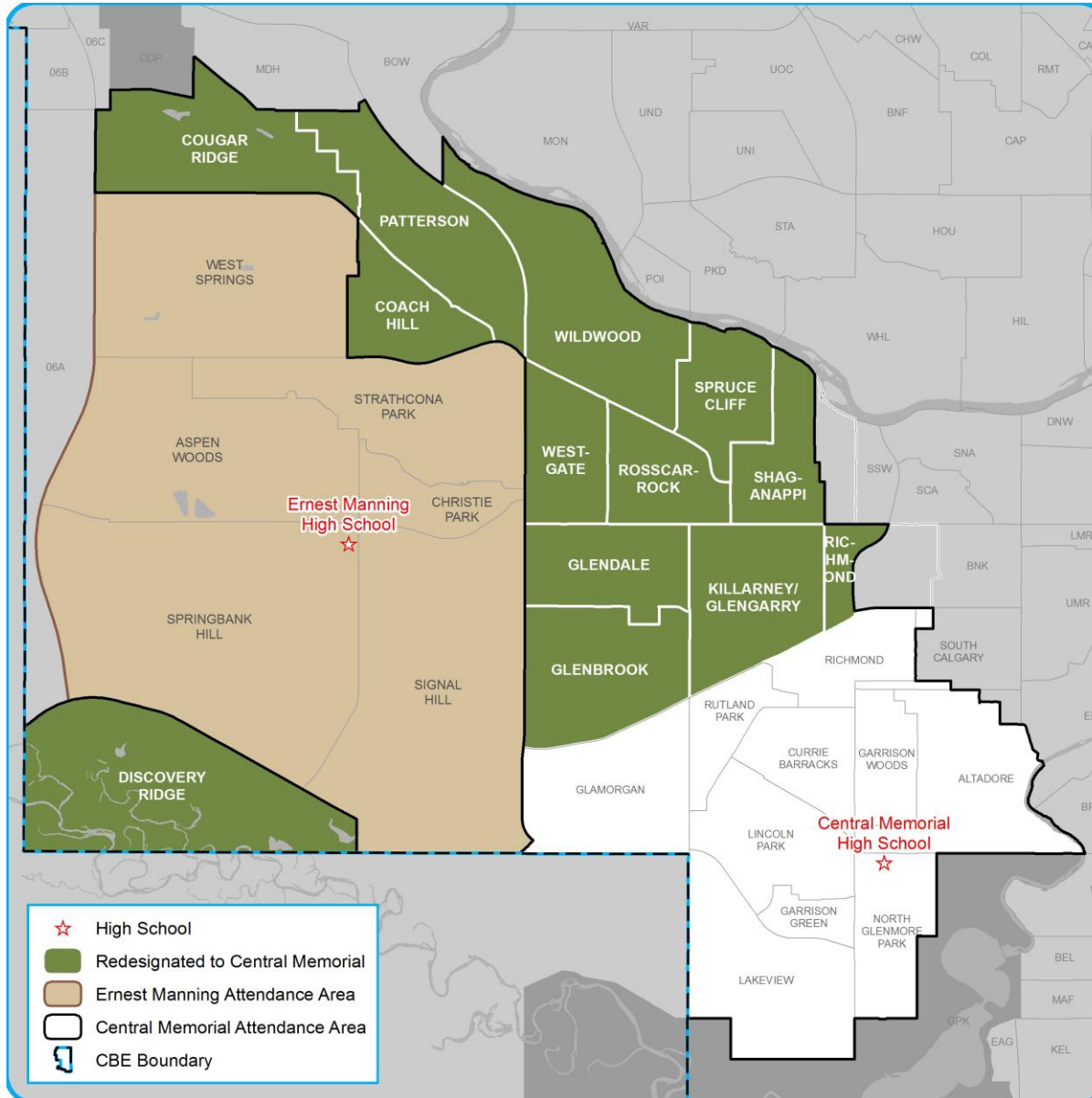
Of the two CBE planning principles listed below, place a dot on the one your feel is most important.



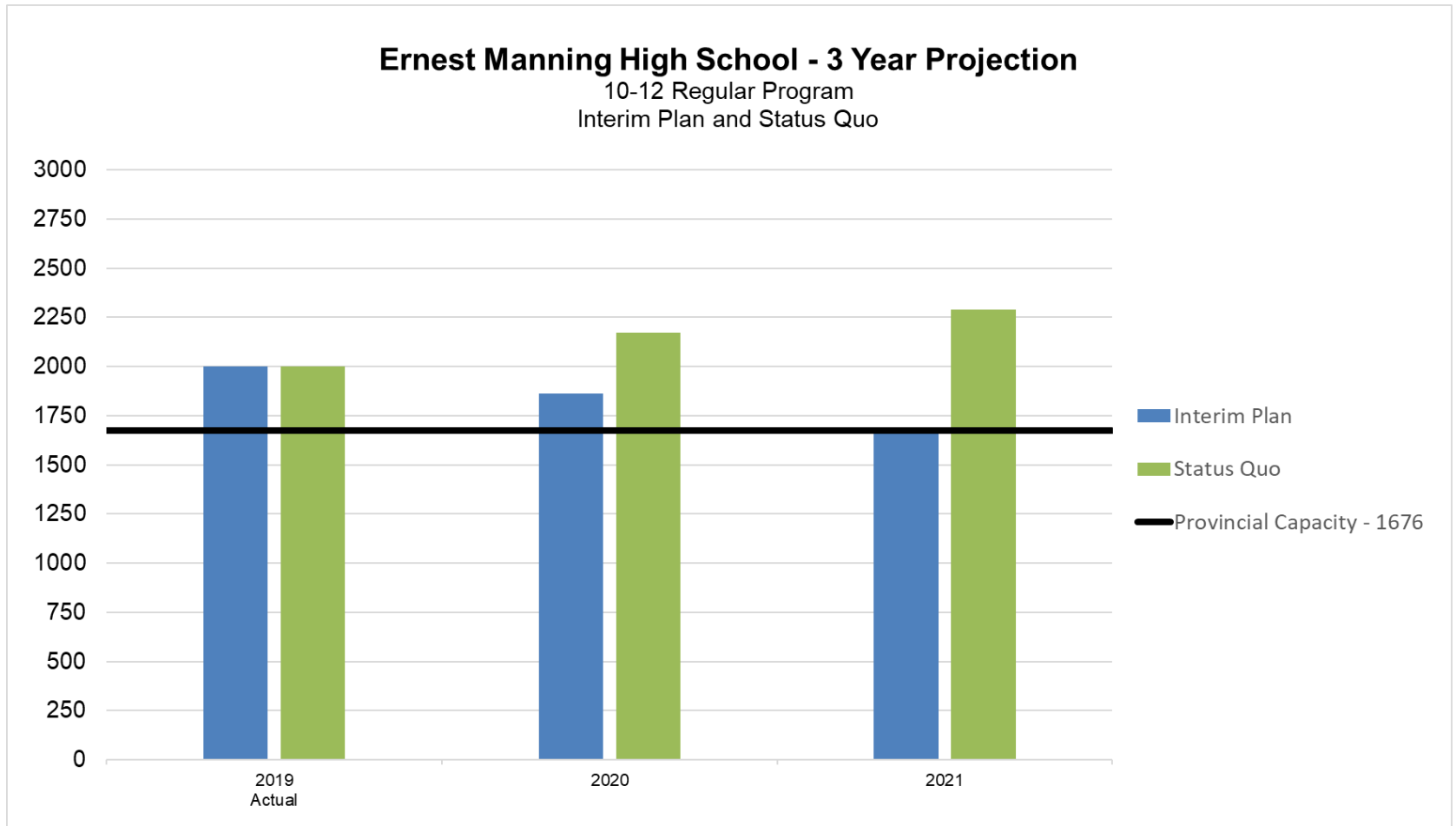
Feedback from High School Engagement In person Sessions Ernest Manning Group (Top comments)

3. When you think about the in-scope factors relevant to this school, record the interim/short term possibility or possibilities that should be considered prior to October 2021 and why.	
Response	Agreement
Give priority to students coming from a CBE program as opposed to the Catholic school system or private school as these students chose an alternative school board and have more options than people who are not in catholic/private	18
Keep travel distance to a minimum if considering bound changes and natural boundaries (Sarcee)	10
Give CBE students priority over those coming from private schools or the Catholic school system	7
Communicate any boundary changes prior to Sept 2021 to allow families to plan for potential changes	7
You can't wait until 2022 to fix a problem at EMHS that you created in 2014. Fix it NOW.	7
Make it attractive to send kids to underutilized schools by offering regular programming with guaranteed smaller class sizes	5
Give regular and AP programs priority over alternative programs	5

Map



Ernest Manning– 2YR Projection



	2019	2020	2021
Status Quo	1996	2170	2290
Interim Plan	1996	1860	1680

Ernest Manning– 2YR Projection

Ernest Manning Current and Projected Enrolment				
Year	GR10	GR11	GR12	Total
2019	676	690	630	1996
2020	450	680	730	1860
2021	505	460	715	1680

New boundaries are reflected in the projections for 2020 and 2021.

Projected Grade 10 Enrolment by Community (September 2020)

Communities That Remain Designated to Ernest Manning			
Community	GR 10 Potential (# of Grade 9 Students)*	GR10 Intake Rate	Projected GR10 Enrolment
Aspen Woods	46	145%	67
Christie Park	9	150%	14
Signal Hill	40	140%	56
Springbank Hill	70	140%	98
Strathcona Park	44	125%	55
West Springs	104	150%	156
Paced Learning Program			6
Total	313		452
<i>*# of Grade 9 students from the community attending a regular program</i>			

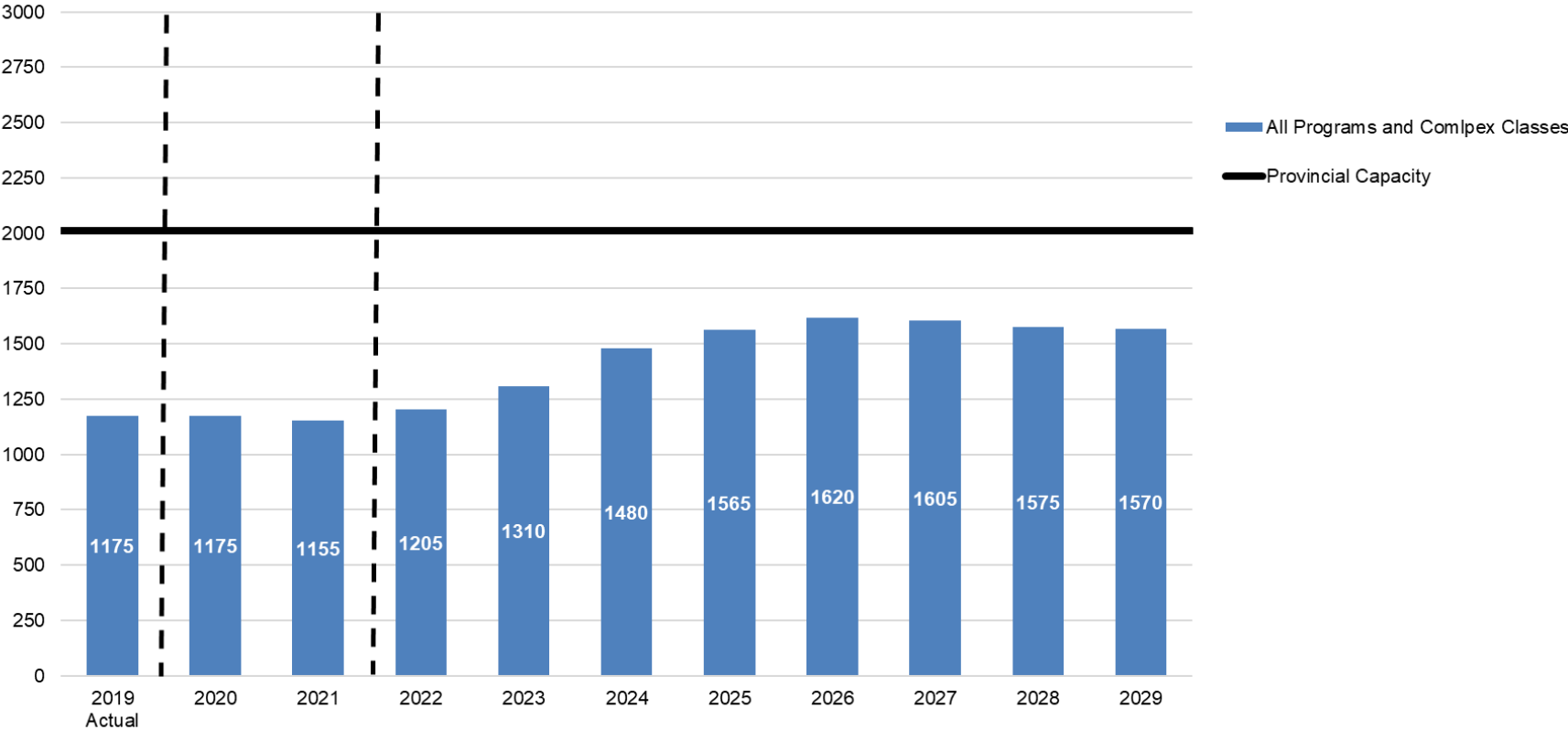
Projected Grade 10 Enrolment by Community (September 2020)

Communities Re-Designated to Central Memorial			
Community	GR 10 Potential (# of Grade 9 Students)*	GR10 Intake Rate	Projected GR10 Enrolment
Communities East of Sarcee Trail			
Glenbrook	42	85%	36
Glendale	14	109%	15
Killarney/Glengarry	36	98%	35
Richmond	7	33%	2
Rosscarrock	22	90%	20
Shaganappi	7	90%	6
Spruce Cliff	18	85%	15
Westgate	14	100%	14
Wildwood	9	120%	11
Sub-Total	169		154
Communities West of Sarcee Trail			
Coach Hill	10	95%	10
Cougar Ridge	51	130%	66
Patterson	18	111%	20
Discovery Ridge	37	153%	56
Sub-Total	116		152
Total	285		306

*# of Grade 9 students from the community attending a regular program

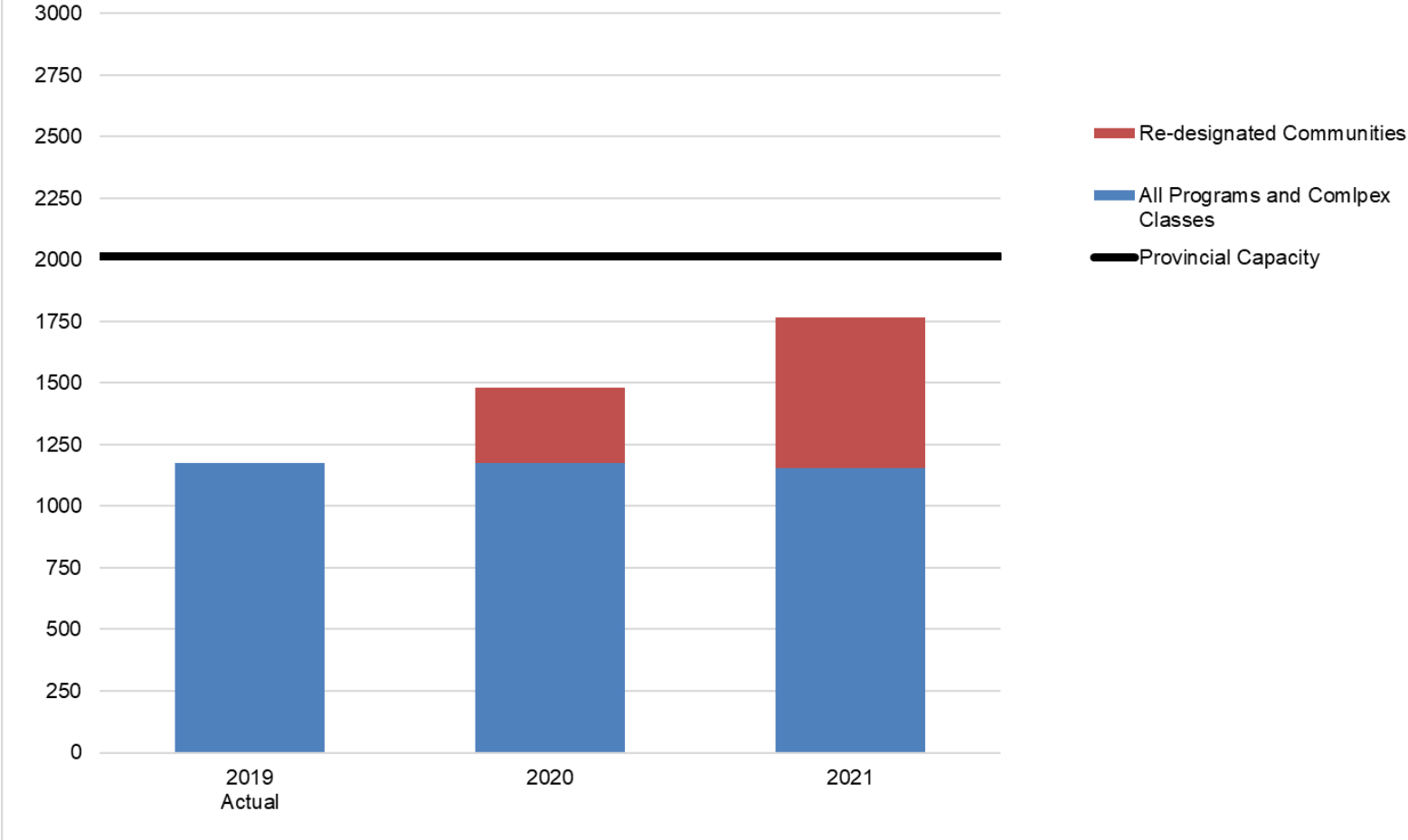
Central Memorial– Status Quo 10 Year Projection

Central Memorial High School - 10 Year Projection - Status Quo
10-12 Regular Program



Central Memorial with Re-designation

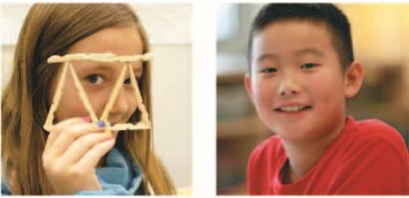
Central Memorial High School - 10 Year Projection - Interim Accommodation Plan
10-12 Regular Program



Central Memorial High School



How Will This Change be Implemented?



- Who is designated to Central Memorial?
 - 2020-2021
 - Grade 10 students and any new students in GR11 and GR12 who move into the re-designated communities
 - 2021-2020
 - Grade 10 and Grade 11 students and any new GR12 students who move into the re-designated communities

Note: Any student currently attending Ernest Manning and living in one of the re-designated communities is able to transfer to Central Memorial if they choose

- Who can continue to attend Ernest Manning?
 - Siblings of students currently attending Ernest Manning who live in the re-designated communities where the sibling will be attending concurrently

Why was my community chosen to be re-designated?



- The CBE needed to find an appropriate number of students to re-designate to alleviate overcrowding at Ernest Manning School.
- We accounted for proximity, current feeder school patterns as well as total number of students being re-designated.

Why are we allowing students from non-designated feeder schools to attend?



- Under the Alberta Education Act, Section 4 (1) A student is a resident of the board in which the student's parent resides.
- If both parents are Catholic, they are deemed residents of the Catholic Board. If only one parent is Catholic, parents can chose either the Separate or Public System.
- Parents declare their support of either Separate or Public board.
- In reality, Parents have the opportunity to register their child at either board. Separate board requires baptismal certificates and we require proof of address.
- Both boards can allow either Catholic or Public students if they have the space and resources to support them
- Public system can not discriminate on religion.

Why is there no time for public engagement on this matter?



- The engagement sessions involving Ernest Manning School had extra content involving possible interim plans with a focus on what CBE needs to consider when developing or implementing a short term plan.

Can I transfer my child to Bowness or another CBE high School ?



- Our high school transfer process is still the same and a student may apply for a transfer for a specific program (grades 10-12) not offered at their designated school
- All transfers will be based on space and resources at the available school.

Could a lottery system be used in this matter, especially for Catholic and Charter students?



- While a lottery process would result in a similar outcome to the interim plan, the outcome of the lottery process provides less certainty for families
- Making distinctions within attendance area resident students based on prior choice opens the CBE up to legal challenges and is inconsistent with the Act.

How will student transportation be impacted by these changes? Why is the cost of dedicated busing not possible?



- Decisions about dedicated bus routes are made by Calgary Transit who must also consider their resources. We will work collaboratively with them about increased ridership from communities affected.

Questions?



- Speak one at a time
- Please raise your hand for the microphone
- Presentation will be posted online

learning | as unique | as every student



**Calgary Board
of Education**