



French Immersion & Spanish Bilingual Programs at Westgate School

Revised Scenarios for Your Consideration
February 12-28, 2013

learning | **as unique** | as every student



**Calgary Board
of Education**

Engagement Process

Parent Meeting	December 3, 2012
THOUGHTstream	December 4-January 3, 2013
Open House	January 9, 2013
Administrative Meeting	January 28, 2013
Parent Meeting	February 27, 2013
THOUGHTstream	February 12-28, 2013
Administrative Decision	March 2013

Revised Scenarios

- ☐ Based on feedback and parent priorities
- ☐ Guided by CBE Accommodation Principles and Alberta Education Values
- ☐ Reviewed by Senior Administration

What we heard from parents

- ☐ Keep the two programs together
- ☐ Move regular programs to make room
- ☐ Consider splitting the programs
- ☐ Keep both programs together in younger grades
- ☐ Abolish kindergarten at Westgate
- ☐ Open a new location
- ☐ Allow room for growth
- ☐ Use charter school (currently not available)
- ☐ K-6, 7-9 learning continuum

CBE Guiding Principals

There are several principles that are used when looking at student accommodation.

- ☐ Minimize disruptions for students
- ☐ Program continuity from Kindergarten to grade 12
- ☐ Keep cohort groups of students together
- ☐ Students attend school as close to home as possible
- ☐ Long term sustainability
- ☐ Effective use of space and resources
- ☐ Equitable access for all students to quality learning environments and choice of programs

Alberta Education Values

Opportunity – learners are exposed to rich learning experiences that enable them to discover their passions and achieve their highest potential.

Fairness – learners have access to the programs, support services, and instructional excellence needed to achieve the desired outcomes.

Citizenship – learners have pride in their community and culture. They have a sense of belonging and work to improve both the community and the world.

Choice – learners have a choice of both programs and methods of learning.

Diversity – learners' differing needs, cultures, and abilities are respected and valued within inclusive learning environments.

Excellence – learners, teachers, and governors achieve high standards.



3 Scenarios still under consideration by CBE

learning | as unique | as every student



Calgary Board
of Education

Feedback

As you review these scenarios please keep this question in mind:

☐ *If this is the scenario selected, what are the anticipated impacts of this change?*

Assumptions for all 3 scenarios

- ❑ No scenario is possible that meets the desired K-6, 7-9 learning continuum that parents asked for that would not involve closing a regular program and moving the students long distances.
- ❑ All 3 scenarios involve a K-4, 5-9 grade configuration
- ❑ All 3 scenarios involve splitting the programs at grade 5
 - Spanish Bilingual can only be accommodated at A.E. Cross and assumes the eventual relocation of the Area IV office in the future.
 - French Immersion has a late entry point at Grade 7 and can only be accommodated at Bishop Pinkham.

Assumptions for all 3 scenarios

Effective September 2013 in all three scenarios:

- ❑ Grade 5 students in both programs would be designated to Bishop Pinkham (French Immersion) and A.E. Cross (Spanish)
 - Current Grade 4 and 5 students at Westgate would move September 2013 to either Bishop Pinkham or A.E. Cross.
 - Current Spanish Bilingual students in Grade 6 and 7 at Bishop Pinkham would move to A.E. Cross for Sept 2013.

Scenario A (1 and 2)

- ☐ **K-4 both programs at Westgate**
- ☐ **Gr 5-9 French Immersion at Bishop Pinkham**
- ☐ **Gr 5-9 Spanish Bilingual at A.E. Cross**

What would this scenario mean?

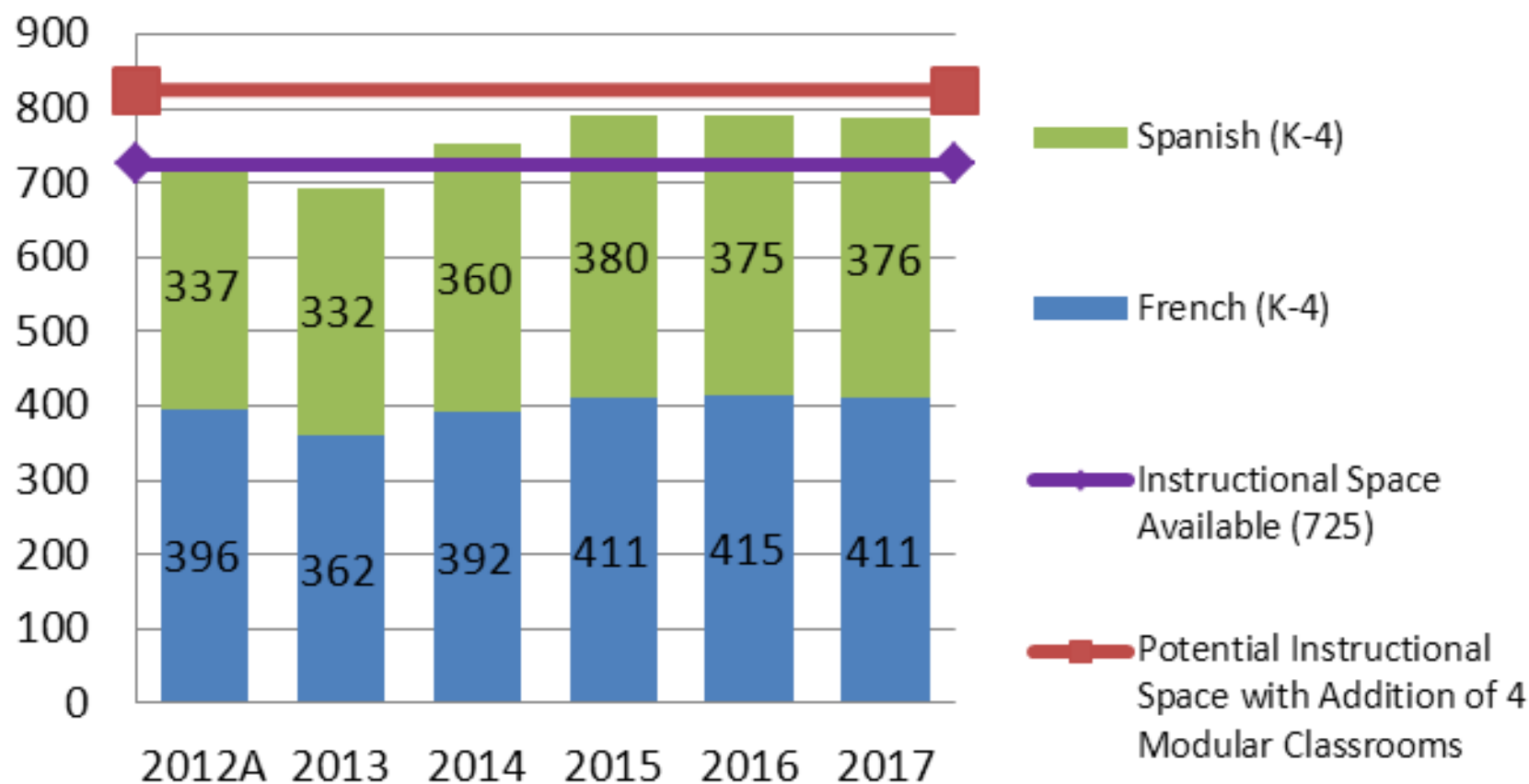
- ❑ Keeps the programs together at Westgate K-4
- ❑ Grade 5 students in both programs would be designated to Bishop Pinkham (French Immersion) and A.E. Cross (Spanish) for September 2013.
 - Current Grade 4 and 5 students at Westgate would move September 2013.
 - Current Spanish Bilingual students in Grade 6 and 7 at Bishop Pinkham would move to A.E. Cross for Sept 2013.
- ❑ Allows time to see if Provincial funding and approval can be obtained for placement of 4 modular classrooms at Westgate (Scenario A-1) or
 - If funding is not received for modular classrooms we would look at opening a second Spanish location at Jennie Elliott for 2014 (Scenario A-2).

Scenario A: How does this reflect parent feedback?

- ☐ Consider splitting the programs
- ☐ Keeps both programs together in younger grades

Westgate School - Scenario A-1

Add 4 Modular Classrooms in 2014

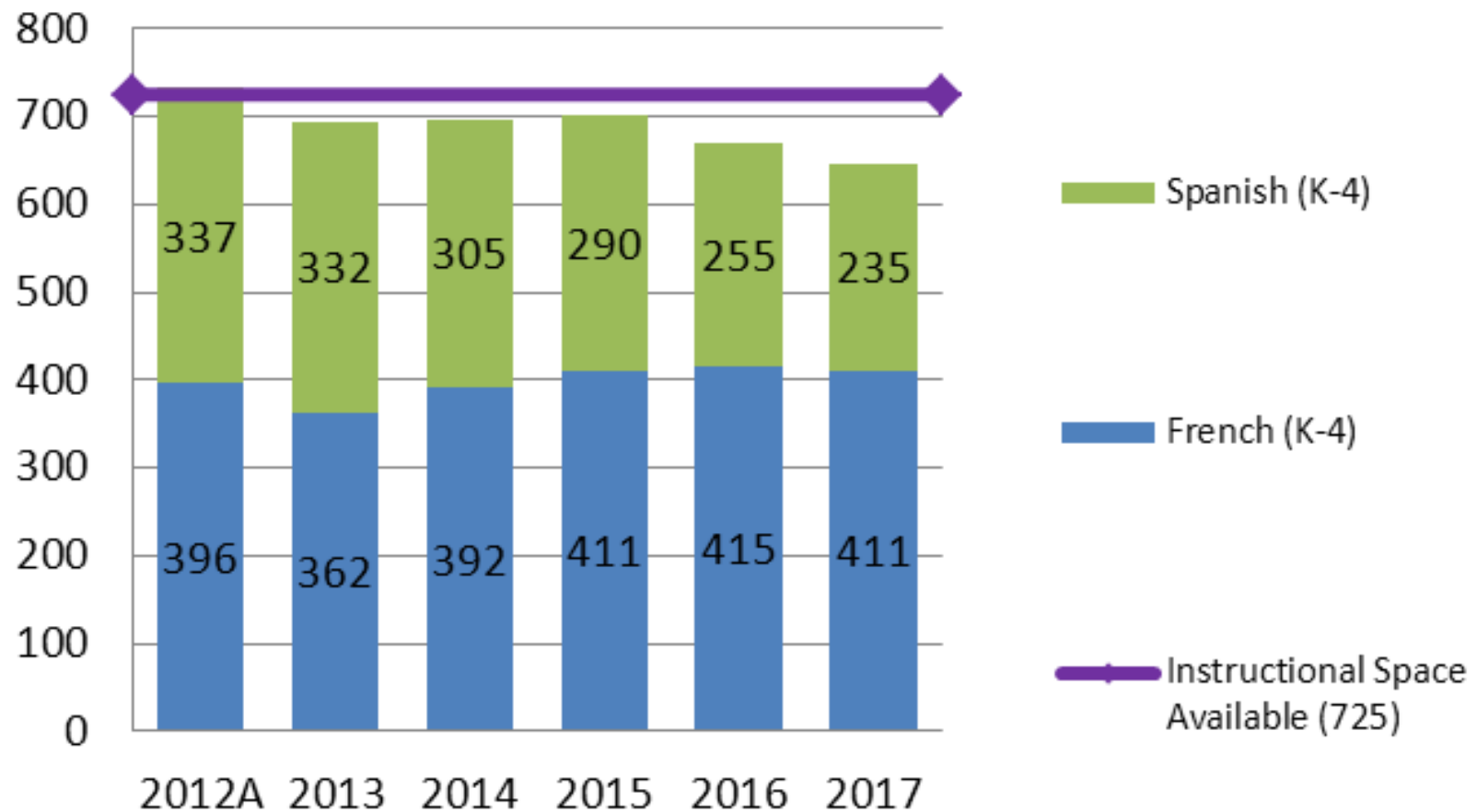


Note: Projections assume 4 modular classrooms are added to Westgate School for September 2014

SUBJECT TO REVIEW AND UPDATE

Westgate School - Scenario A-2

Open a 2nd Spanish Bilingual Site in 2014

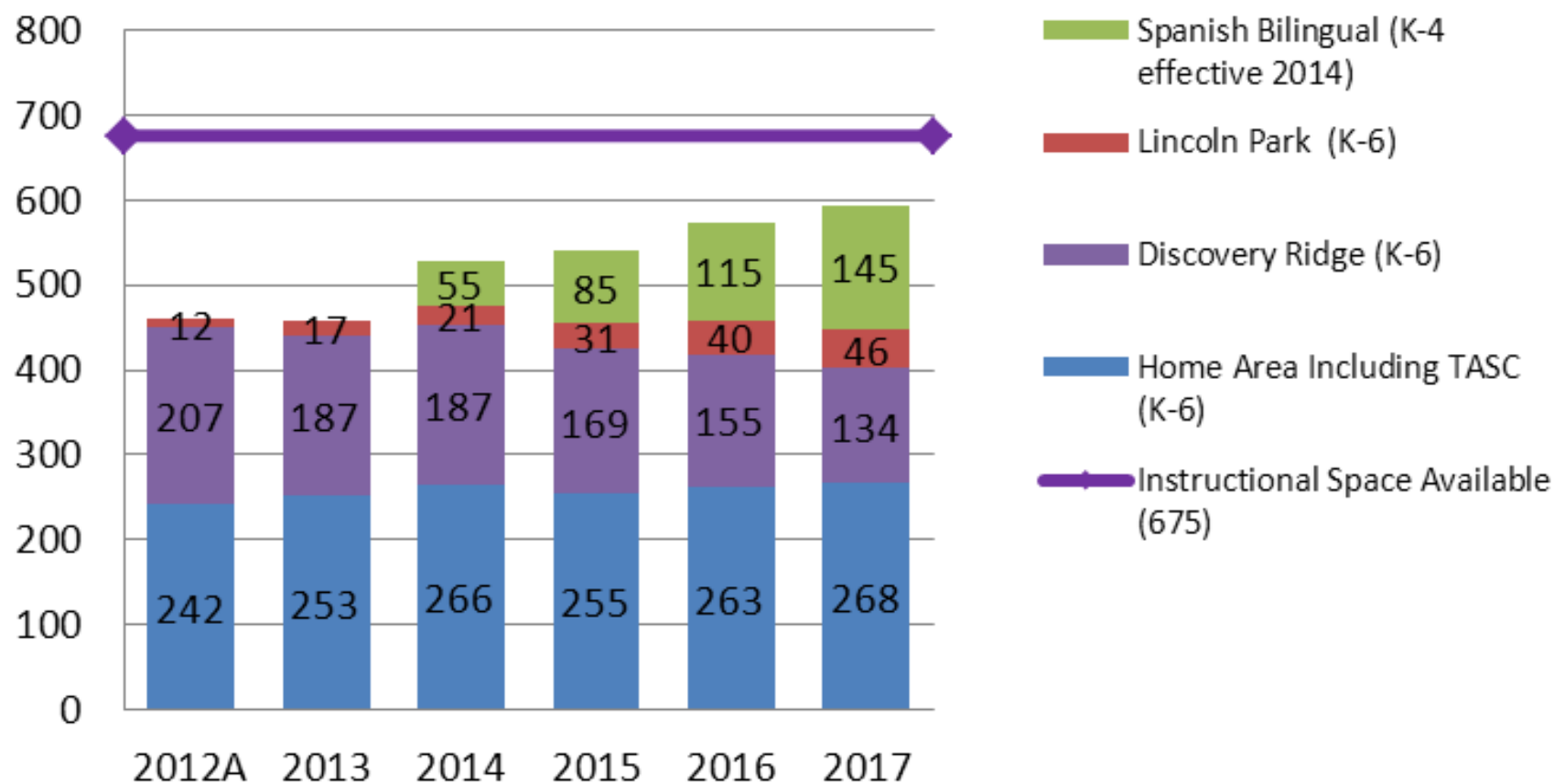


Note: Projections assume a 2nd Spanish Bilingual site opens for K-GR1 for September 2014

SUBJECT TO REVIEW AND UPDATE

Jennie Elliott School - Proposed Scenario A-2

Open a 2nd Spanish Bilingual Site in 2014

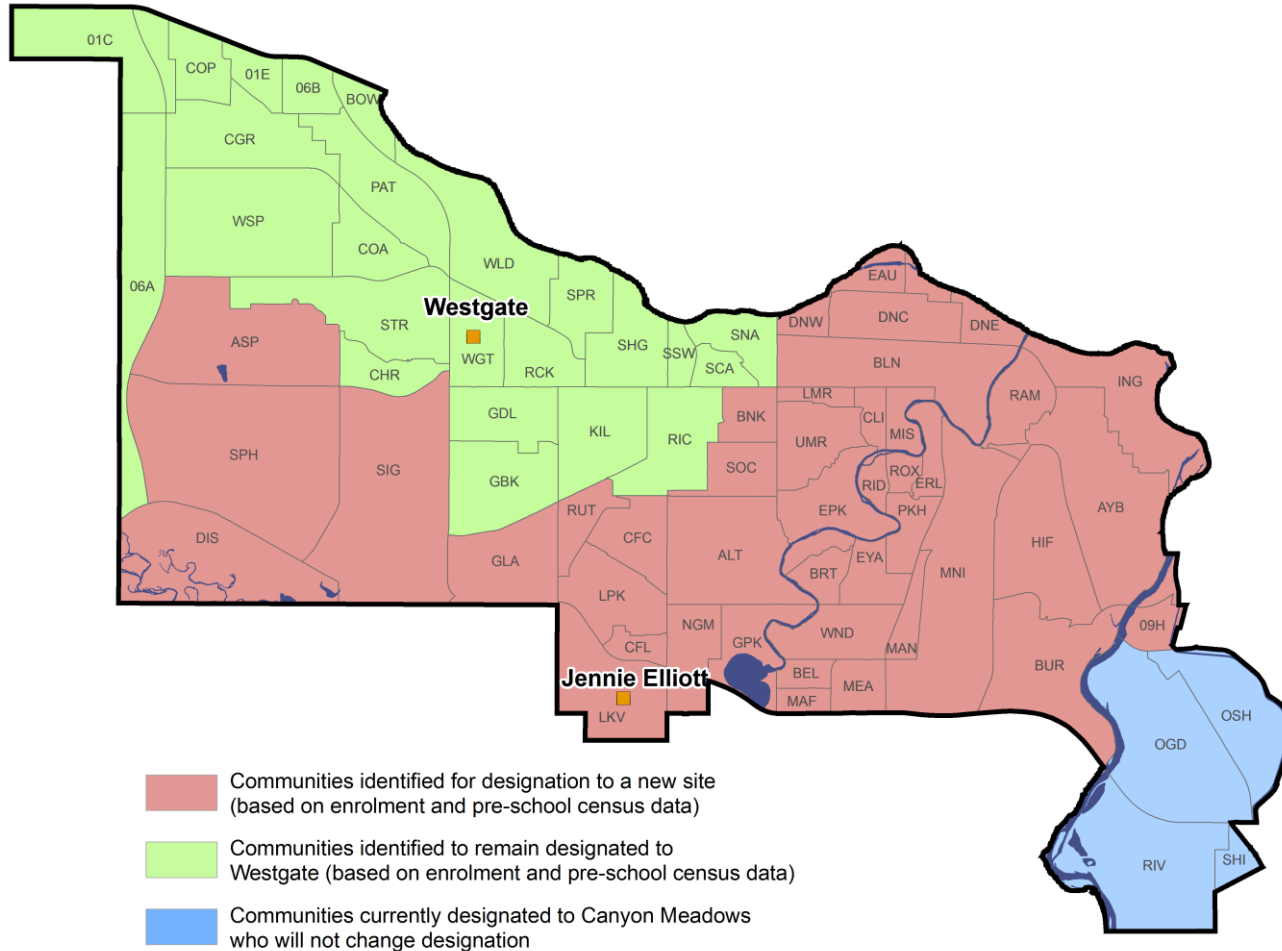


Notes:

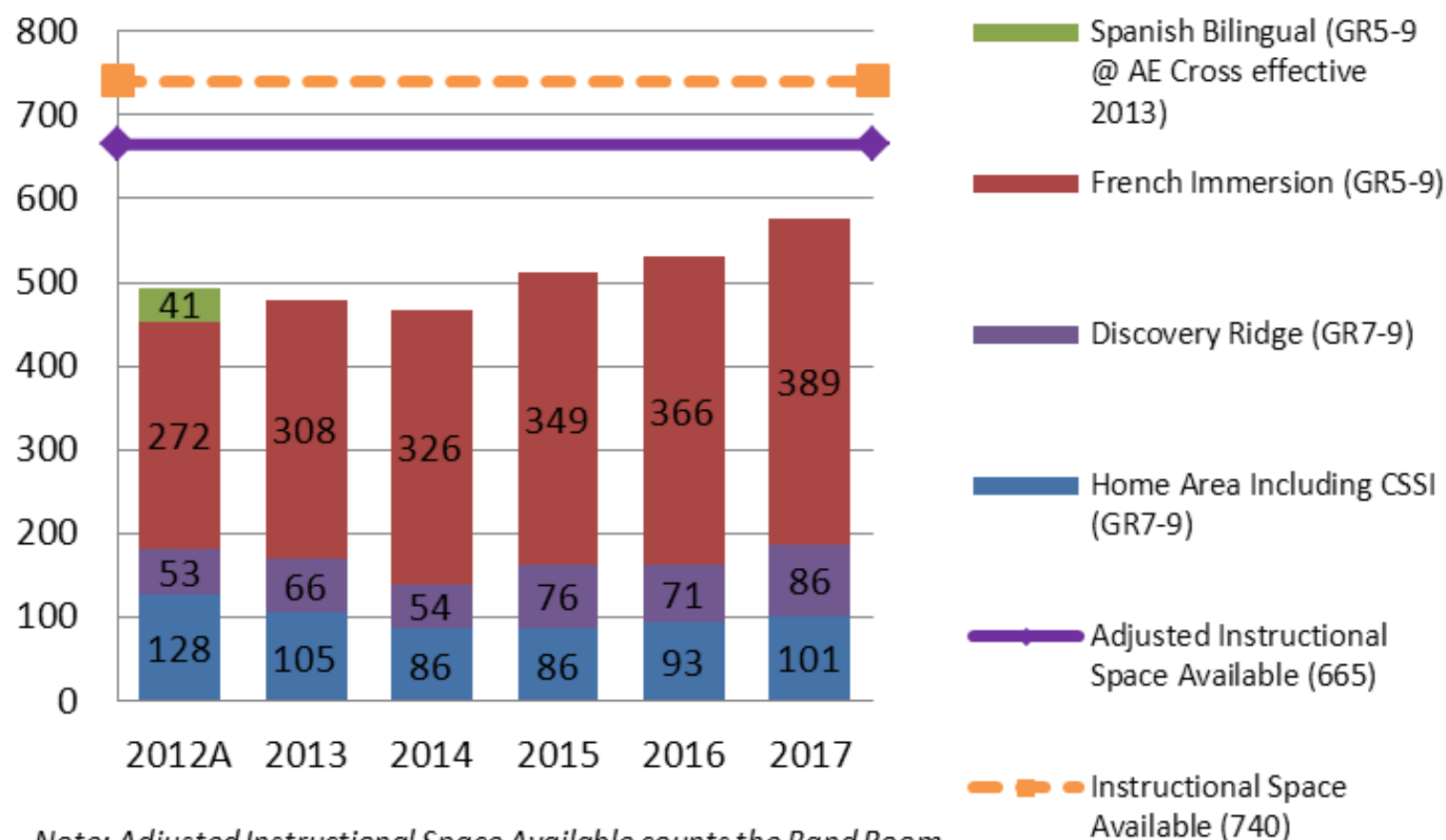
1. Projections assume a 2nd Spanish Bilingual site opens for K-GR1 for September 2014

SUBJECT TO REVIEW AND UPDATE

Proposed Boundary for 2nd Spanish Bilingual Program at Jennie Elliott School



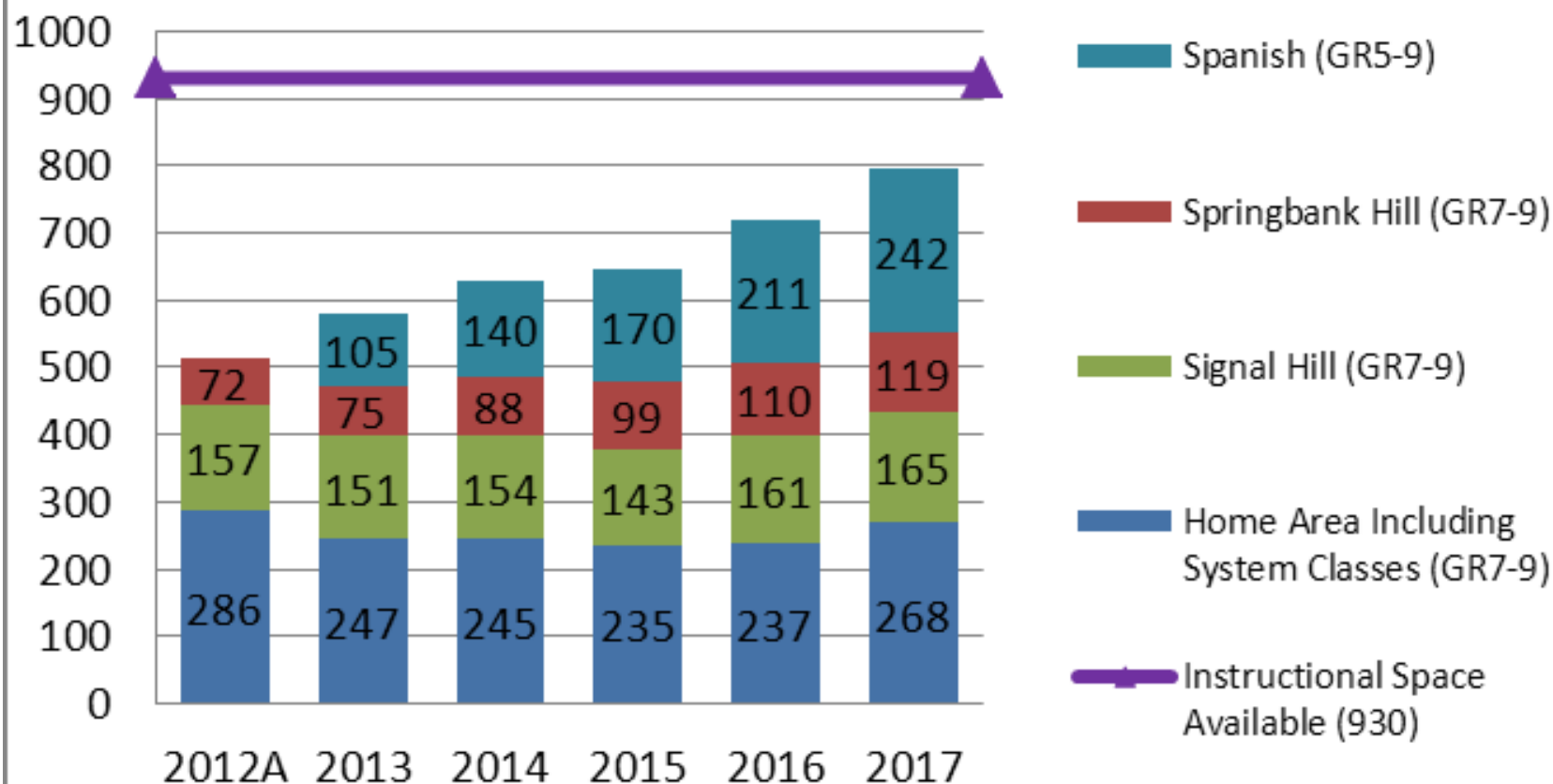
Bishop Pinkham School - Proposed Scenario A, B and C 2012-2017



Note: Adjusted Instructional Space Available counts the Band Room and the Lunch Room as one teaching space each

SUBJECT TO REVIEW AND UPDATE

A. E. Cross School - Proposed Scenario A, B and C 2012-2017



Note: Instructional Space Available includes the 6 classrooms currently used by the Area Office

SUBJECT TO REVIEW AND UPDATE

Feedback Scenario A

Summary of Feedback Received via THOUGHTstream, YourVoice & Email

- Still have space, resource allocation and safety concerns
- No change for our family.
- The uncertainty remains as to whether there will be 4 modular classrooms added or a second Spanish Bilingual school opened
- Any school bigger than 400 students is not healthy
- There is absolutely no choice left for gr 5 - 9 Spanish
- AE Cross is a good choice for us
- Allows for time to keep the program at one school
- No harm in taking a little time to find a permanent solution
- I do not like the idea of portables at Westgate, there is not enough room in the school itself to add another 100 students
- I think scenario A is the most logical
- A.E. Cross has no history of experience with second language
- Need to consider before and after care when moving younger students
- Opening a second Spanish location at Jennie Elliott is a better, long-term solution
- School change from Gr. 5-9, this is the best for my family
- Grade 5 will need shielding from the older kids
- Current gr 6 and 7 Span should finish out their middle school
- New Boundaries for Jennie Elliott, students in North Glenmore Park, north of Glenmore Trail would no longer be designated to attend Jennie Elliott or Bishop Pinkham.

Scenario B

- ☐ **Kindergarten for both programs together at Rosscarrock**
- ☐ **Gr 1-4 both programs together at Westgate**
- ☐ **Gr 5-9 French Immersion at Bishop Pinkham**
- ☐ **Gr 5-9 Spanish Bilingual at A.E. Cross**

What would this scenario mean?

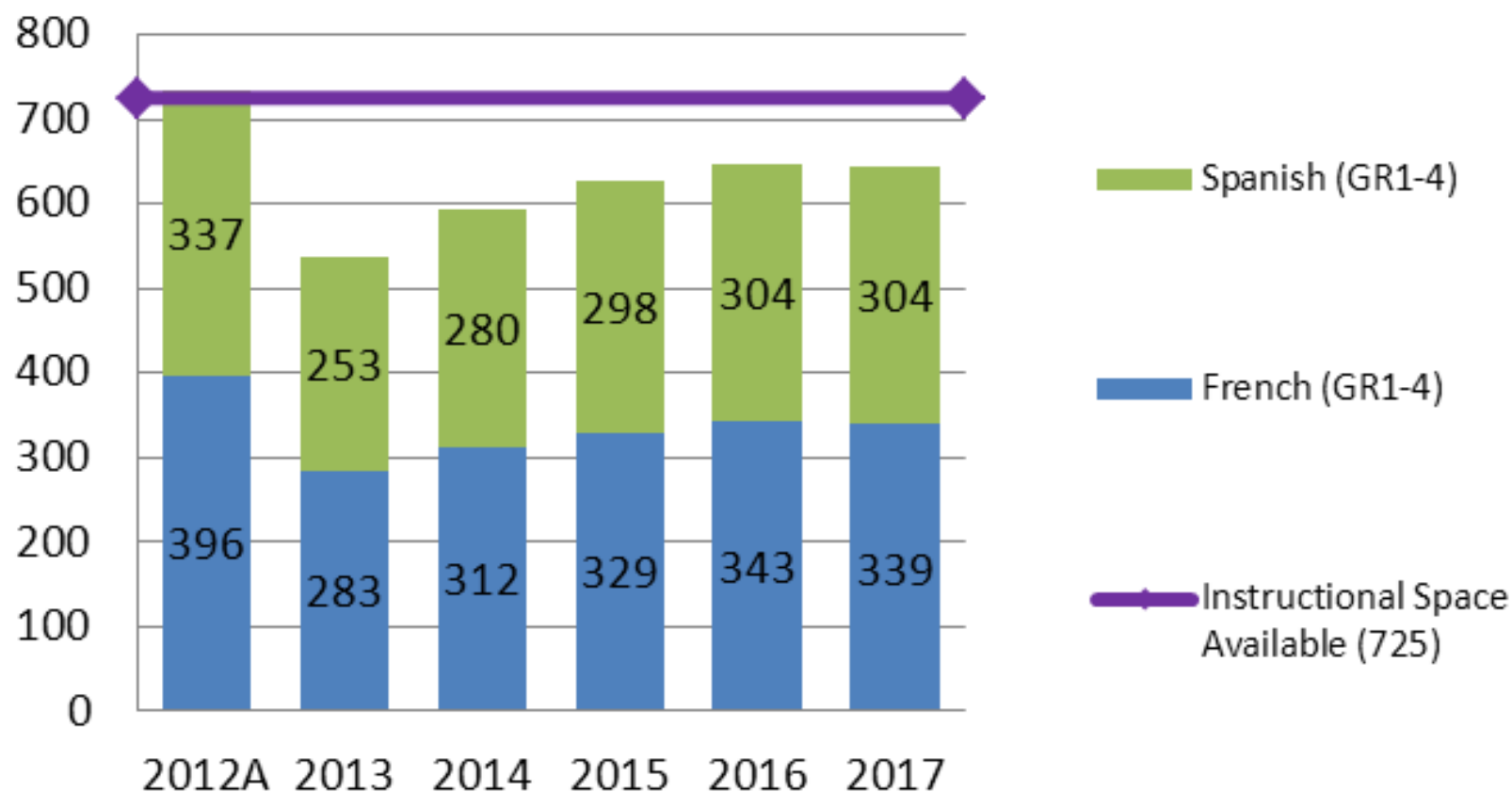
- ❑ Rosscarrock can accommodate the kindergarten from both programs for the long term with the regular program.
 - French and Spanish kindergarten would be on a traditional calendar
 - The regular program at Rosscarrock would continue to operate on a modified calendar
- ❑ Grade 5 students in both programs would be designated to Bishop Pinkham (French Immersion) and A.E. Cross (Spanish) for September 2013.
 - Current Grade 4 and 5 students at Westgate would move September 2013.
 - Current Spanish Bilingual students in Grade 6 and 7 at Bishop Pinkham would move to A.E. Cross for Sept 2013.

Scenario B: How does this reflect parent feedback?

- ☐ Abolish kindergarten at Westgate
- ☐ Keeps program together at younger grades

Westgate School - Proposed Scenario B

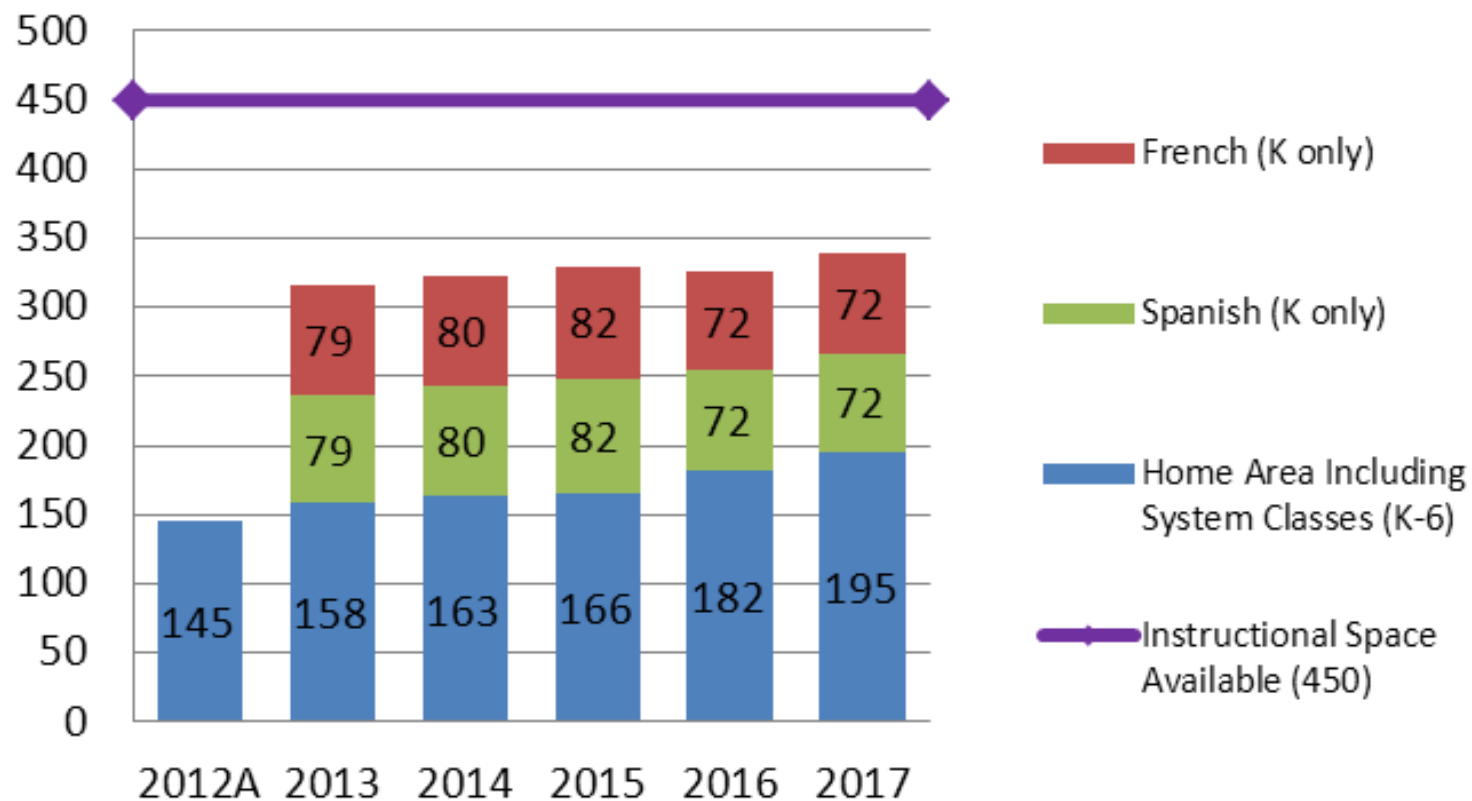
Kindergarten Students at Rosscarrock



Note: Kindergarten students in both French Immersion and Spanish Bilingual are located at Rosscarrock School

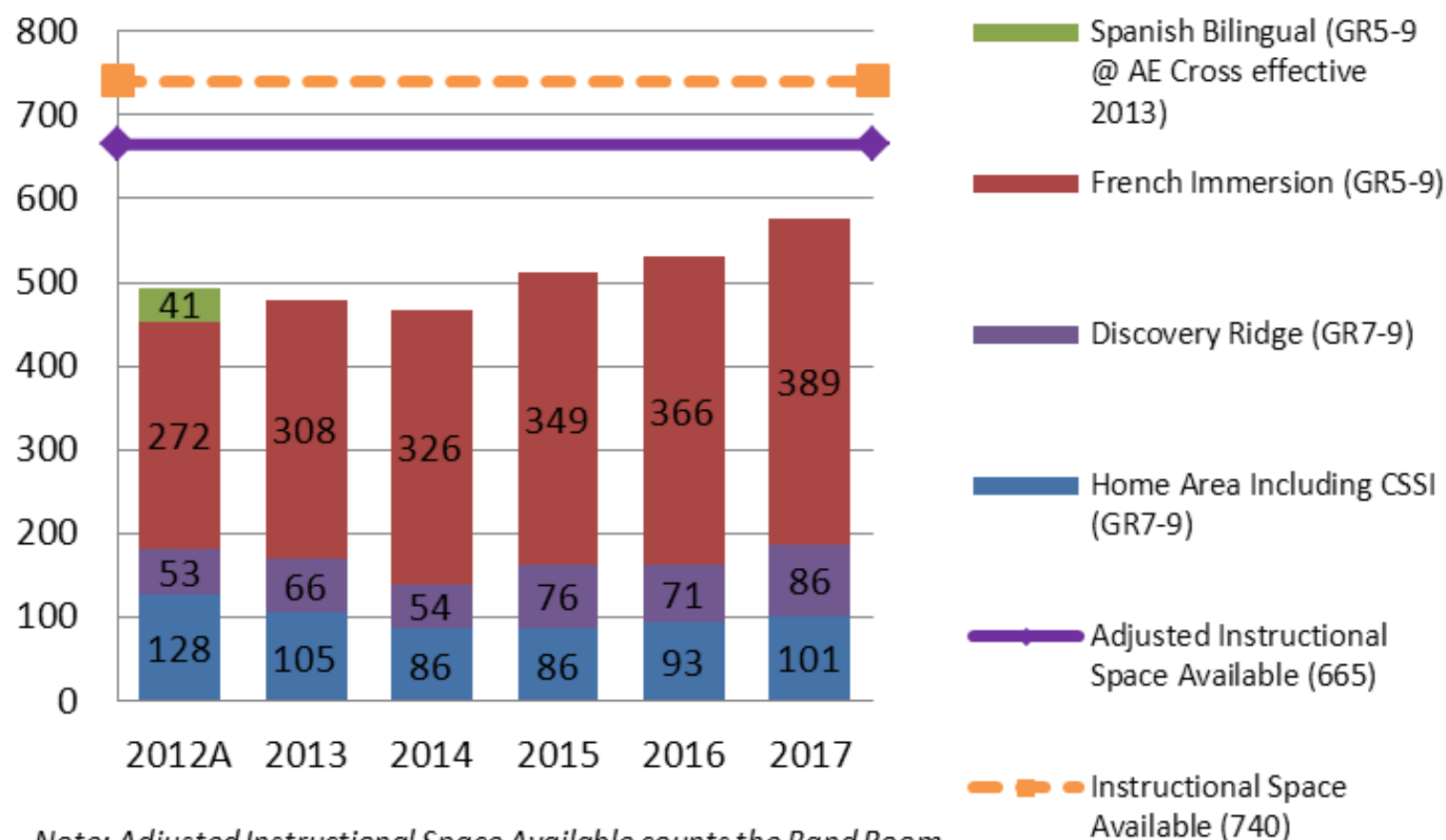
SUBJECT TO REVIEW AND UPDATE

Rosscarrock School - Proposed Scenario B 2012-2017



SUBJECT TO REVIEW AND UPDATE

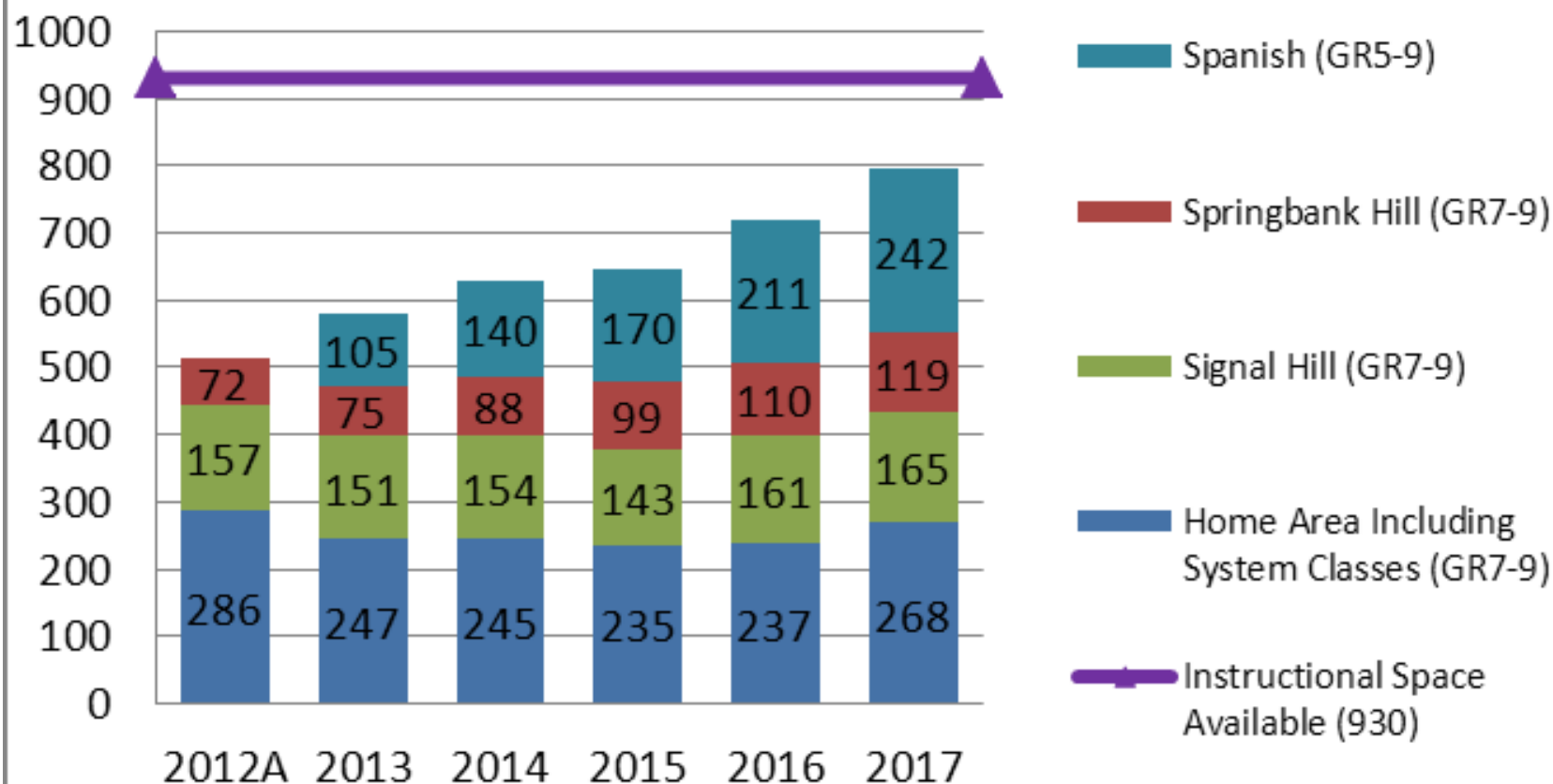
Bishop Pinkham School - Proposed Scenario A, B and C 2012-2017



Note: Adjusted Instructional Space Available counts the Band Room and the Lunch Room as one teaching space each

SUBJECT TO REVIEW AND UPDATE

A. E. Cross School - Proposed Scenario A, B and C 2012-2017



Note: Instructional Space Available includes the 6 classrooms currently used by the Area Office

SUBJECT TO REVIEW AND UPDATE

Scenario C

Open a second Spanish Bilingual site at Jennie Elliott for September 2013

- ☐ **K-4 both programs at Westgate**
- ☐ **K-4 new location for Spanish Bilingual at Jennie Elliott**
- ☐ **Gr 5-9 French Immersion at Bishop Pinkham**
- ☐ **Gr 5-9 Spanish Bilingual at A.E. Cross**

What would this scenario mean?

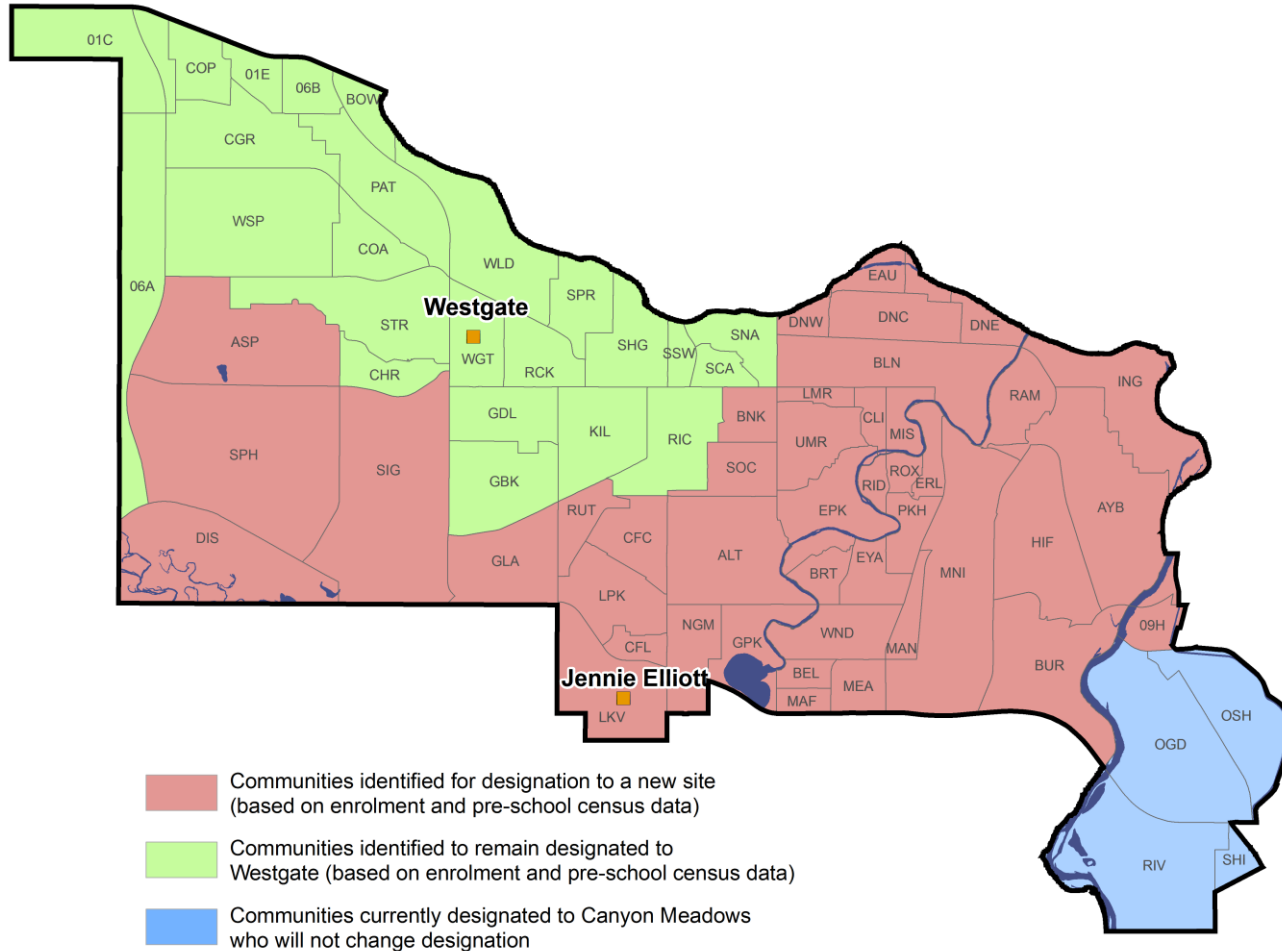
- ❑ Grade 5 students in both programs would be designated to Bishop Pinkham (French Immersion) and A.E. Cross (Spanish) for September 2013.
 - Current Grade 4 and 5 students at Westgate would move September 2013.
 - Current Spanish Bilingual students in Grade 6 and 7 at Bishop Pinkham would move to A.E. Cross for Sept 2013.
- ❑ New site would start kindergarten and Grade 1 for September 2013 school year
 - New boundary for Spanish Bilingual K-4
 - Some current kindergarten and students registering for kindergarten in 2013 must move to the new location.
- ❑ May require eventual relocation of the system classes from Jennie Elliott.

Scenario C:

How does this reflect parent feedback?

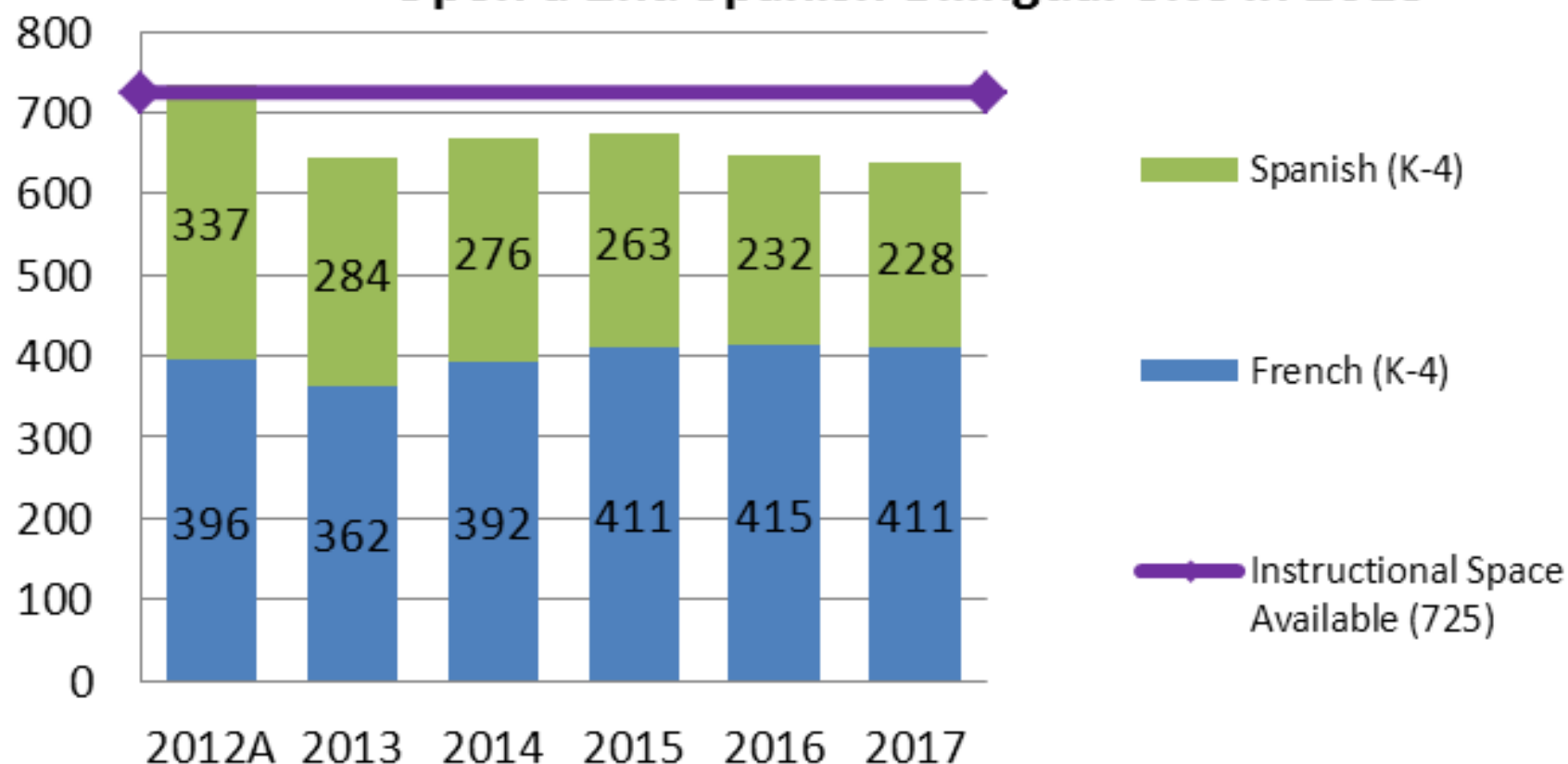
- ☐ Open a new location
- ☐ Allow room for growth

Proposed Boundary for 2nd Spanish Bilingual Program at Jennie Elliott School



Westgate School - Proposed Scenario C

Open a 2nd Spanish Bilingual Site in 2013

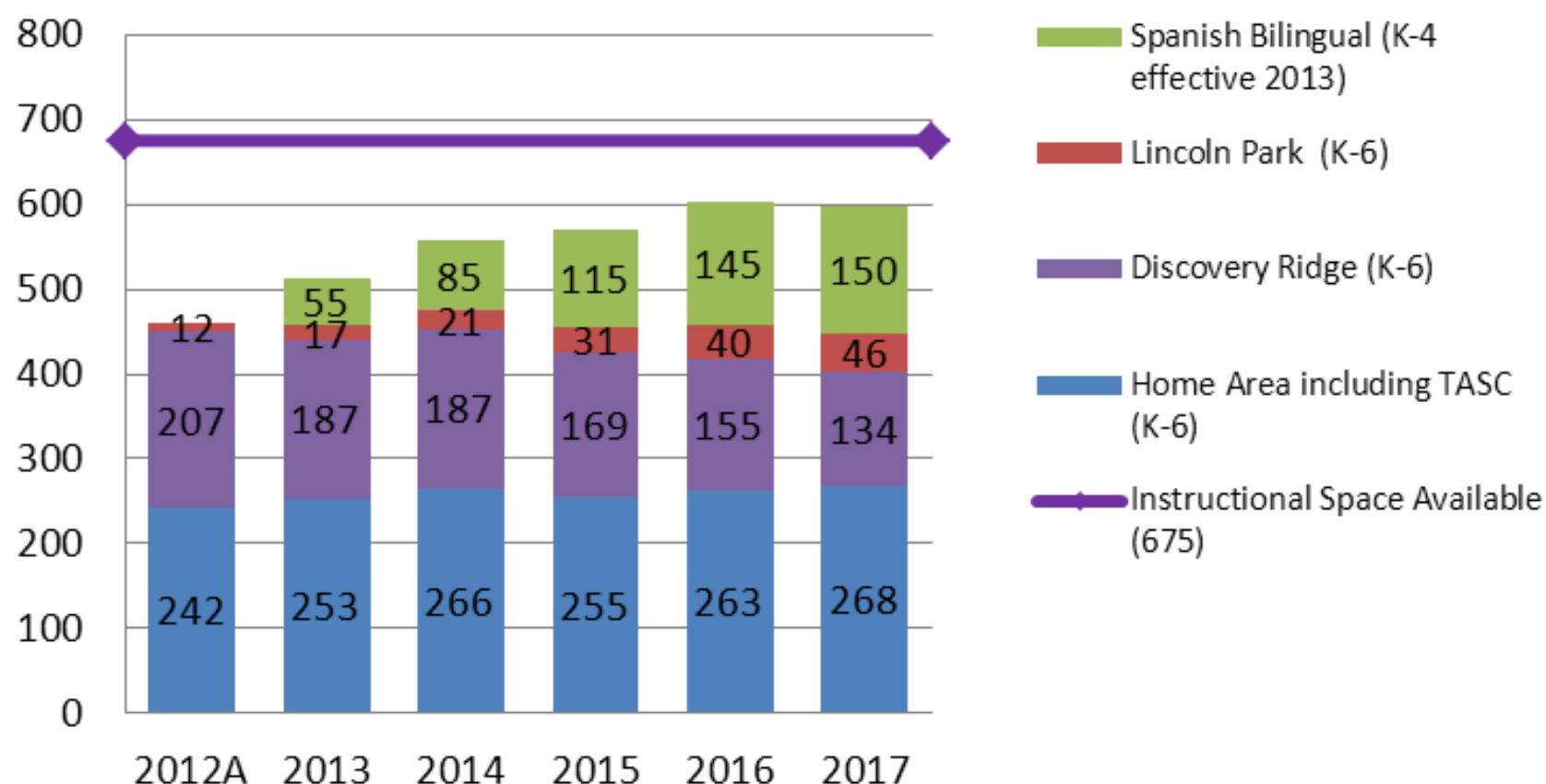


Note: Projections assume a 2nd Spanish Bilingual site opens for K-GR1 for September 2013

SUBJECT TO REVIEW AND UPDATE

Jennie Elliott School - Proposed Scenario C

Open a 2nd Spanish Bilingual Site in 2013

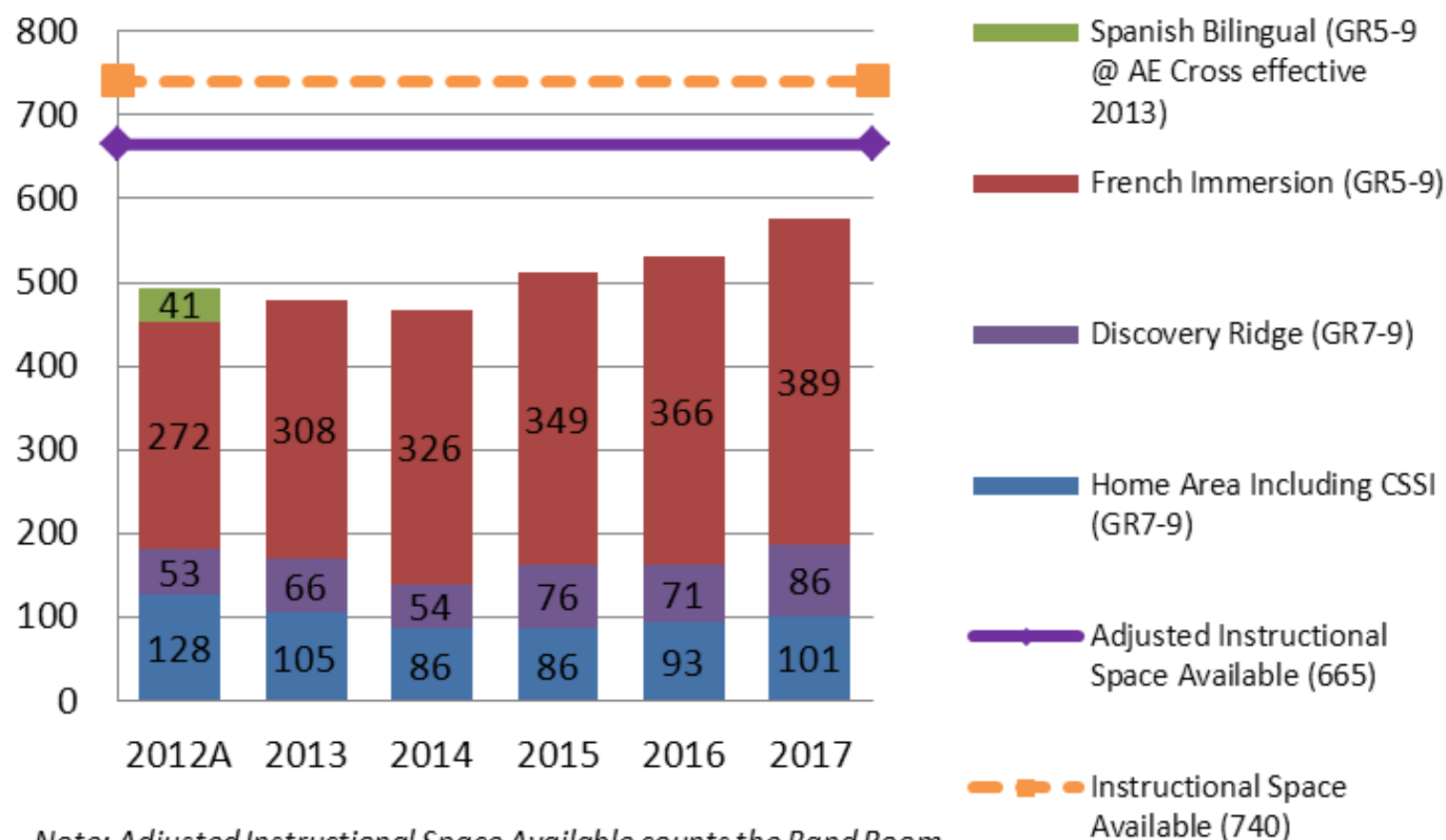


Notes:

1. Projections assume a 2nd Spanish Bilingual site opens for K-GR1 for September 2013

SUBJECT TO REVIEW AND UPDATE

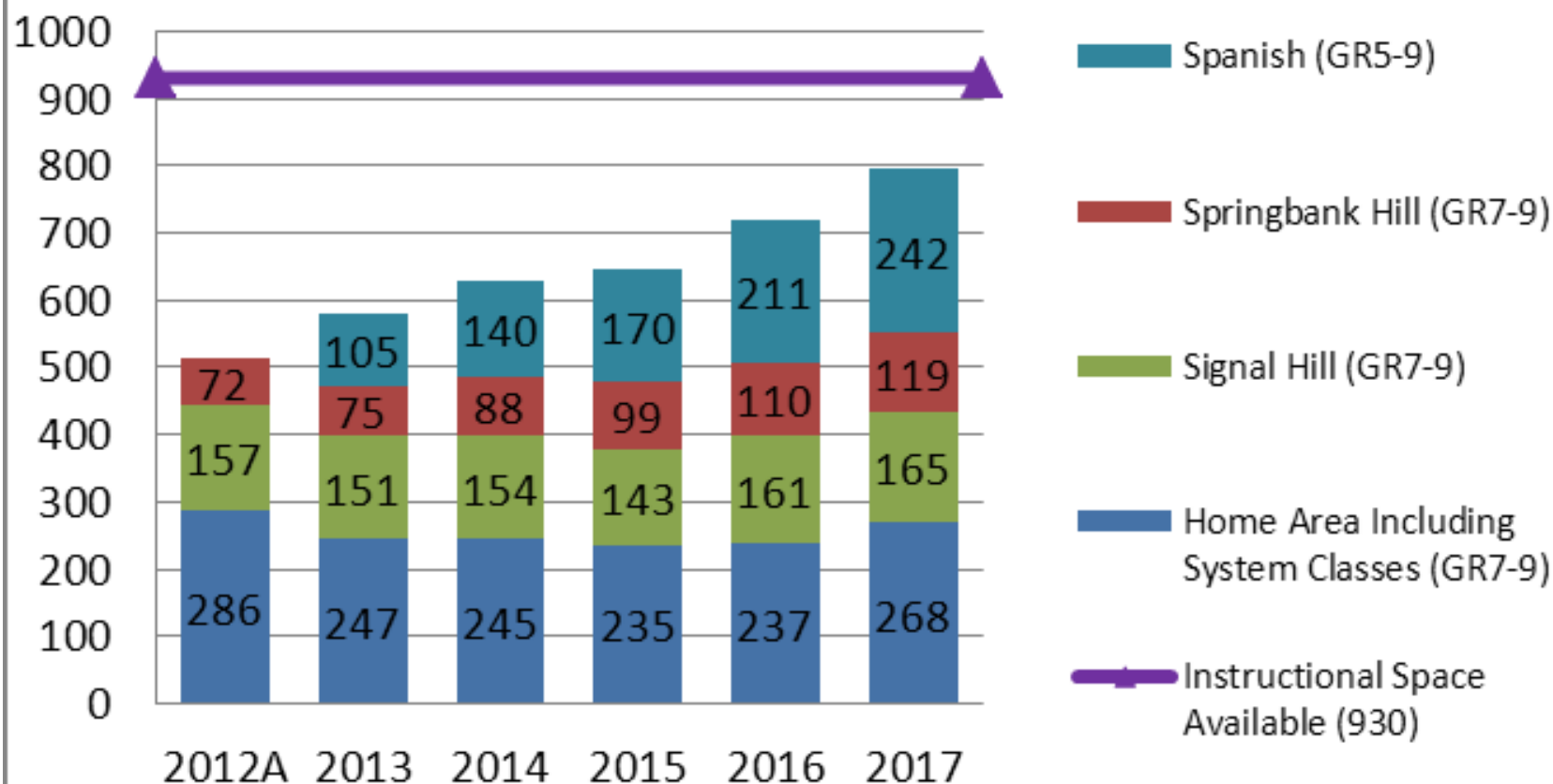
Bishop Pinkham School - Proposed Scenario A, B and C 2012-2017



Note: Adjusted Instructional Space Available counts the Band Room and the Lunch Room as one teaching space each

SUBJECT TO REVIEW AND UPDATE

A. E. Cross School - Proposed Scenario A, B and C 2012-2017



Note: Instructional Space Available includes the 6 classrooms currently used by the Area Office

SUBJECT TO REVIEW AND UPDATE



Scenarios no longer under consideration

learning | as unique | as every student



Calgary Board
of Education

Scenario no longer considered

Keep both programs together

- ☐ **K-3 both programs at Westgate**
- ☐ **Gr 4-6 both programs at Rosscarrock**
- ☐ **Gr 7-9 both programs at Bishop Pinkham**

Why not?

- ☐ Would require that the regular program students at Rosscarrock move to a different location.
- ☐ Other scenarios addressed the accommodation issue with no disruption for the students in suggested locations.
- ☐ Administration did not support relocating a group of students that currently walks to their community school.

Scenario No Longer Considered: How does this reflect parent feedback?

- ☐ Keeps the two programs together
- ☐ Builds on our original scenario 1
- ☐ Move regular programs to make room

Scenario no longer considered

Completely split the programs

- ☐ **K- 6 Spanish Bilingual at Rosscarrock**
- ☐ **K-6 French Immersion at Westgate**
- ☐ **Gr 7-9 Spanish Bilingual at A.E. Cross**
- ☐ **Gr 7-9 French Immersion at Bishop Pinkham**

Why not?

- ☐ K-6 will not fit at Rosscarrock School even if the regular program were relocated.

Scenario No Longer Considered: How does this reflect parent feedback?

- ☐ Move regular programs to make room
- ☐ Use available charter school
- ☐ Split the programs
- ☐ K-6, 7-9 learning continuum



Process for decision making

learning | as unique | as every student



Calgary Board
of Education

Process for decision making

All feedback reviewed

Selection of final scenario based on guiding principles and their alignment with your feedback

Administrative Decision - March 2013

Decision to be communicated via a letter to parents



Calgary Board of Education