

What happens next?

The Admissions' staff registers your child into our computer program and sends documents to your child's new school.

Please telephone the school and make an appointment to register your child.

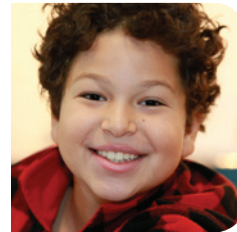
or

Ask your interpreter to telephone the school and make an appointment to register your child.

At the School

Take the registration form with the green sticker with you to the school.

Take any report cards/transcripts to the school too.



[learn more](#) |

English Language Learners
Learning Services
Calgary Board of Education
Kingsland Centre

t | 403-777-7373

f | 403-777-8022

Part of being unique is that each student learns differently. Students can realize their full potential by learning in ways that recognize their individuality. This is why the CBE is dedicated to personalized learning. Each of our more than 107,000 students is supported by our system. The CBE has the capacity to lead in education while honouring each student's gifts. The result is a rich and dynamic learning experience that enables lifelong learning.

Admission to the Calgary Board of Education



learning | [as unique](#) | as every student

REPORT CARD				
GRADING PERIOD	1	2	3	4
READING:	A			
WRITTEN COMMUNICATION	A			
MATHEMATICS	C			
SCIENCE/HEALTH	B			
SOCIAL STUDIES	B			
ART	A			
MUSIC	A			
PHYSICAL EDUCATION	C			
Grade Average	B			
Attendance:	Present	10		
	Absent	0		
	Late	0		
A = Excellent B = Good C = Satisfactory S = Needs Improvement U = Unsatisfactory I = Inadequate / Incomplete				
Student:	Grade:	Year:		

What happens today?

You will be welcomed by a CBFY (Calgary Bridge Foundation for Youth) In-School Settlement worker who will later help you with settlement issues.

You fill out forms with the help of the admissions clerks.

We check and copy immigration documents.

We find out which school your child will go to based on your address.

We place your child into grades according to his/her age.

We assess your child. The assessment may take a long time.

The assessment teacher talks to you about the speaking, reading and writing results for your child and explains how this is linked to the English language learner code and benchmarks.

The assessment teacher gives you the phone number, map, and website of the school and a registration form with a green sticker to take to the school.

We send the assessment results to the school.

The English Language Assessment

Your child/ren will do the following assessments with the teacher.

Oral Assessment



- Used to find out how well your child understands English when someone talks to him/her
- Used to find out how well your child speaks English

Reading Assessment



- Used to find out how well your child reads out loud
- Used to find out how much your child understands when he/she reads silently

Writing Assessment



- Used to find out how much English your child can write
- Used to find out how much your child understands about the style of Canadian writing

While you are waiting

Talk to a CBFY In-School Settlement worker about how we can help you as you settle in Calgary.

Use the laptop in the gym to access the CBE website and City of Calgary Transit website.

Talk to someone to find out more about CBE schools.

Watch some videos about school in Canada.

Ask to see one or all of these videos in your language.

Welcome to the Calgary Board of Education



New Moves



Parent Teacher Interviews



For Our Kids

